

CLEVELAND MKGL-T SERIES

GAS FLOOR MOUNTED TILTING KETTLES

Gas, self contained, tilting kettle with worm drive tilt mechanism and 150lt, 225lt, 300lt capacity, 2/3 jacketed. Solid state controls for accurate temperature control ($\pm 1^{\circ}\text{C}$) and low water safety. All exterior surfaces are stainless steel.

Model: **MKGL-40T** (150lt capacity)
MKGL-60T (225lt capacity)
MKGL-80T (300lt capacity)



STANDARD FEATURES

- High Efficiency (65%) Forced Air Double Pass Heating System. 147.7MJ on 40 gallons, 200.5MJ on 60 and 80 gallons
- Enclosed, Balanced 10 gauge Stainless Steel hydraulically operated mixer-bridge
- Infinitely Variable Ratio Control between Scraper and Agitator. Agitator rotates from 0 to 8 times the speed of the Scraper. Infinitely Variable Scraper Speed Controls from 0 to 45 RPM
- Solid-State, precise temperature controls with less than 1°C temperature differences. LED indicator for Heat Cycle and Low Water Indicator, Power On/Off Switch
- Automatic Ignition System and 50 psi Steam Jacket Rating
- Type 304 Stainless Steel with #4 finish on kettle and supports
- Steam Jacket permanently filled with treated distilled water
- 3-horsepower hydraulic powered Agitator, Scraper and Bridge Lift. Nylon Scraper Blades removable without tools
- Tilt Mechanism of roller bearings and case hardened self-locking machined worm and segment gear
- Level adjustable flanged feet, Gallon markings on Scraper Shaft
- Insulated Heat Exchanger
- 3" diameter Quick Opening Butterfly Valve
- Recessed, front-mounted Pressure/Vacuum Gauge

OPTIONAL FEATURES

- 3" Air Operated Flush Piston Valve. (FPVA3) (for use with a food pump, replaces 3" butterfly valve - requires air compressor)
- Tri-Basket Strainer Support Systems. (TBS)
- 316 Stainless Steel Interior Liner. (316G)
- Water Meters (GMC1 or LMC1)
- Product Time / Temperature Controls & Indicator. (DTCI)
- Kettle Accessory Kit (KAK) includes:
 - Clean-up Brush (CB) - 36" Kettle Paddle (KP)
 - 36" Kettle Whip (KW) - 36" Kettle Brush (KB)
 - Draw-off Brush (DB) - 24 oz. Ladle (KL)
- Hot & Cold Water Faucet. (DPK)
- Two-Piece Lift-Off Covers. (MTP)
- Pan Carriers (PCK), Food Strainers. (FS)

SPECIFICATIONS ARE SUBJECT TO CHANGE WITHOUT NOTICE.

From the world of Comcater!

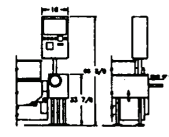
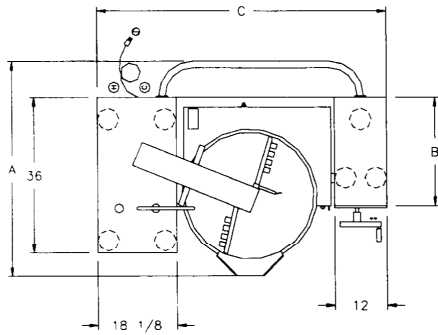
National Head Office
 156 Swann Drive
 Derrimut VIC 3030
 Tel: +61 3 8369 4600
 Fax: +61 3 8369 4695

Melbourne
 96-100 Tope Street,
 South Melbourne VIC 3205
 Tel: +61 3 8369 4600
 Fax: +61 2 8699 1299

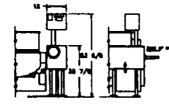
Sydney
 20/4 Avenue of the Americas
 Newington, NSW 2127
 Tel: +61 2 9748 3000
 Fax: +61 2 9 648 4762

Brisbane
 1/62 Borthwick Avenue
 Murarrie QLD 4172
 Tel: +61 7 3399 3122
 Fax: +61 7 3399 5311

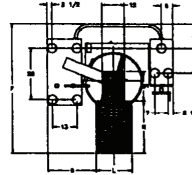
CLEVELAND MKGL-T SERIES



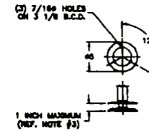
CONTROL HOUSING FOR
WITH OR WITHOUT
GMC1/LMC1



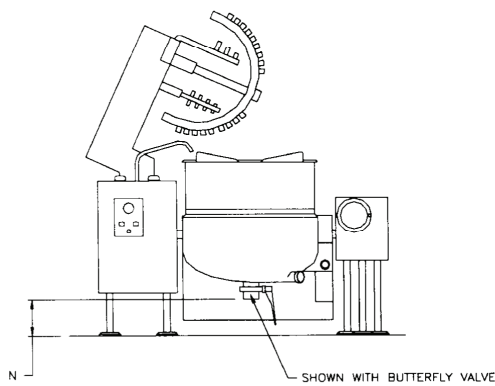
CONTROL HOUSING FOR
AND/OR
GMC1/LMC1



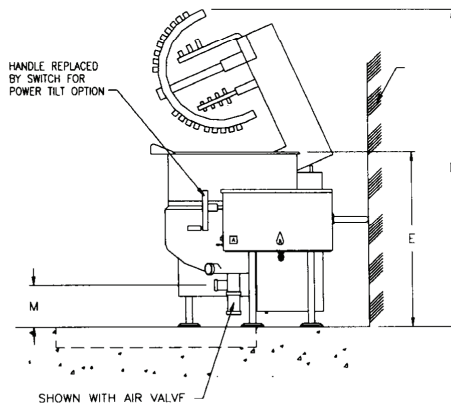
FLOOR DRAIN AND LEG MOUNTING LOCATION



FOOT DETAIL



SHOWN WITH BUTTERFLY VALVE



SHOWN WITH AIR VALVE

DIMENSIONS (mm)

Lt.	A	B	C	D	E	F	G	H	J	K	L	M	N	O
150	1133	635	1618	1759	1029	1651	340	343	323	742	635	282	349	520
225	1273	647	1692	1879	1111	1816	358	355	355	787	723	276	342	520
300	1358	660	1786	1955	1111	1905	997	368	308	812	787	250	317	539

TECHNICAL DATA

Power Supply	415V, 3 Phase
Energy Rating	147.7MJ (MKGL-40T) 200.5MJ (MKGL-60T & MKGL-80T)

SPECIFICATIONS ARE SUBJECT TO CHANGE WITHOUT NOTICE.



www.comcater.com.au

PROUDLY DISTRIBUTED BY: