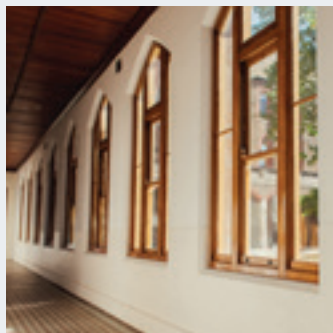


Abbotsford Convent Foundation

Annual Review 18/19



Abbotsford
Convent



Contents

Message from the Chair and CEO	4
Vision and Purpose	5
Key Highlights	6
Programs	8
Key Programs	10
New Partnerships and Events	12
Galleries	14
People	16
Community	18
Place	20
A Place to Meet	22
Protecting Our Precious Place	24
Finances	26
Supporters	30
Board and Team	32
Volunteers	33
Thank You	34

Cover: *Cowboy* by Michael Smith. Photo by Anne Moffat.

Opposite images from left to right, top to bottom: Djirri Djirri dancers, *Fall! Falter!! Dance!!!* by Ryuichi Fujimura, *Sensory Art Lab* by Slow Art Collective, *Pop-up Tearoom* by Yumi Umiumare, *A Room of My Own* by Minna Gilligan, *Tenfold* by Ink & Spindle, *The Devil's Honey* by Adam Stone, *The River's Children* by S.J. Norman as part of *Temporal Proximities*, Melbourne Art Therapy, Christian Li with Laurence Matheson. Photos by Anne Moffat. Garden volunteers photo by Abbotsford Convent Foundation.

A Message from the Chair



Victoria Marles

It has been another remarkable year for the Abbotsford Convent Foundation, as we continue to safeguard, activate and expand the Convent precinct for all to enjoy.

A year since restoration, Sacred Heart is home to a wonderful number of creatives and host to a range of programs throughout the year. We were thrilled that the Sacred Heart project was recognised for excellence in adaptive reuse, with Kerstin Thompson Architects awarded the John George Knight Award for Heritage at the 2019 AIA Victorian Architecture Awards.

Led by Williams Boag Architects and FDC Construction & Fitout, and overseen by Heritage Victoria, nine months of works culminated in the opening of the Convent's largest and most evocative venue – the North Magdalen Laundry. A stunning achievement that now provides critical interpretive and community engagement opportunities.

We were delighted to receive support from the Department of Environment & Energy which enabled us to work on the very important task of creating a new Conservation Management Plan, to guide the protection and interpretation of our heritage assets. The Plan provides a framework for restoration and sustainability initiatives, such as works on the Mercator grounds and the main Convent Building's century-old windows – made possible by the generous support of the community.

We were also pleased to work with a range of supporters with shared ambitions to extend the Convent's amenity, programs and services. I refer you to our Supporters' page and sincerely thank each of you for your generosity and ongoing support.

I'm very proud of our achievements this year and am confident that our work with our diverse range of supporters will continue to generate positive impact for our growing community.

A Message from the CEO



Collette Brennan

As I reflect on the past year, I feel honoured by the range of people from our community who help us refine our offer and position us as one of Melbourne's most-loved arts precincts.

From the Convent Made pop-up shop to the simple art of brewing great coffee, our tenant community, venue hirers and arts partners helped us welcome close to a million visitors this year.

November 2018 saw the return of Open Spaces expanded to a two day event. The festival showcased our onsite community as well as artists and musicians from our year-round arts and cultural program. I was particularly proud of working with Wurundjeri Council to open the festival with *Ngulu-nganjin* – which saw our community come together to dance, sing and celebrate Wurundjeri Woi wurrung culture. It was such a memorable day, with storytelling, traditional games and language sharing in our stunning heritage gardens. I'm thrilled that visitors can now experience the *Nugulu-nganjin* sound trail developed in partnership with the Wurundjeri Woi wurrung Corporation on their mobile devices all year round.

Our diverse program continues to highlight new perspectives and narratives inspired by the rich history of the precinct – particularly in the Magdalen Laundry, a space imbued with a century of women's experiences. Our inaugural exhibition program, *Temporal Proximities*, curated by Kelli Alred, showcased a combination of new, site-specific commissions and existing works by nine female and non-binary artists. This was followed by an exciting new partnership with Dance Massive which brought leading choreographers Jill Orr and Hellen Skye to the Convent.

I'd like to thank our tenants, donors, partners, Board of Directors, and my team for their steadfast support, generosity, enthusiasm, curiosity and determination this year. You can be proud of the part you play in making the Convent community the stunning success that it is today.

Vision

To be renowned for stimulating engagement and cultural exchange through the wonderful and unexpected curiosities of our people and our place.

Purpose

To transform people's lives through diverse cultural experiences and the striking landscape of our place.

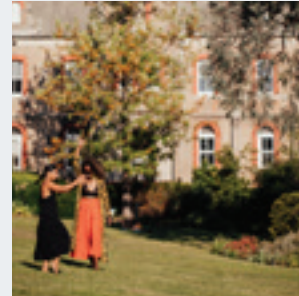
Key Highlights



300
Performances in our venues
↑ 203%



30,000+
People attended markets at the Convent

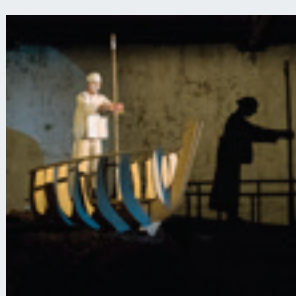


251
Artists exhibited work at c3
↑ 47%

15,000
People follow us on Instagram
↑ 15%



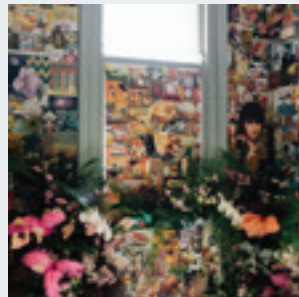
28,172
People attended St Heliers Street Gallery exhibitions



818
People joined a Social History Tour



7,086
People attended Convent Kids events
↑ 15%



100%
Board members donated in support of the Convent



4,537
People attended the Convent Made Pop-up Shop

2,180
Hours donated by volunteers
↑ 17%



28,193
People attended c3 exhibitions
↑ 33%



273
Film shoots took place at the Convent



Images from left to right, top to bottom: *Pop-up Tearoom* by Yumi Umiumare, *Sensory Art Lab* by Slow Art Collective, *Cowboy* by Michael Smith, Rose Riebl and Chris Howlett, *A Room of My Own* by Minna Gilligan, *The Devil's Honey* by Adam Stone at c3 Contemporary Art Space. All images by Anne Moffat.

Images from left to right, top to bottom: *Open Spaces 2018*, *Dark Night* by Jill Orr, photo by Gregory Lorenzutti, *Project F* by Prue Lang, *The River's Children* by S.J. Norman as part of *Temporal Proximities*, *Fall! Falter!! Dance!!!* by Ryuichi Fujimura, *Fringe Furniture 32*. All photos by Anne Moffat except where stated.

Abbotsford Convent Studio Residency Program

The Abbotsford Convent Studio Residency Program, which launched in 2017, focuses on supporting artists to develop works that are site-specific or site-responsive.

As part of the program in 2018, innovative visual artist Minna Gilligan developed an ambitious collage installation, *A Room of My Own*, plastering the walls of her studio with an elaborate, psychedelic wallpaper of imagery from her personal collection of 1960s-1970s literature. The collage utilised stereotypically feminine imagery of interiors, clothing, flowers and garden landscapes, with a real life floral element added specifically for the Open Spaces festival weekend.

“The Abbotsford Convent six-month artist residency was an immensely valuable period of time for my art practice. My favourite quality of the program is that you are allowed to create independently, with the outcome of the residency largely up to you, the artist. I felt free creatively during my time at the Convent, as well as supported logistically – due to the helpful staff and the monetary element included in the residency. I was stoked with the outcome I produced, and happy that I aligned the unveiling of my project with the Open Spaces weekend. Hundreds of people streamed through my studio over the two days, and it was the perfect way to say goodbye to my time at the Convent. I genuinely miss my space there, and encourage everyone to apply for future opportunities with this specific program.”
– Minna Gilligan, 2018 artist-in-residence

Artist-in-residence Leisa Shelton led a conversations series over six weeks in early 2019, bringing together artists, thinkers and curious others over a shared lunch. Each week the conversation was focused around the current work, lineage of practice and gnawing interests of an invited guest, opening out into shared conversations around the table.

“As an artist-in-residence with the Abbotsford Convent Foundation, I have been offered the key elements of all artistic practice which have enabled and strengthened both my practice and my resilience as an artist:
SPACE within which to house and hold my work.
SUPPORT to continue to build the courage to continue to make work in these demanding times.
CONFIDENCE in my current projects and my place as an artist here in Australia.”
– Leisa Shelton, 2019 artist-in-residence



Programs

Key Programs

Abbotsford Convent continues to establish itself as one of Melbourne's most-loved arts and community precincts. This year's curated program offered something for everyone, delivered through our distinctive programming streams – our Convent Live performing arts series, Convent Kids children and young people's program, and Convent Made program celebrating the creatives in our tenant community.

The pinnacle of our year-round program, Open Spaces festival, returned in 2018 with an expanded two-day format showcasing the very best of our thriving creative community. Boasting a diverse array of programs spanning visual art installations, two live music stages, kids programs, curated markets, community activations and more, Open Spaces is the Convent's biggest event of the year. Over two huge days, the festival featured 150+ artists, 17+ exhibitions, 4 markets, 9+ performances, 18+ live music acts as part of Open Sounds, and 10+ programs as part of the *Ngulu-nganjin* (Our Voice) program. The Convent's spaces were buzzing with over 10,000 visitors over the weekend. One of the major highlights of the 2018 program was the Gulamboon live music stage curated by Joel Ma, featuring diverse voices spanning the globe, including The Senegambian Jazz Band, Cool Out Sun, Gordon Koang, Indolombia and more.

Convent Live

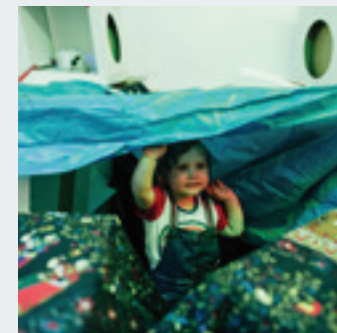
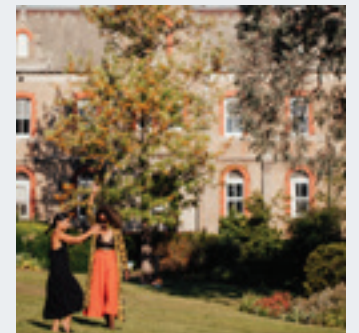
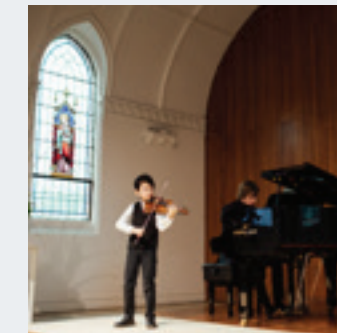
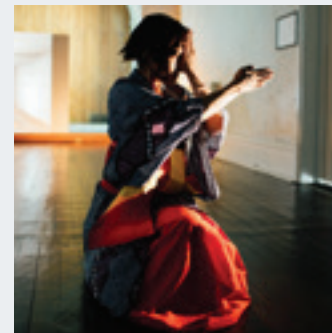
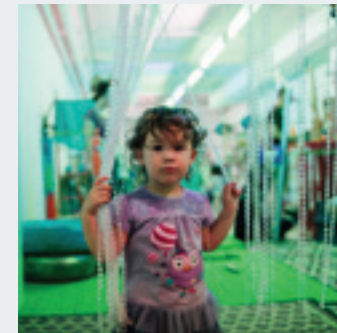
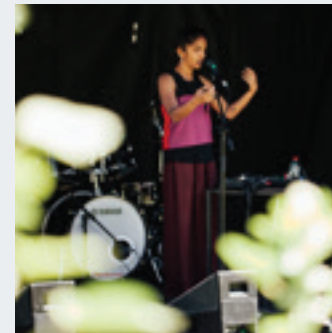
The Convent's heritage spaces were brought to life with music year-round through our Convent Live program, drawing 513 attendees to five performances in our unique spaces. Highlights included Arcadia Winds, Penny Quartet, Gintaute Gataveckaitė, and the premiere performance of *The Abbotsford Mysteries* song cycle by PLEXUS. The Convent's signature annual classical music event, Music in the Round, sold out. A major highlight of the 2018 Music in the Round program included the youngest ever winner of the Yehudi Menuhin International Violin competition in Geneva (2018), 10-year-old Christian Li.

Convent Kids

Our ever-popular Convent Kids program continued to thrive this year, with a selection of 10 diverse events spanning classical music, book making, Japanese performance art, gardening and more, delivered to 7,257 attendees with support from City of Yarra. Thanks to support from The Danks Trust in 2019, we made advancements in the educational value of our Convent Kids programs through the introduction of take-home learning resources developed in consultation with an education advisor.

Our blockbuster Convent Kids program, *Sensory Art Lab*, returned in January 2019 bigger than ever, transforming c3 Contemporary Art Space in an explosion of imagination, welcoming 5,272 visitors over two weeks. Other highlights included a partnership with Polyglot Theatre to present *Light Pickers*, welcoming our littlest Convent Kids to immerse themselves in a gentle, glowing world; *Instro-Experimento* by Playable Streets invited families to make instruments out of household materials, using microcomputers and interactive touch technologies; and a cross-over program with the Convent's ButohOUT! Festival called *Peek-a-Butoh*, giving young ones the opportunity to experience the Japanese performance art of Butoh with artists Yumi Umiumare and Takashi Takiguchi.

Images from left to right, top to bottom: *I Spy* by Kids' Own Publishing, *Ngulu-nganjin*, Chelsea Wilson, Aarti Jadu, *Sensory Art Lab* by Slow Art Collective, Gintaute Gataveckaitė, *Pop-up Tearoom* by Yumi Umiumare, Christian Li with Laurence Matheson, Open Spaces, Cool Out Sun, *Sensory Art Lab* by Slow Art Collective, *Wild Warrigal Greens!* by Sonio Electric. All photos by Anne Moffat with the exception of *I Spy* and Gintaute Gataveckaitė images by Abbotsford Convent Foundation.



Partnerships and Events

The Convent continues to foster the development of independent artists and delight audiences through new and continuing programming partnerships. This year, we showcased diverse arts practices in our versatile performance spaces and introduced audiences to our largest and most evocative venue – the Magdalen Laundry.

Inaugural Magdalen Laundry exhibition

Curated by Kelli Alred, *Temporal Proximities* showcased a combination of new, site-specific commissions and existing works by Helen Grogan, Katie Lee, Bridie Lunney, Gabriella Mangano and Silvana Mangano, Angelica Mesiti, S.J. Norman, Jill Orr and Clare Rae. Unfolding dynamically across three evenings in March 2019, the exhibition presented durational and intermittent performances spanning the North and South Magdalen Laundry.

Dance Massive

In 2019, the Convent became an associate partner of Dance Massive, and presented two major dance works in partnership with Dancehouse. *Dark Night* by Jill Orr explored the crumbling humanitarian ideals of a world in crisis. Presented with Sir Zelman Cowen School of Music at Monash University, *Quake* by Hellen Skye and Collaborators featured an arresting synthesis of hypnotic sound and uncanny movement. Dance Massive provided a rare opportunity for 491 people to experience the southern end of the Laundry, and for artists to creatively respond to these textured surrounds.

As part of Dance Massive, the Convent hosted a series of site-responsive showings in partnership with Ausdance. International delegates, arts industry and artists attended showings across four venues at the Convent, including: *Goat Talk* by Leah Landau; *Fall! Falter!! Dance!!!* by Ryuichi Fujimura; *PROJECT F* by Prue Lang; *Cowboy* by Michael Smith; and *PopUP Tearoom* by Yumi Umiumare. The day closed with a delegate dinner hosted by the Convent at Cam's Café. In all, 741 people engaged with our Dance Massive events.

ButohOUT!

Co-produced by Japanese-Australian artists Yumi Umiumare and Takashi Takiguchi, ButohOUT! Festival 2019 explored the theme of forbidden laughter through a series of workshops, children's programs and a multidisciplinary performance of surreal comedy. The ButohOUT! performance season achieved 97.8% house capacity, with 626 people attending the show.

Melbourne Fringe

Our long-standing partnership with Melbourne Fringe continued with a renewed focus on accessibility – for participating artists and audiences alike. This year the Fringe Furniture showcase featured 153 works by 141 designers, as well as a commissioned installation artwork by Megan Streader. The showcase was enjoyed by 3,227 design enthusiasts, including 84 people attending artist talks, and 24 attending a tactile tour of the exhibition. We also welcomed performances by our resident theatre companies – *Hear Me Roar* by Polyglot Theatre and *Unsolicited Male* by Q44 – and by new friends from further afield, including *Meat* by New Zealand-based Dance Plant Collective, *Stranger of the Mind* by David Bronwell and *Dysmorph* by Fiona Martin.

Midsumma Festival

For Midsumma Festival, St Heliers Street Gallery joined BUS Projects and the Centre for Contemporary Photography to host *Queer Economies*, showcasing handmade gifts of gratitude made by and for LGBTQIA+ community members, attracting 1,293 attendees. The Convent also hosted two sellout programs including the world premiere season of new ballet-opera *Orpheus* by Forest Collective, and life drawing with Convent artist Eureka.

We look forward to working with Next Wave and Liquid Architecture again in the coming year.

Pictured: *Fall! Falter!! Dance!!!* by Ryuichi Fujimura at Dance Massive Open Studios. Photo by Anne Moffat.



Galleries

c3 Contemporary Art Space

A 5 billion year clock to herald the end of time... a mosaic that crumbles to pieces beneath visitors' feet... three molar teeth belonging to an artist... a Muslim death metal version of the aria Armida, a snoring artwork and lakes of lemonade on Mars!

This year the Convent's c3 Contemporary Art Space continued to deliver risk-taking works exploring ideas from untold intimate personal histories to the power of social action, in a scale from the vastness of universal time to intimate performances focused on an artist's breath.

The gallery saw a 46.7% increase in artist participation this year, with 251 artists exhibiting work in independent and group shows. Of these, 84 artists contributed work to the annual fundraiser, *TRAIN/ENNIAL*, which explored arts practice in the age of the spectacle. A series of limited edition mugs were commissioned to circle the foyer on a sushi train, with designs by Agatha Goethe Snape, Natty Solo, Steven Rhall and c3 projects.

When compared with the previous year, visitation across all 2018/2019 exhibitions increased by 32%. November was a particularly busy month for the gallery, with c3 welcoming 3,053 visitors across the Open Spaces festival weekend. In addition to pop up artist talks in the gallery, publications by eight independent artists were presented as part of the Print Space market and Amy Hurley's exhibition *A Contemplation of Wonder* featured as part of c3's annual Monash New Graduate Award.

Thanks to a generous donation by Convent supporters Jeff Thompson and Kathryn Culley, alongside additional ACF investment, c3 received some much-needed renovations this year. The gallery's layout and internal finishes were refreshed; electrical, CCTV and data systems upgraded; and a new archway entrance installed which mirrors the original architectural features of the building. These works ensure that the gallery is ready for a new decade of boundary-breaking art.

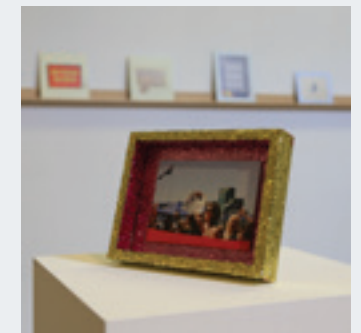
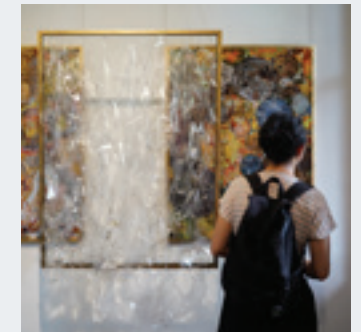
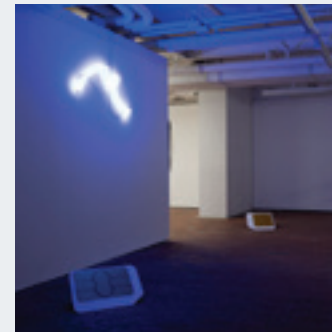
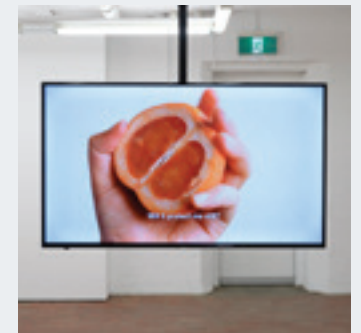
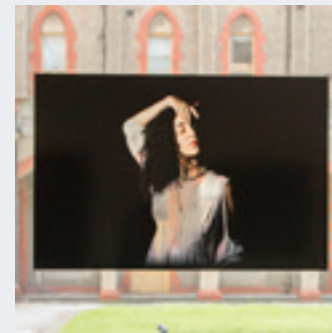
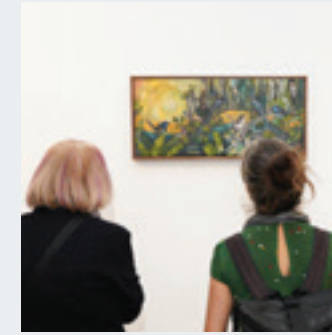
c3 was also supported by local wine merchant Blackhearts & Sparrows, who provided a range of wines for exhibition openings and special events.

St Heliers Street Gallery

The Convent's St Heliers Street Gallery delivered a year-round program of 18 curated exhibitions to an audience of 26,000. Works by Convent-based artists included ceramics studio Ghost Wares' first exhibition, photographers Penelope Hunt and Helga Salwe's adjoining shows, textile studio Ink & Spindle's tenth anniversary exhibition, and the first Convent Made Pop-Up Shop.

Among the key highlights of the gallery program were the Chinese Australian Contemporary Artists (CACA)'s *Art Once in a While*, handmade objects of gratitude showcased as part of Midsumma Festival, an evocative exhibition as part of the ART+CLIMATE=CHANGE Festival, and the *Wilam* book launch, a partnership between the Yarra Riverkeepers and the Wurundjeri Woi wurrung Cultural Heritage Aboriginal Corporation.

Images from left to right, top to bottom: *New Formation* by Jess Merlo, *Wilam* by Lisa Kennedy, *Queer Economies* as part of Midsumma Festival, *The Light Within* by Nadin, *Alien Nature* by Alicia King, *Of Sampaguita*, *Ilang Ilang* group show, *Future State* by Amalia Lindo and Samantha Barrow, *Waiting Until the Last Minute* by Simon MacEwan, *Art Once in a While* by Chinese Australian Contemporary Artists, *The Devil's Honey* by Adam Stone, *Tenfold* by Ink & Spindle, *Queer Economies* as part of Midsumma Festival.



Celebrating the Traditional Owners of the Land, the Wurundjeri People

The Abbotsford Convent is on land that is of great historical, contemporary and cultural significance as a meeting place for the Traditional Owners of the land, the Wurundjeri Woi wurrung people of the Kulin Nation. Wurundjeri Woi wurrung people proudly maintain their connection to the site and contribute to the vibrancy of the Convent precinct. The Wurundjeri Woi wurrung Cultural Heritage Aboriginal Corporation, the peak body representing the Wurundjeri Woi wurrung people, have their primary office in the Convent's Providence building.

In 2017, Wurundjeri Woi wurrung Corporation partnered with the Abbotsford Convent Foundation to develop and deliver *Ngulu-nganjin*, (which means 'Our Voice' in Woi wurrung) a program celebrating contemporary Wurundjeri Woi wurrung culture through storytelling, song, ceremony and language revival. Led by Wurundjeri Woi wurrung woman and Artistic Director Mandy Nicholson and Musical Director and Language Activist Dr Lou Bennett AM, the project generated nine new music works that form a sound trail exploring the Convent precinct. Elder Aunty Diane Kerr provided a cultural framework for the project.

To celebrate the forthcoming sound trail, *Ngulu-nganjin* opened the Convent's flagship community festival, Open Spaces, on 17 November 2018. Programmed by Wurundjeri Woi wurrung Corporation and produced by the ACF, the program attracted more than 2,000 people and included live music, dance and ceremony, alongside a range of activities for audiences of all ages. A live performance of the sound trail's title track brought several generations together on the Gulanboon (Place of Many Stars) stage.

"Creating art is always a joy and in my thirty years' experience, I have had great opportunities working with some amazingly talented and gifted people. *Ngulu-nganjin* brought together Abbotsford Convent, Wurundjeri Council, Artistic Director Mandy Nicholson and myself to create a cultural sound trail of great significance. It was an absolute pleasure to work with everyone to bring *Ngulu-nganjin* to life and to see and experience the project in situ at the Abbotsford Convent. This is something I believe will stay with visitors for a lifetime. I encourage all visitors to the Convent to experience the language, stories and songs of the Wurundjeri and share the sound trail of *Ngulu-nganjin*. Ngalynda nginak." – Dr Lou Bennett AM

"It is an essential part of your cultural being to have language underpinning everything that you do and are. *Ngulu-nganjin* enabled all of us to have that voice, to feel culturally safe and to speak about our connections both physically, but more importantly, spirituality to place. Below, on, above and beyond are all elements of Country and these also form your spiritual body. Again *Ngulu-nganjin* enabled all ages of Wurundjeri women and girls to express this through the beautiful mentorship of Dr Lou Bennet who I hold so much respect for, for her knowledge, support and cultural understandings." – Mandy Nicholson

As the ACF's first major First Nations-led creative program, *Ngulu-nganjin* was a finalist in the 2019 Reconciliation Australia's HART (Helping Achieve Reconciliation Together) Awards. The program brings the richness of the Wurundjeri Woi wurrung culture and people to the centre of the Convent visitor experience, with the sound trail now available on personal mobile devices directly from the Convent website.

Ngulu-nganjin was made possible with funding from the Victorian Government's Rockin' the Laneways program.

Pictured: Djirri Djirri dancers at Open Spaces 2018, photo by Anne Moffat.

People



Community

Creative Convent-based Community

Our tenant community is the creative heart of the Convent. Abbotsford Convent is home to more than 150 creatives, organisations and wellbeing practitioners in studios, transforming the precinct into a bustling hub of artistic activity.

Many of our tenants conduct classes, workshops and events, sharing their skills and passions to enrich the fabric of the community. From craft meetups and painting classes to writers' workshops and improvisation classes, the Convent's tenants delivered over 85 programs to more than 11,340 visitors.

Made with love at the Convent

One major highlight for the tenant community was the launch of the Convent Made program, which showcases the many talented artists, thinkers, makers and creators who work onsite at the Convent. The program was officially launched with our first Convent Made Pop-Up Shop in St Heliers Street Gallery over two weeks in December. The shop was very successful, with 4,537 attendees. Tenants were similarly enthused, with 26 creatives participating.

Finding new audiences at major events

We're proud to offer our tenant community the opportunity to participate in major events hosted at the Convent, as part of our commitment to showcasing the people that call the Convent their creative home. Launching in 2019, Super Bloom Festival is a boutique wellbeing event which welcomed 2,200 people to the Convent across two massive days of talks, workshops, demonstrations and more. We showcased our WellBeing community at this major event, with a number of our onsite practitioners offering 1-on-1 taster sessions for attendees. The sessions were a hit, with all available sessions booking out very quickly.

A number of our Sacred Heart creatives banded together to showcase their practices as part of Craft Cubed Festival 2018, in a special day of workshops, demonstrations and open studios. Once again, our community was showcased as part of Open Spaces festival, with 47 tenants taking part in the Convent's biggest event of the year through open studios, demonstrations and more.

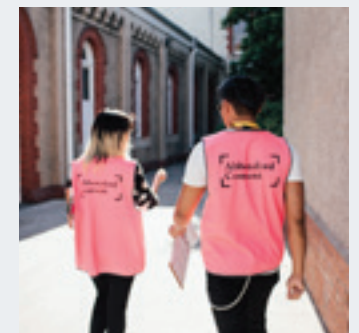
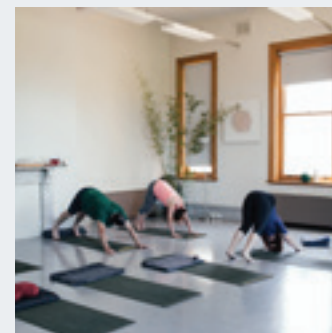
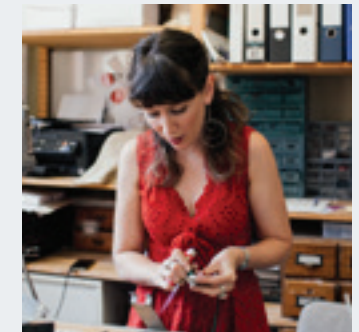
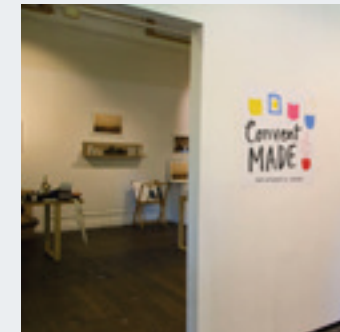
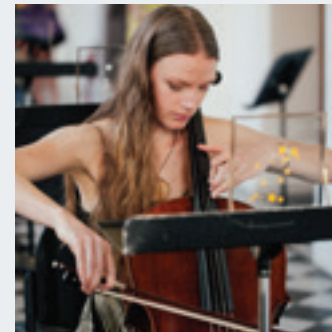
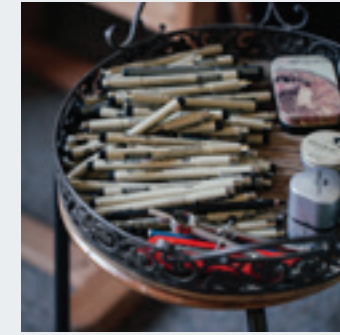
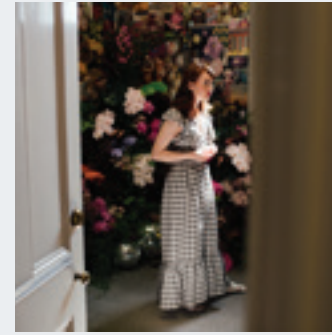
Volunteer community

Our volunteers are an essential part of the Convent community, playing a vital role in protecting our gardens, assisting in galleries, sharing the Convent's history, and providing a welcoming face for thousands of visitors every week. This year, 119 community volunteers generously donated 2,180 hours to the Convent in a variety of roles, including 754 hours volunteered in our gardens – an impressive 60% increase since last year.

The c3 Contemporary Art Space volunteer program continued to grow, with four additional volunteers, and the program's first arts writing workshop. This year, 12 volunteers took part in the program, donating 478 hours and learning professional skills along the way.

This year, the Convent invested further in the volunteer program through a dedicated support role, the Volunteer and Admin Coordinator. Since the role's commencement in late 2018, there has been a renewed focus on recruitment and orientation processes, and implementation of a new Volunteer Handbook.

Images from left to right, top to bottom: Minna Gilligan, detail from Lucy Hardie's studio, Melbourne Art Therapy, Print Safari, *Sound of Drawing* by Polyglot Theatre, garden volunteers, *Nocturne* by Jennifer Whitten, Convent Made Pop-up Shop, Kathryn Leopoldseder, One Heart Yoga Studio, Cone 11 Ceramics, volunteers at Open Spaces. All images by Anne Moffat with the exception of garden volunteers and Pop-up Shop images.



Protecting Our Place With A Long-Term Vision

Following nine months of meticulous conservation and restoration works, the North Magdalen Laundry officially opened to the community in June 2019. Led by Williams Boag Architects, with building works by FDC Construction & Fitout, and overseen by Heritage Victoria, this initial stage of works saw the North Laundry transformed from a derelict space to a new venue ready for creative activation and ongoing heritage interpretation.

Built in the 1880s, the Laundry had suffered from years of neglect after being decommissioned in the 1970s, with the building closed to the public for decades. Even for our experienced builders, FDC Construction & Fitout, who had previously worked on the restoration of Sacred Heart, this was a project without precedent.

“Builders are generally very good with a sledgehammer – but here, in this incredible space, we needed to use a velvet sledgehammer. We learnt a lot on this project and developed our passion for heritage projects. We’re privileged to have worked here with this team.” – Cameron Jackson, FDC Construction & Fitout

“What is especially unique about the Laundry is the social history and the difficult past of this space, and I think the project team has really done an excellent job in addressing this and using it as a starting point, not only for the conservation works, but also in guiding the future interpretation of this site. Instead of recreating an older decorative scheme, or perhaps beautifying it, we have retained the evolved colours and fittings, and retained the character. That is a different approach to many heritage projects that are occurring right now.” – Evelina Ericsson, Heritage Victoria.

“Once something has been neglected, it can actually rise above that condition. I believe design can make a difference. I’m not talking about nice door knobs or fittings, I’m talking about design in a holistic sense: about how you bring those forces together to make it something that enhances the human condition. We’ve made a contribution here that offers a cohesive and useful space for a whole range of people to discover.” – Peter Williams AM, Williams Boag Architects.

By reopening spaces like the Laundry for community use, we aim to share the architectural and social history of this nationally significant precinct, while creating new opportunities for creativity and collaboration. With the addition of this unique venue, Abbotsford Convent continues to grow as a hub for creative diversity and cultural exchange.

Stage 1 works in the Magdalen Laundry were generously supported by the Victorian Government through Heritage Victoria’s Living Heritage Program, and the John T Reid Charitable Trusts. The Convent will continue to advocate for more funding and resources to complete the project – in particular, to fully restore the two spectacular rooms at the southern end of the Laundry. While these spaces have now been stabilised, significant work is still required to make them available for a wide range of events run for and by the community, and to enable rich interpretation of this national treasure for our community now and for generations to come.

Pictured: Katie Lee, *Set Elements* 2017-19, *Temporal Proximities*, Magdalen Laundry, Abbotsford Convent, March 2019, Curated by Kelli Alred. Photo by Clare Rae.



A Place to Meet

With its impressive heritage gardens and range of unique spaces, the Convent is an unforgettable setting for a range of events, workshops, seminars, performances, rehearsals and much more. Each year the precinct plays host to hundreds of events, animating our spaces and bringing new and regular visitors to the Convent.

In total, this year saw over 103,000 people visit the Convent for markets, exhibitions, weddings, rehearsals, development days, performances and workshops. The Convent's market offering continues to remain strong, with 107 markets this year, spanning fresh produce, preloved books, vegan goods, and artisan wares.

A place for centre-stage moments

The Convent's popularity as a unique performance space continues to grow significantly. Ranging from classical music, to contemporary dance and world music, 300 performances graced the Convent's venues, a 203% increase on the previous year. One performance highlight this year included onsite music organisation The Boite World Music's 40th birthday celebrations, drawing 700 attendees.

A place for personal and professional development

From improvisation, writing and dance, to yoga, Feldenkrais and qigong, the Convent hosted over 730 classes and workshops, and 12,000 people learnt new skills and focused on their wellbeing; an increase of 33% on last year. Increasingly, organisations right across the not-for-profit and corporate spectrum are looking to the Convent as an inspiring setting for their teams and networks to meet, learn and grow. This year, we welcomed 570 meetings, 80 conferences, and 218 events.

We were pleased to welcome 300 social enterprise leaders and Social Traders buyer members for the annual Social Enterprise Conference in August 2018. The two-day conference showcased five of the Convent's spaces, and brought business, government and social enterprise speakers together to share key insights.

A place for wellness

The Convent was selected as the destination for a new boutique wellness festival, Super Bloom, held in April 2019. The event drew 2,200 attendees over the two-day festival, providing a packed program of workshops, talks and performances, and an inspiring atmosphere for attendees. From outdoor dance classes on the tennis courts, to yoga and sound healing in the Rosina Auditorium, the Festival spanned five of the Convent's venues and four outdoor spaces, truly transforming the precinct into an aesthetic wellness haven.

A place for raising a glass

Another major event drawing large crowds to the Convent was the third Brewers Feast held in February. The event welcomed 2,500 people in 2019 to enjoy craft beer, food and entertainment, and we look forward to hosting the next Brewers Feast in 2020.

A place to strike a pose

With its raw interiors, grand facades and lush gardens, the Convent is picture-perfect for film and photoshoots. This year, the Convent's popularity as a stunning backdrop increased significantly, with 273 film and photoshoots taking place onsite, including those for high profile organisations such as ANZ Banking Group, BuzzFeed and Furst Media.

Pictured: Super Bloom 2019. Photo by Ben Vella.



Protecting Our Precious Place

The Convent's strategic priority of 'place' drives the ongoing conservation and enhancement of our site's natural and built form to deliver a vibrant mix of cultural and community activities for all to enjoy. With the Convent inscribed on the National Heritage List in 2017, the ACF secured funding from the Australian Government towards a complete revision of our site-wide Conservation Management Plan. Completed in 2019, this comprehensive report will guide the next chapter of the Convent's history, ensuring our precious heritage assets are preserved and protected for future generations.

Sacred Heart restoration receives state-level recognition

The recently restored Sacred Heart building would not be the thriving place it is today without the passionate work of our heritage architects, builders, conservators and specialist tradespeople. The meticulous work of Kerstin Thompson Architects (KTA) has been formally recognised at the 2019 AIA Victorian Architecture Awards with the John George Knight Award for Heritage. This challenging restoration project was overseen by Heritage Victoria, and led by KTA and FDC Construction & Fitout.

Windows to Worlds

Thanks to the generous support of our community, our Windows to Worlds appeal raised critical funds to protect and conserve the vulnerable heritage windows of the main Convent Building, many of which were crafted over a century ago and still retain their original woodwork and glass. The ACF will commence works on the windows' conservation in late 2019.

Grounds and Gardens

The Convent's 6.8 hectares of green open space offers a place of retreat and inspiration for our community 365 days a year. We're working hard to ensure our heritage gardens survive and thrive for generations to come, and continue to play a vital role in connecting our growing community.

The much-loved Sapling School program was expanded as part of Convent Kids this year, delivering new seasonal environmental activities for children and families, thanks to the support of the Hamer Family Fund. The program was delivered by a Play Specialist in collaboration with landscape gardener and Convent tenant Matthew Henry, with more than 200 attendees. Matthew, with the approval of Heritage Victoria, also added some special touches to the landscaping in the Sacred Heart courtyard this year – creating custom-designed garden furniture and planter gabions built using slates, terrazzo tiles and other items recycled from the Sacred Heart restoration project.

Keep it Green

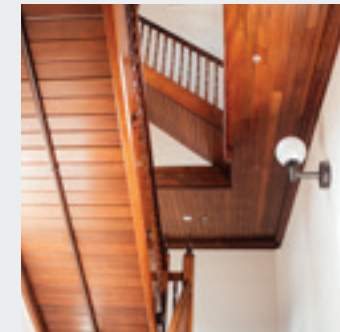
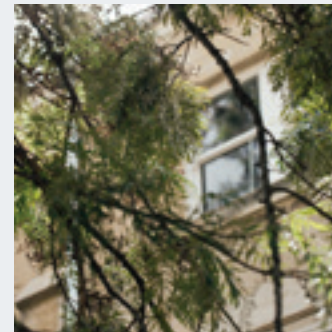
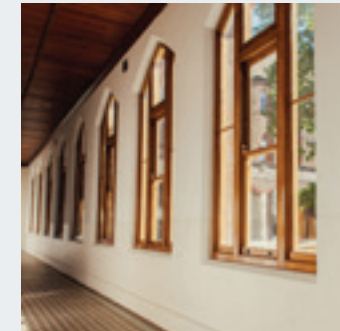
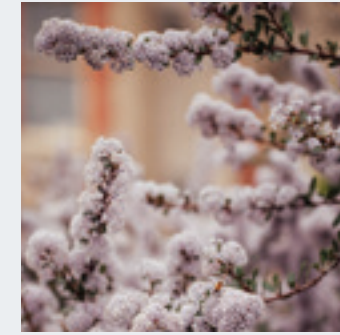
The 2018 Keep it Green: New Ground fundraising appeal sought to protect and reinvigorate Mercator grounds, an under-utilised space within the Convent's gardens and grounds. The appeal raised vital funds to bring this area to life for community use, including the installation of irrigation systems, new solar-powered lighting, the engagement of a specialist arborist to care for three heritage trees along the area's perimeter, and delivery of a new drought-tolerant planting regime.

Sustainability

This year saw a continued focus on capturing precious rainwater from the Sacred Heart and Laundry buildings for storage and reuse in our sprawling gardens. The Convent also installed additional water tanks to service the Mercator area and increase our water storage capacity.

We continue to encourage our visitors to use sustainable modes of transport, particularly when attending our busy markets and festivals. The Convent is a favourite spot for cyclists, so this year we added an additional eighteen bicycle hoops to the undercover bike parking area near the Convent's main gate.

Pictured: buildings and gardens photos by Anne Moffat.



Abbotsford Convent Foundation Arts Trust

Statement of Profit or Loss and Other Comprehensive Income

For the year ended 30 June 2019

	2019	2018
	\$	\$
REVENUE		
Donations	186,508	98,273
Grants Received	611,160	78,000
Interest Income	6,330	12,718
TOTAL REVENUE	803,998	188,991
EXPENDITURE		
Donations to Abbotsford Convent Foundation	517,467	2,277,158
Other Donations	-	2,000
Bank Charges and Fees	1,267	1,392
TOTAL EXPENDITURE	518,734	2,280,550
SURPLUS/(DEFICIT) BEFORE TAX	285,264	(2,091,559)
Income Tax Expense	-	-
SURPLUS/(DEFICIT) FOR THE YEAR	285,264	(2,091,559)
Other Comprehensive Income	-	-
TOTAL COMPREHENSIVE SURPLUS/(DEFICIT)	285,264	(2,091,559)

Notes to Financial Statements

Abridged financial statements: These abridged financial statements are prepared from the full audited financial statements. The Abbotsford Convent Foundation (ACF) is constituted as a company limited by guarantee. The company owns and manages the property at Abbotsford. The company also acts as trustee of the Abbotsford Convent Foundation Arts Trust. The financial statements are prepared in accordance with Australian Accounting Standards and Corporations Act 2001. The statements are audited by Banks Group and lodged with the ACNC. The ACF has tax-exempt status and is the trustee of the Abbotsford Convent Foundation Arts Trust, which is a Deductible Gift Recipient listed on the Register of Cultural Organisations. Donations over \$2 to the Abbotsford Convent Foundation Arts Trust are tax deductible. A complete set of financial statements is published at abbotsfordconvent.com.au

Abbotsford Convent Foundation Arts Trust

Statement of Financial Position

As at 30 June 2019

	2019	2018
	\$	\$
ASSETS		
Cash and Cash Equivalents	495,884	199,090
Term Deposit	162,327	159,050
Trade and Other Receivables	1,448	3,755
TOTAL CURRENT ASSETS	659,659	361,895
TOTAL ASSETS	659,659	361,895
LIABILITIES		
Trade and Other Payables	12,500	-
TOTAL CURRENT LIABILITIES	12,500	-
TOTAL LIABILITIES	12,500	-
NET ASSETS	647,159	361,895
Settlement Amount	100	100
Retained Income	647,059	361,795
TOTAL EQUITY	647,159	361,895

Abbotsford Convent Foundation

Statement of Profit or Loss and Other Comprehensive Income

For the year ended 30 June 2019

	2019	2018
	\$	\$
OPERATING REVENUE		
Car Park Income	1,068,739	1,025,551
Events	170,419	124,178
Grant Income for Operating Activities	254,696	276,721
Room Hire	620,887	572,005
Rental Income	1,732,167	1,515,705
Recoveries of Outgoings	120,503	112,815
Other Revenue	17,768	18,862
TOTAL OPERATING REVENUE	3,985,179	3,645,837
Interest Income	8,816	16,969
	3,993,995	3,662,806
OPERATING EXPENDITURE		
Administration	167,004	26,999
Advertising and Marketing	37,539	29,369
Car Parking	237,902	232,334
Fundraising	24,252	10,537
Insurance	117,141	113,736
Programming	308,215	196,949
Rates and Taxes	62,089	63,986
Site Operating Costs	960,978	757,797
Staff and Employee Expenses	1,890,768	1,851,653
Other Expenses	207,505	170,821
TOTAL OPERATING EXPENDITURE	4,013,393	3,454,181
Operating Result Before Depreciation	(19,398)	208,625
Depreciation	802,845	601,811
OPERATING RESULT AFTER DEPRECIATION	(822,243)	(393,186)
CAPITAL GRANTS AND DONATIONS		
Grant Income for Capital Projects	1,564,967	5,527,782
Donations	5,739	8,431
TOTAL GRANTS, DONATIONS & SPONSORSHIP	1,570,706	5,536,213
SURPLUS FOR THE YEAR	748,463	5,143,027
Income Tax Expense	-	-
Surplus for the Year	748,463	5,143,027
Other Comprehensive Income	-	-
TOTAL COMPREHENSIVE SURPLUS	748,463	5,143,027

Abbotsford Convent Foundation

Statement of Financial Position

As at 30 June 2019

	2019	2018
	\$	\$
CURRENT ASSETS		
Cash and Cash Equivalents	744,468	1,478,694
Tenant Bond Deposits	267,555	276,366
Trade and Other Receivables	131,180	605,327
Prepayments	121,778	115,160
Security Deposits	31,513	30,693
TOTAL CURRENT ASSETS	1,296,494	2,506,240
NON-CURRENT ASSETS		
Property, Plant and Equipment	18,743,638	17,036,483
TOTAL NON-CURRENT ASSETS	18,743,638	17,036,483
TOTAL ASSETS	20,040,132	19,542,723
CURRENT LIABILITIES		
Trade and Other Payables	430,366	736,274
Deferred Income	98,471	46,062
Rental Bonds and Deposits	272,794	281,764
Employee Benefits	140,795	130,762
TOTAL CURRENT LIABILITIES	942,426	1,194,862
NON-CURRENT LIABILITIES		
Employee Benefits	28,641	27,259
TOTAL NON-CURRENT LIABILITIES	28,641	27,259
TOTAL LIABILITIES	971,067	1,222,121
NET ASSETS	19,069,065	18,320,602
Equity	19,069,065	18,320,602
TOTAL EQUITY	19,069,065	18,320,602

Supporters

The ACF acknowledges the financial and philanthropic support of the following people and organisations who contributed to the ACF and the Abbotsford Convent Foundation Arts Trust in 2018/2019.

We also acknowledge the vision of the Abbotsford Convent Coalition whose members campaigned for seven years to secure this precinct. This success would not have been achieved without their commitment, and that of many others. Over the years, the Convent project has also been greatly assisted by a vast number of individuals and organisations who have contributed their time, energy, skills and financial support. The ACF is extremely grateful to all those who have provided support.

Principal Donors

Michael Adena
& Joanne Daly
Krystyna Campbell-Pretty AM
Simon Cowen
Peter Griffin AM
& Terry Swann
Diana Heggie
Anne Kantor AO
David Laidlaw
& Megan Laidlaw
Baillieu Myer AC
& Sarah Myer
Sally Romanes
Jeff Thompson
& Kathryn Culley
Janette Norma Tourrier Bequest

Major Donors

Charlotte Allen
& Prof Peter McPhee AM
Helen Brack
Collette Brennan
Mavourneen Cowen
Alison Duncan
Hans Henkell
& Petra Henkell
Graeme Johnson OAM
& Joan Johnson
Ronald Alan Jones
& Georgina Whitehead
Maggie Maguire OAM
Victoria Marles
John McLeod
& Paula McLeod
Margaret McVey
Phillip Schudmak
Greg Shalit
& Miriam Faine
Terence Teo
& Belle Teo
Moyna Wilson

Key Supporters

Michael Cowen
Anthony Cullen
Robert Dimattina
Robert Hocking
& Tina Hocking
Michael Jan
Ruth Jones
Peter Kelly
Karen Large
Emily Lin
Judy Matear
Pamela McLure
Sir Gustav Nossal AC CBE
& Lady Nossal

Sara O'Callaghan
Alex Patton
& Anna Lucas
The Hon Justice Michelle Quigley QC
Michael Sokulski
Dr Bob Sullivan
Paul Whitten
& Jennifer Whitten
Judy Williams
& Peter Williams AM

Friends

Robyn Bainbridge
Dr Christopher Baker
Judy Banks
Heather Barton
Julia Blunden
Bruce Butler
Jay Catoggio
Prof Martin Comte OAM
Alan Daley
Suzanne Davies
Sandie de Wolf AM
John Di Natale
Anna Dollard
Helen Donnard
Anne Dowling
& Tom Dowling
Robyn Dwyer
& Denis Dwyer
Anthony Felettigh
Prof David Forrest
Dr Joseph Galbally
Nicholas Garnham
Lois Goodin
Stephen Gow
& Mary Gow
Susie Grabsch
Matthew Grazia
Meredith Greenwood
& Prof Peter Rendell

Andrew Gunn
Jean Hedges
Ria Harrison
John Horacek
The Hon Brian Howe AO
& Renate Howe AO
Dawn Kanost
Prof Stuart Kells
Roger King OAM
Giovanna Luciani
Jessica Luu
Dr Sally Manuell
& Peter Boyle
Philip Martin
Margaret McNaughton
Hilary McPhee AO
Traudl Moon OAM
Judy Morton
Christine Mullen
Alexandra Murphy
Elizabeth Phillips
Emilio Raviola
Ian Renard AM
Warren Rixon
Janey Runci
Pamela Saunders
& Barry Saunders
Bruce Sims
Mike Smith
Lady Southey AC
Antonia Syme
Tom Tonkin
Charma Voller
Liam Wallis
& Katya Crema
Lorrae Wild
George Willox
Dr Jin Woo
Trudy Wyse

Trusts & Foundations

Principal Partner

The Dara Foundation

Major Partners

The John T Reid Charitable Trusts
Lord Mayor's Charitable Foundation
The Lionel & Yvonne Spencer Trust

Supporting Partners

The Angior Family Foundation
Ballandry (Peter Griffin Family)
Fund: a sub-fund of the Australian
Communities Foundation
Bowness Family Foundation
The Danks Trust
The Hamer Family Fund: a sub-fund
of the Australian Communities
Foundation
Henkell Family Fund: a sub-fund
of the Australian Communities
Foundation
Lord Mayor's Charitable
Foundation: Youth in Philanthropy
McLeod Family Foundation
Robert Salzer Foundation

Corporate Partners

Allens Linklaters
Deloitte
FDC Construction & Fitout
Williams Boag Architects

Government Project Supporters

Australian Government:
Department of Environment &
Energy
Creative Victoria

City of Yarra
Public Record Office Victoria

Corporate Supporters

Aesop
Arbortryst Pty Ltd
Art Guide Australia
Colour Factory
MAV Melbourne

Event Partners

3MBS Fine Music Radio
Bursaria Fine Foods
Blackhearts & Sparrows
Convent Bakery
Kawai
Terrace Gardens Florists

Capital Projects

Sacred Heart

Department of Infrastructure and
Regional Development's National
Stronger Regions Fund
The Dara Foundation
Kerstin Thompson Architects
FDC Construction & Fitout

North Magdalen Laundry: Stage 1

Victorian State Government
Department of Environment,
Land, Water & Planning: Heritage
Victoria's Living Heritage Fund
John T Reid Charitable Trusts
Williams Boag Architects
FDC Construction & Fitout

Board and Team

Board

Victoria Marles, Chair
David Laidlaw, Deputy Chair
Diana Heggie
Ronald Jones
Ruth Jones
Stuart Kells
Michael Sokulski
Antonia Syme
Elizabeth Ward-Christie (until 10/12/18)
Judy Williams

Team

Executive

Chief Executive Officer:
Collette Brennan
Chief Operating Officer:
John Di Natale

Administration

Accounts Manager:
Ilona Molyte
Assistant Accountant (P/T):
Theresa Bernstein (until 12/10/18)
Accounts Coordinator (P/T):
Shona Kohler (from 14/02/19)
Governance & Operations Officer:
Thomas Rendell
Administrator:
Sherry McLane Alejos
Volunteers & Admin Coordinator:
Alice Brush (from 8/11/18)

Buildings & Facilities

Buildings & Facilities Manager:
David Campbell
Facilities Coordinator:
Peter Mandersloot
Head Gardener (P/T):
Simon Taylor
Site Coordinators (P/T & casual):
Paul Blakeney, Reg Gaudon, Jack Hall, Milad Nemati, Ben Steiner, Jason Hood

Development & Fundraising

Head of Development:
Alexandra Murphy
Development Coordinator (P/T):
Emily Boyle

Marketing & Communications

Marketing & Communications Manager:
Holly Cochrane
Communications Coordinator:
Laura Bianchi

Programming

Producer:
Chloe Weavers
Programs Coordinator:
Jacqueline Hanlin
c3 Contemporary Art Space Director:
Jon Butt
c3 Contemporary Art Space Gallery Manager (P/T):
Katie Paine

Tenancy

Tenancy Community Manager:
Leonie Wray
Studio & Leasing Coordinator:
Catriona Black-Dinham (until 2/11/18)
Luke Gianfriddo (from 8/10/18)

Venue Hire

Venues Manager:
Renee Daniele
Venues Coordinator:
Nada Ćordašić

Volunteers

Volunteers

Georgie Alexander
Alan Ali-Zwart
Judith Allen
Tam Altmann
Graham Annal
Laura Barclay
Jade Barnaby
Janet Bennett
Gabrielle Bergman
Megan Bonny
Jasmine Bouvier
Naomi Callander
Jessamine Capuyan
Rhys Cartledge
Kieran Casey
Jessica Castro
Jerz Cerna
Ginny Chan
Sisi Chen
Tammy Chen
Rananjay Chundawat
Chloe Connolly
Marie-Claire Courtin
Sophie Cunningham
Eliza De Burgh
Sandra Del Monaco
Anouk Dijkman
Joanne Dinh
Peter Dunn
Louisa Edwards
Rubyanna Edwards
Carlos Fuentealba Godoy
Mirella Gigliotti
Wendy Grace
Felicity Gray
Madonna Grehan
Philippa Griffin
Shahmeer Haq
Rose Hartley

Ambrin Hasnain
Sandeep Henry
Nicola Isaacs
Sujin Jung
Gabrielle Keating
Peter Kelly
Susan King
Naasica Larsen
Henry Law
Sally Ann Lawford
Jungmoon Lee
Vanessa Lee
Jiaqi Liu
Meng Liu
Pi-Chia Liu
Heather Loomes
Rafael Lopez Buelvas
Jacqueline Luty
Leith Maguire
Harriet Maher
Matthew Maida
Audrey Mailhot
Gurmehak Mann
Bennett Martin
Annabel Mason
Eliza McCracken
Georgia McGirr
Robyn McMicking
Sarah McRitchie
Margaret McVey
Josephine Mead
Melissa Meaker
Joy Millen
Jacqueline Moore
Alison Murphy
Joel Naughton
Melinda Nicol
Rema O'Neill
Nuala O'Sullivan
Karen Ong

Tinieka Page
Alex Papanotas
Mary Peacock
Tahlia Pearce
Beatrice Perrone
Tana Phoenix
Genevieve Pikó
Mark Potter
Ana Puchau
Grace Quiason
Nicky Robinson
Angela Rossitto
Clive Rumney
Ben Russel
Amanda Russell
Eddie Schubert
Sophie Shipperbottom
Megan Sinclair
Georgia Smith
Annie Song
Sallyanne Stevenson
Liam Sydow
Yuan Tan
Eleanor Teig
Nancy Vanin
Pam Walford
Julie Walker
Bruce Ward
Mitchell Ward
Ruby Wiles
George Willox
Moyna Wilson
Sophie Wilson
Amanda Wolf
Yiyun Yan
Emmaline Zanelli
Peter Zeidler
Mandy Zhang
Ivy Zhu
Qian Zhu

Thank You



Your support protects, enriches and enlivens the Abbotsford Convent precinct

The Abbotsford Convent precinct is owned and managed by the Abbotsford Convent Foundation (ACF) – an independent, not-for-profit organisation – on behalf of the community.

As custodians of the Convent precinct, it's our privileged responsibility to care for, maintain and protect our 11 heritage buildings – as well as our precious and expansive 6.8 hectares of green landscapes; places of retreat and sanctuary for all.

With the support of our growing community of donors and partners, we take enormous pride in restoring, nurturing and enlivening this iconic arts and cultural hub, piece by piece, for the enjoyment of the people of Melbourne and Australia.

Now proudly sitting on the National Heritage List, it takes a significant amount of time, energy, specialist support and resources to care for this iconic place – and we couldn't do it without the generosity of the community who care enough to contribute to see it thrive.

The ACF does not receive any recurrent government funding, from any level of government, to manage or maintain the Convent grounds – nor to activate the Convent precinct with a range of diverse and engaging arts and cultural programming year-on-year. We rely on our social enterprise model alongside the support of passionate, community-minded individuals, organisations and philanthropic partners to help protect, maintain and bring the Convent precinct to life each year.

If you love your time spent at the Convent, and feel grateful for this extraordinary community asset, please join our growing community of supporters and make a donation today.

The Convent was saved by the community – for the community – and your support will make a direct and meaningful impact; helping to keep it thriving for generations to come.

If this is a place that is meaningful in your world, please help safeguard it for the future.

