

IT | Istruzioni Di Montaggio  
 GB | Assembly Instructions  
 FR | Instructions de montage  
 DE | Montageanleitung  
 ES | Instrucciones de montaje



Min 0,5  
 Max 5



Max 70°

**Only for Australia:**

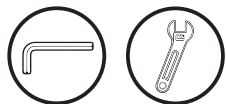
**Max Static Pressure:** 1000 kPa, **Min Pressure:** 150 kPa

**Recommended Dynamic Pressure:** 300 kPa

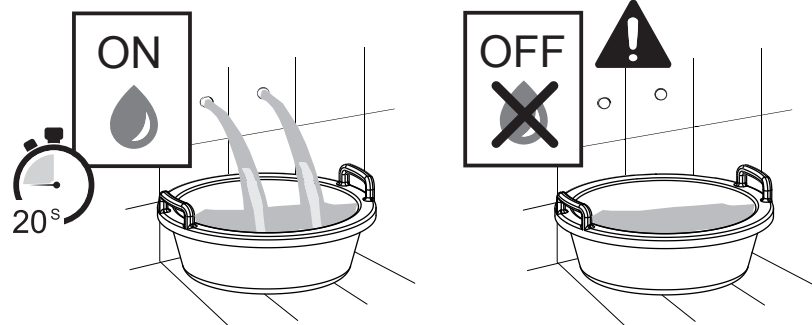
This installation is subject to the requirements of the applicable regulatory authority, the National Construction Code Volume Three - Plumbing Code of Australia, associated reference standards as applicable at the time and AS 3718: 2021.

IS00002700

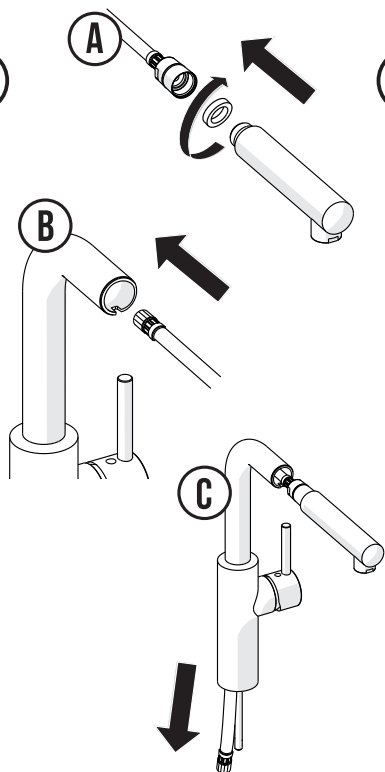
Non incluso | Not included | Non Inclus | Nicht enthalten | No incluido



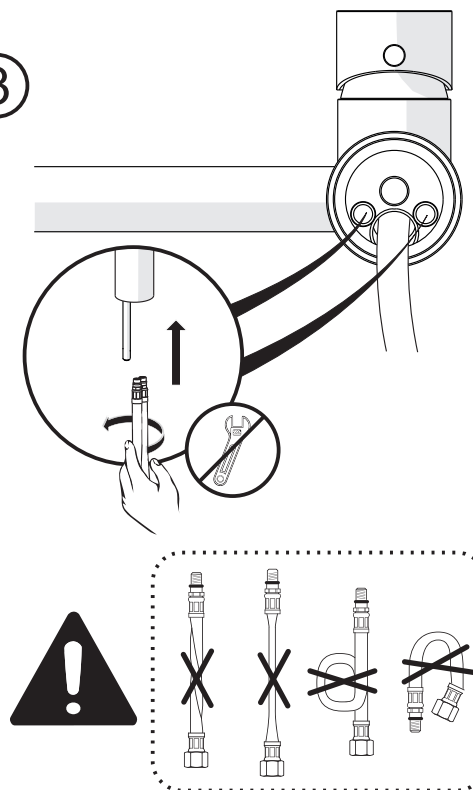
1



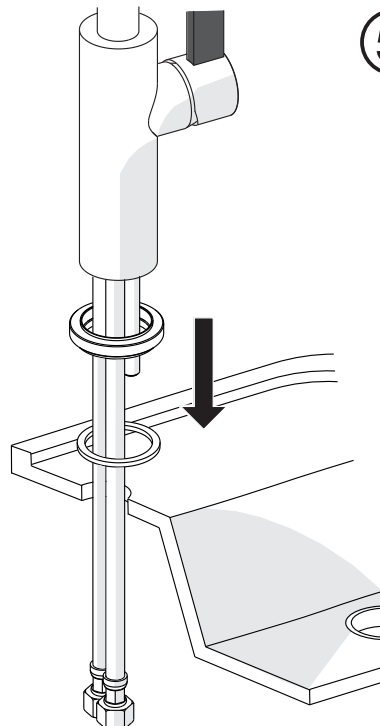
2



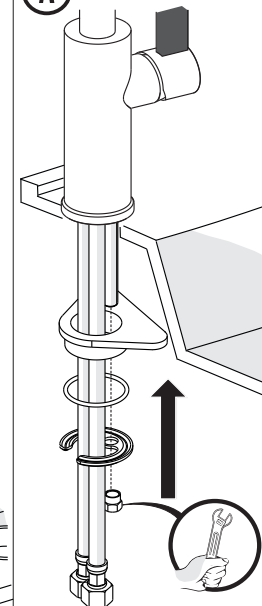
3



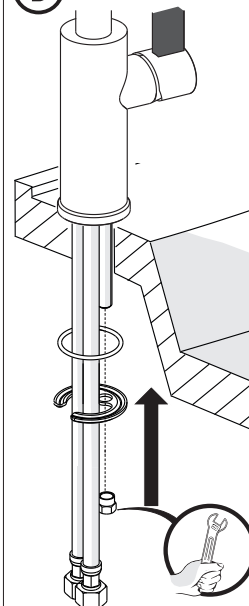
4



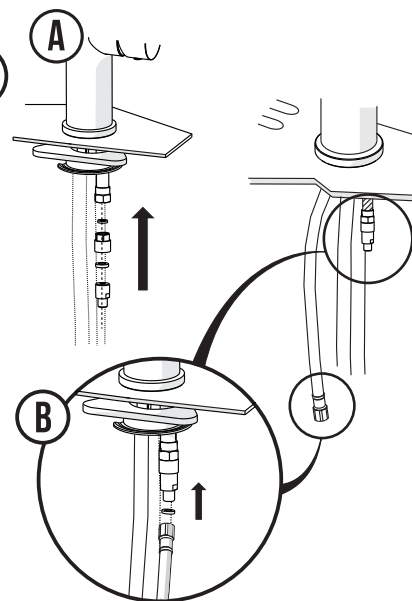
5 A



5 B



6



7

