

BUILDER INSTALLATION GUIDE



PROFESSIONAL TIPS

Step-by-Step Help
Tools & Techniques
Quality Assured



TAP ANY PAGE NUMBER TO JUMP

1

TAP ANY PAGE NUMBER TO JUMP

2

TAP ANY PAGE NUMBER TO JUMP

3

TAP ANY PAGE NUMBER TO JUMP

4

LUCIA **TAPWARE**

BASIN MIXER	8
WALL SPOUT	10
SHOWER MIXER DIVERTER TRIM	12
WALL MIXER TRIM KIT	16
WALL SET TRIM KIT	20
WALL SET TRIM KIT	20

SHOWERS

DUAL SHOWER	26
MINI DUAL SHOWER	30
RAIL SHOWER	34
SHOWER HEAD	38

INTERNALS

SHOWER MIXER DIVERTER INTERNAL	44
WALL SET INTERNAL	48
SHOWER MIXER INTERNAL	52

KITCHEN MIXER & ACCESSORIES

KITCHEN MIXER	58
PULLOUT KITCHEN MIXER	62
ACCESSORIES	66

CARE & MAINTENANCE	4
INSTALLATION CONDITIONS	5
WARRANTY	68

Care and Maintenance

Here are a few simple tips to help keep your tapware looking great and working smoothly.



TEMPERATURE LIMIT

Maximum hot water temperature: 75°C.



WARRANTY NOTICE

Failure to follow these guidelines may void the warrant



CLEANING

Clean regularly with a soft cloth and warm soapy water. Avoid abrasive cleaners, scouring pads, and acidic or harsh chemicals, as these may damage the finish. Rinse off any residue immediately and dry to prevent water spots.



WATER PRESSURE

Recommended pressure 150–500 kPa. Install a pressure-limiting valve if pressure exceeds 500 kPa.



PIPE FLUSHING

Flush all pipework before and after installation to remove debris.

Installation Conditions



All product information is current at the time of printing. Abey reserves the right to change product features, packaging, or types without notice. Please retain these installation instructions.

LICENSED PLUMBER REQUIRED

All work must be completed by a licensed plumber in accordance with AS/NZS 3500.

Flush all pipework before installation.

If pressure exceeds 500 kPa, fit a certified pressure-limiting valve.

Install isolating stop taps on both hot and cold inlets.

WARRANTY GUIDELINES

The plumber or tradesperson must provide a certificate or document showing the work done and tests completed. This must be kept if a warranty claim is made.

Refer to the care guide for correct cleaning.

Non-compliance may void the warranty.

HOSE & TEMPERATURE

Avoid kinking, twisting, and overstretching flexible hoses, and maintain a minimum bend radius of 25 mm.

A tempering valve is required if water temperature exceeds 75°C.

For domestic use only.

LUCIA[•]
TAPWARE

Tap here
Return to index



ABEY BUILDERS
TAPWARE

Abey Builders Tapware

TAP THE PRODUCT TO JUMP TO THE PAGE.



BASIN MIXER



WALL SPOUT



SHOWER MIXER
DIVERTER TRIM KIT



WALL MIXER
TRIM KIT



WALL SET TRIM KIT

Basin Mixer

[Tap here](#)
Return to index

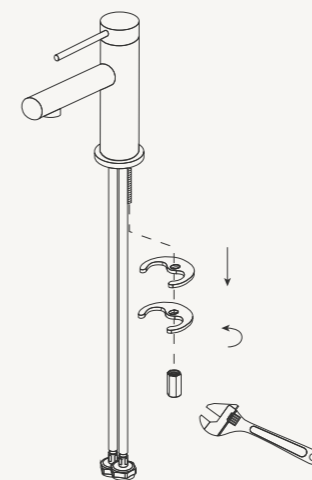


PRE-INSTALLATION

Before installation, all pipework must be thoroughly flushed to prevent debris from blocking the flow. The aerator insert housing should be tightened to ensure it cannot be removed by hand. This mixer must be installed using isolating stop taps in accordance with local plumbing codes. Installation must be completed by a licensed plumber, failure to do so may void the product warranty.

INSTALLATION CONDITIONS

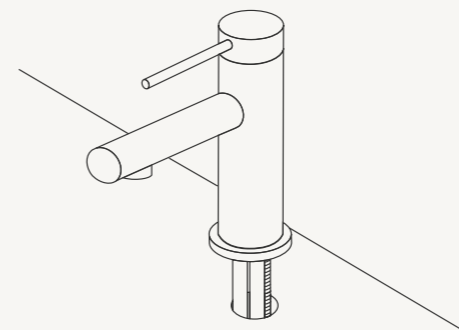
The recommended operating pressure for this product is between 150–500 kPa. If water pressure exceeds 500 kPa, a pressure-limiting valve must be installed, as excessive pressure may damage the tap and void the warranty. The working temperature range is between 1°C and 80°C. This tap is manufactured to comply with AS 3718 and must be installed in accordance with the Plumbing code of Australia as well as AS/NZS 3500.



1

SECURE MIXER

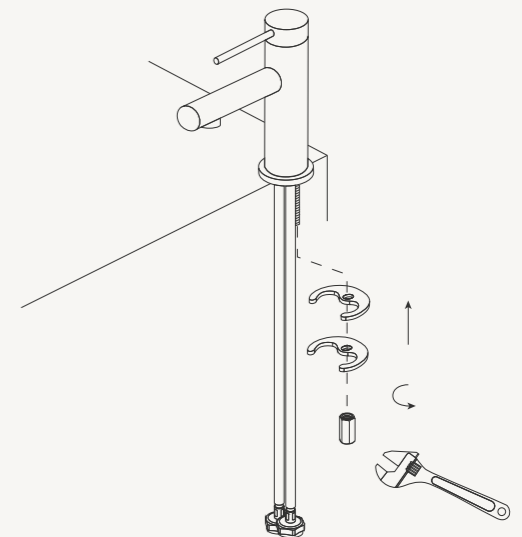
Place the rubber gasket on the mixer base and insert mixer through the basin mounting hole. From underneath the basin, fit metal washer and fixing nut onto the mixer thread. Secure fixing nut using a spanner, ensuring the mixer is stable and correctly positioned.



2

PREPARATION

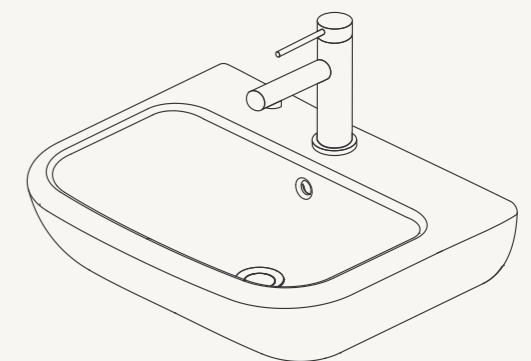
Ensure all components are correctly positioned and the mixer is sitting securely on the basin.



3

CONNECT WATER SUPPLY

Attach the hot and cold flexible hoses to the corresponding water supply valves. Ensure all connections are tightened firmly to prevent leaks.



4

FINAL CHECK

Turn on the water supply and check for any leaks. Ensure the mixer operates smoothly with both hot and cold water flow.

Wall Spout

[Tap here](#)

[Return to index](#)



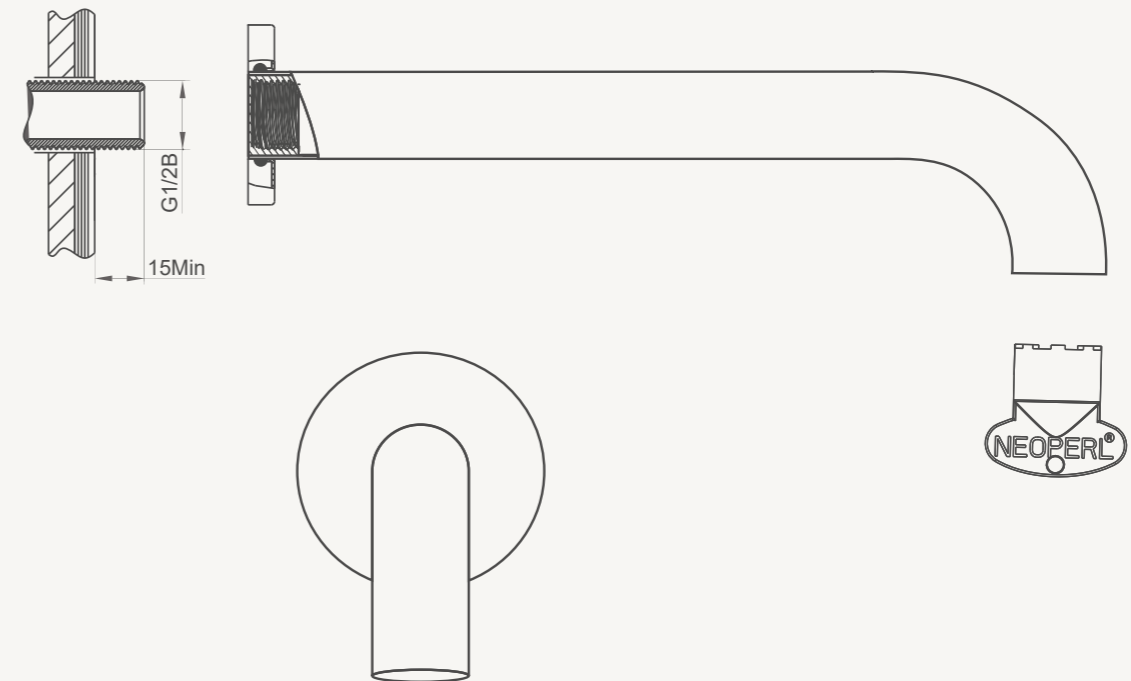
PRE-INSTALLATION

Before installation, all pipework must be thoroughly flushed to remove any debris, as foreign material may block the flow-regulating device and reduce water flow. The aerator insert housing must also be tightened to prevent removal by hand.

INSTALLATION CONDITIONS

The recommended operating pressure for this product is between 150–500 kPa. If water pressure exceeds 500 kPa, a pressure-limiting valve must be installed, as excessive pressure may damage the tap and void the warranty. The working temperature range is between 1°C and 80°C. This tap is manufactured to comply with AS 3718 and must be installed in accordance with the Plumbing code of Australia as well as AS/NZS 3500.

Reference Drawing



1

PREPARE THE THREADED NIPPLE

Check that the threaded nipple is the correct length for the installation. Wrap thread tape around the nipple, ensuring it is secure and that no loose tape can dislodge and obstruct the flow regulator inside the spout.

3

FINAL CHECK

Turn on the water and check all connections for leaks. Ensure the spout is securely positioned and that the flow is unrestricted.

2

ASSEMBLE THE SPOUT AND FLANGE

Insert the O-ring into the groove of the flange, then slide the flange over the inlet of the wall spout. Carefully screw the spout, followed by the flange, onto the threaded nipple. Align the spout and flange to the desired position, do not overtighten.

Shower Mixer Diverter Trim Kit

[Tap here](#)

[Return to index](#)

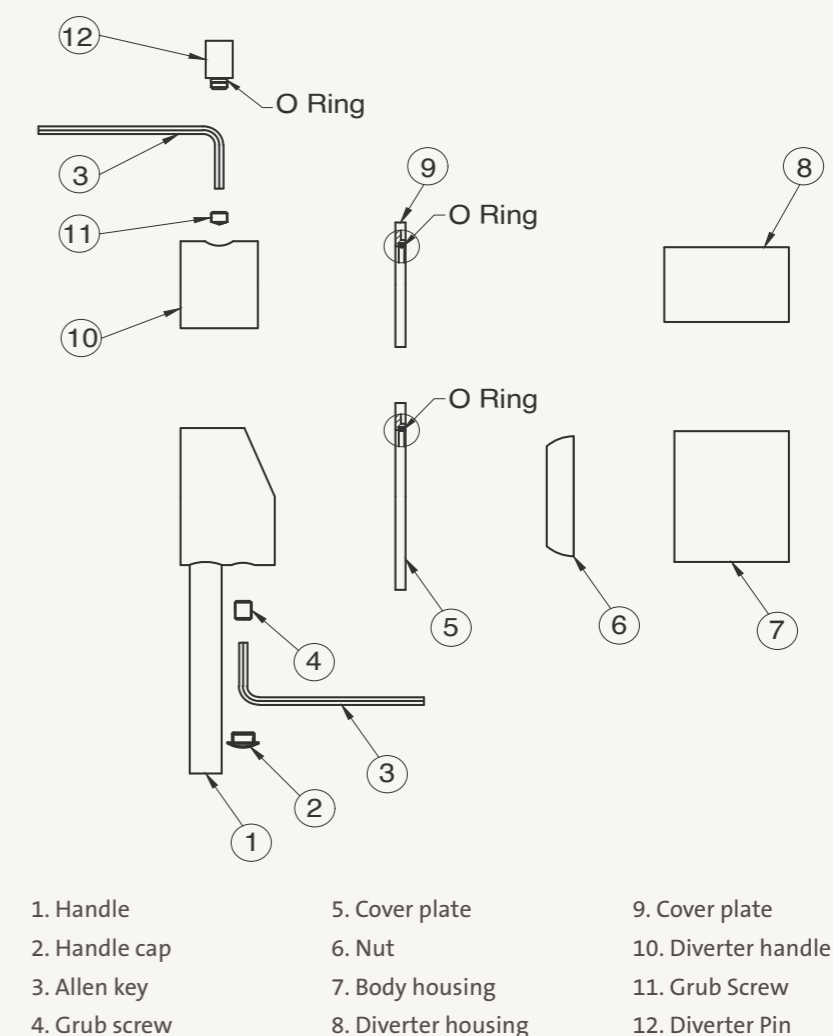


INSTALLATION CONDITIONS

Install isolating stop taps prior to installation. Ensure the hot and cold inlet pressures are balanced for optimal performance. The recommended operating pressure range is 150–500 kPa. If pressure exceeds 500 kPa, install a suitable pressure-limiting valve.

The working temperature range is 1°C to 80°C. Lubricate all concealed O-rings with soapy water or approved plumber's grease before installation to prevent damage and ensure proper sealing. Do not remove protective covers until final fit-off is complete. This product is manufactured in compliance with AS 3718 and must be installed in accordance with the Plumbing Code of Australia and AS/NZS 3500.

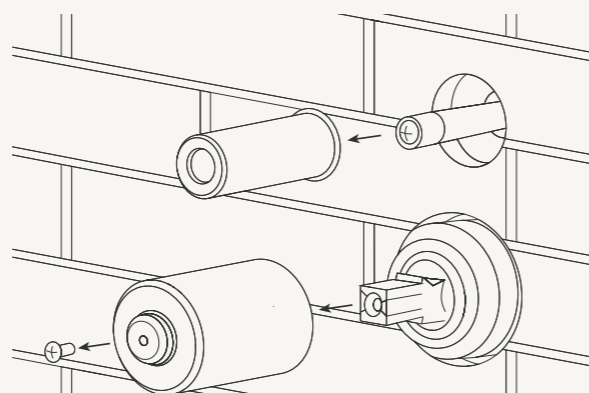
Installation Diagram



PRE-INSTALLATION

Trim kits and in-wall body kits are packaged separately. Follow the trim kit instructions for installation. The plumber is responsible for waterproofing tap penetrations in wet areas using a flange system or sealant as per AS3740. Sealant used around wall penetrations must not obstruct removal of protective sleeves (2 & 9) or trim installation. Do not braze directly onto the mixer to avoid heat damage. Thoroughly flush all pipework before installation.

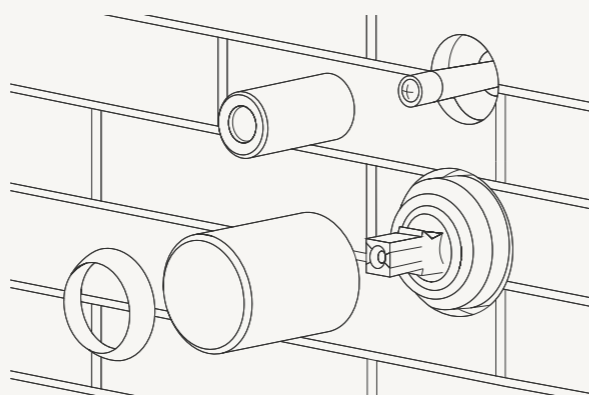
Installation Instructions



1

REMOVE PROTECTIVE HOUSINGS

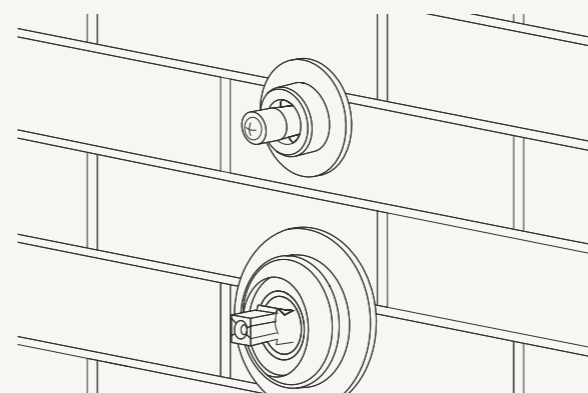
Remove grub screw and both housings (Ø40mm & Ø21mm) from internal.



2

PREPARE AND ATTACH HOUSINGS

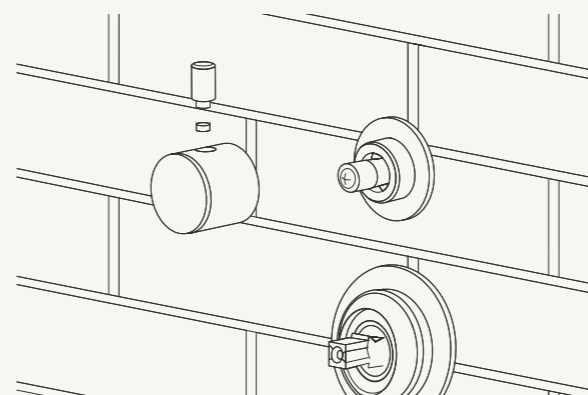
Apply silicone oil inside the body housing. Attach the body and diverter housings to internal.



3

PREPARE O-RINGS AND COVERS

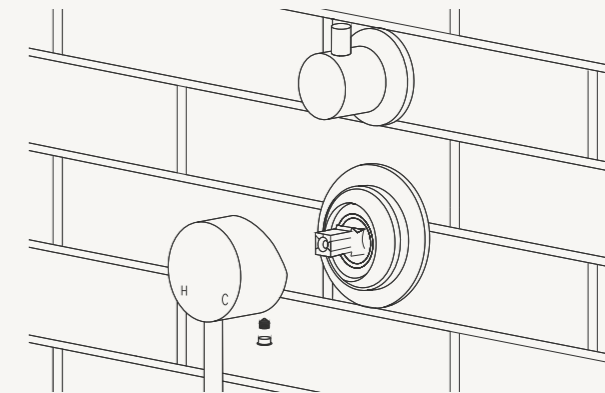
Coat O-rings (5 & 9) and back of cover plates (5 & 9) with silicone oil and install.



4

FIT DIVERTER HANDLE

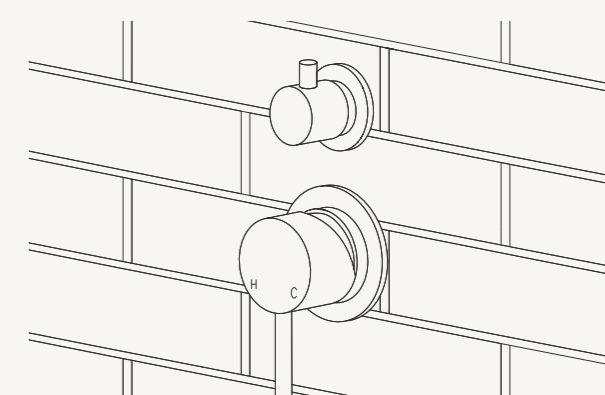
Install the diverter handle, grub screw, and diverter pin securely.



5

ATTACH MAIN HANDLE

Fit the handle, handle cap, and grub screw onto the assembly.



6

FINAL CHECK

Test the handle to ensure correct water flow and proper function.

Wall Mixer Trim Kit

[Tap here](#)

[Return to index](#)

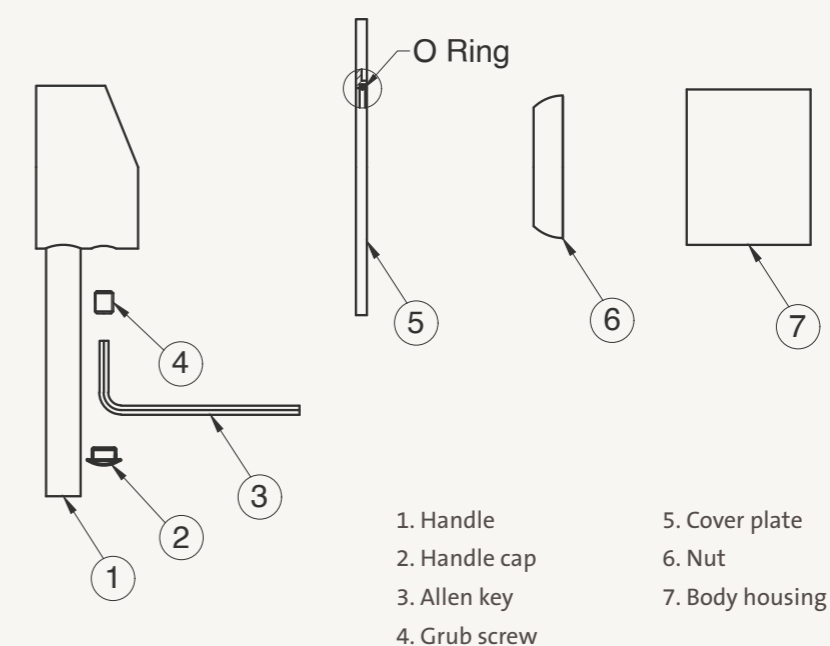


INSTALLATION CONDITIONS

Install isolating stop taps prior to installation. Ensure the hot and cold inlet pressures are balanced for optimal performance. The recommended operating pressure range is 150–500 kPa. If pressure exceeds 500 kPa, install a suitable pressure-limiting valve. The working temperature range is 1°C to 80°C.

Lubricate all concealed O-rings with soapy water or approved plumber's grease before installation to prevent damage and ensure proper sealing. Do not remove protective covers until final fit-off is complete. This product is manufactured in compliance with AS 3718 and must be installed in accordance with the Plumbing Code of Australia and AS/NZS 3500.

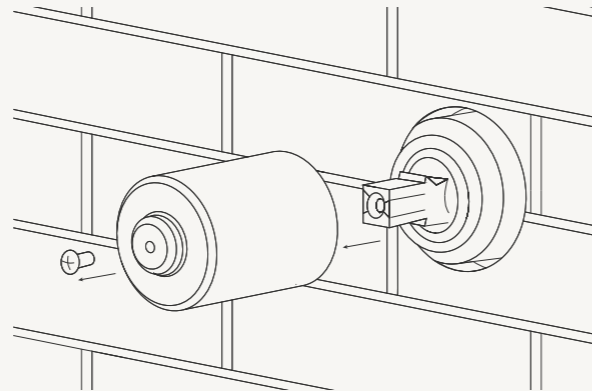
Installation Diagram



PRE-INSTALLATION

Trim kits and in-wall body kits are packaged separately. Follow the trim kit instructions for installation. The plumber is responsible for waterproofing tap penetrations in wet areas using a flange system or sealant as per AS3740. Sealant used around wall penetrations must not obstruct removal of protective sleeves (2 & 9) or trim installation. Do not braze directly onto the mixer to avoid heat damage. Thoroughly flush all pipework before installation.

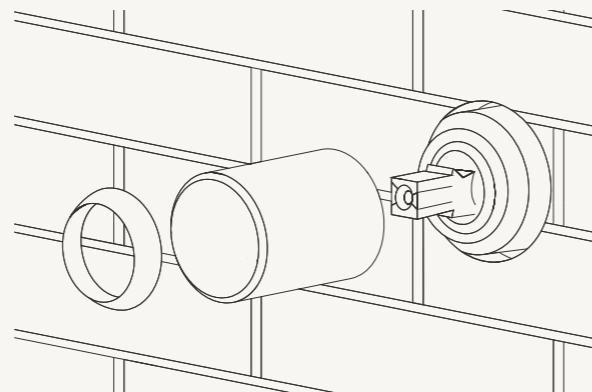
Installation Instructions



1

REMOVE PROTECTIVE HOUSING

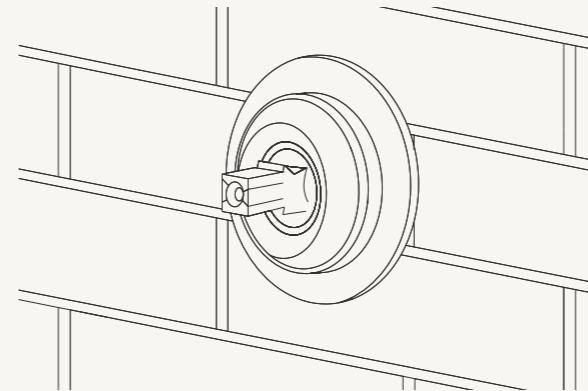
Remove grub screw and protective housing (Ø40mm) on the body.



2

PREPARE AND SECURE THE NUT

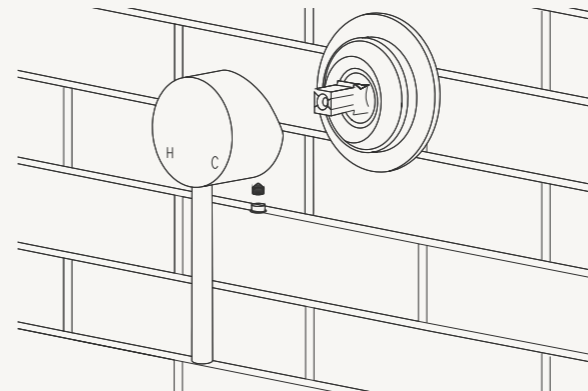
Apply silicone oil inside the body housing and lock the nut onto the body.



3

PREPARE O-RING AND COVER PLATE

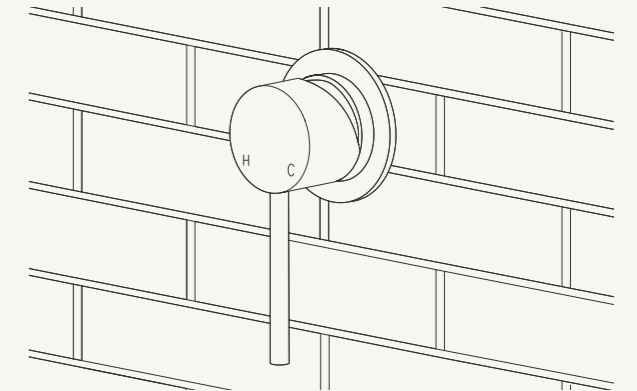
Coat O-ring and back of cover plate with silicone oil and install.



4

ATTACH HANDLE

Install the handle, handle cap, and secure with the grub screw.



5

FINAL CHECK

Ensure correct installation by testing water flow with the handle.

Wall Set Trim Kit

[Tap here](#)

[Return to index](#)



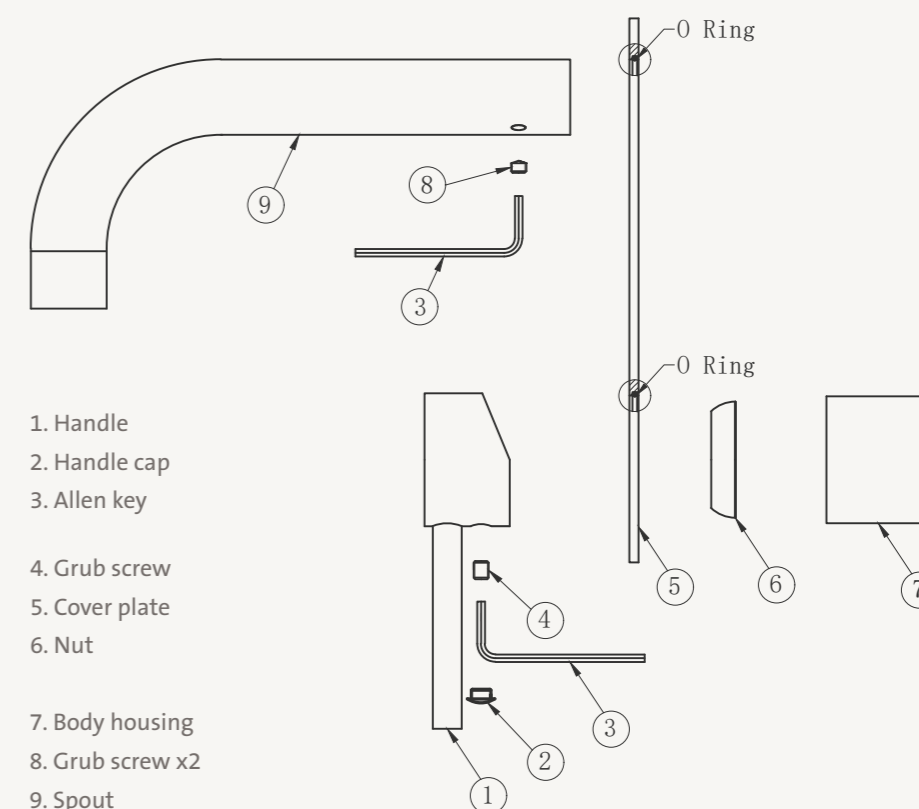
INSTALLATION CONDITIONS

Install isolating stop taps prior to installation. Ensure the hot and cold inlet pressures are balanced for optimal performance. The recommended operating pressure range is 150–500 kPa. If pressure exceeds 500 kPa, install a suitable pressure-limiting valve.

The working temperature range is 1°C to 80°C. Lubricate all concealed O-rings with soapy water or approved plumber's grease before installation to prevent damage and ensure proper sealing.

Do not remove protective covers until final fit-off is complete. This product is manufactured in compliance with AS 3718 and must be installed in accordance with the Plumbing Code of Australia and AS/NZS 3500.

Installation Diagram

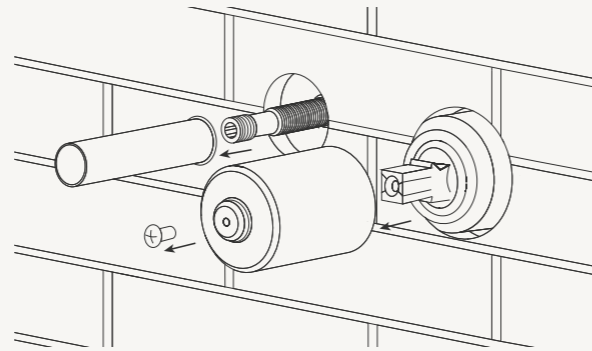


PRE-INSTALLATION

Trim kits and in-wall body kits are packaged separately. Follow the trim kit instructions for installation. The plumber is responsible for waterproofing tap penetrations in wet areas using a flange system or sealant as per AS3740.

Sealant used around wall penetrations must not obstruct removal of protective sleeves (2 & 9) or trim installation. Do not braze directly onto the mixer to avoid heat damage. Thoroughly flush all pipework before installation.

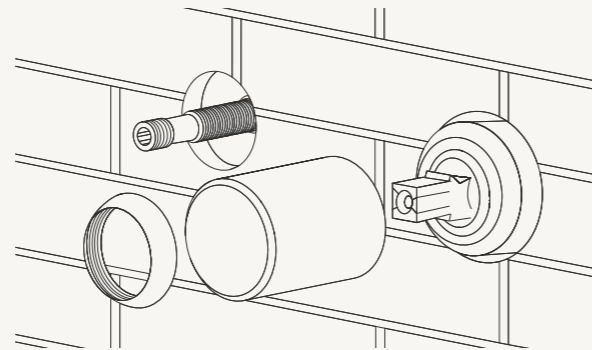
Installation Instructions



1

REMOVE PROTECTIVE HOUSING

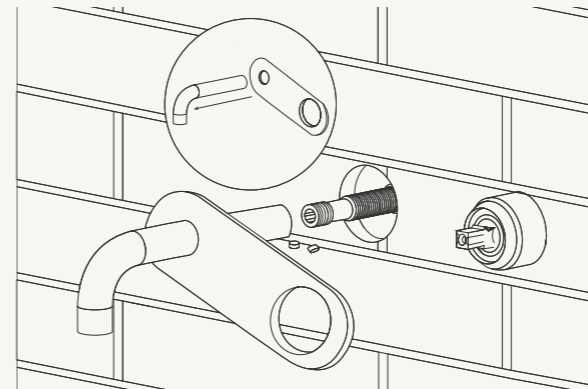
Remove the grub screw and both housings (Ø40mm & Ø13mm) from the internal.



2

PREPARE AND ATTACH HOUSINGS

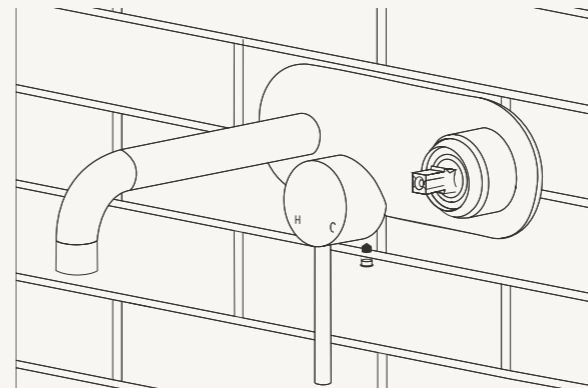
Apply silicone oil inside the body housing and secure the nut to the body.



3

SECURE MIXER COVER PLATE

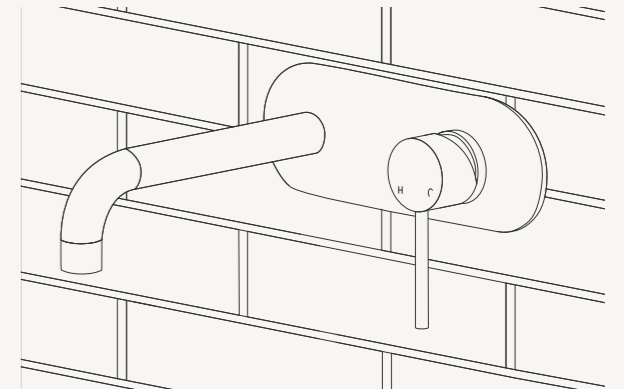
Apply silicone to cover plate O-ring and back of plate. Lock spout onto plate, then to body with grub screws.



4

SECURE SPOUT COVER PLATE

Fit the handle, handle cap, and secure with the grub screw.



5

INSTALL SPOUT AND COVER PLATE

Test the handle to ensure proper operation and water flow.

SHOWERS •

Tap here
Return to index

• • •

ABEY BUILDERS
TAPWARE

Abey Builders Shower

TAP THE PRODUCT TO JUMP TO THE PAGE.



SHOWER HEAD



DUAL SHOWER



MINI DUAL SHOWER



RAIL SHOWER

Dual Shower

[Tap here](#)
Return to index

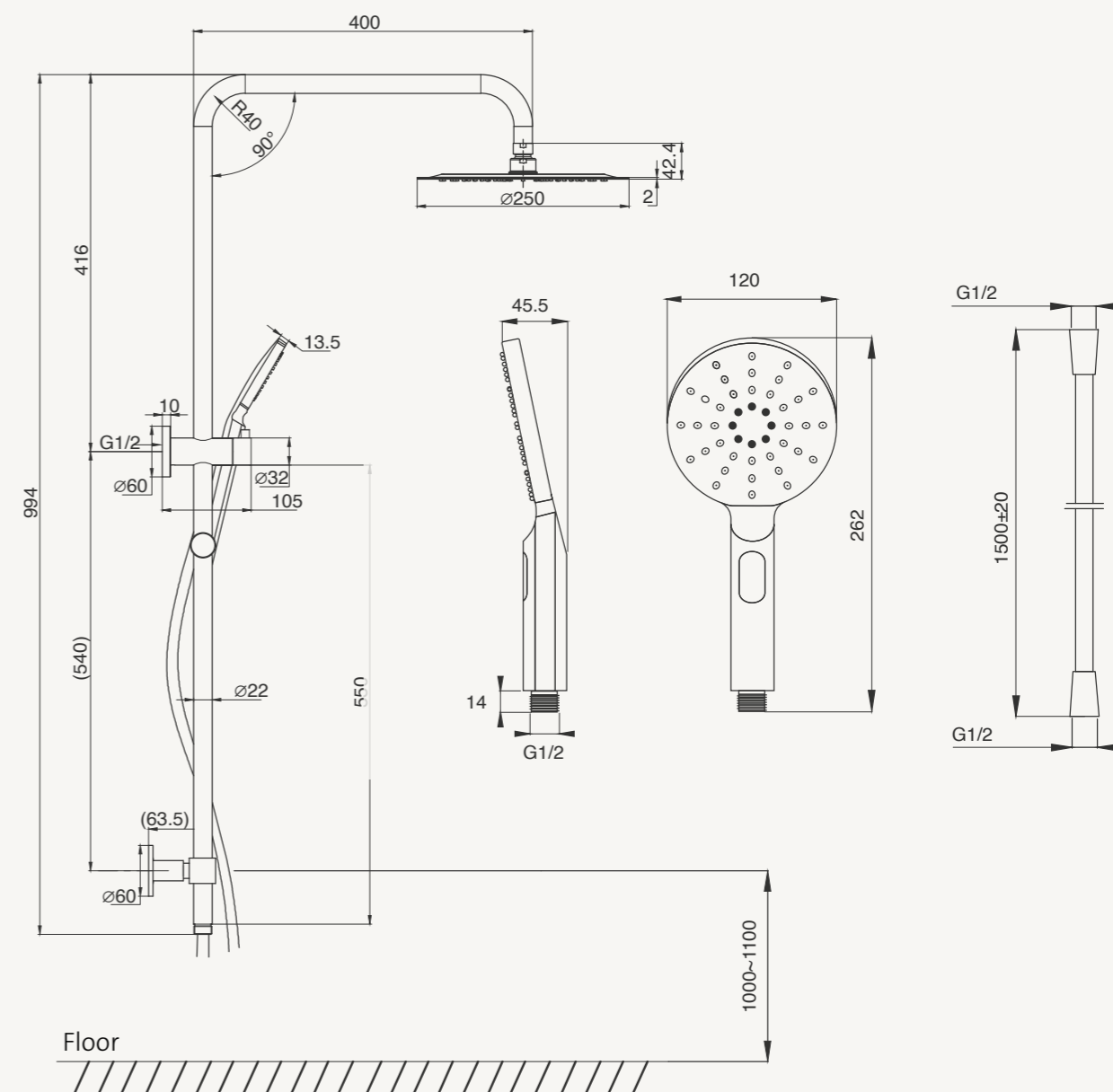


INSTALLATION CONDITIONS

This shower may not be suitable for use with gravity-fed water systems, low and unequal pressure supply networks, instantaneous water heaters, tempering valves, or thermostatic mixing valves, in accordance with AS/NZS 3662 Cl.6c.

The required operating pressure range is min. 150 kPa and max. 750 kPa. All Abey showers must be installed in accordance with the AS/NZS 3500 series and are certified with AS/NZS 3662:2005.

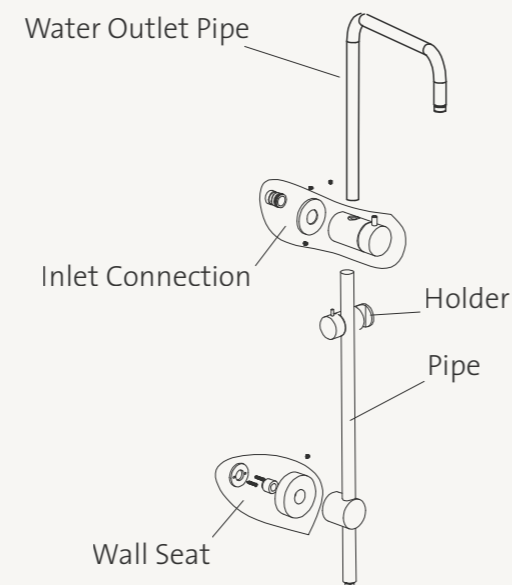
Installation Diagram



PRE-INSTALLATION

All product information is current at time of printing. Abey reserves the right to change product features, packaging or types without notice. Retain installation instructions after installation.

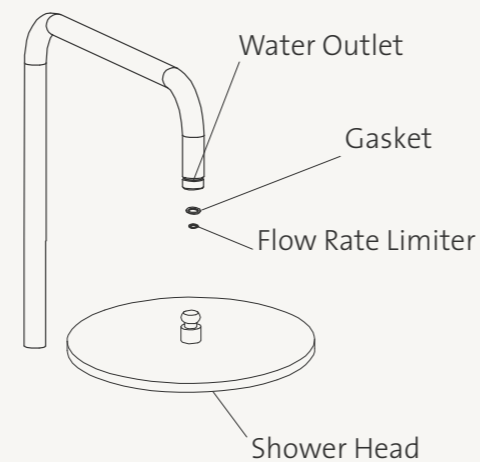
Installation Instructions



1

SHOWER COLUMN INSTALLATION

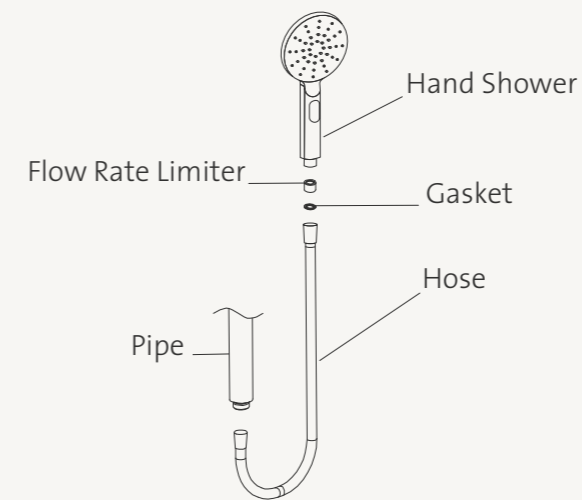
Choose an appropriate wall area for installation, ensuring G1/2 pipes and accessories are pre-installed. Attach the inlet connection and wall seat first. Secure the straight arm to the holder, inlet connection and wall seat using M5 screws. Finally, connect the water outlet pipe to the top.



2

OVERHEAD SHOWER INSTALLATION

Before installation, flush the shower head to clear any debris. The flow rate limiter is pre-installed into the shower head. Insert the gasket into the shower head, then connect it to the water outlet using the threaded fitting.



3

CONNECT SHOWER HEADS

Screw the overhead shower onto the shower arm, ensuring a tight seal. Connect the flexible shower hose to the lower outlet, then attach the hand shower.

4

FINAL CHECK

Ensure all screws are tight and secure. Turn on the water supply and check for leaks or issues with the drainage system.

USAGE INSTRUCTIONS

To use the hand shower, turn the hand wheel until the hand shower mark faces up. Lift the lever to activate water flow. To switch to the overhead shower, rotate the hand wheel until the overhead shower mark is aligned.

Mini Dual Shower

[Tap here](#)

[Return to index](#)

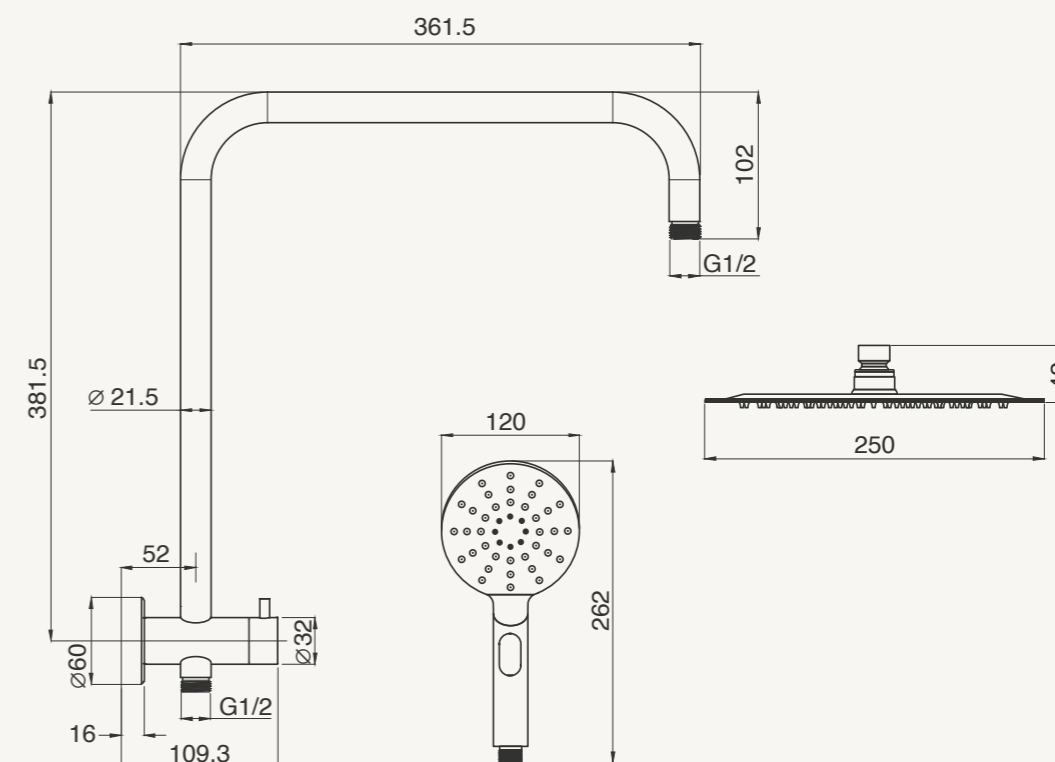


INSTALLATION CONDITIONS

This shower may not be suitable for use with gravity-fed water systems, low and unequal pressure supply networks, instantaneous water heaters, tempering valves, or thermostatic mixing valves, in accordance with AS/NZS 3662 Cl.6c.

The required operating pressure range is min. 150 kPa and max. 750 kPa. All Abey showers must be installed in accordance with the AS/NZS 3500 series and are certified with AS/NZS 3662:2005.

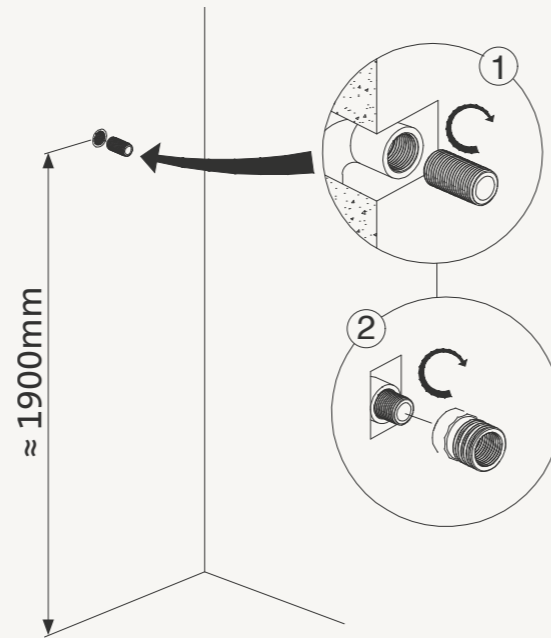
Installation Diagram



PRE-INSTALLATION

All product information is current at time of printing. Abey reserves the right to change product features, packaging or types without notice. Retain installation instructions after installation.

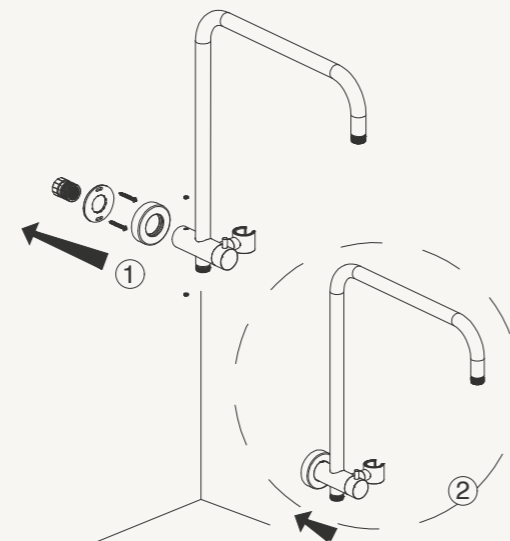
Installation Instructions



1

PREPARE WALL OUTLET

Select a suitable wall area where G1/2 pipes and fittings are pre-installed. Wrap the exposed thread with sealing (Teflon) tape, then screw the threaded connection into the outlet hole.



2

INSTALL SHOWER ARM AND FLANGE

Slide the flange onto the shower arm, then connect the arm to the threaded wall fitting. Use the supplied hex screws to lock it in place. Push the flange flush against the wall.



3

CONNECT SHOWER HEADS

Screw the overhead shower onto the shower arm, ensuring a tight seal. Connect the flexible shower hose to the lower outlet, then attach the hand shower.

4

FINAL CHECK

Ensure all screws are tight and secure. Turn on the water supply and check for leaks or drainage issues.

USAGE INSTRUCTIONS

To use the hand shower, turn the hand wheel until the hand shower mark faces up. Lift the lever to activate water flow. To switch to the overhead shower, rotate the hand wheel until the overhead shower mark is aligned.

Rail Shower

[Tap here](#)

[Return to index](#)

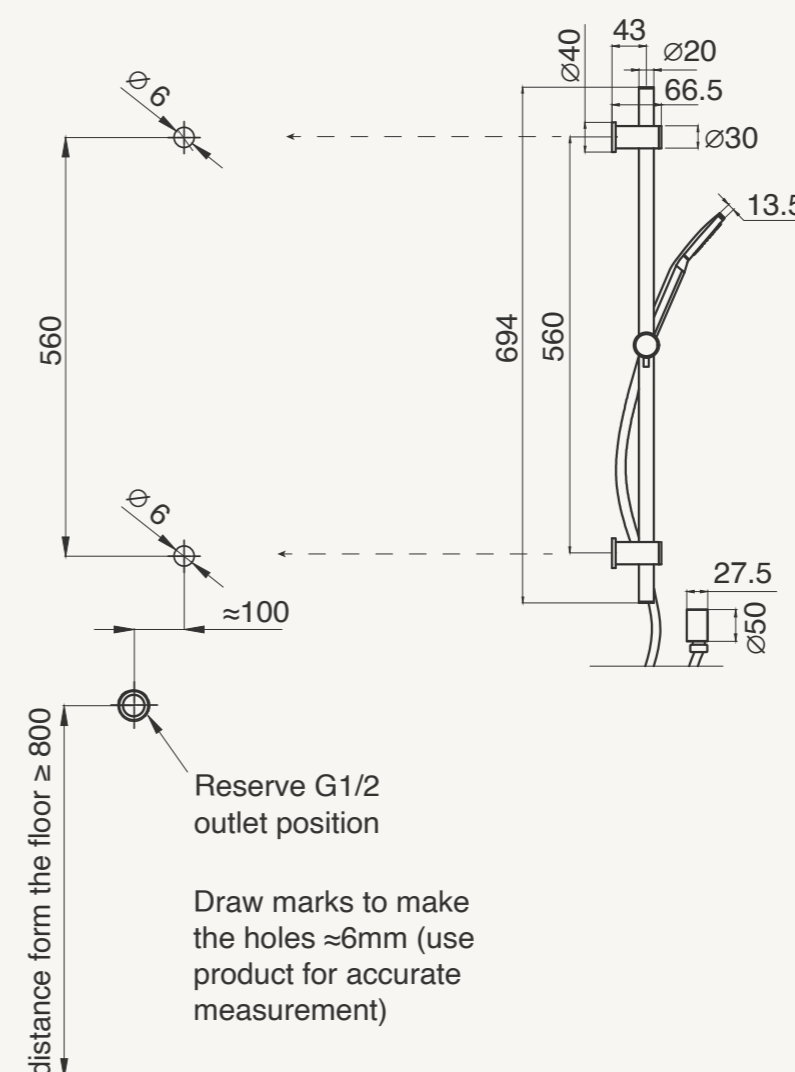


INSTALLATION CONDITIONS

This shower may not be suitable for use with gravity-fed water systems, low and unequal pressure supply networks, instantaneous water heaters, tempering valves, or thermostatic mixing valves, in accordance with AS/NZS 3662 Cl.6c.

The required operating pressure range is min. 150 kPa and max. 750 kPa. All Abey showers must be installed in accordance with the AS/NZS 3500 series and are certified with AS/NZS 3662:2005.

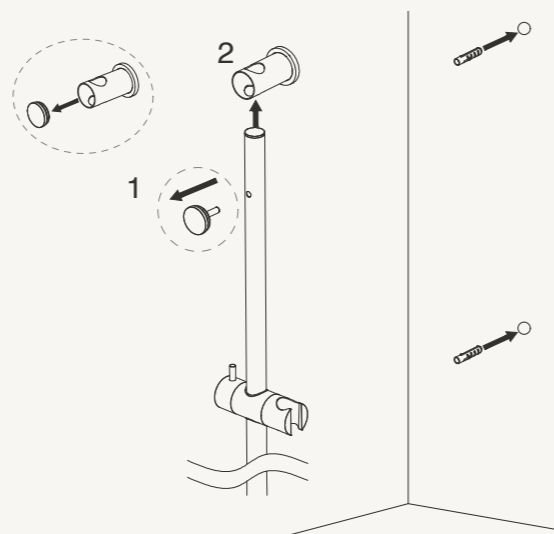
Installation Diagram



PRE-INSTALLATION

All product information is current at time of printing. Abey reserves the right to change product features, packaging or types without notice. Retain installation instructions after installation.

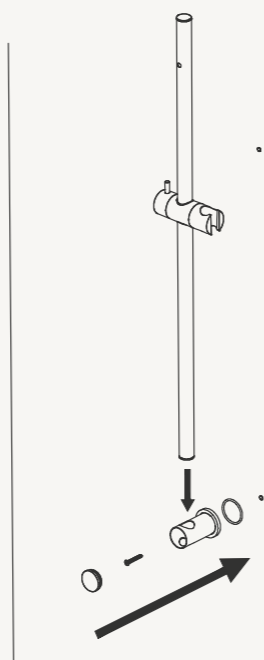
Installation Instructions



1

PREPARE WALL OUTLET

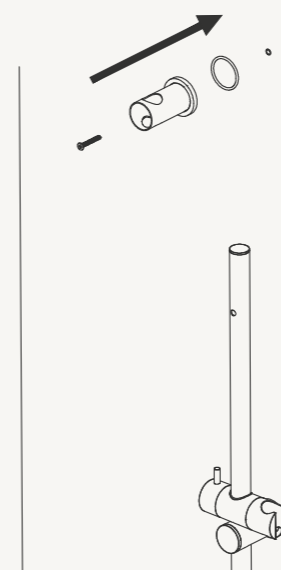
Select a suitable wall area with G1/2 pipes installed. Fix the two screws to the wall and disassemble the product in order.



2

ATTACH FIRST WALL FITTING

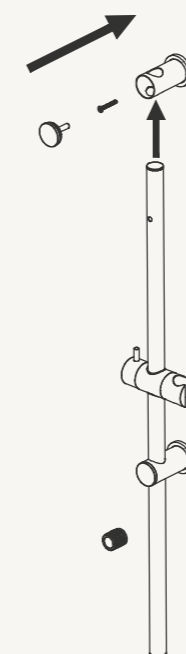
Connect the threaded wall fitting to the wall, then slide the flange onto the rail. (Pending additional info)



3

ATTACH SECOND WALL FITTING

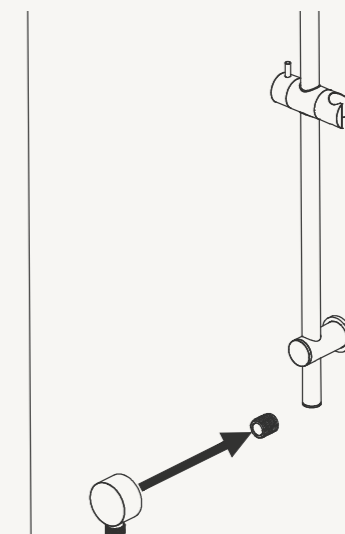
Secure the second wall fitting to the upper outlet.



4

SECURE RAIL

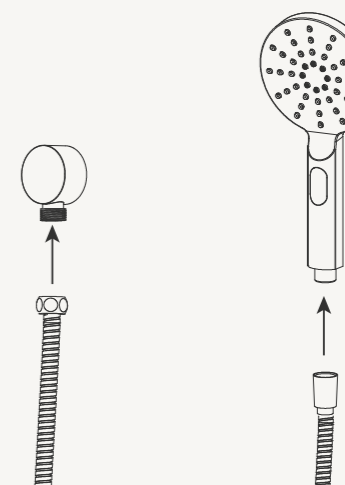
Connect the rail to the upper wall fitting and ensure it is firmly attached.



5

Fit Shower Arm

Attach the cap to the wall outlet.



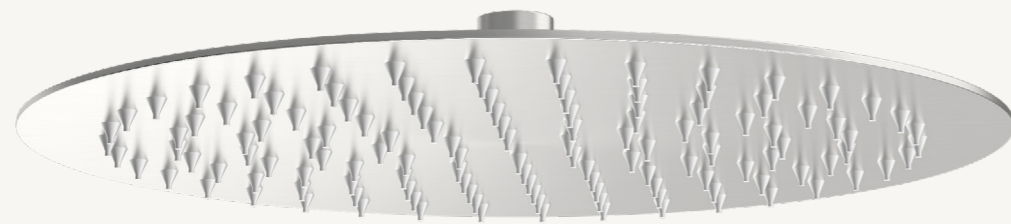
6

INSTALL SHOWERHEAD & CHECK

Connect the shower hose to the cap, attach the hand shower to the hose, tighten all fittings, then turn on water to check for leaks.

Shower Head (1AB-SH)

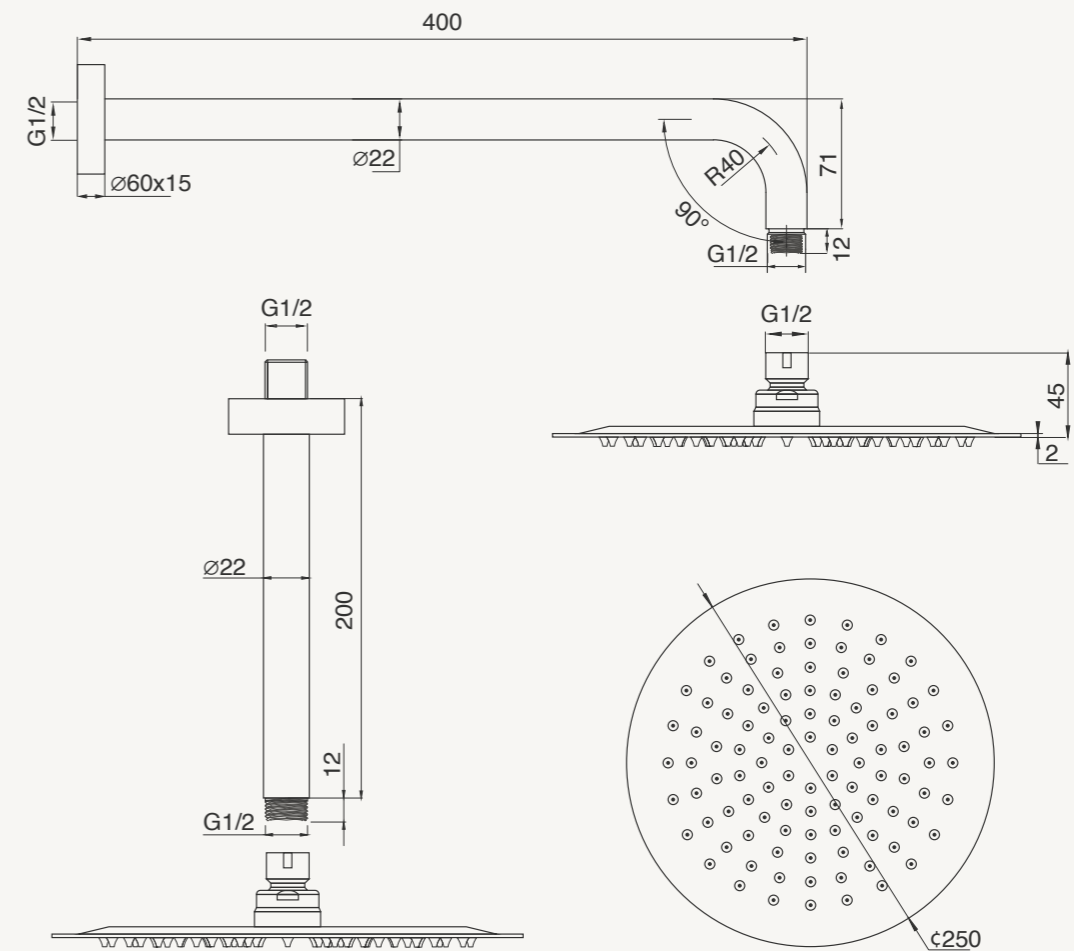
[Tap here](#)
Return to index



INSTALLATION CONDITIONS

The flow controller must be inserted with the protruding side facing into the showerhead to avoid damage (AS/NZS 3662 Cl.6e). Working pressure must range between 150–500 kPa. All installations must comply with the AS/NZS 3500 series. Certified to AS/NZS 3662:2005.

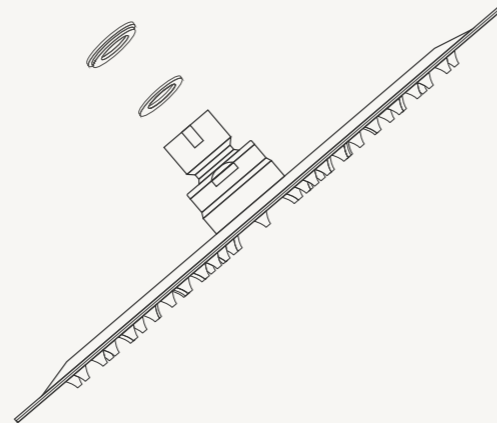
Installation Diagram



PRE-INSTALLATION

These showers are not suitable for gravity-fed systems, unequal pressure supply networks, instantaneous water heaters, tempering valves, or thermostatic mixing valves (AS/NZS 3662 Cl.6c). The shower must include a check valve for compatibility. Ensure all pipework is flushed before installation to remove debris or impurities.

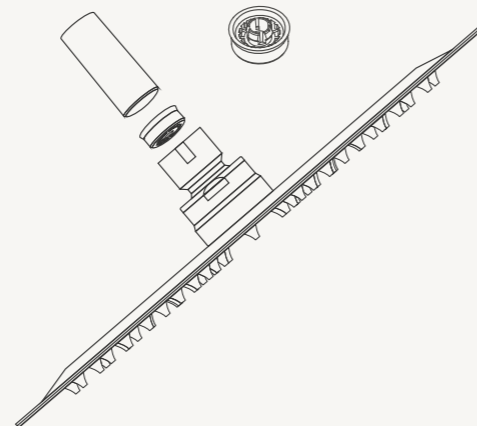
Installation Instructions



1

FLUSH & SECURE

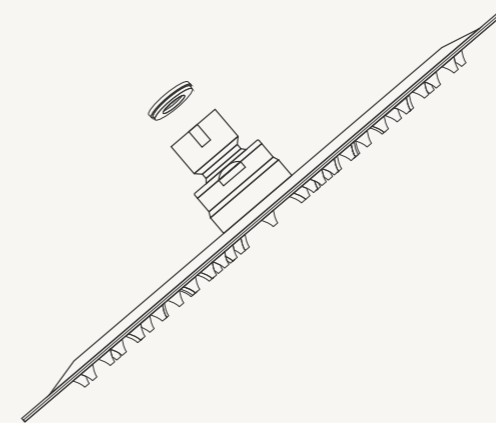
Apply thread tape or other approved sealant to the ceiling/wall spigot/nipple. Insert the wall plate over the arm/dropper, then install the arm/dropper onto the spigot, ensuring it is tight and flush with the wall/ceiling and the arm outlet is perpendicular/vertical.



2

INSERT FLOW CONTROLLER

Fit the filter/washer and flow controller into the shower head at the connection between the shower head and the arm/dropper.



3

ATTATCH SHOWER HEAD

Ensure the flow controller is inserted with the protruding side into the shower head, taking care not to damage it.

4

FINAL CHECK

Fit the shower head onto the arm/dropper, firmly tighten to prevent leaks. Adjust the shower head by swiveling it into the desired position.

INTERNALS[•]

Tap here
Return to index

• • •

ABEY BUILDERS
TAPWARE

Abey Builders internals

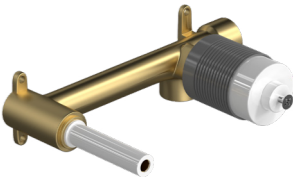
TAP THE PRODUCT TO JUMP TO THE PAGE.



SHOWER MIXER
DIVERTER INTERNAL



SHOWER MIXER
INTERNAL

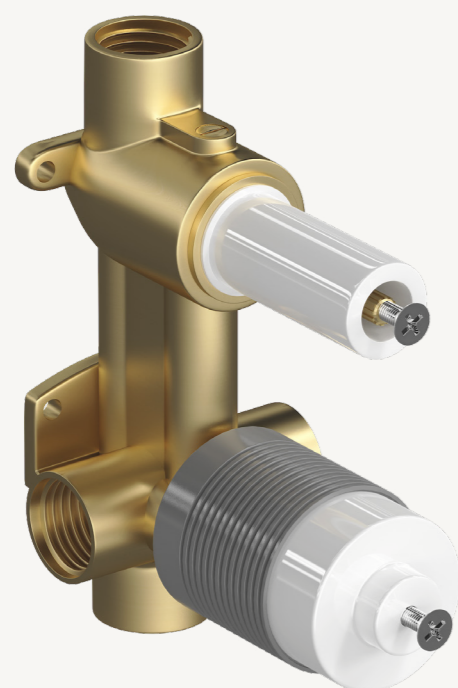


WALL SET INTERNAL

Shower Mixer Diverter Internal

[Tap here](#)

[Return to index](#)

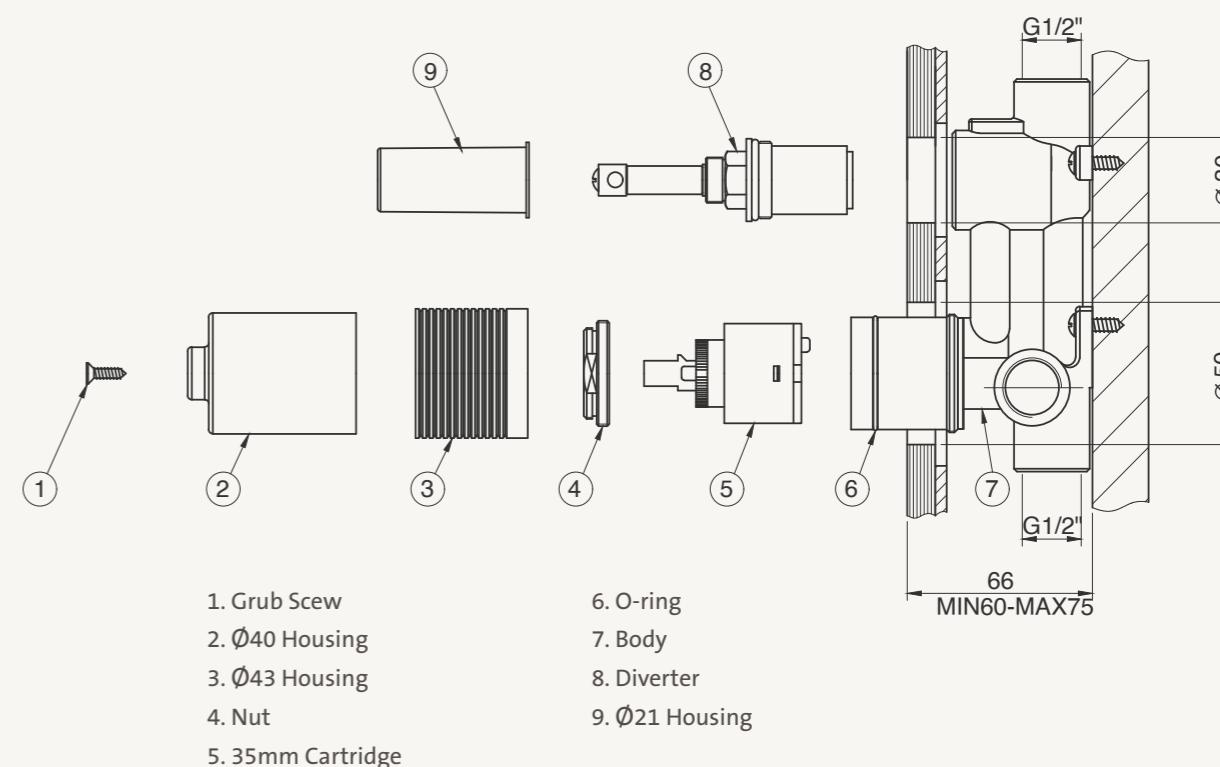


INSTALLATION CONDITIONS

Ensure the hot and cold water inlet pressures are balanced. The recommended operating pressure for this product is between 150–500 kPa. If water pressure exceeds 500 kPa, a pressure-limiting valve must be installed, as excessive pressure may damage the tap and void the warranty.

The working temperature range is between 1°C and 80°C. This tap is manufactured to comply with AS 3718 and must be installed in accordance with the Plumbing code of Australia as well as AS/NZS 3500.

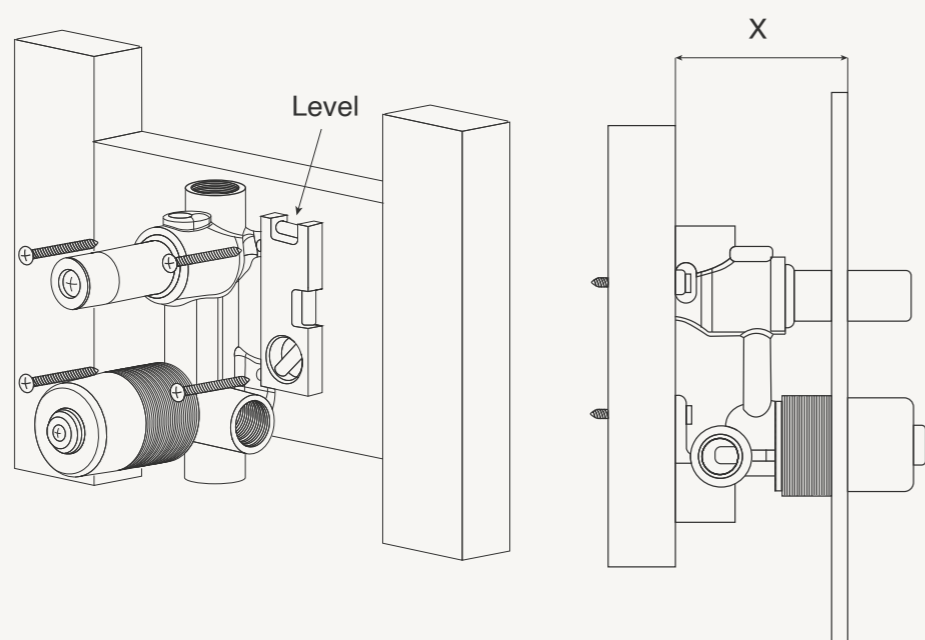
Installation Diagram



PRE-INSTALLATION

Trim kits and in-wall body kits are packaged separately. Follow the trim kit instructions for installation. The plumber is responsible for waterproofing tap penetrations in wet areas using a flange system or sealant as per AS3740. Sealant used around wall penetrations must not obstruct removal of protective sleeves (2 & 9) or trim installation. Do not braze directly onto the mixer to avoid heat damage. Thoroughly flush all pipework before installation.

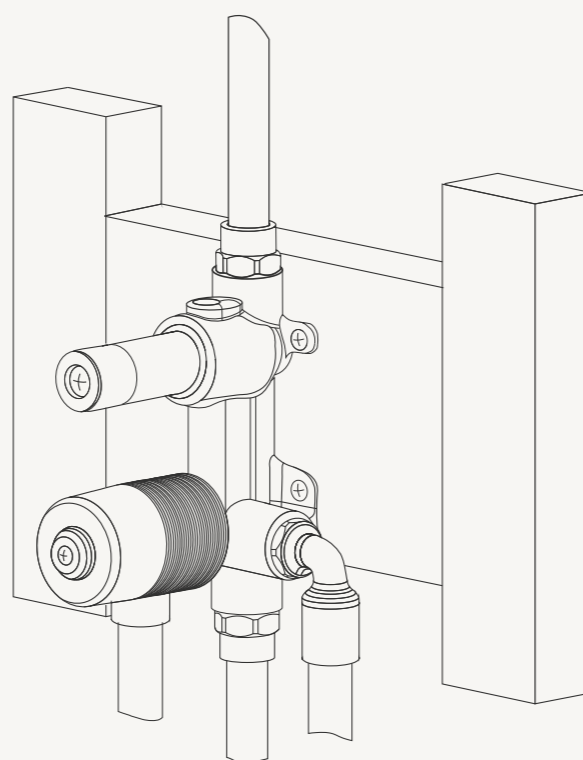
Installation Instructions



1

SECURE MIXER BODY

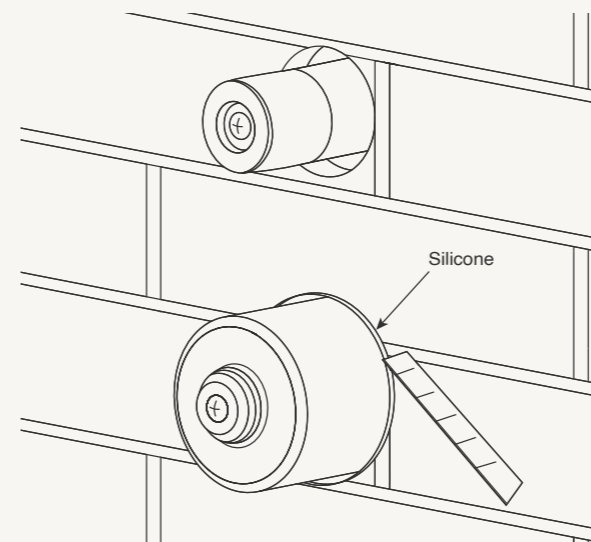
Mount the diverter body into the wall using screws, ensuring it sits level. Maintain a wall-to-tile face depth of 60–75mm.



2

CONNECT WATER SUPPLY

Attach the hot, cold, and outlet pipes according to the markings on the body. Conduct a pressure test to confirm there are no leaks before continuing.



3

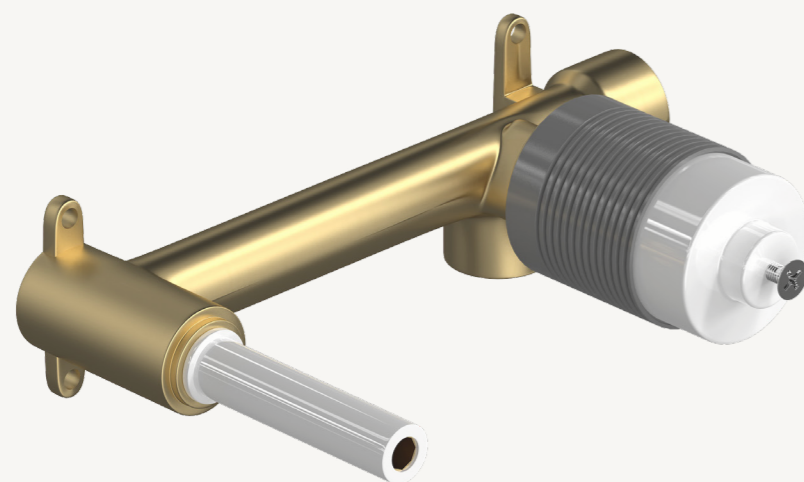
SEAL AND PREPARE FOR TRIM

Apply a continuous bead of silicone around the edge of the mixer. Trim away the exposed plastic sleeves carefully, without damaging internal components.

Wall Set Internal

[Tap here](#)

[Return to index](#)



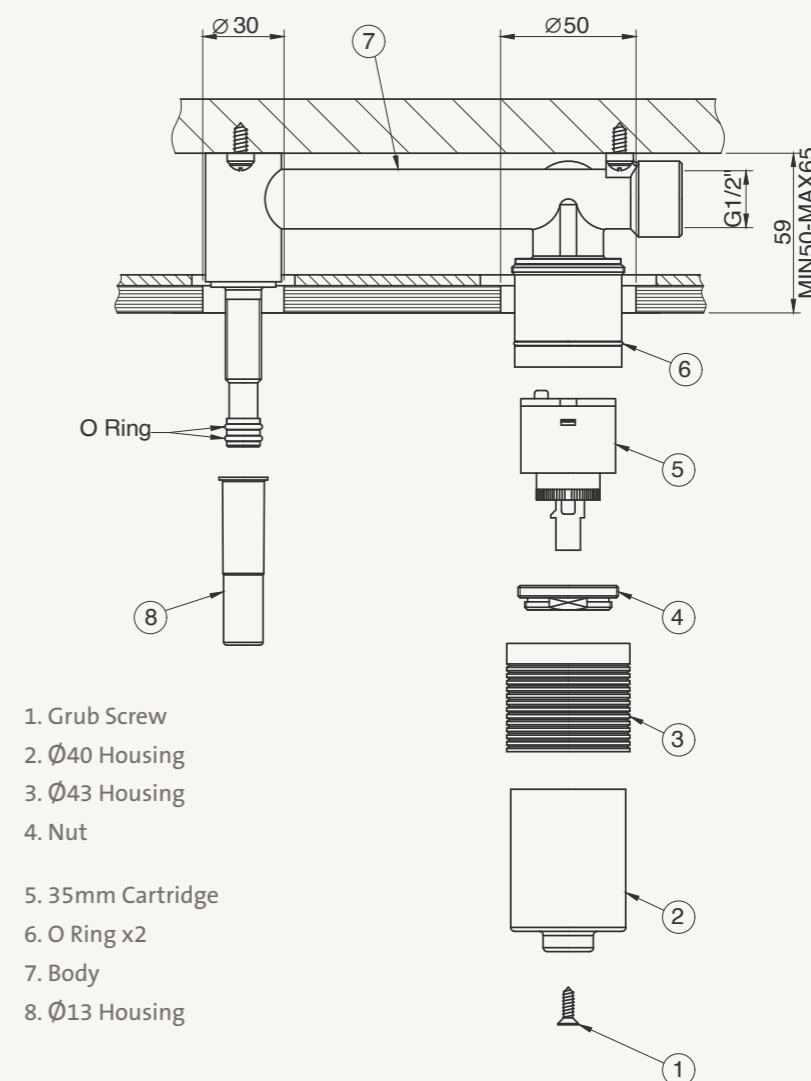
INSTALLATION CONDITIONS

Ensure the hot and cold-water inlet pressures are balanced.

The recommended operating pressure for this product is between 150–500 kPa. If water pressure exceeds 500 kPa, a pressure-limiting valve must be installed, as excessive pressure may damage the tap and void the warranty.

The working temperature range is between 1°C and 80°C. This tap is manufactured to comply with AS 3718 and must be installed in accordance with the Plumbing code of Australia as well as AS/NZS 3500.

Installation Diagram

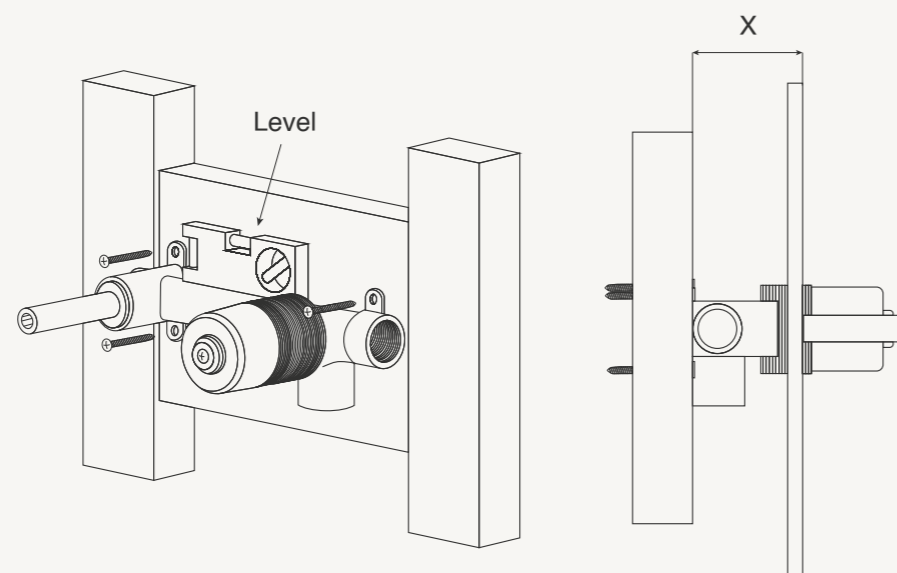


PRE-INSTALLATION

In-wall body and trim kits are packaged separately. Follow the trim kit instructions for installation. Brazed connections must not be made directly onto the mixer to prevent damage.

All pipework must be thoroughly flushed before installation. Sealant or waterproofing materials should not interfere with the removal of protective sleeves (2 & 8) or trim installation.

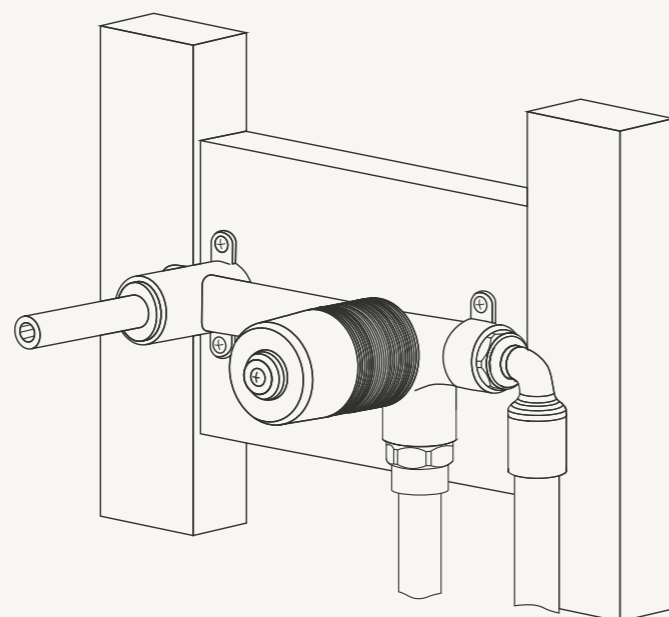
Installation Instructions



1

SECURE MIXER BODY

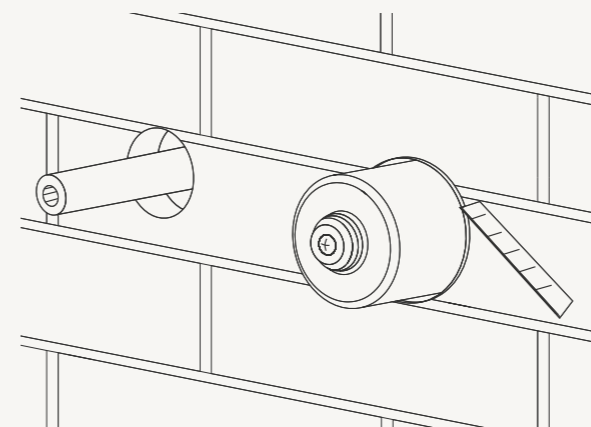
Fix the body on the wall with screws ensuring it is level. The distance is 50-65mm from the wall to the tile surface.



2

CONNECT WATER SUPPLY

Attach the hot and cold water pipes to the correct inlets and outlets as marked on the unit. Conduct a standard water pressure test and check for leaks before proceeding.



3

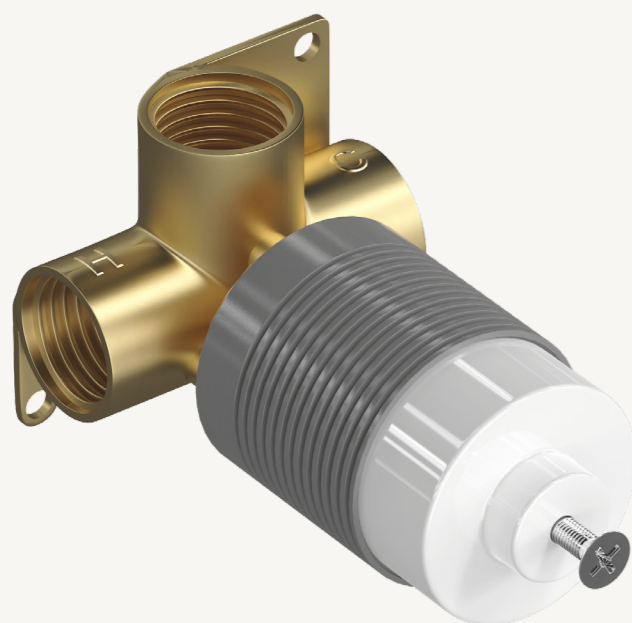
SEAL AND PREPARE FOR TRIM

Apply a full bead of silicone around the mixer. Carefully trim away any excess plastic sleeve protruding from the wall to allow for proper trim installation.

Shower Mixer Internal

[Tap here](#)

[Return to index](#)



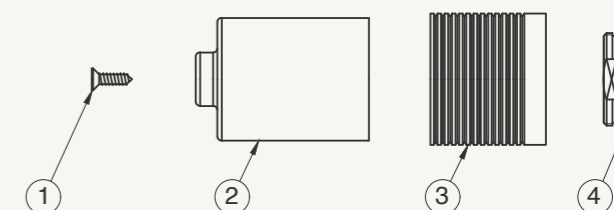
INSTALLATION CONDITIONS

Ensure the hot and cold water inlet pressures are balanced. The recommended operating pressure for this product is between 150–500 kPa. If water pressure exceeds 500 kPa, a pressure-limiting valve must be installed, as excessive pressure may damage the tap and void the warranty.

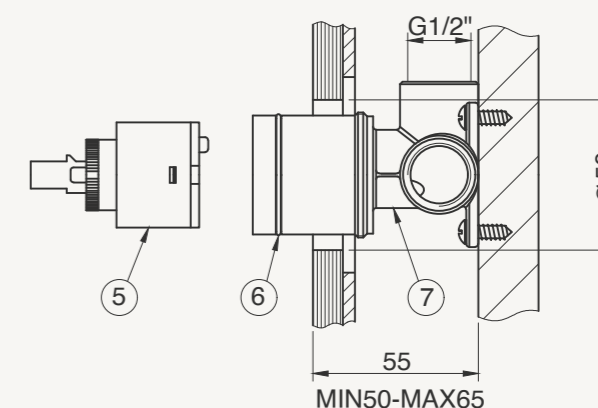
The working temperature range is between 1°C and 80°C. This tap is manufactured to comply with AS 3718 and must be installed in accordance with the Plumbing code of Australia as well as AS/NZS 3500.

Installation Diagram

1. Grub Screw
2. Ø40 Housing
3. Ø43 Housing
4. Nut



5. 35mm Cartridge
6. O Ring
7. Body

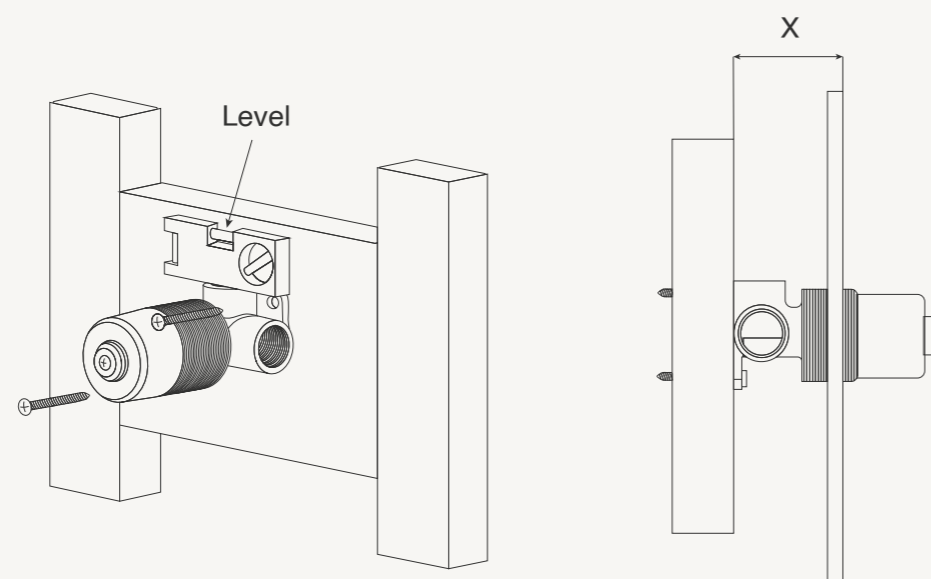


PRE-INSTALLATION

In-wall body and trim kits are packaged separately. Follow the trim kit instructions for installation. Brazed connections must not be made directly onto the mixer to prevent damage.

All pipework must be thoroughly flushed before installation. Sealant or waterproofing materials should not interfere with the removal of protective sleeve (2) or trim installation.

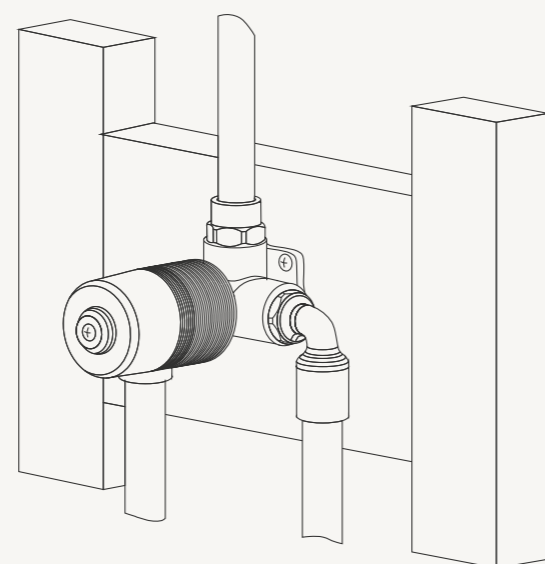
Installation Instructions



1

SECURE MIXER BODY

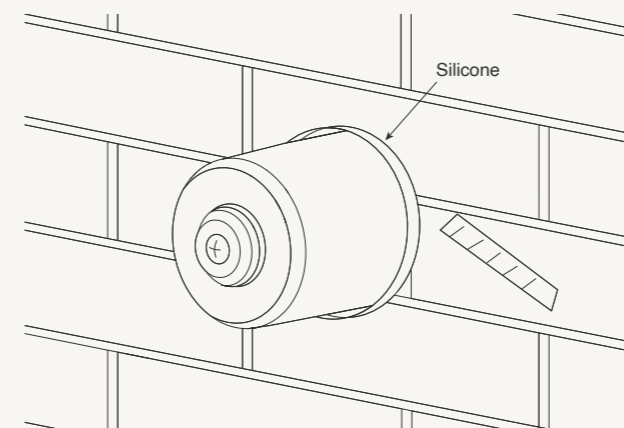
Secure the mixer body to the wall with screws, ensuring it is level. Maintain a depth of 50–65mm from the wall to the tile surface.



2

CONNECT WATER SUPPLY

Attach the inlet and outlet pipes following the function markings. Conduct a standard pressure test and check for leaks before continuing.



3

SEAL AND PREPARE FOR TRIM

Apply a continuous bead of silicone around the mixer. Carefully trim back the exposed plastic sleeve flush with the wall surface.

KITCHEN MIXER & ACCESSORIES

Tap here
Return to index



ABEY BUILDERS
TAPWARE

KITCHEN MIXER & ACCESSORIES

TAP THE PRODUCT TO JUMP TO THE PAGE.



ACCESSORIES



KITCHEN MIXER



PULLOUT KITCHEN MIXER

Kitchen Mixer

[Tap here](#)

[Return to index](#)

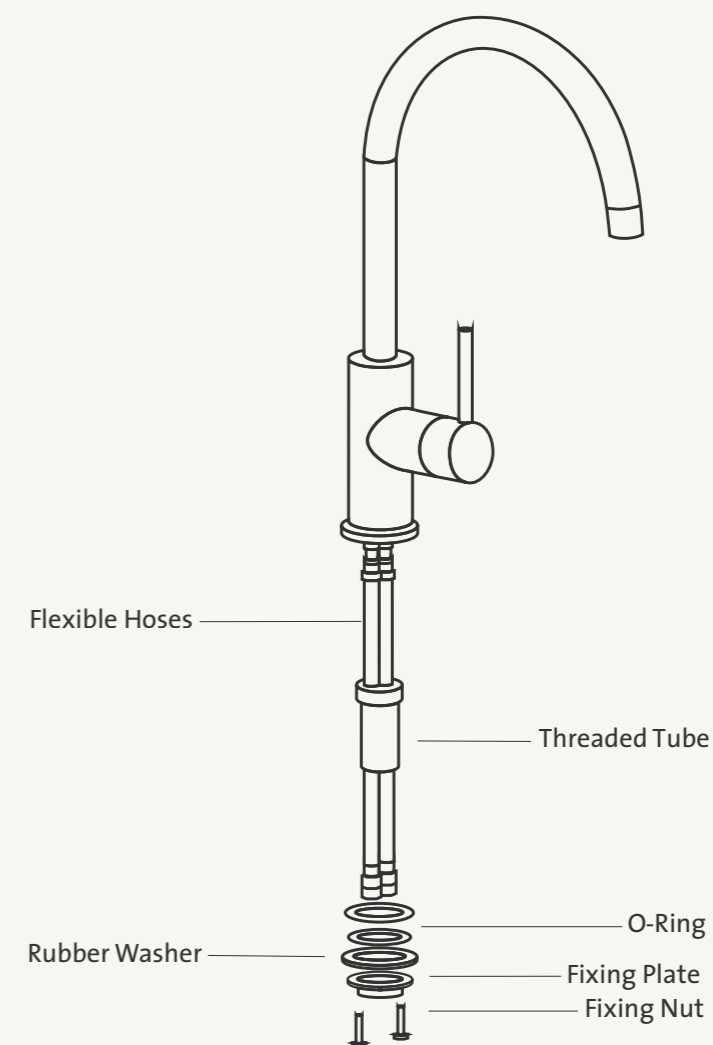


INSTALLATION GUIDE

Ensure the hot and cold-water inlet pressures are balanced. The recommended operating pressure for this product is between 150–500 kPa. If water pressure exceeds 500 kPa, a pressure-limiting valve must be installed, as excessive pressure may damage the tap and void the warranty.

The working temperature range is between 1°C and 80°C. This tap is manufactured to comply with AS 3718 and must be installed in accordance with the Plumbing code of Australia as well as AS/NZS 3500.

Installation Diagram



PRE-INSTALLATION

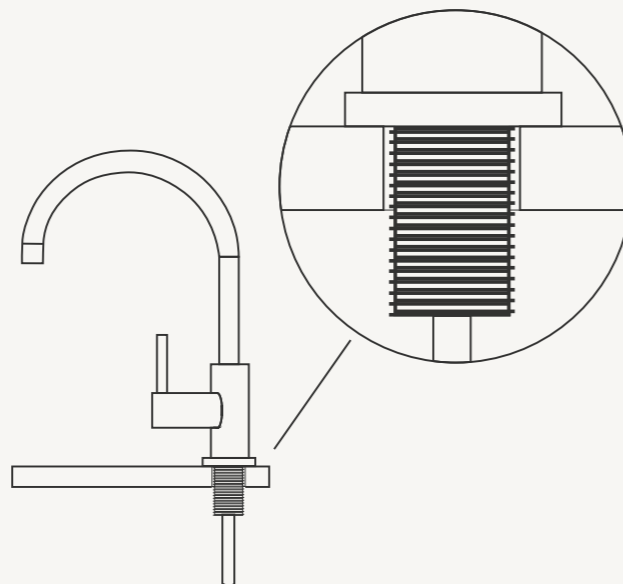
All product information is current at the time of printing, but Abey reserves the right to change product features, packaging, or types without notice; installation instructions should be retained after installation. Additionally, all pipework must be thoroughly flushed prior to installation to prevent blockage from foreign materials, and the aerator insert housing must be retightened to prevent removal by hand.

Installation Instructions

1

PREPARE THE MIXER

Attach the O-ring, flexible hoses, and threaded rod to the underside of the mixer body. Ensure the O-ring sits flat, hoses are firmly secured, and the threaded rod is fully tightened.



2

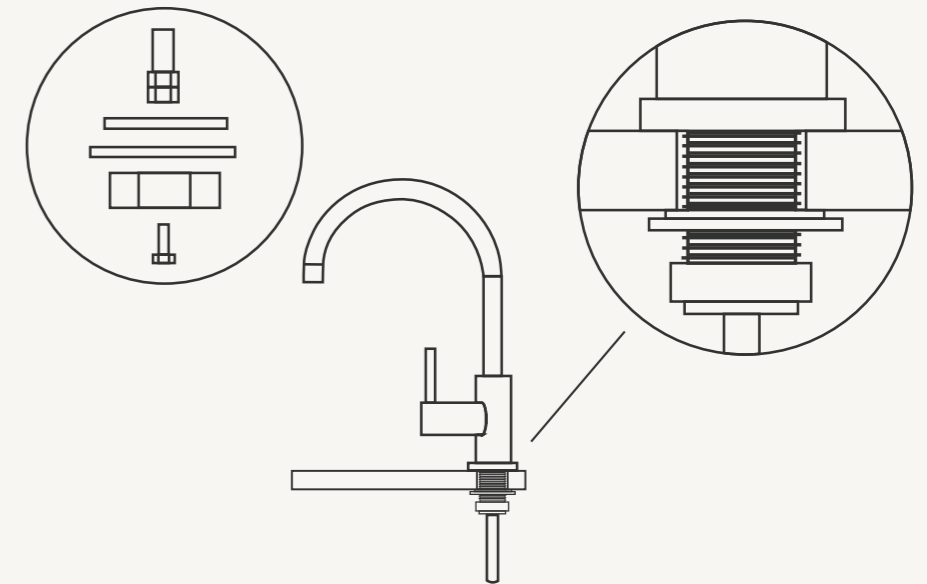
POSITION THE MIXER

Insert the flexible hoses and threaded rod through the mounting hole on the benchtop or basin. Align the mixer so it sits centered and flat on the surface.

3

SECURE THE MIXER

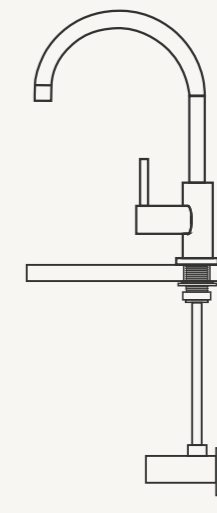
Slide the rubber washer up the hoses until it sits firmly against the underside of the mounting surface. Follow with the metal fixing plate and fixing nut. Tighten the nut securely by hand, then use a tool if required. If screws are provided, tighten them for added stability.



4

CONNECT WATER SUPPLY

Attach the flexible hoses to the isolation stop valves. While tightening, ensure the hoses remain securely fixed to the mixer body. Once connected, turn on the water and test for leaks and correct mixer operation.



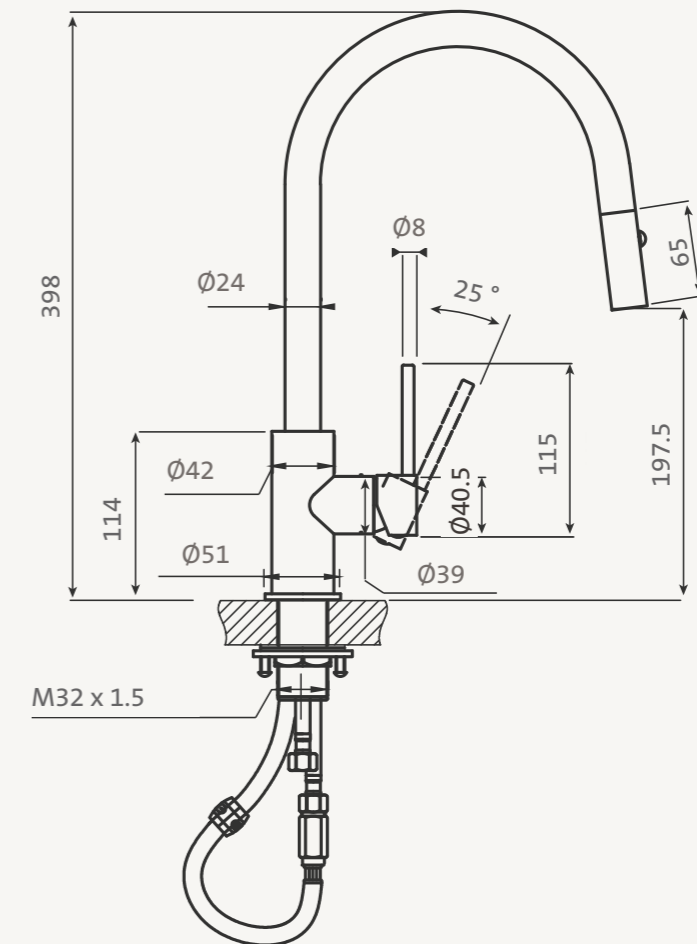
Pullout Kitchen Mixer

[Tap here](#)
Return to index



INSTALLATION GUIDE

Ensure the hot and cold-water inlet pressures are balanced. The recommended operating pressure for this product is between 150–500 kPa. If water pressure exceeds 500 kPa, a pressure-limiting valve must be installed, as excessive pressure may damage the tap and void the warranty. The working temperature range is between 1°C and 80°C. This tap is manufactured to comply with AS 3718 and must be installed in accordance with the Plumbing code of Australia as well as AS/NZS 3500.



PRE-INSTALLATION

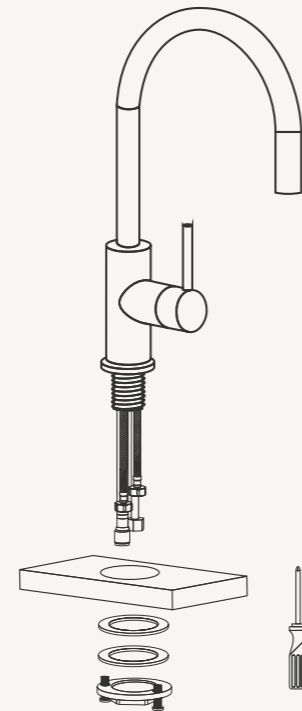
All product information is current at the time of printing, but Abey reserves the right to change product features, packaging, or types without notice; installation instructions should be retained after installation. Additionally, all pipework must be thoroughly flushed prior to installation to prevent blockage from foreign materials, and the aerator insert housing must be retightened to prevent removal by hand.

Installation Instructions

1

SECURE THE MIXER

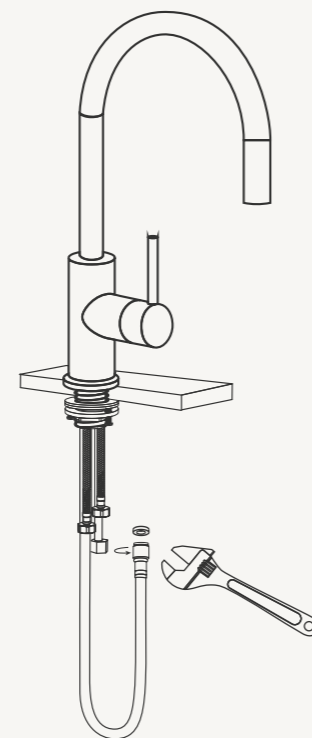
Position the mixer on the sink or bench. From underneath, slide the metal washer and fixing nut onto the threaded rod. Tighten securely to hold the mixer in place.



2

CONNECT THE PULL-OUT HOSE

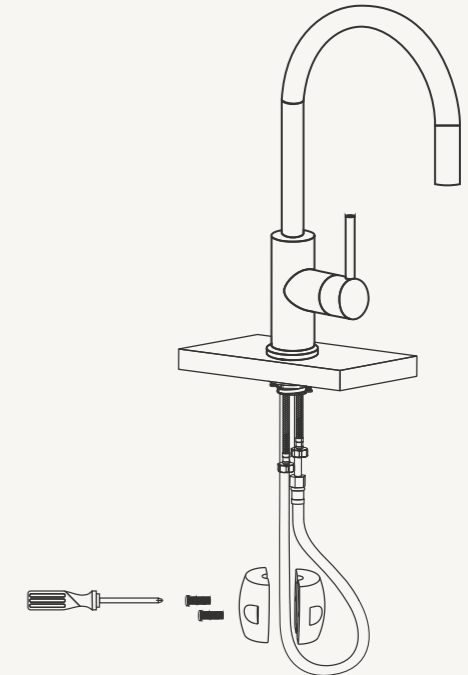
Attach the pull-out hose to the mixer's water outlet, ensuring the rubber seal is correctly fitted. Tighten the connection firmly.



3

FIT THE GRAVITY WEIGHT

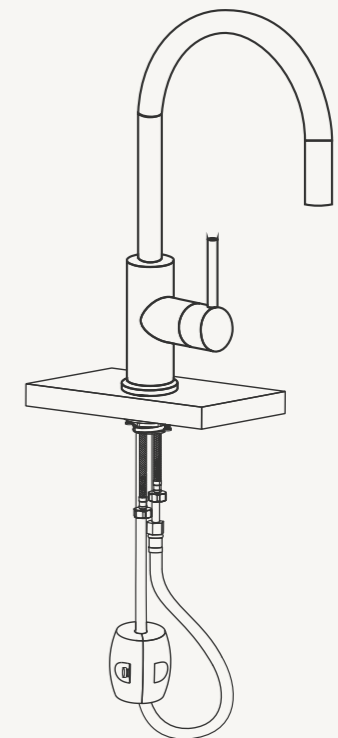
Clip the gravity weight onto the pull-out hose, leaving it loose for now to allow final adjustment after testing.



4

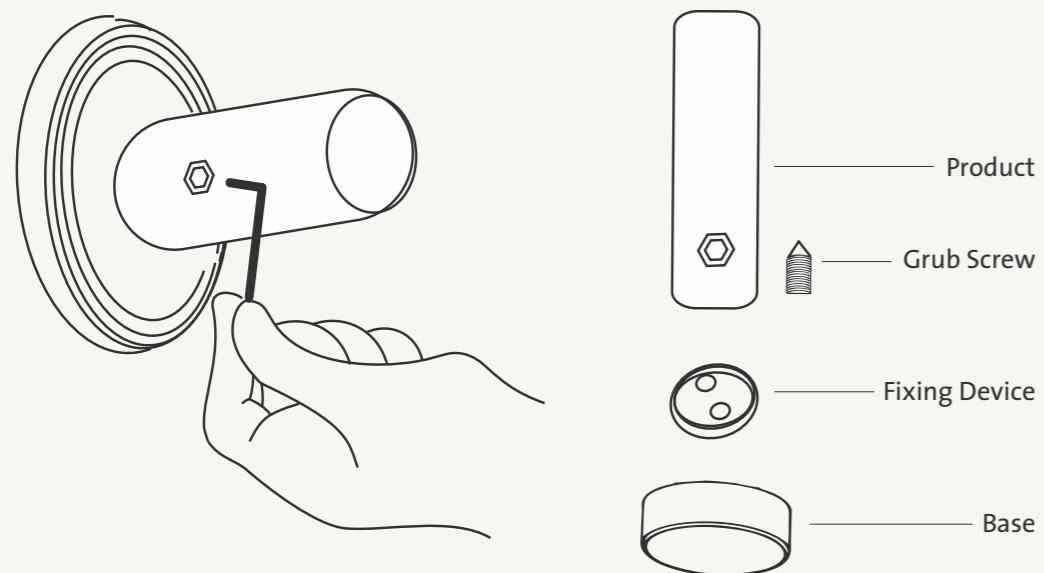
CONNECT WATER SUPPLY

Attach the hot and cold inlet hoses to the corresponding water supply points. Turn on the water and check for leaks. Test the function and flow of the mixer.



Abey Builder Accessories

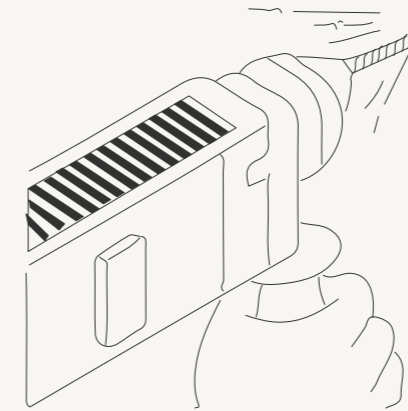
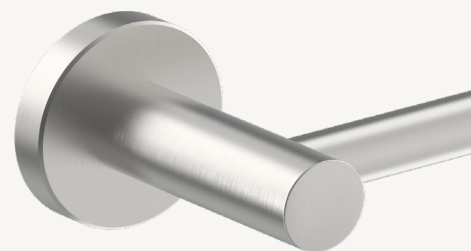
[Tap here](#)
Return to index



PRE-INSTALLATION

All product information is current at time of printing. Abey reserves the right to change product features, packaging, or types without notice. Retain installation instructions after installation.

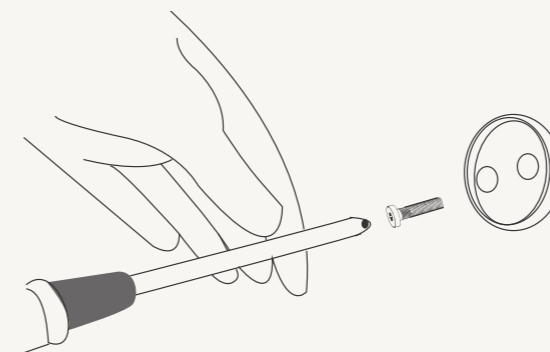
Using the supplied Allen key, loosen and remove the grub screw located underneath the accessory. Once removed, the accessory will separate into four components, as shown in the diagram.



1

Mark & Drill

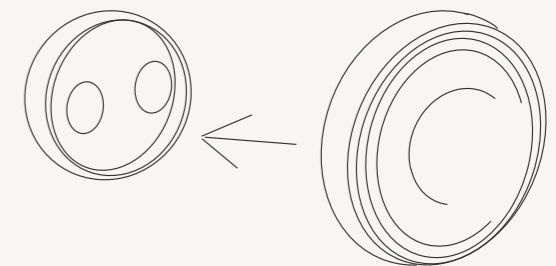
Mark the central point, then drill holes using an impact drill, ensuring alignment with the mounting plate.



2

Insert Plugs

Insert the provided expansion plugs into the drilled holes and gently hammer them into place.



3

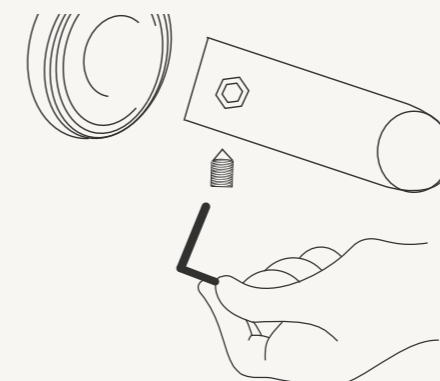
Secure Fixing Block

Position the fixing block cover over the drilled holes and secure it firmly.

4

Attach Base

Position the base of the accessory over the mounted block.



5

Tighten Check

Use the Allen key to tighten the grub screw. Confirm the accessory is firmly secured to the wall.

Abey Warranty

Product Quality Guarantee.
We stand behind the quality of our products.



We always listen to all our clients
and always endeavour to be
helpful

IT IS THE INSTALLER/CONSUMERS RESPONSIBILITY

Installation of any Kitchen or Bathroom Tapware and Shower Product is the responsibility of the customer or the customer's installer.

ALWAYS check the Product for blemishes or imperfections before installation. The cost of delivering and installing a replacement will be the responsibility of the customer.

ALWAYS check to ensure the product has all of its components prior to installation.

By installing the Tapware or Shower, the owner accepts that the product is free of blemishes or imperfections including scratches, dents, spotting, discolouration and rust.

THE KITCHEN & BATHROOM TAPWARE AND SHOWER WARRANTY WILL BE VOID IF,

1. The customer cannot provide proof of purchase or equivalent documentation.

2. The product is not installed by a licensed plumber.
3. The product is not installed according to relevant National Standards and State Regulations, Abey's installation instructions, information or advice provided by Abey.
4. Water pressures and or temperatures that exceed limitations as per the product installation instructions.
NOTE: AS/NXZS3500.1-2003 (Clause 3.3.4) specifies 500kPa maximum water supply pressure at any outlet within a building for new installations.
5. Damage as a result of obstructions due to inadequate flushing of all water supply lines before use and problems caused by water supply (including excess water pressure, silt or corrosion).
6. Isolation stop taps are not fitted as stated on manufacturer's installation instructions.
7. Non-installation of flow regulators in Tapware and Showers or regulated check valves in hand showers or pull-out mixers.

THANK YOU



P: 1800 809 143
www.abey.com.au

Visit an Abey Showroom
to explore the possibilities.

BNE | MEL | PER | SYD

August 2025

