

Working Specifications

Maximum: Temperature - 80°C  
Pressure - 500kpa

Where normal working pressures exceed the maximum stated above, pressure limiting valve should be installed as excessive pressure may damage the tap and void warranty.

Minimum: Temperature - 1°C  
Pressure - 150kpa

Recommended operating pressure: 150 to 500kpa.

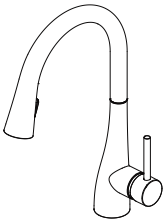
**NOTE: This mixer must be installed with isolating stop taps in accordance with local authority installation codes. All Abey mixers must be installed by a licensed plumber, failure to do so may void warranty.**  
**All Abey tapware must be installed in accordance with AS/NZS 3500 series.**

Care and Maintenance

The materials and workmanship of this Tapware is of high quality and in order to maintain its appearance it is important not to wipe with abrasive cleaners. Cleaning of this product should only be done with warm soapy water on a regular basis.

Kitchen Mixer

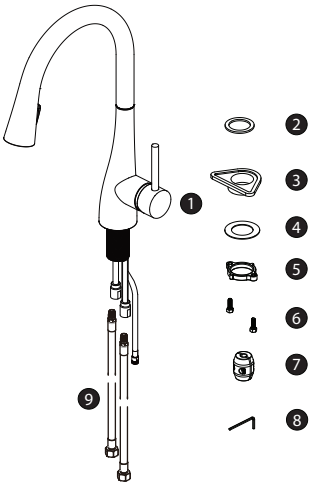
Item number: 5K2



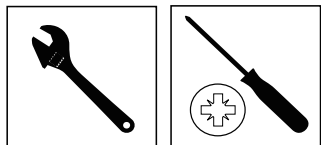
Pack Contents

No.	Description	Qty
1	Body	1
2	Rubber washer	1
3	Mounting seat	1
4	Metal washer	1
5	Nut	1
6	Screw	2
7	Weight	1
8	Hex key	1
9	Flexible hose	1

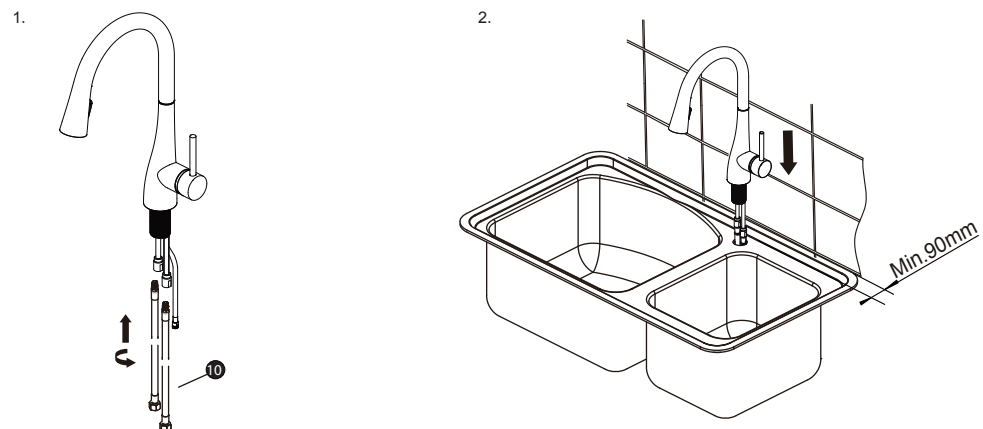
Photo of Pack Contents



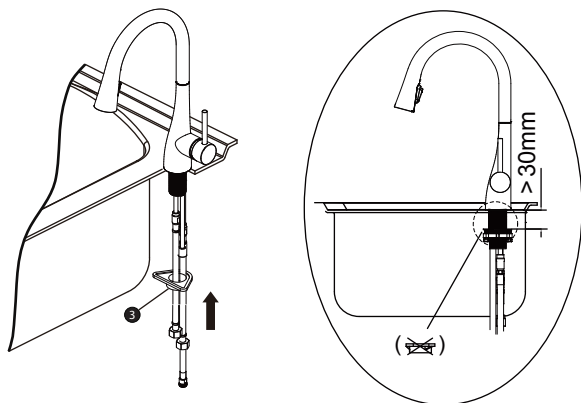
## Suggested Install Tool(Not supplied)



## Installation Steps



3. Please check sink thickness before installing.  
No (3) Mounting seat is needed if the thickness is more than 30mm.



## Installation steps

