

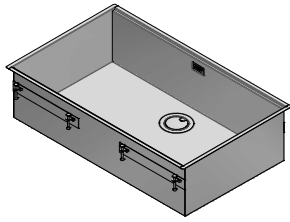
1QA841

DESCRIZIONE Vasca Quadra Flexi R0 incasso e filo 80x46 con abbassamento
DESCRIPTION 80x46 cm built-in and flush square bowl Flexi with radius "0" with lowering

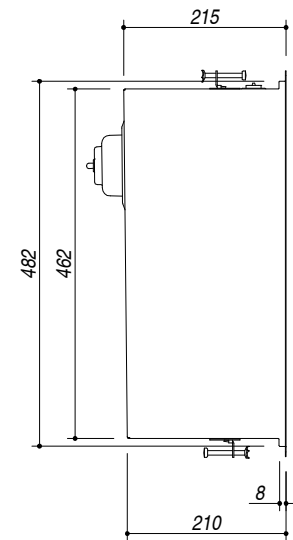
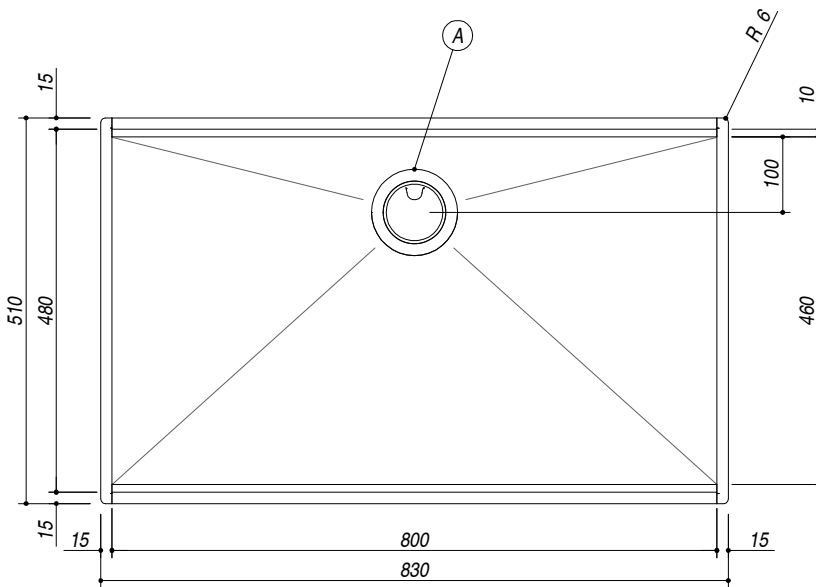
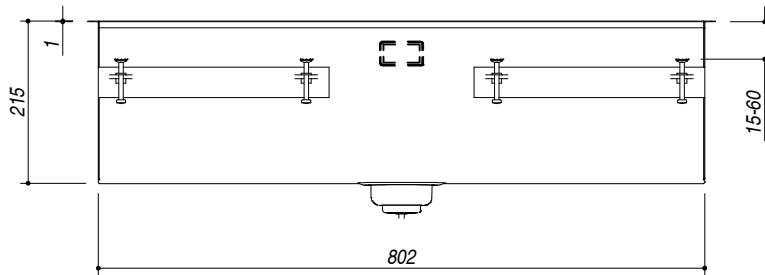
PESO LORDO 9,5 kg
GROSS WEIGHT

DIMENSIONI IMBALLO 950x600x300 mm
PACKAGING DIMENSIONS

1QA841 Acciaio inox St. Steel
 1QA841V Acciaio inox Vintage Vintage St. Steel



- Vasca Raggio "0" (Bowl with radius "0")
- Acciaio Inox AISI 304 di spessore elevato (AISI 304 Extra thick stainless steel)
- Dimensione vasca: 80x46x21.5 h (Bowl dimension: 80x46x21.5 h)
- Vasca con abbassamento per scorrimento accessori (bowl with lowering for sliding of accessories)
- Dotazioni: pilettone 3"1/2, copripilettone in acciaio inox, troppopieno con scarico perimetrale (Equipment: 3"1/2 basket strainer waste, stainless steel drain cover, perimeter overflow) (A)
- Base inserimento vasca: 90 (Base unit for bowl: 90)
- Incasso: 81x49 cm (Built-in: 81x49)
- Filotop: 83.3x51.3 cm (Flush: 83.3x51.3 cm)



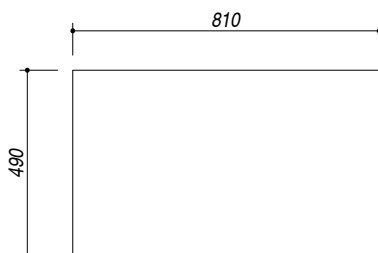
SCALA DISEGNO 1:10
DRAWING SCALE

TUTTE LE MISURE IN mm
ALL MEASURES IN mm

TOLLERANZA LINEARE: ± 0.5 mm
LINEAR TOLERANCE

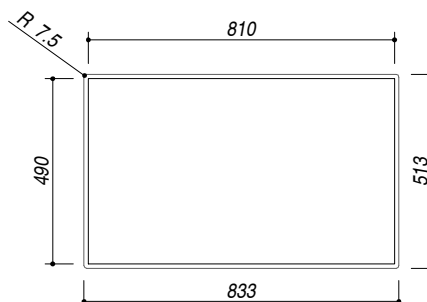
TOLLERANZA ANGOLARE: ± 0.2 °
ANGULAR TOLERANCE

FORATURA PER INSTALLAZIONE AD INCASSO
BUILT-IN CUTOUT FOR TOP



1:20

FORATURA PER INSTALLAZIONE A FILO
FLUSH CUTOUT FOR TOP



ABBASSAMENTO
LOWERING

