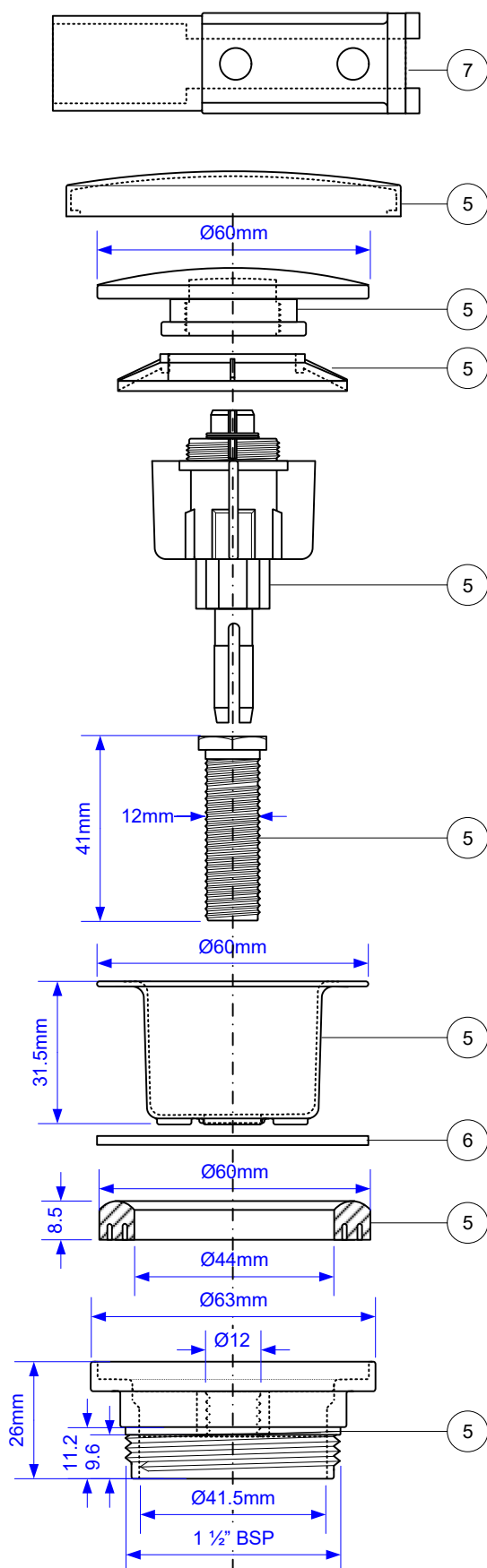


Code:

ABEY6052-BN

Brushed Nickel Dome



Without Using Spacer

Minimum Basin
Thickness = 23mm

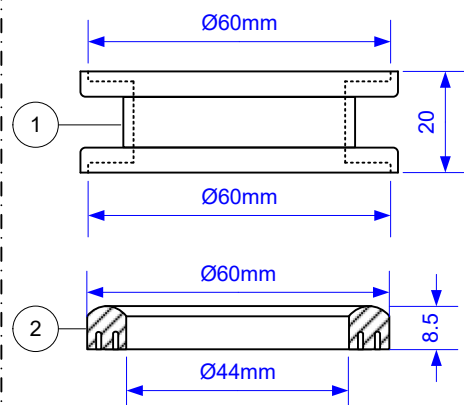
Maximum Basin
Thickness = 51mm

When Using Spacer

Minimum Basin
Thickness = 0mm

Maximum Basin
Thickness = 29mm

Spacer and Seal for use with thinner basins



Part No.	Code
1	CWP60SPACER
2	CWP60SPACER-SEAL
3	L-CWP60-1.50 (Leaflet)
4	P-C-S1Q (Carton)
5	P-CWP60-1.5-CB-BN
6	P-SPW-60MM
7	SPANNER-BATHOF

Drawing verified
correct as of:

03/04/2025
RM

DRAWN BY	RM
SCALE	1: 1.5

REVISÉD

03/04/2025

FILENAME	ABEY6052-BN.VSD
DATE	03/04/2025