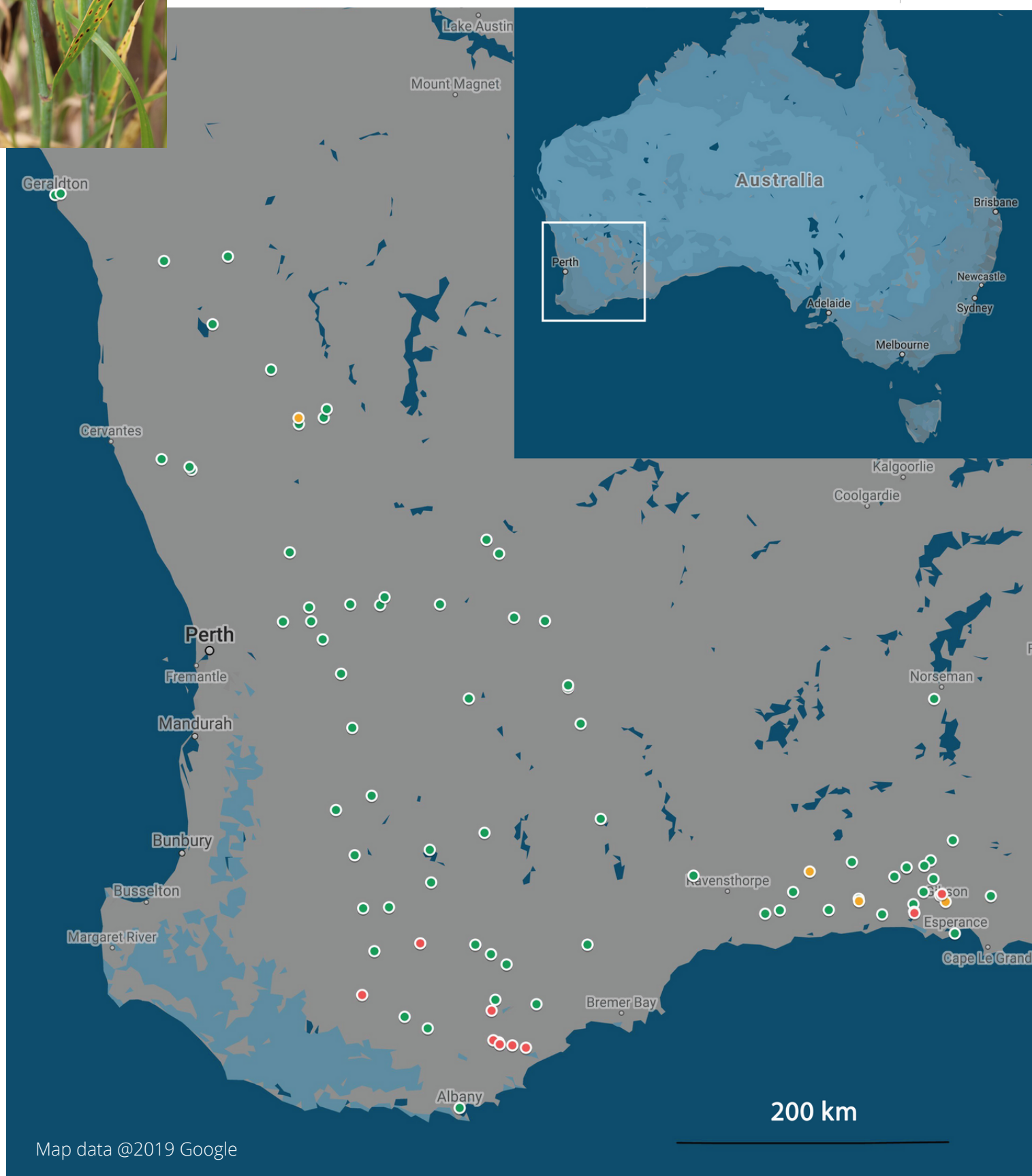


# MAP OF WESTERN AUSTRALIA SHOWING GEOGRAPHIC ORIGIN OF SPOT FORM NET BLOTCH (SFNB) ISOLATES.



## LEGEND

- Reduced sensitivity to Group 3 fungicides
- Resistance to Group 3 fungicides
- Sensitive strains only

Map shows location of spot form net blotch in barley samples tested for resistance to Group 3 fungicide tebuconazole by CDDM researchers. Legend indicates varying levels of resistance.