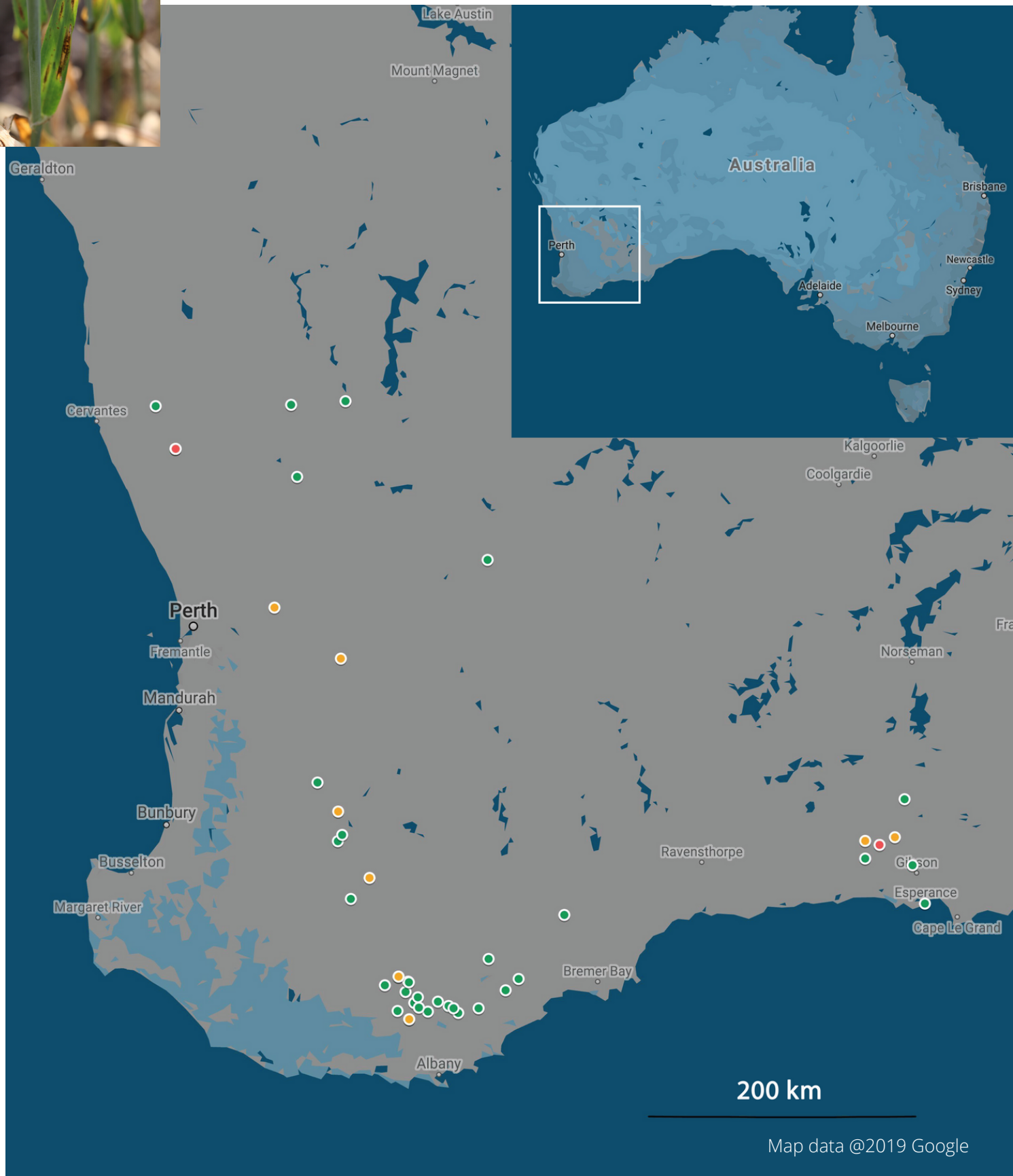




MAP OF WESTERN AUSTRALIA SHOWING GEOGRAPHIC ORIGIN OF NET FORM NET BLOTCH (NPNB) ISOLATES.



LEGEND

- Reduced sensitivity to Group 3 fungicides
- Resistance to Group 3 fungicides
- Sensitive strains only

Map shows location of net form net blotch in barley samples tested for resistance to Group 3 fungicide tebuconazole by CCDM researchers. Legend indicates varying levels of resistance.