

16 July 2025

Kiara Crook
Environment and Compliance Superintendent
Tarago Operations Pty Ltd – Woodlawn Mines

Re: Tarago Operations Pty Ltd proposal to mine within the Woodlawn Notification Area: Woodlawn-3

Dear Ms Crook,

I refer to a letter received from Dams Safety NSW received 13 May 2025 wherein recommendations have been received pursuant to mining within the Woodlawn Notification Area.

The proposal is to conduct underground mining beneath Woodlawn ED1 dam within the Woodlawn Notification Area, designated at Woodlawn-3 by Dams Safety NSW.

Special Condition 9 'Prescribed Dam' of Special (Crown and Private Lands) Lease No 20, approved on 15 August 2013, and by virtue of the delegated authority from the Minister pursuant to the provisions of Section 363(1) of the Mining Act 1992, I hereby conditionally approve the extension of underground mining beneath the Woodlawn Evaporation #1 Dam within the Woodlawn Notification Area designated as Woodlawn-3, as shown on the attached approval plan SML 20 Woodlawn and duly endorsed by Dams Safety NSW on 13 May 2025.

This approval is subject to the observance of the conditions endorsed by Dam Safety NSW on 13 May 2025, such that:

1. Area of underground Mining, dated 6 May 2025 being approved, subject to conditions 1, 2, 3, 4, 5, 6, 8, 10, 16, 18, 21, 22, 25 and 26 of the attached Annexure D. The approval for the expanded area will be Woodlawn 3.

If you require any further information on this matter please contact Anthony Margetts, Chief Inspector on 1300 814 609.

Sincerely



Anthony Margetts

Chief Inspector of Mines

By delegation from the Minister, Department of Primary Industries and Regional Development

Anthony Margetts
Chief Inspector
Resources Regulator
PO Box 344
Hunter Region Mail Centre NSW 2310

Our ref: 10.123.188/154

Your ref:

Develop's application to extend period of mining under **Woodlawn -1 (10.123.188)**
& extend Woodlawn Mine **Woodlawn – 3 (10.123.154)**

This letter contains Dams Safety NSW's recommendations in respect of an application by Develop (attached) to extend the time on the Woodlawn1 approval (attached) and extend the area mine area within Woodlawn Notification Area bringing it closer to Woodlawn ED1 Dam (see plan attached). Woodlawn ED1 is a dam of High C consequence. Since the 2017 Woodlawn 1 approval ED1 has changed from being owned by the Mine to being owned by Veolia Environmental Services. Elements of dam monitoring including dam inspections, seepage monitoring and piezometer readings are now undertaken by the dam owner and are not the responsibility of the mine.

1. Dam Safety NSW's endorses a time extension on Woodlawn 1 from the existing 30 June 2025 until 30 June 2040 with removal of the above mentioned monitoring requirements. This is reflected in the attached Woodlawn 1 extension recommendations.
2. At this stage we are awaiting an assessment of the impact of the proposed extended mining area on ED1 to endorse extraction. Development workings in the proposed extended mining area should not pose a risk to the dam and consequently development workings in the proposed extended mining area are endorsed. Recommended monitoring requirements are as for Woodlawn 1 extension but as the area endorsed lies outside of the currently approved area this has to be treated as a separate application and becomes Woodlawn 3.

Recommendations

These, then, are the Dams Safety NSW's recommendation to the Minister in respect of the application.

That Mining within the currently approved area under Woodlawn 1 ext (attached) be extended until 30 June 2040 with development workings delineated in plum on the approved plan SML20 Woodlawn –

G:\DamSafety\Dataserver\Files_123_MiningApp\254_Woodlawn_3\May 2025\recommendations to CICM 20250513.docx

Area of underground Mining, dated 6 May 2025 being approved, subject to conditions 1, 2, 3, 4, 5, 6, 8, 10, 16, 18, 21, 22, 25 and 26 of the attached Annexure D. The approval for the expanded area will be Woodlawn 3.

Annexure E is referenced by various conditions in Annexure D.

If you have further enquiries regarding this matter please contact Heather Middleton on 0428 288 391.

Yours faithfully,

A handwritten signature in black ink, appearing to read 'H. Middleton', is positioned above the typed name of the signatory.

For Chris Salkovic
Chief Executive Officer Dams Safety NSW



New South Wales Government

Dams Safety NSW



ANNEXURE "D"

STANDARD MINING CONDITIONS

The conditions are laid out as follows:

- Annexure Dx (D, D1, etc) specify what is required to be done by the applicant, and what the Dam Safety NSW may do following certain triggers;
- Annexure E specifies the frequencies of monitoring and report, and the format of reports. That is, it provides details of the deliverables required by the approval;
- Other Annexures may specify additional details, for example Annexure B describes what should be recorded on geological plans.

In Annexure Dx the section often includes a preamble. These may contain guidance as to how to satisfy a condition, or the background to a condition, but are not conditions in themselves. The conditions look like the following paragraph:

Annexure D Condition 0.0: This is a condition; you must comply with it.

Section I. GENERAL REQUIREMENTS

The following general conditions apply to the **Woodlawn 1 Extension**.

There is considerable scope for the Dams Safety NSW to modify the frequency of reporting and monitoring, and the format of reporting, during the life of approval. This is important as it allows the level of monitoring to be increased or decreased according to the risk perceived by Dams Safety NSW. This section sets out a hierarchy within the approvals:

1. Annexure E;
2. a specified management plan;
3. Annexure D.

That is, any frequency specified in Annexure D is overridden by frequencies specified in a management plan or in Annexure E.

Dams Safety NSW prefers applicants to prepare monitoring proposals in the first instance. Often these will become endorsed by being included as a reference in Annexure E. Annexure E will be re-issued by Dams Safety NSW when there is a change to monitoring.

Annexure D Condition 1.1: The:

- Frequency of monitoring;
- Frequency of reporting; and
- Format of reporting;

For any condition hereunder will be as stated in Annexure E or, where no statement is provided in Annexure E, as stated in the relevant "Management Plan" as specified in Annexure E, or, where no Plan is specified in Annexure E or where the Plan makes no statement, as specified in the condition hereunder.

Annexure D Condition 1.2: Dams Safety NSW may modify the content of Annexure E, any associated Management Plan, or the frequency of monitoring or reporting or the format of reporting for any condition hereunder from time to time.

Annexure D Condition 1.3: Where Dams Safety NSW has modified the conditions as per Condition 1.2 and has advised the liaison officer appointed under Condition 5 in writing those modified conditions replace any conditions hereunder and shall have the same effect as if they were part of the approval.

Annexure D Condition 1.4: The Mine shall arrange for Dams Safety NSW staff to inspect the workings from time to time when required by the Dams Safety NSW, and in particular when any significant features are encountered in the workings.

Section II DAMS SAFETY NSW'S EMERGENCY POWERS

Annexure D Condition 2.1: The Minister, on notice from Dams Safety NSW, may at any time or times suspend for a period of time, cancel, alter, omit from or add to this consent or the conditions of this consent.

Annexure D Condition 2.2: Regardless of the content of any management plan, Dams Safety NSW may require by notice in writing the Mine to:

- Cease any or all mining at the subject area until such time as Dams Safety NSW agrees that mining may recommence;
- Undertake investigations as specified by Dams Safety NSW; and/or Undertake remedial works as specified by Dams Safety NSW.

SECTION III OWNERSHIP OF PRESCRIBED DAM

Woodlawn Evaporation Dam # 1 is owned by Veolia Environmental Services (Australia) Pty Ltd. The contact is Raymond Choy Veolia's Environment Manager. Raymond's contact details are: email raymond.choy@veolia.com phone 0472 571 387. To ensure mining is not adversely impacting the Dam it is important that there is good communication between the Mine and the Dam Owner. The Dam owner is responsible for routine inspections and seepage monitoring of the dam and should communicate any findings of note or concern with the Mine and Dams Safety NSW. The Mine is responsible for monitoring blast vibrations on the embankment and conducting movement monitoring of the Dam. The mine will provide the Dam owner and Dams Safety NSW with blast vibration and movement monitoring results at intervals in Annexure E or immediately if exceedances occur. The organisations will cooperate to ensure extraction is not adversely impacting the dam.

Annexure D Condition 3.1: Develop and Veolia Environmental Services (Australia) Pty Ltd will liaise to ensure that extraction is not adversely impacting the dam.

Section IV. CORRESPONDENCE WITH DAMS SAFETY NSW

Annexure D Condition 4.1: All correspondence with Dams Safety NSW in regard to this approval shall be clearly labelled **Woodlawn – 1(ext)**.

Annexure D Condition 4.2: Reports required under the Woodlawn – 1 (ext) consent shall be sent to:

The Chief Executive Officer
Dams Safety NSW
Floor 30, 4 Parramatta Square,
12 Darcy Street,
Parramatta N.S.W. 2150

Locked Bag 5123
Parramatta N.S.W. 2124

Phone: (02) 9842 8073

Email: mining@damsafety.nsw.gov.au

SECTION V LIAISON OFFICER

Effective coordination and management of the monitoring programs is essential. To this end Dams Safety NSW believes that a person should be nominated as a “liaison officer”. Their responsibilities will include:

- Providing a point of contact for Dams Safety NSW,
- Ensuring compliance with the monitoring conditions,
- Coordinating the supply of monitoring data to Dams Safety NSW, and
- Ensuring that Dams Safety NSW is kept up to date of the progress of mining.

Annexure D Condition 5.1: The Mine shall appoint a suitably qualified and experienced person, acceptable to Dams Safety NSW, as a liaison officer for the period when there is active mining in the notification area and for an additional period afterwards as determined by Dams Safety NSW.

Section VI. VARIATIONS

Annexure D Condition 6.1: From time to time the Mine may desire to alter the approved mining within the notification area in a minor way (termed a "minor variation"). Types of minor variations include such things as changes to blast vibration limits,

alterations to development roads within an already approved mine plan etc. Applications for minor variations to existing approvals shall be made to the Chief Inspector of Mines, who will refer the application to Dams Safety NSW.

If the Mine is seeking to change the area, extent or location of mining (ie the mine plan) then a new full application with supporting documentation needs to be submitted. A letter of application and supporting documentation should be sent to the Chief Inspector of Mines, who will refer the application to Dams Safety NSW.

Annexure D Condition 6.2: Dams Safety NSW requires all proposed variations, even small variations, be referred to it (via the Chief Inspector) for its consideration. To expedite the approval process where the proposed variation is urgent and very minor, Dams Safety NSW staff will give a decision by phone, fax, or email to the Mine, and inform the Chief Inspector of their decision. The Mine will then approach the Chief Inspector for formal approval or otherwise, with both parties aware of the Dams Safety NSW's decision. This procedure should only be followed in urgent situations.

Annexure D Condition 6.3: The usual procedure is to submit a written application, with appropriate supporting documentation, to the Chief Inspector of Mines, who will then forward this to Dams Safety NSW for its consideration. The Mine should also send a copy of the application to the Dams Safety NSW so that it may begin processing it. This will allow for a quick reply.

Where the variation is sufficiently extensive (as determined by Dams Safety NSW) the Mine will be required to submit a full application to Mine within the notification area.

Annexure D Condition 6.4: The Chief Inspector of Mines shall not approve any minor variation unless an endorsement by Dams Safety NSW has been received.

Section VII NOTIFICATION OF COMMENCEMENT OF MINING

This section does not apply to the Woodlawn 1 ext mining consent

SECTION VIII MONITORING MANAGEMENT PLANS

Where several monitoring programs are required under an approval Dams Safety NSW requires that a Management Plan be developed for these programs. The plan will specify at least:

- What is required to be done and when,
- What is required to be delivered and when, and
- Who is responsible for each task.

In certain circumstances it may be appropriate for the plan to incorporate other aspects, for example appropriate levels of training, the format of reports, or regular feedback from Dams Safety NSW.

Annexure D Condition 8.1: The Mine shall prepare a Management Plan encompassing all of the monitoring programs required by Dams Safety NSW.

Annexure D Condition 8.2: The plan required above is to be submitted to Dams Safety NSW for its approval as soon as possible.

Annexure D Condition 8.3: The plan required above shall be reviewed by the Mine at intervals as specified in Annexure E. The review process shall include forwarding a copy of the plan to Dams Safety NSW with a request for comments.

SECTION IX MONITORING, REPORTING AND EXTRACTION SCHEDULE

This section does not apply to the Woodlawn 1 (ext) mining consent

SECTION X REPORTS ON THE LOCATION OF THE FACE

This section does not apply to the Woodlawn 1 (ext) mining consent

Section XI SURFACE GEOLOGY/TOPOGRAPHY

This section does not apply to the Woodlawn 1 (ext) mining consent

Section XII INSPECTION OF WORKINGS

This section does not apply to the Woodlawn 1 (ext) mining consent

Section XIII SEAM LEVEL GEOLOGICAL FEATURES

This section does not apply to the Woodlawn 1 (ext) mining consent

Section XIV WATER MONITORING

This section does not apply to the Woodlawn 1 (ext) mining consent

Section XV EMERGENCY WATER CONDITIONS

This section does not apply to the Woodlawn 1 (ext) mining consent

Section XVI. SUBSIDENCE AND STRAIN MONITORING

Annexure D1 Condition 16.1: The Mine shall develop a program of subsidence monitoring of settlement points, established along the embankment crest of the Evaporation # 1 Dam at intervals not greater than 50m, to a standard acceptable to their dams engineer.

Annexure D1 Condition 16.2: The Mine shall submit a report on the subsidence results including graphed subsidence data at intervals and in a format as specified in Annexure E.

Section XVII INSPECTION OF DAM

This section does not apply to the Woodlawn 1 (ext) mining consent

Section XVIII SEEPAGE MONITORING

This section does not apply to the Woodlawn 1 (ext) mining consent

Section XIX PIEZOMETER MONITORING

This section does not apply to the Woodlawn 1 (ext) mining consent

Section XX. MOVEMENT MONITORING

This section does not apply to the Woodlawn 1 (ext) mining consent

Section XXI VIBRATION MONITORING

Where Dams Safety NSW considers that a mining application will generate significant ground vibrations, for example as a result of blasting in an open cut, then the Dams Safety NSW may specify a peak particle velocity limit at critical structures. Vibration monitoring will normally be required to ensure that this limit is not exceeded.

Annexure D Condition 21.1: The Mine will develop and implement a program to monitor particle velocities generated by mining at sites on the Woodlawn Evaporation #1 Dam prior to mining.

Annexure D Condition 21.2: The Mine shall ensure that peak particle velocities generated as a result of mining will not exceed 50 mm/s at any point on Woodlawn Evaporation #1 Dam embankment.

Annexure D Condition 21.3: Written reports on the results of the monitoring outlined in the above condition 21.1 shall be submitted to Dam Safety NSW at intervals as specified in Annexure E.

Annexure D Condition 21.4: Dam Safety NSW will be informed immediately if peak particle velocities (PPV), as a result of mining at any point on Woodlawn Evaporation #1 Dam, exceed 50mm/s.

Annexure D Condition 21.5: If peak particle velocities exceed the limits set in the above condition 21.4, then a full inspection of ED1 will be undertaken by a dam specialist within 72 hours.

Section XXII COMPLIANCE REPORT

Where several monitoring programs are required under an approval it is time consuming to check for the compliance with the conditions. As it is the Mine's responsibility to maintain compliance with the conditions Dams Safety NSW's believes that the Mine is the appropriate organisation to undertake the bulk of this role.

Annexure D Condition 22:1 The Mine shall submit a statement of its compliance with the required conditions at intervals as specified in Annexure E.

SECTION XXIII CONTINGENCY PLANS

This section does not apply to the Woodlawn 1 (ext) mining consent

SECTION XXIV CLOSURE REQUIREMENTS

This section does not apply to the Woodlawn 1 (ext) mining consent

Section XXV COMPLETION OF MONITORING

Annexure D Condition 25.1: Regardless of the status of mining or location of the active face, all monitoring and reporting shall continue as specified until Dams Safety NSW considers that it is no longer required, or that the frequency of the monitoring can be altered. The Mine may apply to Dams Safety NSW for

modification to the frequency of monitoring, or for the discontinuance of monitoring

SECTION XXVI CESSATION OF THIS APPROVAL

Annexure D Condition 26.1: No mining shall be undertaken in the approved area after 30 June 2040 unless such date is extended by Dams Safety NSW.

END OF ANNEXURE D

Annexure E

Frequency of Monitoring and Reporting

Format Statement

Table of deliverables

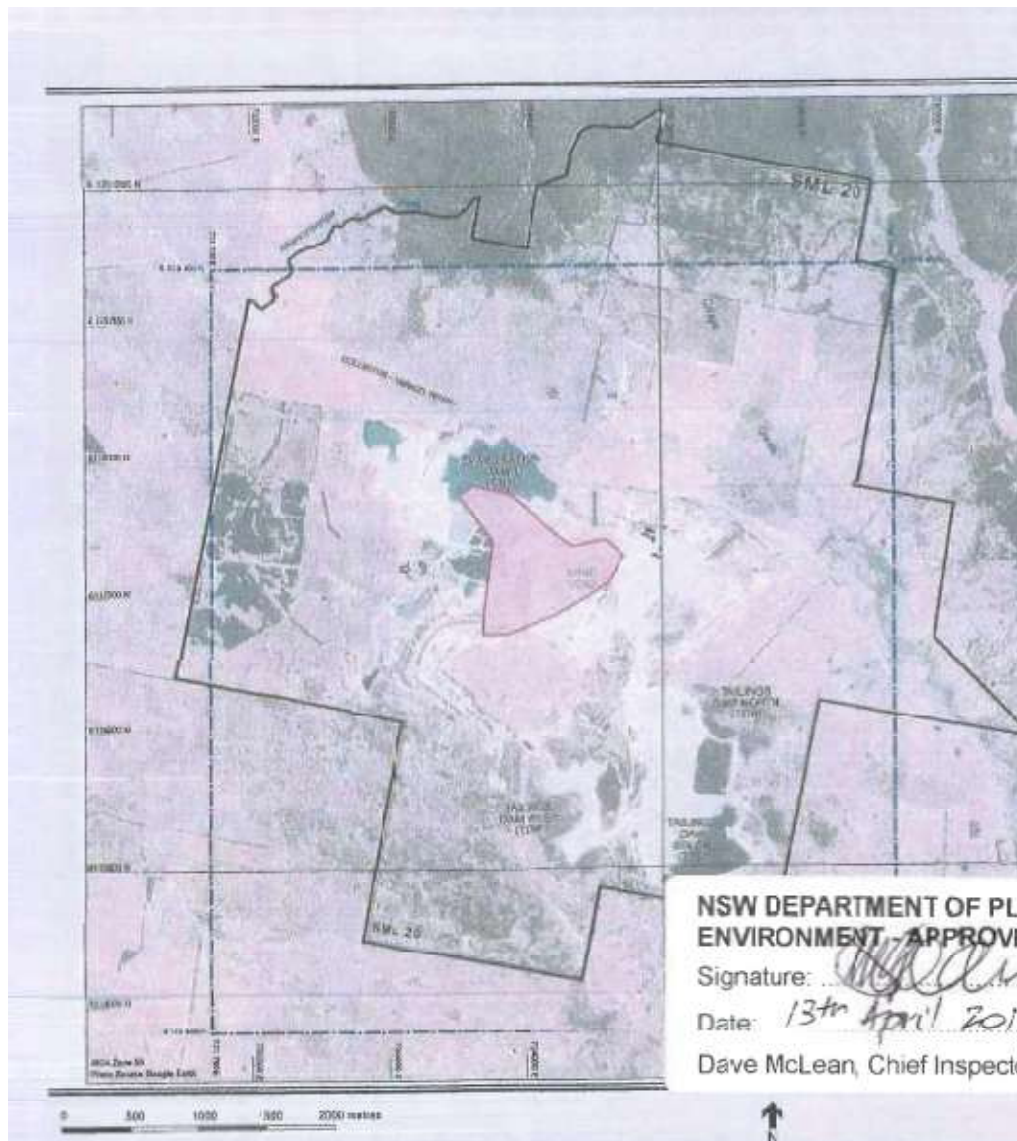
WOODLAWN_1 – APPROVAL (REISSUED MAY 2025)



Frequency of Monitoring	Frequency of reporting	Condition	Deliverable Description	Due Date	Management Plan
	One off	ANN D/22.1	Liaison officer appointed	As soon as possible	
	One off	ANN D/3.1	Notification of commencement of mining	Within 7 days of commencement	
	One off	ANN D/17	Monitoring Management Plan to the satisfaction of the Committee	As soon as possible	Reviewed annually
	One off	ANN D/14.2	Vibration monitoring program – DSC to be informed	As soon as possible	
	One off	ANN D1/3	Seepage monitoring plan	As soon as possible	
3 monthly	3 monthly	ANN D1/4	Results of crest subsidence monitoring	Within 1 month of subsidence survey	
Per blast	Monthly	ANN D/ 14.3	Monitor vibrations on embankment		
	Monthly	ANN D/ 14.3	Reports on results of vibration monitoring		
Monthly	Monthly	ANN D1/3	Monitor seepage from the dams		
	Monthly	ANN D1/3	Reports on monitoring seepage		

Yearly	Yearly	ANN D1/2.1	Inspection of dams		
Yearly	Yearly	ANN D1/ 2	Reports on inspection of dam		
	Monthly	ANN D/ 20	Compliance statement		
	Annually	ANN D/ 17	Review of Monitoring Management Plan	By August 31	
	Annually	ANN D/ 19	Statistics report for year ended 30 June	By July 31	
As required		ANN D/ 14.4	Notification if PPV exceeds 50 mm/s for ED1	Immediately	
As required		ANN D1/ 3.3	Notification if seepage changes significantly	Immediately	

THIS APPROVAL CEASES 30/06/2025



NSW DEPARTMENT OF PLANNING & ENVIRONMENT - APPROVED

Signature: *[Signature]*

Date: 13th April 2017

Dave McLean, Chief Inspector

Dams Safety New South Wales
Recommendations to the Minister in respect of an extension of time for UNDERGROUND mining within the Woodlawn Notification Area.

WOODLAWN - 1 (ext)

- This approval is until 30/6/2040
- This approval is for underground mining within the area coloured RED.

[Signature]

13 May 2025



