

DEVELOP

Environmental Performance Report Q1: July to September 2026

Woodlawn Zinc Copper Mine

Document Review/Change History

Date	Summary of review and changes	Revision No.	Authors	
			Drafted by	Reviewed by
22/10/2025	All monitoring data received from laboratory	A	OE	-
31/10/2025	Document finalised	0	OE	KC

Contents

1. Introduction	3
1.1. EPL License information	3
1.2. Background	3
1.3. Purpose	3
2. Monitoring Sites and Limits.....	4
2.1. Monitoring sites with limits	4
2.2. Monitoring sites without limits	5
3. Monitoring Results	6
3.1. Meteorological data	6
3.2. Analytical results	6
3.3. Noise monitoring	9
3.4. Compliance summary	11

TABLES

Table 1-1 EPL details	3
Table 2-2 Summary of monitoring results and limits	4
Table 2-3 Summary of monitoring sites not associated with limits	5
Table 3-4 Weather station summary	6
Table 3-6 Baseline ambient noise levels for each site	9
Table 3-5 Attended noise monitoring results.....	10
Table 3-7 Compliance summary	11

Graphs

Graph 1 PM10 quarterly results and the rolling average compared to the applicable criterion	7
Graph 2 TSP quarterly results and the rolling average compared to the applicable criterion	7
Graph 3 Total Solids compared to the applicable criterion for DG28	8

Appendices

Appendix 1 Plans	12
Appendix 2 Monthly Wind Rose	15
Appendix 3 Monitoring Data	17

1. INTRODUCTION

1.1. EPL License information

Details of the Environmental Protection License (EPL) are summarised in Table 1-1.

Table 1-1 EPL details

EPL No.	20821
Licensee	Tarago Operations Pty Ltd
Licensee address	Woodlawn Mine 507 Collector Road TARAGO NSW 2580
Link to full licence on the EPA website	19 December 2023 Version: https://app.epa.nsw.gov.au/prpoeoapp/ViewPOEONotice.aspx?DOCID=-1&SYSUID=1&LICID=1635655

1.2. Background

The Woodlawn Zinc-Copper mine (the Project) is located approximately 7 km northwest of Tarago in New South Wales (NSW) within Special (Crown and Private Land) Mining Lease 20 (SML20). The original Woodlawn mine operated from 1978 to 1998 and processed 13.8Mt of ore from the Woodlawn open pit, underground and minor satellite deposits. Following its prolonged closure, the Project was acquired by ASX-listed Heron Resources who secured Project Approval in July 2013 following the public exhibition of an Environmental Assessment (EA). Heron completed the construction of the project and developed the new underground mine in accordance with the Project Approval before it was put on care and maintenance in March 2020. Heron was placed in administration in July 2021. Develop Global Limited (DEVELOP) completed its acquisition of the Project in May 2022 including Tarago Operations Pty Limited which holds Special Mining Lease (SML) 20 and EPL 20821. Veolia operates an eco-precinct, including a licensed landfill, within SML20 but separated from the project and has separate EPL’s as per Plan 1 in Appendix 1. 10 turbines as part of the Capital Windfarm operated by Iberdrola are also located within the mining lease and covered by a separate EPL.

Monthly reports were produced up until March 2025 when quarterly reports were subsequently introduced to align with the updated Environmental Management Strategy and the quarterly sampling frequency for water sampling. The quarters are as follows:

- Q1: July to September
- Q2: October to December
- Q3: January to March
- Q4: April to June

1.3. Purpose

The purpose of this environmental performance report is to provide regular updates of monitoring data in accordance with the requirements of NSW Environmental Protection License (EPL) 20821, Section 66(6) of the Protection of the Environment Operations Act 1997 (POEO Act) and the mining lease, SML 20. Copies of the key regulatory documents are provided on DEVELOP’s website: <https://www.develop.com.au/woodlawn-sustainability/>

A complaints register is available on the same website (under the link ‘community documents’) and is updated monthly.

2. MONITORING SITES AND LIMITS

2.1. Monitoring sites with limits

The monitoring sites associated with prescribed limits are summarised in Table 2-2. The locations of these are presented on Plan 2, Appendix 1. For privacy reasons specific locations of noise monitoring locations are not included on this plan. Their location is further described in Section 3.3.

Table 2-2 Summary of monitoring results and limits

Pollutant	Units of measure	Monitoring frequency	Monitoring sites	Limit
Deposited dust	g/m ² /month	Monthly	DG28	4 ^a : Maximum total deposited dust level 2 ^b : Maximum increase in deposited dust level
TSP	µg/m ³	24 hrs every six days	High Volume Air Sampler (HVAS)	90 ^c : annual average
PM10	µg/m ³	24 hrs every six days	HVAS	30 ^d : annual average 50 ^d : 24 hour average
Noise	LAeq, 15 min LA1(max)	Monthly	NM001 NM002	35: day, evening, night 45: night
Airblast ^f	dB(Lin Peak)	- ^f	- ^f	Anytime: 120 (0% allowable exceedance) Day: 115 (5% allowable exceedance of the total number of blasts over a period of 12 months)
Ground vibration	mm/s	- ^g	- ^g	Anytime: 10 (0% allowable exceedance) Day: 5 (5% allowable exceedance of the total number of blasts over a period of 12 months) Evening: 2 (5% allowable exceedance of the total number of blasts over a period of 12 months) Night and all day on Sundays and public holidays: 1 (0% allowable exceedance)

Explanation of units of measurement

- g/m²/month: grams per square metre per month
- µg/m³: micrograms per cubic metre mg/m³: milligrams per cubic metre
- LAeq, 15 min: The equivalent continuous sound pressure level over 15 minutes using a filter which makes the measurement more representative of how humans perceive sound.
- dB: decibels
- mm/s: millimetres per second

^a Total impact (i.e. Incremental increase in concentrations due to the project plus background concentrations due to all other sources).

^b Incremental impact (i.e. incremental increase in concentrations due to the project on its own)

^c Deposited dust is to be assessed as insoluble solids as defined by Standards Australia, AS/NZS 3580.10.1:2003: Methods for Sampling and Analysis of Ambient Air – Determination of Particulate Matter – Deposited Matter – Gravimetric Method.

^d Excludes extraordinary events such as bushfires, prescribed burning, dust storms, fog, fire incidents or any other activity agreed by the Director-General.

^e Total impact (i.e. Incremental increase in concentrations due to the project plus background concentrations due to all other sources).

^f Only applicable to surface blasting which DEVELOP does not currently undertake

^g Limit is only applicable to residences on any privately owned land. Due to distance from site there are currently no monitoring sites established. DEVELOP maintains an internal network of ground vibration monitors as further detailed in the Blast Management Plan available on the website.

2.2. Monitoring sites without limits

The monitoring sites that are required to be monitored by the EPL but are not associated with any prescribed limits are summarised in Table 2-3. In general, the annual analytes required are typically collected in Q1. It is noted that many of these monitoring sites are still associated with triggers for internal assessment and escalation as described in the various management plans. Comparison and comment on these are provided in the sites annual review available on the DEVELOP website.

Table 2-3 Summary of monitoring sites not associated with limits

Medium	Monitoring sites	Monitoring analytes	Units of measure	Monitoring frequency
Deposited dust	DG22, DG33, DG34	Deposited dust	g/m ² /month	Monthly
Surface water	115, 105, 100, 109, 300, TSF4	BOD, conductivity, dissolved oxygen, nitrogen (ammonia), potassium, TDS, TOC	mg/L	Quarterly
		pH	-	Quarterly
		Redox potential	mV	Quarterly
Groundwater	MB4, MB5, MB6, MB8, MB11, MB12, MB13, MB14, MB15, MB16, MB17	Alkalinity (as calcium carbonate), aluminium, arsenic, barium, cadmium, calcium, chloride, chromium (total), cobalt, copper, fluoride, lead, magnesium, manganese, mercury, nitrate, nitrite, nitrogen (ammonia), potassium, sodium, sulfate, total dissolved solids, total organic carbon, zinc	mg/L	Quarterly
		pH	-	Quarterly
		Standing water level	Metres	Quarterly
		Benzene, chromium (hexavalent), ethyl benzene, organochlorine pesticides, organophosphate pesticides, polycyclic aromatic hydrocarbons, toluene, total petroleum hydrocarbons, total phenolics, xylene	mg/L	Annually
Noise	NM005	Various as per noise management plan	LAeq, 15 min, LA1(max)	Monthly

Explanation of units of measurement

- g/m²/month: grams per square metre per month
- mg/L: milligrams per litre
- mV: millivolts

3. MONITORING RESULTS

3.1. Meteorological data

Site weather is obtained from the meteorological station located at the EPL 11436 premises. A summary of the weather data is shown in Table 3-4.

Table 3-4 Weather station summary

Month	Average Temp min (°C) ¹	Average Temp max (°C) ¹	Total Rain (mm)	No. of wet days (total)	Avg wind speed (km/h)	Avg wind direction (deg)	Total evapo transpiration (mm)
July	3.49	9.53	68.00	10	15.7	224	20.36
August ¹	3.86	11.15	62.00	15	13.2	180	55.60 ²
September	5.85	14.84	85.00	7	16.2	238	97.30 ²

¹21/08/2025-22/08/2025 recorded 23.8 hours of data due to maintenance works

²Evapotranspiration taken from Goulburn Weather Station data

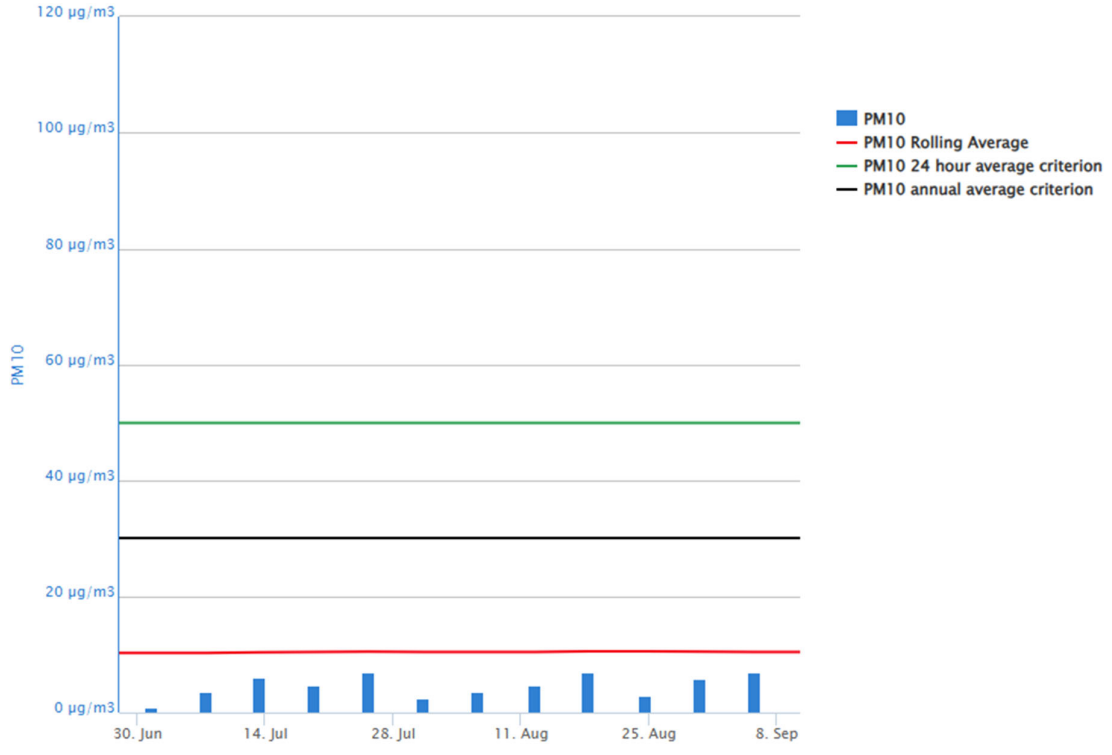
The wind rose for each month are presented in Appendix 2 which depicts the wind speed and direction recorded at 10 m above ground level.

3.2. Analytical results

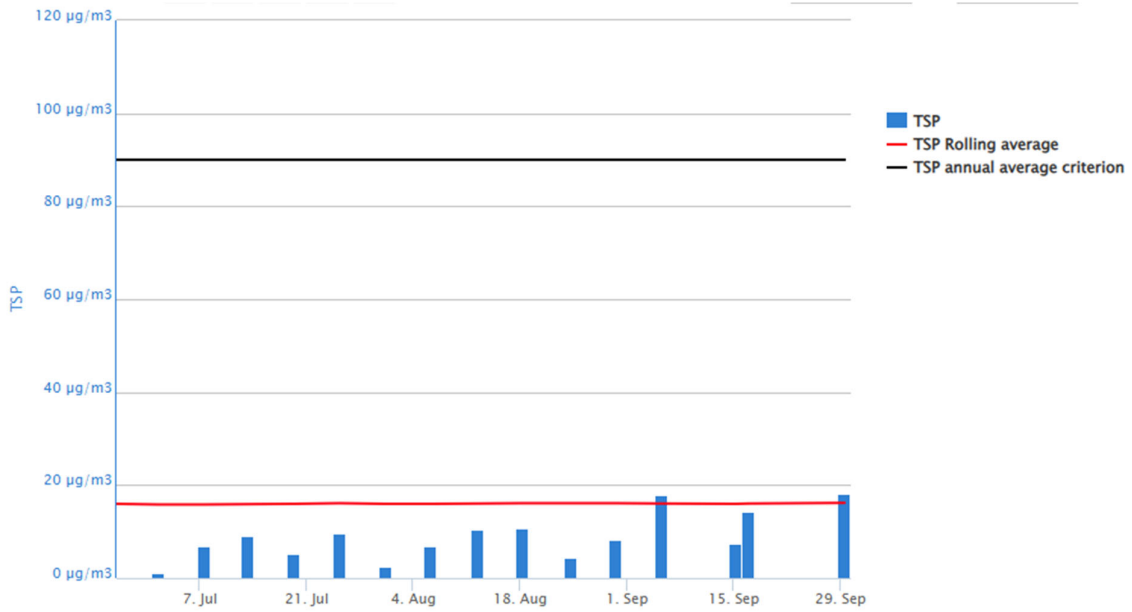
The quarterly results are presented in Appendix 3 for each location monitored and sampled. Locations are either sampled once (in the case of groundwater or surface water) or three times (in the case of deposited dust and noise monitoring).

The High Volume Air Sampler (HVAS) results for the quarter are presented in Graph 1 for the Particulate Matter less than 10 microgram per cubic meter (PM10 µg/m³) and Graph 2 for the Total Suspended Particulate matter (TSP). The graphs also display the annual rolling average (red line) and any applicable criteria as described in Section 2.1.

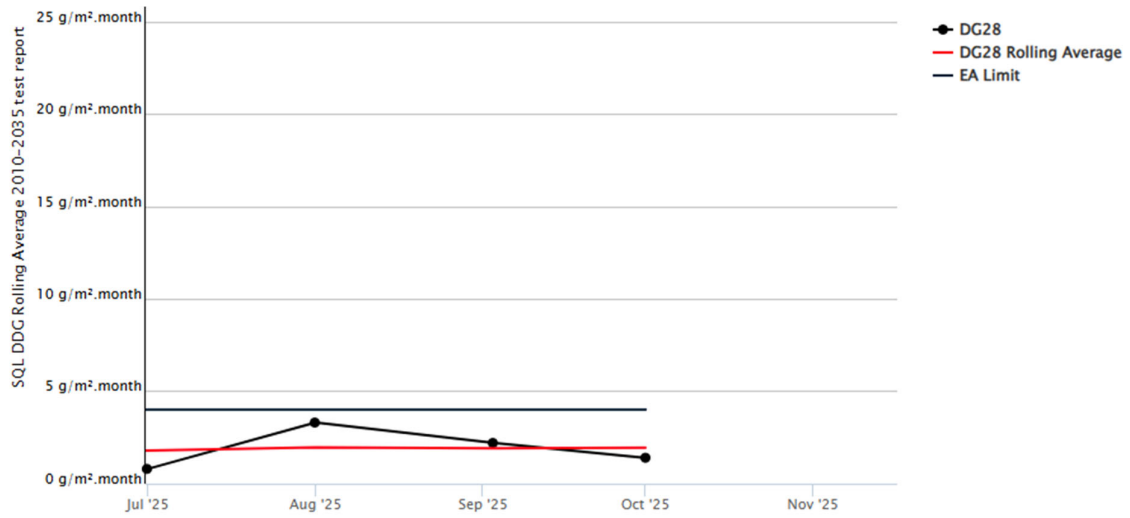
Deposited dust results for the nearest sensitive receptor (DG28) are presented in Graph 3 compared to the criteria as described in Section 2.1. Analytical results for the other monitoring sites which assess deposited dust are included in Appendix 3.



Graph 1 PM10 quarterly results and the rolling average compared to the applicable criterion



Graph 2 TSP quarterly results and the rolling average compared to the applicable criterion



Graph 3 Total Solids compared to the applicable criterion for DG28

3.3. Noise monitoring

Attended noise monitoring was completed during the month to evaluate the performance of the project and compare to the baseline levels for the area at the following locations:

- NM001 is located west of the project beyond the mining lease boundary on Taylors Creek Road.
- NM002 is located northwest of the project beyond the mining lease boundary on Collector Road.
- NM005 is located in the vicinity of DG28 as indicated on Plan 2, Appendix 1 which is owned by Veolia.

Noise monitoring recommenced in May to align with the significant re-start of the processing plant with the results presented in Table 3-6

Since the project is adjacent to other noise generating operations comparison of monitoring data is made with respect to the baseline noise survey completed in December 2024. The baseline noise survey determined ambient noise levels from unattended monitoring completed over a minimum of a 7 days period. The ambient noise level for each monitoring site is presented in Table 3-5. Monitoring data collected during operations is subsequently compared to these levels in order to make a determination of project compliance.

Table 3-5 Baseline ambient noise levels for each site

Timing	Monitoring Parameter	Units	NM001	NM002	NM005
Day 7 am to 6 pm Monday to Saturday, 8 am to 6 pm Sunday	LAeq, 15 min	dB	66	62	46
Evening 6 pm to 10 pm Monday to Sunday	LAeq, 15 min	dB	44	50	63
Night 10 pm to 7 am Monday to Saturday, 10 pm to 8 am Sunday	LAeq, 15 min	dB	45	46	45

Table 3-6 Attended noise monitoring results

Monitoring Parameter	Units	NM001			NM002			NM005		
		28/07/2025	03/06/25	02/09/2025	28/07/2025	04/08/2025	02/09/2025	28/07/2025	04/08/2025	02/09/2025
Start date	-	28/07/2025	03/06/25	02/09/2025	28/07/2025	04/08/2025	02/09/2025	28/07/2025	04/08/2025	02/09/2025
Start time	-	14:13	14:06	10:36	14:50	14:38	11:09	15:40	15:09	14:20
Wind Speed at microphone height	m/s	4.6	2.1	2.2	1.4	0	0	4.3	0	0
Wind Speed at ground level	m/s	3.8	1.6	0	2.4	0	0	1.6	0	0
Wind direction	-	North-West	East	West	West	-	-	West	-	-
LAeq, 15 min	dB	-	50.9	37.7	53.6	51.4	46.9	54.1	63.1	68.3
LAFmin	dB	-	42.1	26.7	46.9	41	35.8	45.8	44	43.6
LA1(max)	dB	-	65.2	57.4	69.1	72.3	75.6	68.1	79.9	85.4
Comments		Unable to monitor due to high winds this month	Sound not related to project	Sound not related to project	Sound not related to project	Sound not related to project	Sound not related to project	Sounds not related to project	Sounds not related to project	Minor detections of evaporators, sounds predominately not project related

3.4. Compliance summary

The results of the quarterly monitoring have been compared to the limits identified Section 2.1 and summarised in Table 3-7.

Table 3-7 Compliance summary

Pollutant	Monitoring sites	Compliant with limits	Comments
Deposited dust	DG28	Yes	Below criterion for entire quarter.
PM10	HVAS	Yes	Below criterion for entire quarter.
TSP	HVAS	Yes	TSP sample from 23/09/2025 was unable to be analysed by the lab due to a large portion of the sample paper missing, which was attributed to wind damage. All other results below criterion for entire quarter.
Noise	NM001	Yes	Due to unsuitable weather conditions during July it was not possible to carry out noise monitoring. Noise monitoring comparable to ambient conditions for rest of quarter.
	NM002	Yes	Due to unsuitable weather conditions during July it was not possible to carry out noise monitoring. Noise monitoring comparable to ambient conditions for rest of quarter.

Appendix 1 Plans

732000

736000

740000

612000

612000

6116000

6116000

SML 20 (The Woodlawn Site)

Environment Protection Licences

- EPL 20436 (Infigen Energy)
- EPL 20821 (Tarago Operations)
- EPL 20476 (Veolia MBT)
- EPL 11436 (Veolia Bioreactor)

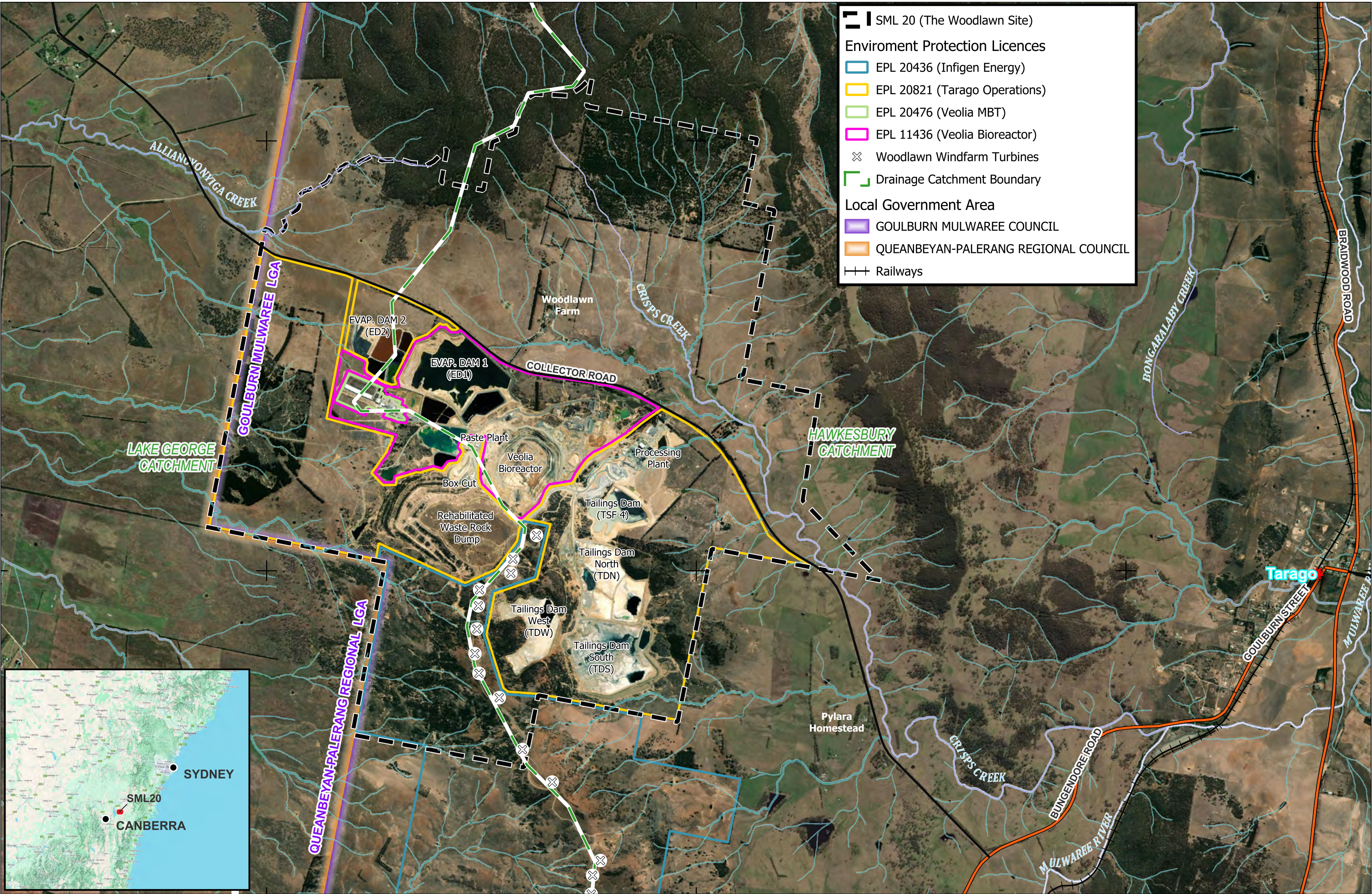
⊗ Woodlawn Windfarm Turbines

▭ Drainage Catchment Boundary

Local Government Area

- GOULBURN MULWAREE COUNCIL
- QUEANBEYAN-PALERANG REGIONAL COUNCIL

⊕⊕ Railways



732000

736000

740000

1 2 km

Scale: 1:32,000 MGA94 (Zone 55)

VTX-JOB-0386-MAP-01

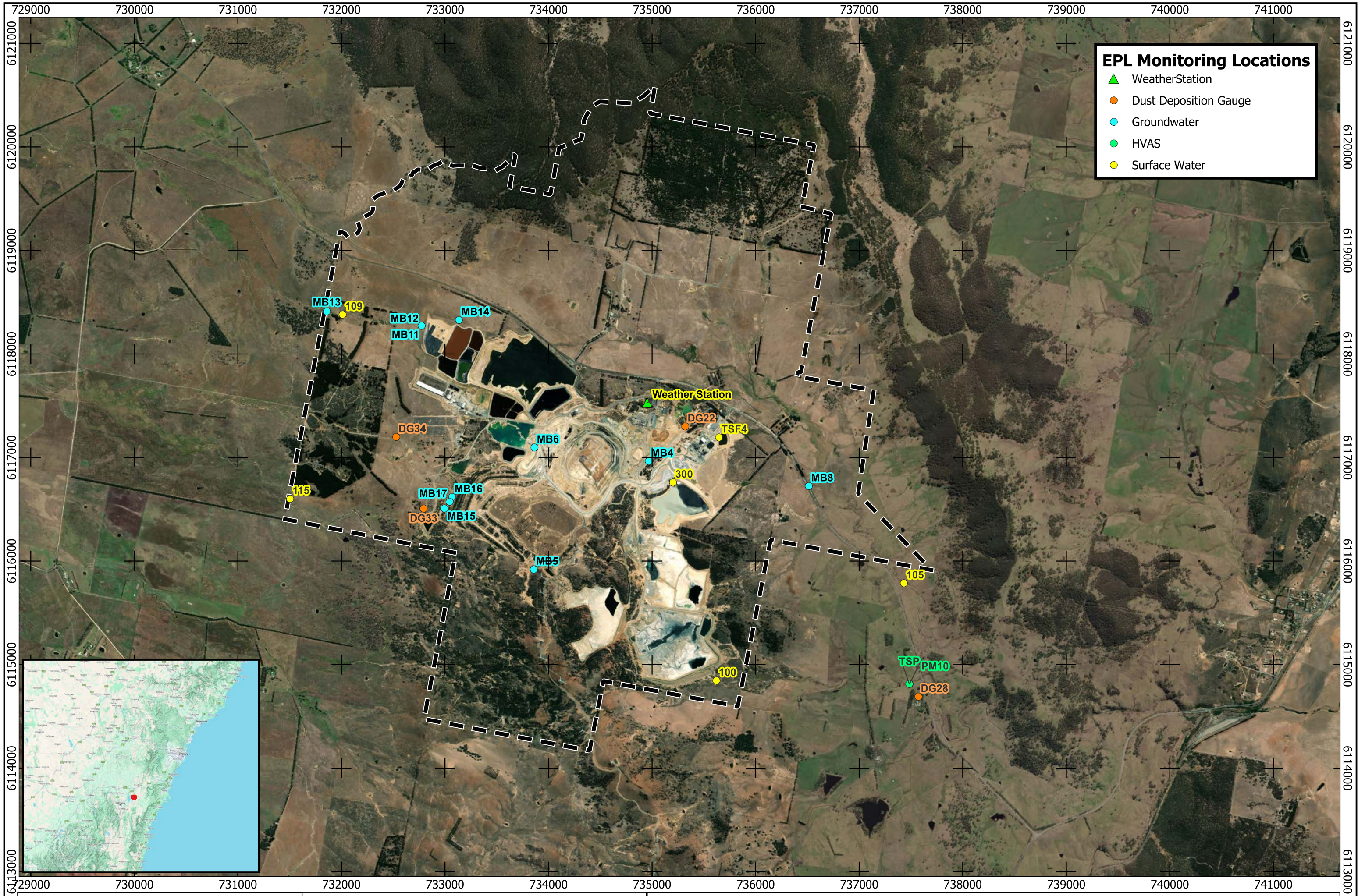
Date: 2024-11-19 Rev: 03 @A3

DEVELOP

WOODLAWN ZINC COPPER PROJECT

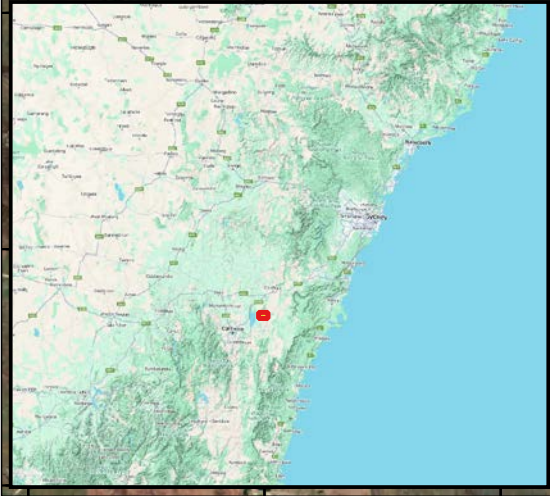
Site Plan

Author: M Hinton Requested By: K Crook



EPL Monitoring Locations

- ▲ Weather Station
- Dust Deposition Gauge
- Groundwater
- HVAS
- Surface Water



500 1,000 m



DEVELOP

WOODLAWN ZINC COPPER PROJECT
EPL Monitoring Locations

Scale: 1:32,000 MGA94 (Zone 55)
 VTX-JOB-0455-MAP-01 V2
 Date: 2025-8-15 Rev: 01 @A3 Author: C Hobbs Requested By: K Crook

Appendix 2 Monthly Wind Rose

[2025-07-01 00:00:00 - 2025-07-31 23:59:59]

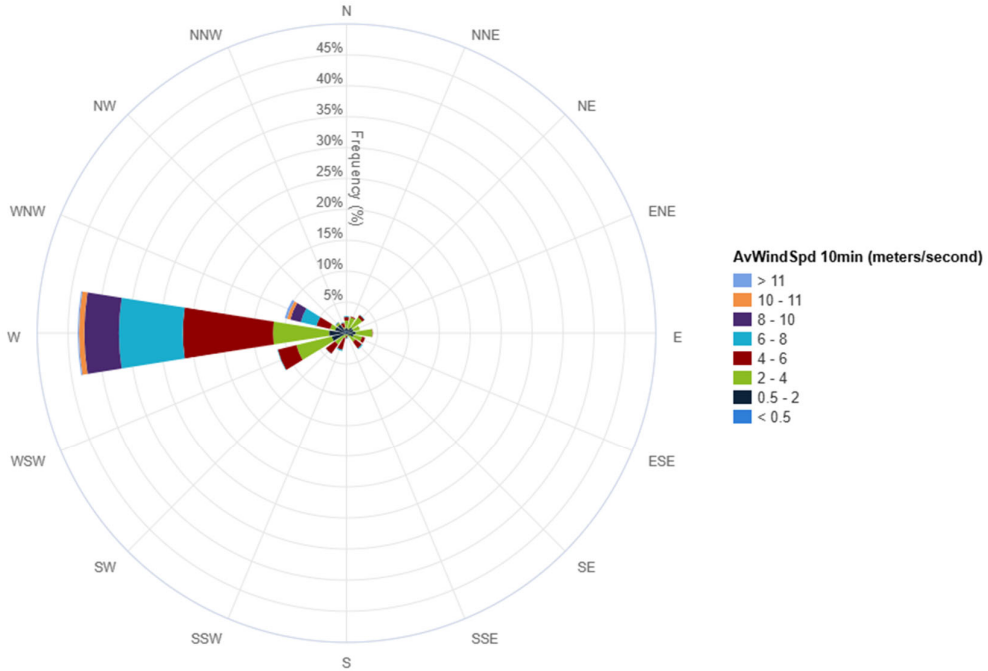


Figure 3-1 Wind rose for July 2025

[2025-08-01 00:00:00 - 2025-08-31 23:59:59]

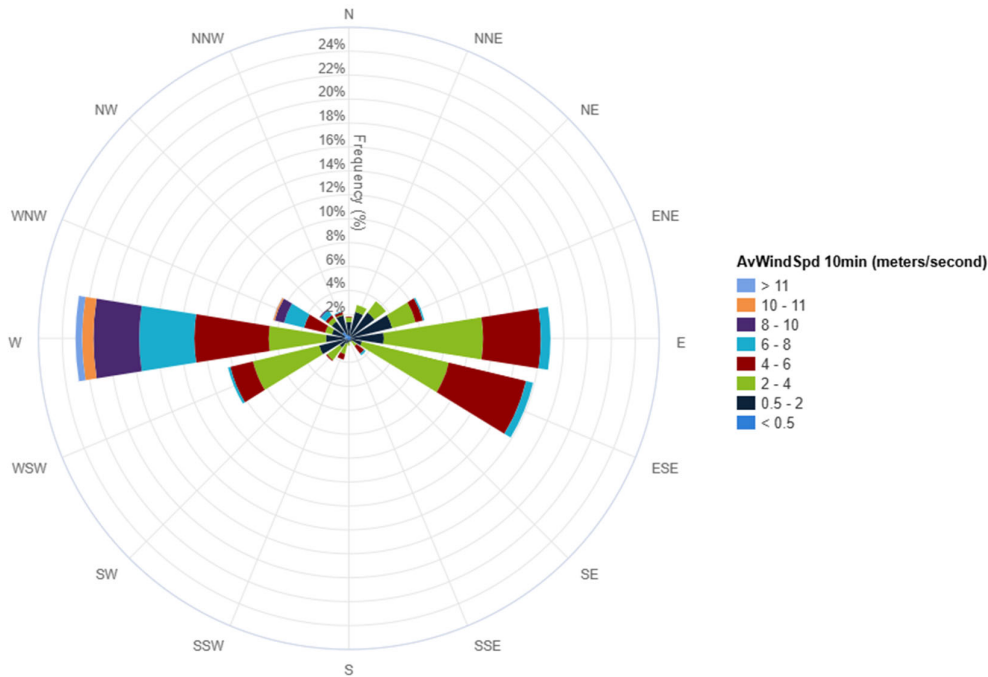


Figure 3-2 Wind rose for August 2025

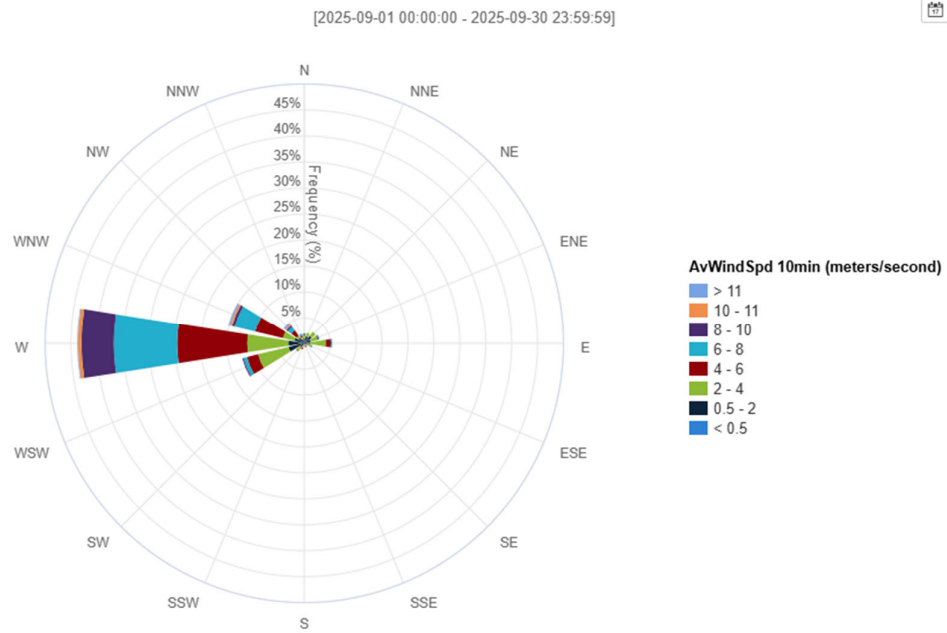


Figure 3-3 Wind rose for September 2025

Appendix 3 Monitoring Data

		Analyte FRACTION Unit	PM10 N µg/m3
Location	Sample Date	Lab Report	Result
PM10	1/07/2025	CA2503991	< 1.0
PM10	7/07/2025	CA2504172	3.6
PM10	13/07/2025	CA2504298	6.1
PM10	19/07/2025	CA2504431	4.7
PM10	25/07/2025	CA2504707	7.0
PM10	31/07/2025	CA2504707	2.4
PM10	6/08/2025	CA2504890	3.5
PM10	12/08/2025	CA2504890	4.8
PM10	18/08/2025	CA2505035	6.9
PM10	24/08/2025	CA2505181	3.0
PM10	30/08/2025	CA2505405	5.9
PM10	5/09/2025	CA2505537	6.9
PM10	15/09/2025	CA2505825	4.5
PM10	17/09/2025	CA2505825	4.2
PM10	23/09/2025	CA2505825	4.8
PM10	29/09/2025	CA2506085	8.1
TSP	1/07/2025	CA2503991	< 1.0
TSP	7/07/2025	CA2504172	7.0
TSP	13/07/2025	CA2504298	9.1
TSP	19/07/2025	CA2504431	5.3
TSP	25/07/2025	CA2504707	9.7
TSP	31/07/2025	CA2504707	2.5
TSP	6/08/2025	CA2504890	7.0
TSP	12/08/2025	CA2504890	10.5
TSP	18/08/2025	CA2505035	10.6
TSP	24/08/2025	CA2505181	4.5
TSP	30/08/2025	CA2505405	8.2
TSP	5/09/2025	CA2505537	17.9
TSP	15/09/2025	CA2505825	7.4
TSP	17/09/2025	CA2505825	14.2
TSP	29/09/2025	CA2506085	18.1

		Analyte FRACTION Unit	Ash Content N g/m ² .month	Total Insoluble Matter N g/m ² .month
Location	Sample Date	Lab Report	Result	Result
DG22	1/07/2025	CA2503991	2.34	2.6
DG22	1/08/2025	CA2504707	0.75	1.0
DG22	3/09/2025	CA2505405	0.87	1.3
DG28	1/07/2025	CA2503991	0.33	0.8
DG28	1/08/2025	CA2504707	0.76	3.3
DG28	3/09/2025	CA2505405	1.53	2.2
DG33	1/07/2025	CA2503991	1.06	1.5
DG33	1/08/2025	CA2504707	1.48	2.1
DG33	3/09/2025	CA2505405	1.81	2.4
DG34	1/07/2025	CA2503991	0.27	0.4
DG34	1/08/2025	CA2504707	0.53	0.8
DG34	3/09/2025	CA2505405	0.34	0.5

Analyte	FRACTION	Unit	Location	MB11	MB12	MB13	MB14	MB15	MB16	MB17	MB4	MB5	MB6	MB8
			Sample Date	8/07/2025	8/07/2025	14/07/2025	14/07/2025	9/07/2025	9/07/2025	9/07/2025	14/07/2025	14/07/2025	8 Aug 2025	15/07/2025
			Lab Report	CA2504172	CA2504172	CA2504298	CA2504298	CA2504172	CA2504172	CA2504172	CA2504298	CA2504298	CA2504298	CA2504298
Aluminium	D	mg/L	Result	306	373	0.03	0.03	0.17	2580	0.19	0.13	34.2	DRY	0.02
Arsenic	D	mg/L	Result	0.107	0.126	< 0.001	< 0.001	< 0.01	0.212	< 0.01	0.001	< 0.005	DRY	< 0.001
Barium	D	mg/L	Result	< 0.0500	< 0.0500	0.0256	0.0027	0.0176	< 0.0500	0.0215	0.0332	< 0.0025	DRY	0.0709
Cadmium	D	mg/L	Result	21.4	22.4	0.00011	0.00022	0.00432	38.7	0.00788	0.00257	0.163	DRY	0.00013
Calcium	D	mg/L	Result	440	435	142	160	499	486	438	9.73	184	DRY	92.4
Chromium	D	mg/L	Result	< 0.200	< 0.200	< 0.002	< 0.002	< 0.020	< 0.200	< 0.020	< 0.002	< 0.010	DRY	< 0.002
Cobalt	D	mg/L	Result	11.7	12.6	< 0.0002	< 0.0002	0.0072	27.3	0.889	0.0222	1.15	DRY	< 0.0002
Copper	D	mg/L	Result	113	125	0.002	0.001	< 0.01	254	< 0.01	0.055	0.082	DRY	0.002
Lead	D	mg/L	Result	< 0.0200	0.248	0.0003	< 0.0002	< 0.0020	0.284	< 0.0020	0.0046	< 0.0010	DRY	0.0003
Magnesium	D	mg/L	Result	4610	4400	174	196	1130	7430	2740	124	925	DRY	124
Manganese	D	mg/L	Result	426	411	0.0023	0.0014	7.89	710	79.8	0.0262	37.1	DRY	< 0.0005
Mercury	D	mg/L	Result	< 0.0100	< 0.0100	< 0.0001	< 0.0001	< 0.0010	< 0.0100	< 0.0010	0.0002	< 0.0005	DRY	< 0.0001
Potassium	D	mg/L	Result	13.5	13.3	5.3	3.0	16.7	15.5	28.1	3.8	9.9	DRY	3.9
Sodium	D	mg/L	Result	1730	1710	273	151	317	210	842	225	428	DRY	383
Zinc	D	mg/L	Result	3650	3860	0.012	0.025	0.441	8280	102	0.971	246	DRY	0.017
Ammonia as N	N	mg/L	Result	0.9	1.0	< 0.1	< 0.1	< 0.1	7.6	0.1	< 0.1	0.3	DRY	< 0.1
Benzene	N	mg/L	Result	< 0.001	< 0.001	< 0.001	< 0.001	< 0.001	< 0.001	< 0.001	< 0.001	< 0.001	DRY	< 0.001
Chloride	N	mg/L	Result	944	944	708	69.4	338	111	286	579	468	DRY	585
Dissolved Oxygen - Field	N	mg/L	Result	4.099489	0.2427779	2.255823	1.401518	0.2323225	0.2298258	0.2349589	1.653093	0.4262995	DRY	4.914041
Electrical Conductivity @ 25°C	N	µS/cm	Result	28000	27600	3400	2450	8420	36800	17400	2380	7850	DRY	3320
Ethylbenzene	N	mg/L	Result	< 0.002	< 0.002	< 0.002	< 0.002	< 0.002	< 0.002	< 0.002	< 0.002	< 0.002	DRY	< 0.002
Fluoride	N	mg/L	Result	0.52	0.47	0.65	1.08	0.38	0.18	0.38	0.21	0.31	DRY	0.91
Nitrate as N	N	mg/L	Result	0.93	1.02	1.42	15.6	< 0.05	0.40	< 0.05	0.34	< 0.05	DRY	4.49
Nitrite as N	N	mg/L	Result	0.06	< 0.01	< 0.01	< 0.01	< 0.01	< 0.01	< 0.01	< 0.01	< 0.01	DRY	0.01
pH - Field	N	pH Unit	Result	4.29564	3.805726	6.886908	6.911365	6.41452	3.242515	5.752264	5.272153	3.520846	DRY	6.914077
Phenols (Total)	N	mg/L	Result	< 0.05	< 0.05	< 0.05	< 0.05	< 0.05	< 0.05	< 0.05	< 0.05	< 0.05	DRY	< 0.05
Sulfate	N	mg/L	Result	27600	27800	65.1	1120	5550	62000	14800	191	6070	DRY	69.4
Sum of polycyclic aromatic hydrocarbons	N	mg/L	Result	< 0.0005	< 0.0005	< 0.0005	< 0.0005	< 0.0005	< 0.0005	< 0.0005	< 0.0005	< 0.0005	DRY	< 0.0005
Toluene	N	mg/L	Result	< 0.002	< 0.002	< 0.002	< 0.002	< 0.002	< 0.002	< 0.002	< 0.002	< 0.002	DRY	< 0.002
Total Alkalinity as CaCO3	N	mg/L	Result	< 1	< 1	632	259	449	< 1	308	28	< 1	DRY	566
Total Dissolved Solids 180°C	N	mg/L	Result	44000	48900	2150	2200	9590	100000	26200	1440	9350	DRY	1860
Total Organic Carbon (as NPOC)	N	mg/L	Result	8	10	2	2	7	25	10	< 1	3	DRY	2
Total Xylenes	N	mg/L	Result	< 0.002	< 0.002	< 0.002	< 0.002	< 0.002	< 0.002	< 0.002	< 0.002	< 0.002	DRY	< 0.002
Aluminium	T	mg/L	Result	332	391	0.04	0.04	< 0.21	2770	0.50	0.14	39.6	DRY	0.03
Arsenic	T	mg/L	Result	0.116	0.13	< 0.001	< 0.001	< 0.01	0.225	< 0.01	0.001	0.006	DRY	< 0.001
Barium	T	mg/L	Result	< 0.0525	< 0.0525	0.0271	0.0029	0.0198	< 0.0525	0.0209	0.0348	0.0027	DRY	0.0801
Cadmium	T	mg/L	Result	22.9	24.1	0.00011	0.00024	0.00446	41.2	0.0107	0.00282	0.171	DRY	0.00012
Calcium	T	mg/L	Result	474	454	151	170	505	521	433	10.3	211	DRY	98.2
Chromium	T	mg/L	Result	< 0.210	< 0.210	< 0.002	< 0.002	< 0.021	0.213	< 0.021	< 0.002	< 0.010	DRY	< 0.002
Cobalt	T	mg/L	Result	12.7	13.7	< 0.0002	< 0.0002	0.0078	28.9	0.861	0.0245	1.19	DRY	< 0.0002
Copper	T	mg/L	Result	120	135	0.002	0.002	< 0.01	272	0.036	0.062	0.086	DRY	0.003
Hexavalent Chromium	T	mg/L	Result	< 0.01	< 0.01	< 0.01	< 0.01	< 0.01	< 0.01	< 0.01	< 0.01	< 0.01	DRY	< 0.01
Lead	T	mg/L	Result	< 0.0210	0.266	0.0005	0.0003	0.0066	0.32	0.0395	0.0049	0.0038	DRY	0.0005
Magnesium	T	mg/L	Result	5020	4590	190	211	1140	8070	2710	120	884	DRY	126
Manganese	T	mg/L	Result	453	446	0.0027	0.0021	8.41	755	76.1	0.0285	38.2	DRY	0.0006
Mercury	T	mg/L	Result	< 0.0105	< 0.0105	< 0.0001	< 0.0001	< 0.0010	< 0.0105	< 0.0010	< 0.0001	< 0.0005	DRY	< 0.0001
Potassium	T	mg/L	Result	< 10.5	< 10.5	5.7	3.2	16.2	11.2	28.8	4.1	11.6	DRY	4.1
Sodium	T	mg/L	Result	1880	1790	290	161	320	226	843	239	492	DRY	405
Zinc	T	mg/L	Result	3990	4050	0.013	0.036	0.481	8980	101	1.02	284	DRY	0.017
Water Level Depth	N	mbtoc	Result	0.65	0.76	2.06	6.51	0	2.08	2.76	10.63	6.6	DRY	3.64

Analyte	FRACTION	Unit	Location	100	105	109	115	TSF4	WM300
			Sample Date	3/07/2025	3/07/2025	2/07/2025	3/07/2025	2/07/2025	15/07/2025
			Lab Report	CA2503991	CA2503991	CA2503991	CA2503991	CA2503991	CA2504298
Aluminium	D	mg/L	Result	0.10	0.04	0.05	0.04	25.5	17.6
Arsenic	D	mg/L	Result	< 0.001	< 0.001	< 0.001	< 0.001	0.012	0.003
Barium	D	mg/L	Result	0.0185	0.0469	0.0362	0.0220	0.0051	0.0198
Cadmium	D	mg/L	Result	0.00762	0.00105	0.0112	0.00039	0.942	0.517
Calcium	D	mg/L	Result	14.6	207	44.5	206	432	134
Chromium	D	mg/L	Result	< 0.002	< 0.002	< 0.002	< 0.002	0.018	0.006
Cobalt	D	mg/L	Result	0.0003	0.0003	< 0.0002	0.0003	0.601	0.102
Copper	D	mg/L	Result	0.009	0.007	0.032	0.002	2.94	12.5
Lead	D	mg/L	Result	< 0.0002	< 0.0002	0.0003	< 0.0002	2.45	0.616
Magnesium	D	mg/L	Result	44.8	236	58.4	335	322	77.1
Manganese	D	mg/L	Result	0.0247	0.0313	0.0035	0.0351	22.9	2.32
Mercury	D	mg/L	Result	< 0.0001	< 0.0001	< 0.0001	< 0.0001	< 0.0005	< 0.0001
Potassium	D	mg/L	Result	3.4	7.5	4.0	6.7	38.9	7.1
Sodium	D	mg/L	Result	54.9	226	156	267	300	109
Zinc	D	mg/L	Result	2.12	0.650	1.44	0.101	210	144
Ammonia as N	N	mg/L	Result	< 0.1	< 0.1	< 0.1	< 0.1	16.9	5.7
Chloride	N	mg/L	Result	74.4	657	220	543	291	178
Dissolved Oxygen - Field	N	mg/L	Result	8.304049	7.547486	9.057695	8.647934	8.712711	9.119404
Electrical Conductivity @ 25°C	N	µS/cm	Result	734	3650	1040	4110	5780	2420
Fluoride	N	mg/L	Result	0.31	0.28	0.36	0.37	0.59	1.77
Nitrate as N	N	mg/L	Result	< 0.05	< 0.05	0.05	< 0.05	14.3	7.09
Nitrite as N	N	mg/L	Result	< 0.01	< 0.01	< 0.01	< 0.01	< 0.01	< 0.01
pH - Field	N	pH Unit	Result	7.542379	6.732342	7.012919	7.145878	3.833729	3.687437
Redox Potential	N	mV	Result	352	339	389	327	387	484
Sulfate	N	mg/L	Result	141	602	194	1120	3060	1000
Total Alkalinity as CaCO3	N	mg/L	Result	44	200	143	294	< 1	< 1
Total Dissolved Solids 180°C	N	mg/L	Result	460	2580	879	3120	5600	2190
Total Organic Carbon (as NPOC)	N	mg/L	Result	4	17	12	12	12	6
Aluminium	T	mg/L	Result	0.32	0.05	0.15	0.06	31.2	19.3
Arsenic	T	mg/L	Result	< 0.001	< 0.001	< 0.001	< 0.001	0.072	0.005
Barium	T	mg/L	Result	0.0195	0.0495	0.0384	0.0230	0.31	0.0273
Cadmium	T	mg/L	Result	0.00800	0.00118	0.0121	0.00043	0.912	0.518
Calcium	T	mg/L	Result	15.5	220	46.4	217	457	136
Chromium	T	mg/L	Result	< 0.002	< 0.002	< 0.002	< 0.002	0.032	0.008
Cobalt	T	mg/L	Result	0.0004	0.0003	< 0.0002	0.0003	0.582	0.1
Copper	T	mg/L	Result	0.011	0.008	0.035	0.002	4.27	12.4
Lead	T	mg/L	Result	0.0012	0.0004	0.0010	< 0.0002	4.33	0.681
Magnesium	T	mg/L	Result	47.5	252	61.2	359	347	81.6
Manganese	T	mg/L	Result	0.0256	0.0330	0.0045	0.0369	21.7	2.3
Mercury	T	mg/L	Result	< 0.0001	< 0.0001	< 0.0001	< 0.0001	< 0.0005	< 0.0001
Potassium	T	mg/L	Result	3.5	7.5	4.1	6.9	40.3	10.6
Sodium	T	mg/L	Result	56.6	236	160	277	312	115
Zinc	T	mg/L	Result	2.25	0.690	1.52	0.105	209	150