



**DURATEC**  
AUSTRALIA

# HERITAGE BUILDING CONSERVATION



EXTENDING THE  
LIFE OF YOUR ASSETS

Heritage buildings are unique pieces of our history, so remediation work needs to be performed in a way that maintains their heritage value.

Duratec has extensive experience in the remediation of heritage buildings and we apply a sympathetic approach to the works, mindful of the overarching principles of conservation, which depending on the project scope, will include a combination of rehabilitation, restoration and reconstruction.

Front cover: Old Treasury Building Refurbishment and City of Subiaco Memorial Clock Tower Restoration



Dumas House Facade & Podium Restoration



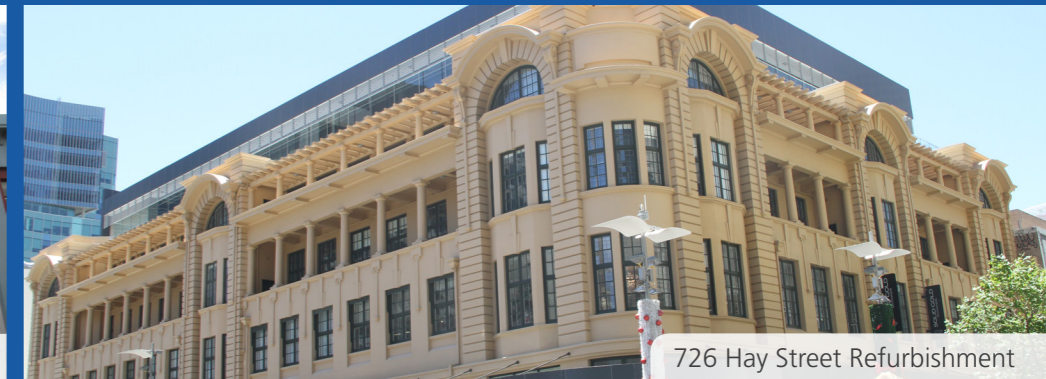
Geelong T & G Building Facade Repairs



WA Institute Deaf Education Concrete Repairs



Customs House Fremantle Facade Repairs



726 Hay Street Refurbishment



Sir Charles Gairdner Hospital Facade Remediation

## HERITAGE AWARDS



## LOCATIONS

Our offices in Perth, Darwin, Sydney, Melbourne, Brisbane, Adelaide and Tasmania, provide Australia-wide facade refurbishment services to commercial and government buildings assets.

## HERITAGE REMEDIATION PROGRAMS

Heritage building conservation aims for a high level of authenticity, accurately replicating historic materials as much as possible, and ideally, only using modern techniques in a concealed manner, where they will not compromise the heritage values of the building.

In approaching heritage remediation, Duratec focuses on the overarching principles of conservation, which depending on the project scope, will include a combination of rehabilitation, restoration and reconstruction.

**Rehabilitation:** heritage building materials and character defining features are protected, as they are in preservation treatment, but rehabilitation allows for alterations to the basic structure with modern building materials, so that it can continue to be useful for modern day purposes.

**Restoration:** includes preservation, leaving as much material untouched as possible in its original form, using original materials and returning the structure to the historically accurate condition of its construction period.

**Reconstruction:** allows the recreation of missing building elements in all new, appropriate materials, as long as they closely resemble the original ones.

## EARLY CONTRACTOR INVOLVEMENT

An essential aspect of successful heritage restoration is Early Contractor Involvement (ECI) - working collaboratively with stakeholders, heritage architects and lead consultants to enable clients to harness engineering and construction know-how and innovative ideas at an early stage.

Duratec embraces ECI and can provide initial surveys and trials to identify latent conditions and enable sample finishes to be developed and acceptance criteria established.

ECI enables a thorough understanding of the expected project outcomes and also allows pricing of the works to be performed with a higher degree of certainty of scope, while mitigating many of the project's risks.

## PROJECT OUTCOMES

Duratec understands that right from the start, key project outcomes need to be well defined and these include:

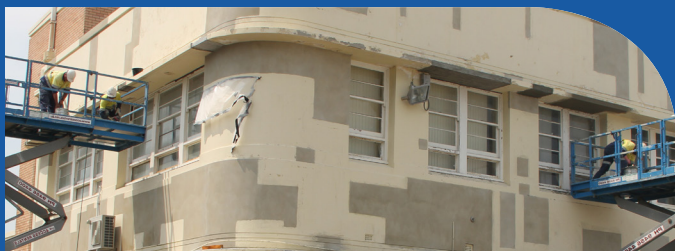
- Extent of rehabilitation, restoration and reconstruction
- Requirements in terms of materials permitted to be used
- Expected standards of surface finish, colour and texture
- Life expectancy and long-term durability requirements
- Structural upgrading expectations
- Limitations of site and building use during the works
- Project duration
- Value for money
- High level of safety compliance



Fremantle Artillery Barracks Balcony Remediation



Brickwork



Concrete repairs



Waterproofing



Hazardous material removal



Protective coatings



Structural strengthening



Rendering



Architectural feature repairs

## DURATEC AUSTRALIA

ABN 94 141 614 075

**PERTH HEAD OFFICE**  
108 Motivation Dr  
Wangara WA 6065  
T 08 6267 2370

**KALGOORLIE**  
Lot 33 Yarri Rd  
Parkeston WA 6433  
T 08 9021 5277

**KARRATHA**  
1/3890 Coolawanyah Rd  
Karratha WA 6714  
T 08 9185 6077

**PORT HEDLAND**  
11 Pinga St  
Port Hedland WA 6721  
T 08 9185 6077

**DARWIN**  
30 Muramats Rd  
East Arm NT 0828  
T 08 8901 7760

**BRISBANE**  
3/58 Frederick St  
Northgate QLD 4013  
T 07 3088 7570

**SYDNEY**  
59/7-9 Percy St  
Auburn NSW 2144  
T 02 8203 3860

**MELBOURNE**  
93-97 Remington Dr  
Dandenong Sth VIC 3175  
T 03 8787 5865

**ADELAIDE**  
8 Walsh Av  
St Marys SA 5042  
T 08 7071 3550

**TASMANIA**  
4/16-18 Goodman Ct  
Invermay TAS 7248  
T 03 6338 7900

[WWW.DURATECAUSTRALIA.COM.AU](http://WWW.DURATECAUSTRALIA.COM.AU)