



ENERGY

AGL TORRENS ISLAND TORRENS ISLAND STATION B CHIMNEY STACK INSPECTION

INFORMATION

PROJECT NUMBER
60.25.0025

LOCATION
South Australia

CONTRACT DURATION
Apr 17 - May 17

VALUE
\$151,438

CLIENT CONTACT
John Biddiss
08 8240 9226

SERVICE OFFERING

Condition assessment
Technical testing

PROJECT SUMMARY

Torrens Island is located in the Port River Estuary, 15km north-west of Adelaide. The 160m chimney stack at AGL’s Torrens Island Power Station was constructed in 1975.

Duratec’s Specialist Access Division was engaged to undertake an inspection of the external reinforced concrete windshield and internal brick lining of the chimney stack via rope access to record and photograph the type, extent and location of all defects.

SCOPE OF WORKS

Internal inspection:

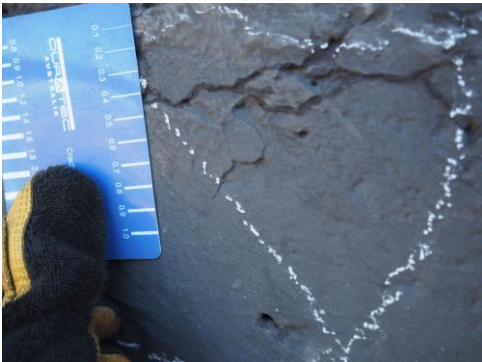
- Degradation to brickwork and mortar.
- Overall condition survey.

External inspection and works:

- Concrete cover meter survey.
- Compressive strength testing.
- Concrete core sample extraction.
- Carbonation and chloride testing and analysis.
- Investigation of concrete delamination/spalling and condition of exposed reinforcement steel.
- Survey of access system, aircraft warning lights and lightning protection system.
- Ultrasonic thickness testing of top cap.
- Replacement of the height safety system.
- Electrical system inspection, lighting change out and cable retention.



Internal condition survey by rope access



Concrete windshield delamination survey.

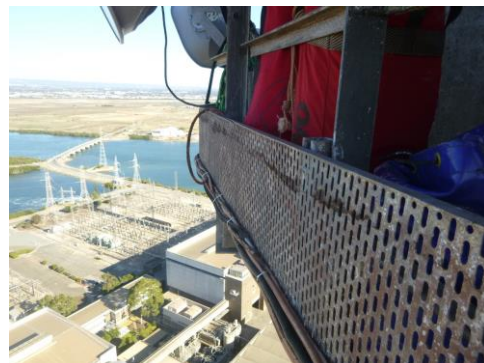
AGL TORRENS ISLAND TORRENS ISLAND STATION B CHIMNEY STACK INSPECTION

HIGHLIGHTS

- The site findings and risks, including laboratory test results were submitted in a detailed report to the client.
- Duratec has a three-year remediation contract at the power station.



Internal gas seal inspection by removal and replacement of brick lining.



Electrical cable retention.



Internal condition survey to quantify defects and provide pricing for repair.



Reinforcement cover meter survey.



Internal condition survey to quantify defects and provide pricing for repair.