

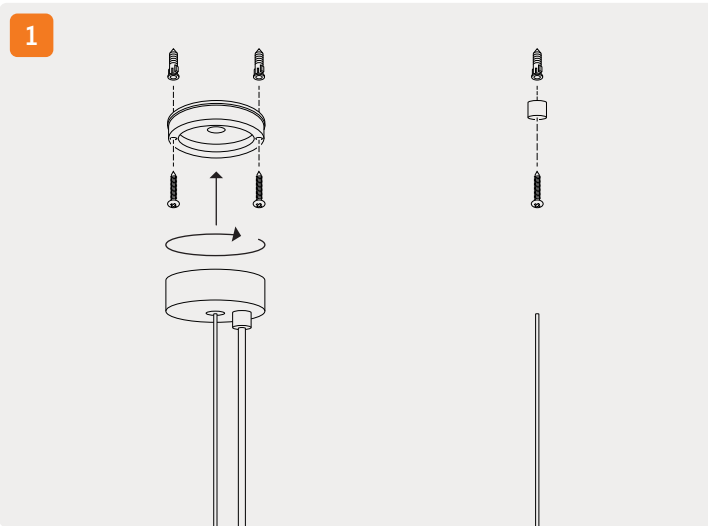
⚠ CAUTION Light Fitting Must Be Installed By A Licensed Electrician

Please ensure to read instructions correctly for the installation of the fitting provided. Failure to do so will result in a void of warranty and compromises the safety of luminaire.

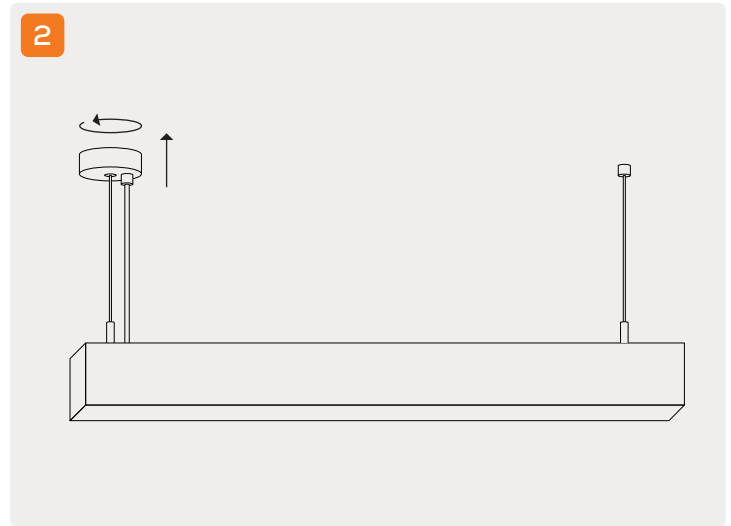
FAZE are not liable for warranties when luminaire is damaged by incorrect installation. The installation of the luminaires must be in accordance with the national safety regulations.

Please refer to FAZE's General Terms & Conditions for more information concerning the installation and warranty of our products.

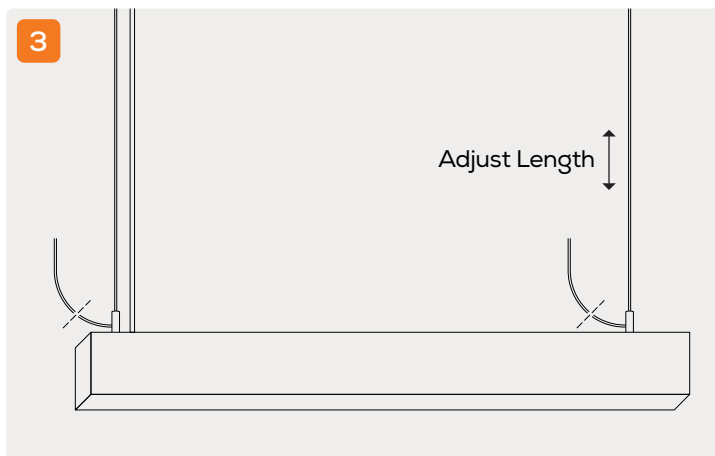
Suspension Installation Instructions



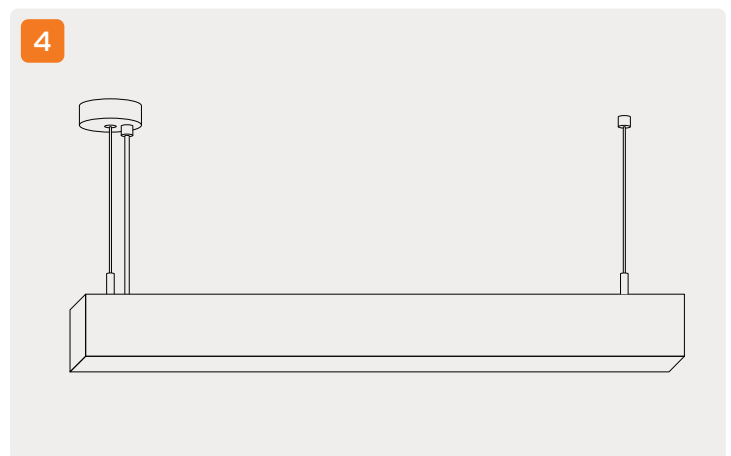
Twist the canopy clockwise to disconnect the base from the canopy.
Mount the base to the surface.
Secure the suspension cable to luminaire & canopy base.



Twist the canopy counter-clockwise to re-attach canopy to the base.



Adjust suspension height to desired length, then cut off any excess cable.
Max cable length is 2m.



LED 15W | 30W | 45W | 60W

Category Linear

Warranty 5 Years

Material Powder Coated Aluminium

CRI 90+

IP Rating 40



For warranty information please visit fazelight.com
For all other queries, please call us on 1300 438 609

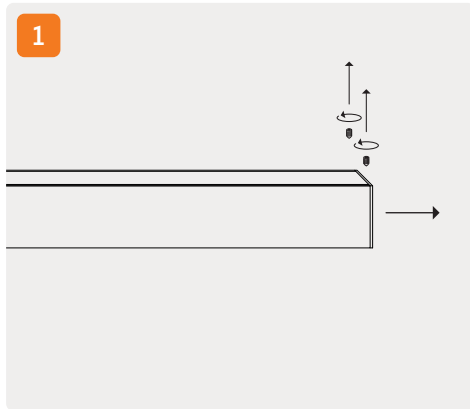
⚠ CAUTION Light Fitting Must Be Installed By A Licensed Electrician

Please ensure to read instructions correctly for the installation of the fitting provided. Failure to do so will result in a void of warranty and compromises the safety of luminaire.

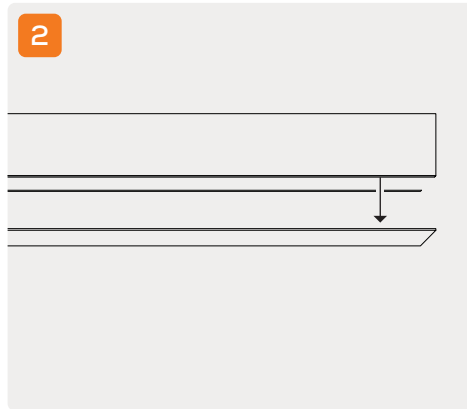
FAZE are not liable for warranties when luminaire is damaged by incorrect installation. The installation of the luminaires must be in accordance with the national safety regulations.

Please refer to FAZE's General Terms & Conditions for more information concerning the installation and warranty of our products.

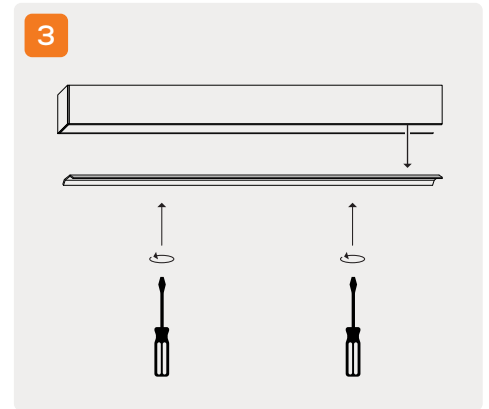
Surface Mounted Installation Instructions



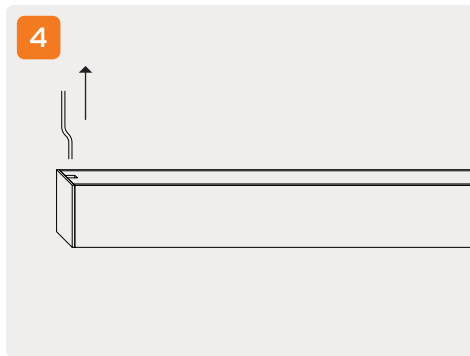
Use allen key to remove the end cap.



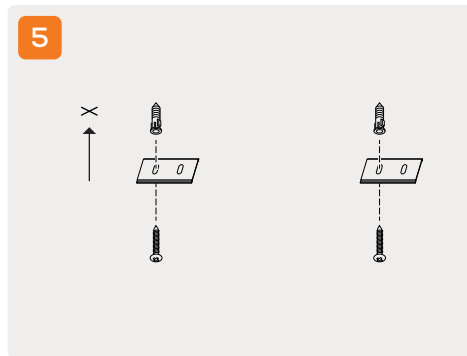
Remove diffuser.



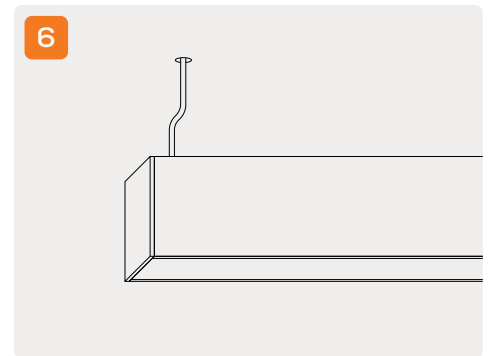
Remove heatsink by unscrewing in 2 locations shown above.



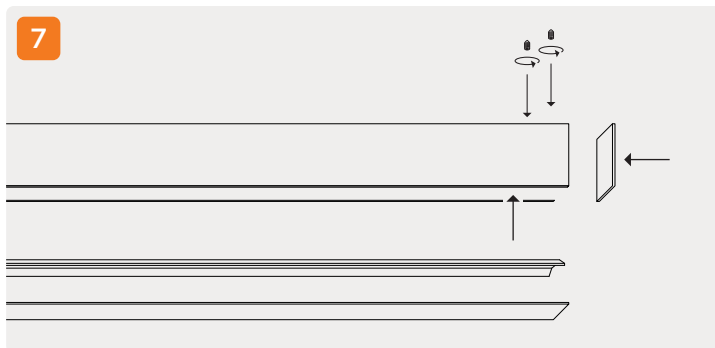
Detach and remove the suspension cables.



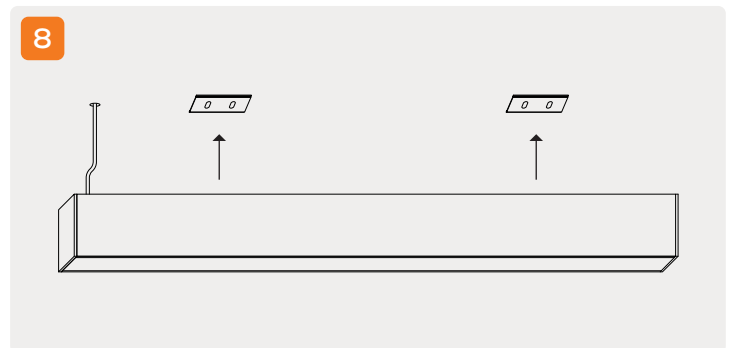
Secure surface mount clips to surface. Create hole to bring power cables through.



Pull power cables through hole and connect power.



Re-attach heatsink, diffuser, and end cap by following steps 1-3 in reverse.



Attach fitting to surface mounted clips.

LED 15W | 30W | 45W | 60W
Category Linear

Warranty 5 Years
Material Powder Coated Aluminium

CRI 90+
IP Rating 40



For warranty information please visit fazelight.com
For all other queries, please call us on 1300 438 609

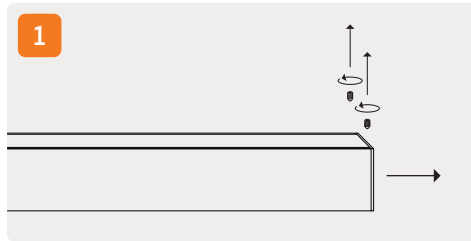
⚠ CAUTION Light Fitting Must Be Installed By A Licensed Electrician

Please ensure to read instructions correctly for the installation of the fitting provided. Failure to do so will result in a void of warranty and compromises the safety of luminaire.

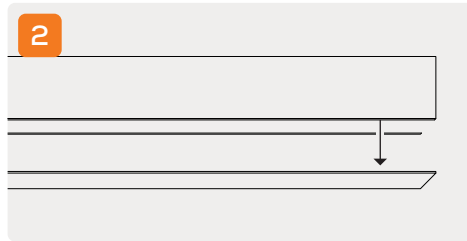
FAZE are not liable for warranties when luminaire is damaged by incorrect installation. The installation of the luminaires must be in accordance with the national safety regulations.

Please refer to FAZE's General Terms & Conditions for more information concerning the installation and warranty of our products.

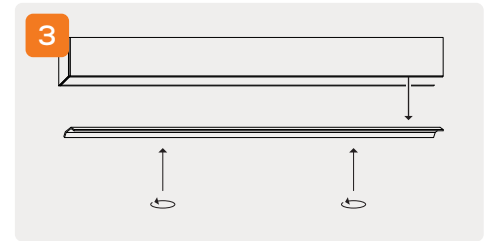
Pre-Joining Installation Instructions



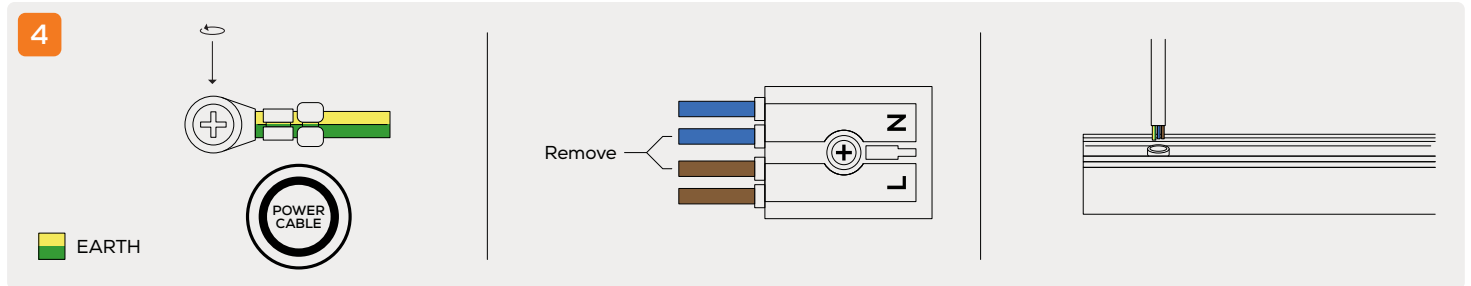
Use allen key to remove the end cap.



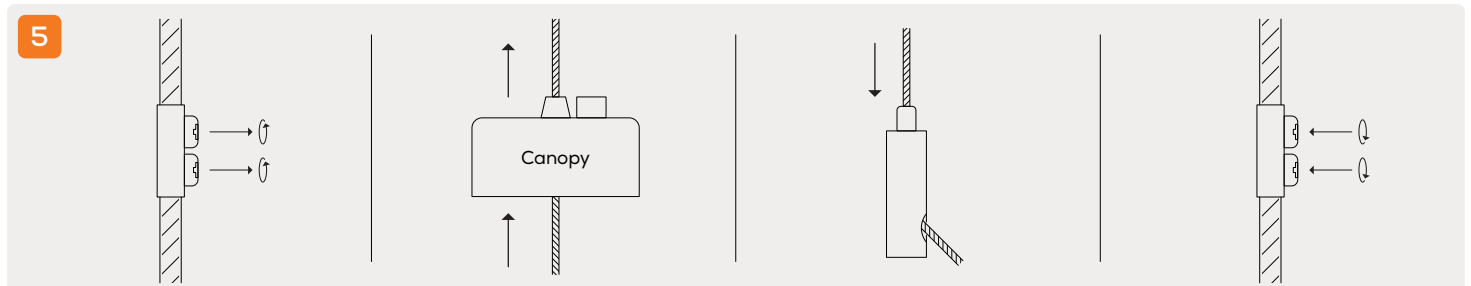
Remove diffuser.



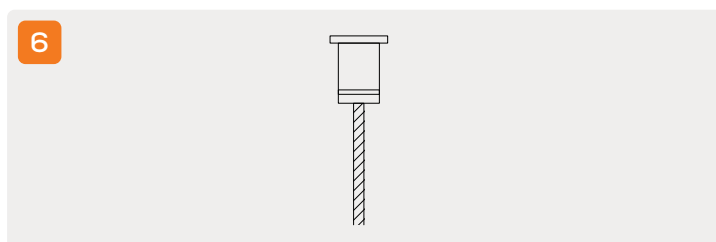
Remove heatsink by unscrewing in 2 locations shown above.



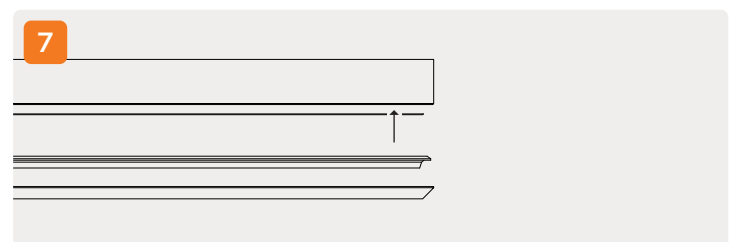
Disconnect the power cable from the fitting. Disconnect the earth connection from the fitting. Disconnect the remaining cabling to the power cable from the wiring terminal. Pull the cable through to remove from the fitting.



Remove the canopy from the suspension wire. Remove the non-slip bracket from the wire. Feed the wire back through the canopy top to remove the wire from the canopy. Feed the wire back through the suspension clip on the fitting. Screw the non-slip bracket back onto the wire.



Add the ceiling suspension clip onto the suspension wire.



Re-attach the heatsink and diffuser. The fitting is now ready for the joining process.

LED 15W | 30W | 45W | 60W

Category Linear

Warranty 5 Years

Material Powder Coated Aluminium

CRI 90+

IP Rating 40



For warranty information please visit fazelight.com
For all other queries, please call us on 1300 438 609

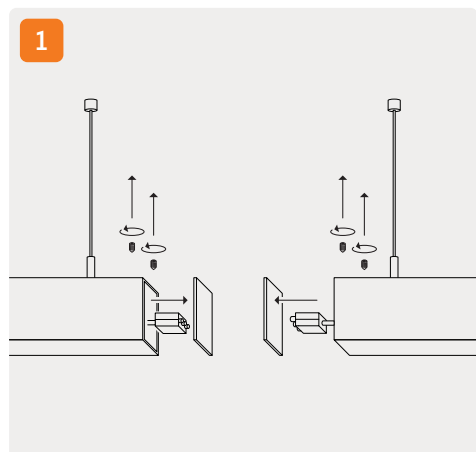
⚠ CAUTION Light Fitting Must Be Installed By A Licensed Electrician

Please ensure to read instructions correctly for the installation of the fitting provided. Failure to do so will result in a void of warranty and compromises the safety of luminaire.

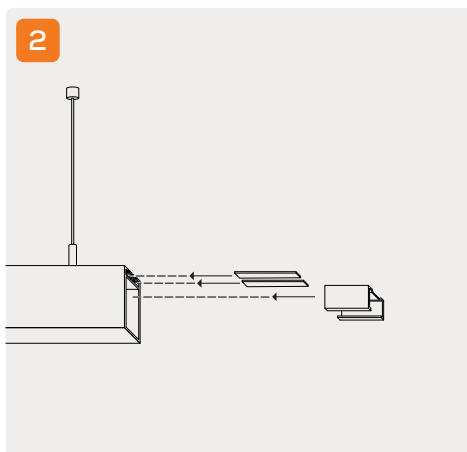
FAZE are not liable for warranties when luminaire is damaged by incorrect installation. The installation of the luminaires must be in accordance with the national safety regulations.

Please refer to FAZE's General Terms & Conditions for more information concerning the installation and warranty of our products.

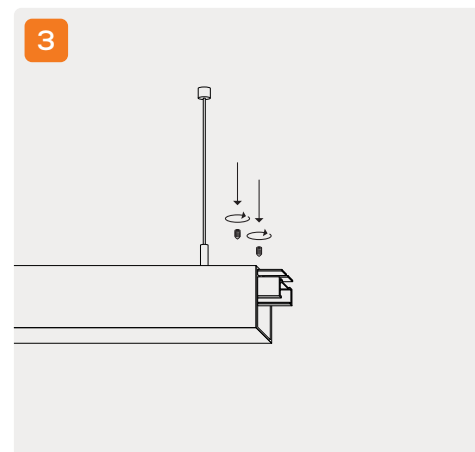
Joining Installation Instructions



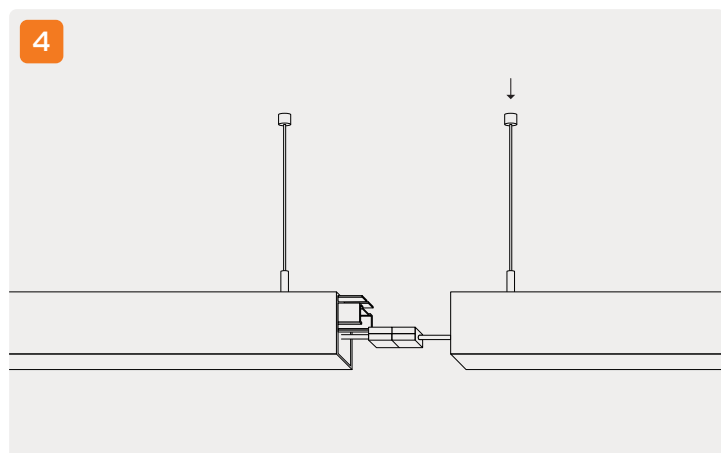
Remove screws shown in diagram. Pull off end caps, and pull out adapters.



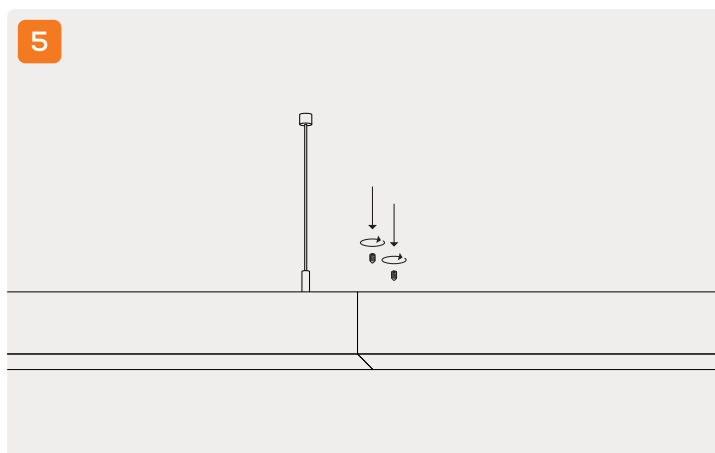
Slide in the 3 aluminium joiners into Fitting 1.



Lock aluminium joiners in place with the screws from Fitting 1.



Connect adapters from both fittings.
Wire suspension marked above is optional.



Slide fittings together, and lock aluminium joiners into place on Fitting 2.

Please Note: Maximum length is 9.6m before an extra power feed is required.

LED 15W | 30W | 45W | 60W
Category Linear

Warranty 5 Years
Material Powder Coated Aluminium

CRI 90+
IP Rating 40



For warranty information please visit fazelight.com
For all other queries, please call us on 1300 438 609