



Our brand new FAZE FLOW SIDE is a high quality, flexible extruded silicone strip. It is ideal for use along ceilings, walls, cabinetry & stairways; both indoors and outdoors. This strip will ensure a seamless combination of style and functionality to any project!

FEATURES

- + Side emitting, for curving around surfaces where you require indirect light
- + UV & chemical resistant
- + Precise cutting options
- + High CRI - excellent colour rendering
- + Compatible with Casambi devices
- + IP67 - suitable for outdoor applications
- + Front, side and bottom cable entry connection options



GENERAL SPECIFICATIONS

LED	5W per meter
Lumens	150 lm/m
Colour	<input type="checkbox"/> 3000K, Warm White <input type="checkbox"/> 4000K, Cool White
Efficacy	30 lm/w
Beam	120°
Material	Extruded Silicone
CRI	90+
Finish	White
IP	67
Bending Diameter	240mm
Colour Deviation	SDCM ≤2
Warranty	5 Years
Voltage	DC 24V

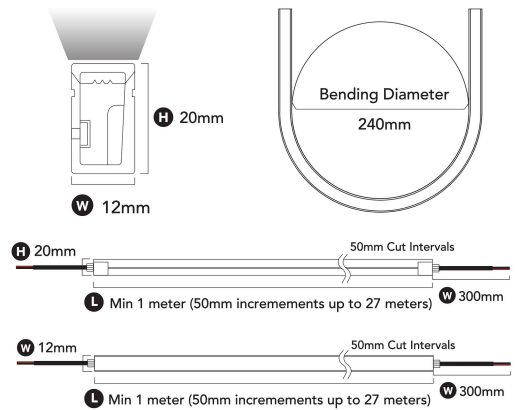
PROJECT DETAILS

PROJECT: _____

TYPE: _____

NOTES: _____

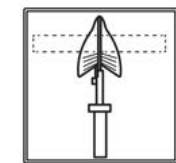
DIMENSIONS (mm)



PRODUCT CODE

3000K	10-FL1220S053
4000K	10-FL1220S054

CUTTING LENGTHS



50mm increments up until 27m
**Please allow 9mm extra on each side for the end caps*

COMPATIBLE CASAMBI DEVICES

BasicDIM 24V Wireless 4ch	71-CAS24V
BasicDIM Driver 24V 150W	71-CAS24V150
BasicDIM Driver 24V 100W	71-CAS24V100
BasicDIM Driver 24V 60W	71-CAS24V60
BasicDIM Driver 24V 35W	71-CAS24V35

FLOW SIDE ACCESSORIES



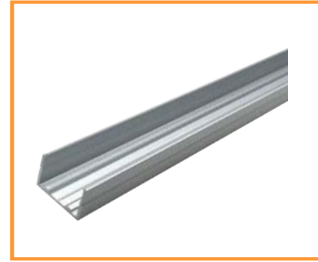
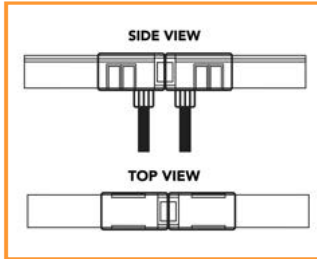
SIDE CABLE ENTRY

Code: 10-FL1220PSE

Dimensions: 26.5 (L) x 17 (W) x 24.2 (H) mm

Finish: Transparent

Cable Entry: Side

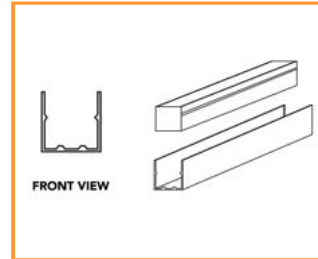


ALUMINIUM PROFILE

Code: 10-FL1220P1

Dimensions: 1000 (L) x 17.3 (W) x 21.1 (H) mm

Material: Aluminium



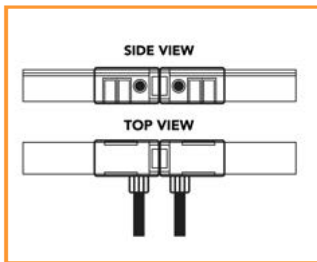
BOTTOM CABLE ENTRY

Code: 10-FL1220PBE

Dimensions: 26.5 (L) x 17 (W) x 24.2 (H) mm

Finish: Transparent

Cable Entry: Bottom



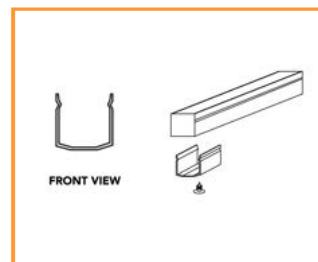
MOUNTING CLIPS (set of 2)

Code: 10-FL1220MC

Dimensions: 20 (L) x 12.6 (W) x 18.9 (H) mm

Material: Stainless Steel

Each meter requires 2x clips and 2x screws



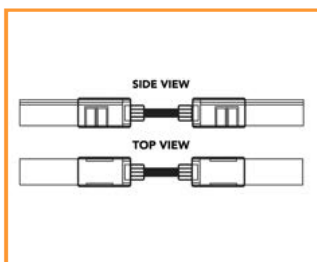
STRAIGHT CABLE ENTRY

Code: 10-FL1220PFE

Dimensions: 26.5 (L) x 17 (W) x 24.2 (H) mm

Finish: Transparent

Cable Entry: Front



END CAP IP67

Code: 10-FL1220EC

Dimensions: 26.5 (L) x 17 (W) x 24.2 (H) mm

Material: Stainless Steel

