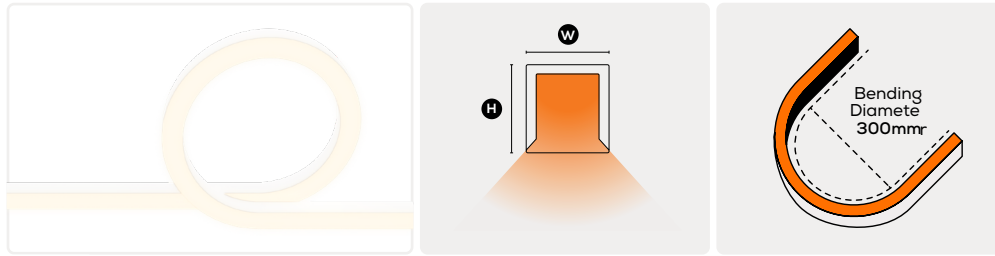


FLOW SIDE **G2**

Bringing LED strip lighting to the next level, Flow is an advanced silicone strip that incorporates more flex and longevity than ever before. Flow Side is perfect for designs that require a horizontal bend, either left or right. With the ability to curve up to 300mm.

- Side emitting – For curving around surface, requiring indirect light.
- UV & chemical resistant.
- 5W, 10W, 15W options.
- High CRI – Bringing out the colours in the space.
IP 67 – Suitable for outdoor & wet applications.
- Front, side, and bottom cable entry connection options.



DIMENSIONS **W** 16 mm **H** 17 mm

LUMINAIRE OPTIONS

LED & LUMENS OPTIONS (3000K | 4000K)

5W PER METER
294lm | 294lm

10W PER METER
537lm | 548lm

15W PER METER
824lm | 824lm

GENERAL SPECIFICATIONS

LED **LUMENS** 3000K | 4000K

5W p/m 294lm | 294lm

10W p/m 537lm | 548lm

15W p/m 824lm | 824lm

EFFICACY P/METER Up To 59 lm/w

COLOUR 3000K, Warm White
4000K, Cool White

MATERIAL Extruded Silicone

FINISH White

BEAM 120°

CRI 90+

IP 67

COLOUR DEVIATION SDCM ≤2

BENDING DIAMETER 300mm

LIFETIME > 54,000hrs L70B10

WARRANTY 5 Years

CUTTING LENGTH & MAX RUN LENGTH

LED **CUTTING LENGTHS** **MAX RUN LENGTH** (Integrated | DIY)

5W 50mm 30m | 15m

10W 50mm 20m | 10m

15W 50mm 15m | 6.6m

Allow for 9mm extra on each side for end caps.

PROJECT DETAILS

PROJECT

TYPE

NOTES

PRODUCT CODES

5W 3000K, 120° **10-FL1617S053**

4000K, 120° **10-FL1617S054**

10W 3000K, 120° **10-FL1617S103**

4000K, 120° **10-FL1617S104**

15W 3000K, 120° **10-FL1617S153**

4000K, 120° **10-FL1617S154**

COMPATIBLE CASAMBI DEVICES

BasicDIM 24V Wireless 4ch **71-CAS24V**

BasicDIM Driver 24V 150W **71-CAS24V150**

BasicDIM Driver 24V 100W **71-CAS24V100**

BasicDIM Driver 24V 60W **71-CAS24V60**

BasicDIM Driver 24V 35W **71-CAS24V35**



FLOW SIDE G2 ACCESSORIES

SIDE CABLE ENTRY



Side Cable, Right Entry	10-FL1617SPSRE
Side Cable, Left Entry	10-FL1617SPSLE
DIMENSIONS	N/A
CABLE ENTRY	Side

REAR CABLE ENTRY



Rear Cable, Right Entry	10-FL1617SPRER
Rear Cable, Left Entry	10-FL1617SPREL
DIMENSIONS	N/A
CABLE ENTRY	Rear

STRAIGHT CABLE ENTRY



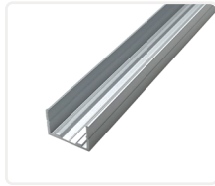
Straight Cable, Right Entry	10-FL1617SPFER
Straight Cable, Left Entry	10-FL1617SPFEL
DIMENSIONS	N/A
CABLE ENTRY	Front

END CAP



End Cap	10-FL1617SEC
DIMENSIONS	26.5 (L) x 17 (W) 24.2 x (H) mm
MATERIAL	Stainless Steel
IP	67

ALUMINIUM PROFILE



Aluminium Profile	10-FL1617P2
DIMENSIONS	2000 (L) x 20.2 (W) x 20.8 (H) mm
MATERIAL	Aluminium
FINISH	Silver

CURVED ALUMINIUM PROFILE



Curved Aluminium Profile	10-SP1617CR1M
DIMENSIONS	1000 (L) x 20.2 (W) x 20.8 (H) mm
MATERIAL	Aluminium
FINISH	Silver

MOUNTING CLIPS (SET OF 4)



Mounting Clips	10-FL1617MC
DIMENSIONS	20 (L) x 16.6 (W) x 12.4 (H) mm
MATERIAL	Aluminium
FINISH	Silver
NOTES	Each meter requires 4 clips and 4 screws