

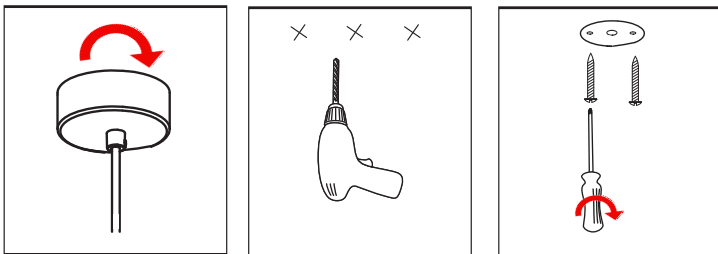
**⚠ CAUTION - light fitting must be installed by a licensed electrician.**

- Please ensure to read instructions correctly for the installation of the fitting provided. Failure to do so will result in a void of warranty and compromises the safety of luminaire.
- Radiant Lighting are not liable for warranties when luminaire is damaged by incorrect installation. The installation of the luminaires must be in accordance with the national safety regulations.

Please refer to Radiant Lighting's General Terms & Conditions for more information concerning the installation and warranty of our products.

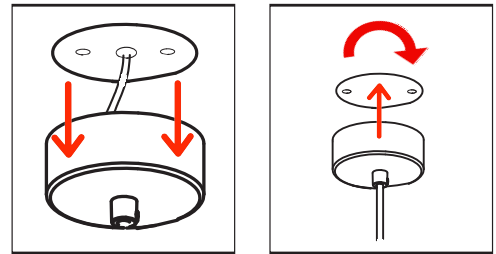
### Suspension Instructions

#### STEP 1



- 1 a) Half twist canopy open
- b) Drill two holes into ceiling for mounting and one for cables
- c) Screw the base plate into the ceiling

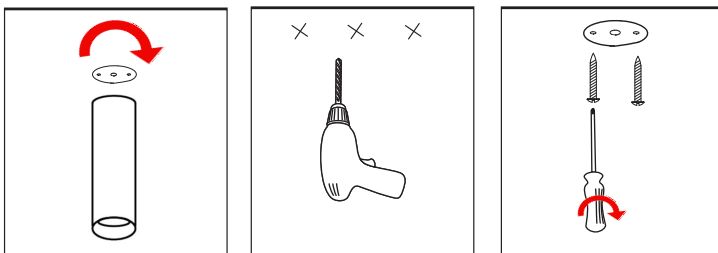
#### STEP 2



- 2 a) Pull cable through the ceiling mount and connect to fitting cables
- b) Half turn twist the canopy into the base plate in the ceiling

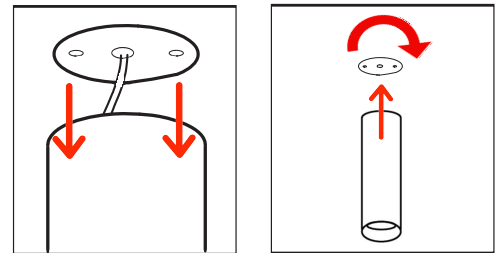
### Surface Mount Instructions

#### STEP 1



- 1 a) Half twist base plate open from fitting
- b) Drill two holes into ceiling for mounting and one for cables
- c) Screw base plate into ceiling

#### STEP 2



- 2 a) Pull cable through the ceiling mount and connect to fitting cables
- b) Half turn twist the fitting to the base plate in the ceiling

<b>Category</b>	6W / 12W	<b>CRI</b>	92+
<b>Power</b>	Ceiling / Suspension	<b>Material</b>	Powder Coat Aluminium
<b>IP Rating</b>	20	<b>Warranty</b>	5 Years



For warranty information please visit [radiantlighting.com.au/warranty](http://radiantlighting.com.au/warranty)

For all other queries, please call us on 1300 438 609