

⚠ CAUTION Light Fitting Must Be Installed By A Licensed Electrician

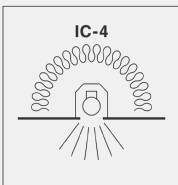
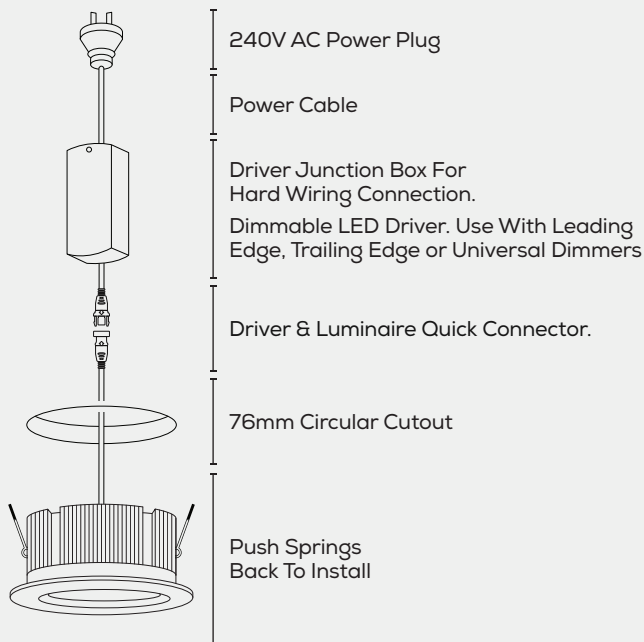
Please ensure to read instructions correctly for the installation of the fitting provided. Failure to do so will result in a void of warranty and compromises the safety of luminaire.

FAZE are not liable for warranties when luminaire is damaged by incorrect installation. The installation of the luminaires must be in accordance with the national safety regulations.

If the external flexible cable or cord of the luminaire is damaged, it shall be exclusively replaced by the manufacturer or his service agent or similar qualified person in order to avoid a hazard.

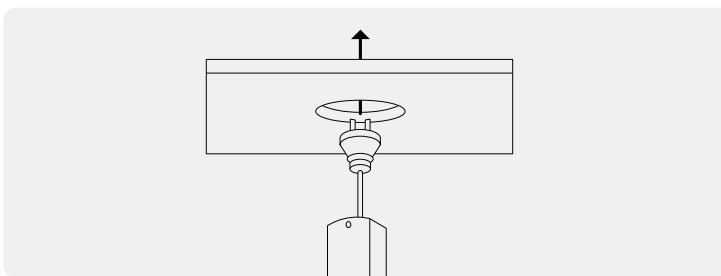
When using C-Bus, use universal or trailing edge dimming modules.

Please refer to FAZE's General Terms & Conditions for more information concerning the installation and warranty of our products.

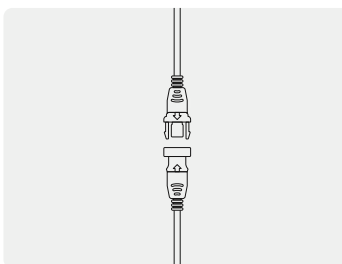


Suitable for residential or commercial use in Australia and New Zealand. Fitting may be abutted and covered according to AS/NZS 60598.2.2:2016, however for optimal efficiency we advise that the luminaire is not covered when installing.

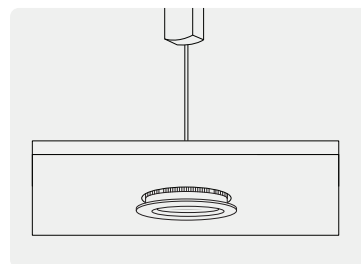
1 Create a 76mm circular cutout.



2 Connect the driver to the mains power socket - located in the ceiling cavity. Ensure the control gear is placed above any insulation.



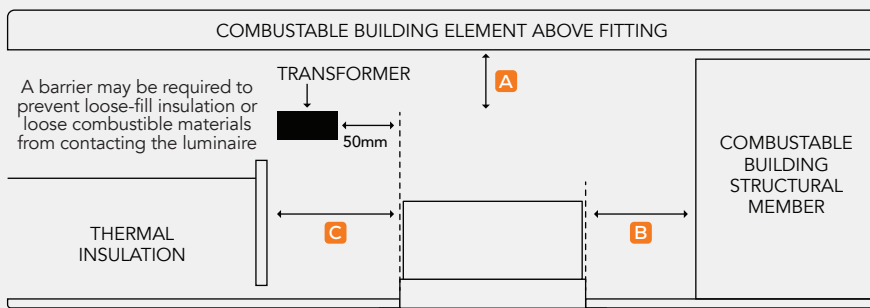
3 Connect driver and luminaire together.



4 Pull back springs and load unit into ceiling.

WARNING – RISK OF OVERHEATING OR FIRE IF THE CLEARANCE DISTANCES ARE COMPROMISED.

Minimum Clearance For Luminaire. In Accordance with AS/NZS 60598.2.2:2016



- A** Height Clearance To Building Element (HCB) 0mm
- B** Side Clearance To Building Element (SCB) 0mm
- C** Side Clearance To Insulation (SCI) 0mm

LED	10W	Warranty	5 Years	CRI	92+
Category	Downlight	Material	Powder Coated Aluminium	IP Rating	20 (Ceiling Space) 44 (Fascia)



For warranty information please visit fazelight.com
For all other queries, please call us on 1300 438 609