

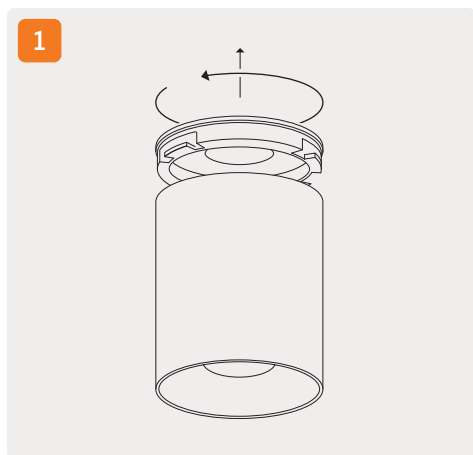
**⚠ CAUTION** Light Fitting Must Be Installed By A Licensed Electrician

Please ensure to read instructions correctly for the installation of the fitting provided. Failure to do so will result in a void of warranty and compromises the safety of luminaire.

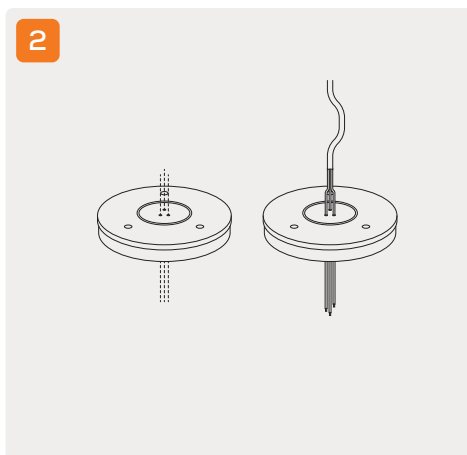
FAZE are not liable for warranties when luminaire is damaged by incorrect installation. The installation of the luminaires must be in accordance with the national safety regulations.

Please refer to FAZE's General Terms & Conditions for more information concerning the installation and warranty of our products.

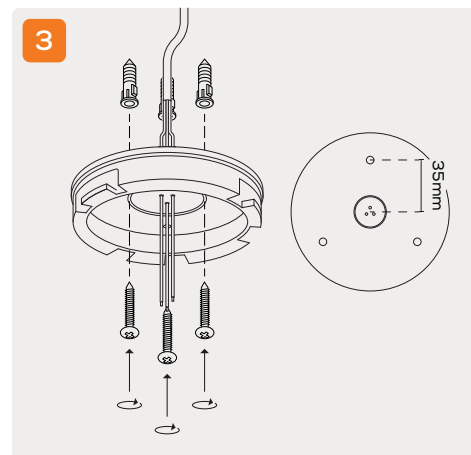
## Installation Instructions



Twist base counter-clockwise to unlock.



Puncture the 3 holes in the rubber centre and feed the power cables through separately to ensure IP rating is maintained.



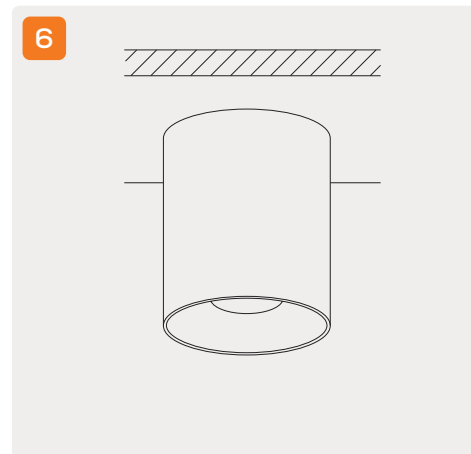
Mount base to ceiling.



Connect power.



Twist fitting counter-clockwise to secure to base.



**LED** 40W  
**Category** Surface Mounted

**Warranty** 5 Years  
**Material** Powder Coated Aluminium

**CRI** 92+  
**IP Rating** 44



For warranty information please visit [fazelight.com](http://fazelight.com)  
 For all other queries, please call us on 1300 438 609