

# Tool Boxes

Product Catalogue



**GLOBAL**  
**INDUSTRIAL**

# Tool boxes



## TOOL BOXES

We have a large range of ute tool boxes to suit any application. No matter what ute model or type you have, we will have a box for you. Our boxes are made with quality and durability in mind, incorporating durable drawer slides, stainless steel t-handles and rubber seals that are resistant to dust and weather. These boxes are the tradesperson's preferred choice.

Our range includes tool boxes for both under and above the tray, allowing the serious tradie to use space effectively. Our range also includes jobsite boxes, drawbar boxes and small generator boxes.





## Under tray tool boxes

MODEL	TB0030 / TB0040	TB0042 / TB0043	TBA0130 / TBA0135
MOUNTING SIDE	Left / Right		
COLOUR	Black	White	Aluminium smooth mill plate
DIMENSIONS	660L/510L x 260D x 405mmH		
DOOR OPENING	Door opens away from wheel, complete with rubber seals		
WEIGHT	15kg	9kg	
CONSTRUCTION	1.5mm steel	2mm aluminium	



## Tapered under tray tool boxes

MODEL	TB0050 / TB0052	TB0055 / TB0057	TBA0110 / TBA0112
MOUNTING SIDE	Left / Right		
COLOUR	Black	White	Aluminium smooth mill plate
DIMENSIONS	750L x 260D x 405/260mmH		
DOOR OPENING	Drop down door (hinged form bottom of box), complete with rubber seals		
WEIGHT	15kg	9kg	
CONSTRUCTION	1.5mm steel	2mm aluminium	



## Under tray drawer

MODEL	TBP0093	TBP0094
DIMENSIONS	750/800W x 1500D x 175mmH	
WEIGHT	78kg	85kg
DRAWER CAPACITY	50kg UDL	40kg UDL
LOCKING POINTS	One stainless steel T-handle	
CONSTRUCTION	Aluminium front plate (800mm wide) & Galvanised steel body (750mm wide)	



## Gullwing tool boxes

MODEL	TBG0010
COLOUR	White
DIMENSIONS	1730L x 500D x 430mmH
WEIGHT	49kg
LOCKING POINTS	Two stainless steel T-handle (one on each door)
DOOR STYLE	Two gullwing type lids
CONSTRUCTION	1.5mm powder coated steel





## 705 series – steel half open tool boxes

MODEL	TBP0161W	TBP0162W	TBP0163W
COLOUR	White		
DIMENSIONS	900L x 500D x 705mmH	1220L x 500D x 705mmH	1450L x 500D x 705mmH
WEIGHT	45kg	54kg	63kg
LOCKING POINTS	One stainless steel t-Handle	Two stainless steel t-Handles	
DOOR STYLE	Half open		
INTERNAL	1 x internal removable shelf		
CONSTRUCTION	1.5mm powder coated steel		



## 705 series – steel full open tool boxes

MODEL	TBP0176W	TBP0177W	TBP0178W
COLOUR	White		
DIMENSIONS	900L x 500D x 705mmH	1220L x 500D x 705mmH	1450L x 500D x 705mmH
WEIGHT	49kg	59kg	69kg
LOCKING POINTS	One stainless steel t-Handle	Two stainless steel t-Handles	
DOOR STYLE	Full open		
INTERNAL	2 X internal removable shelves		
CONSTRUCTION	1.5mm powder coated steel		



## 705 series - steel mine boxes

MODEL	TBP0180	TBP0182
COLOUR	White	
DIMENSIONS	1220L x 500D x 705mmH	1450L x 500D x 705mmH
WEIGHT	79kg	94kg
DRAWERS	Four internal half drawers	
DRAWER CAPACITY	20kgs UDL	
SHELVES	Internal shelf the full width of the box, but separated in the centre	
LOCKING POINTS	Two stainless steel t-Handles on the front door and spring-loaded latches for the internal drawers	
DOOR STYLE	Full open	



## 850 series - steel half open tool box

MODEL	TBP0275	TBP0280	TBP0285	TBP0290
COLOUR	White			
DIMENSIONS	1000L x 616D x 850mmH	1280L x 616D x 850mmH	1565L x 616D x 850mmH	1850L x 616D x 850mmH
WEIGHT	60kg	73kg	83kg	95kg
LOCKING POINTS	One stainless steel T-handle per door	Two stainless steel T-handle per door		
DOOR STYLE	Half open			
INTERNAL	1 x Internal removable shelf			
CONSTRUCTION	1.5mm power coated steel			
FORK ENTRY BARS	Three 50 × 50mm bars with anchor points			



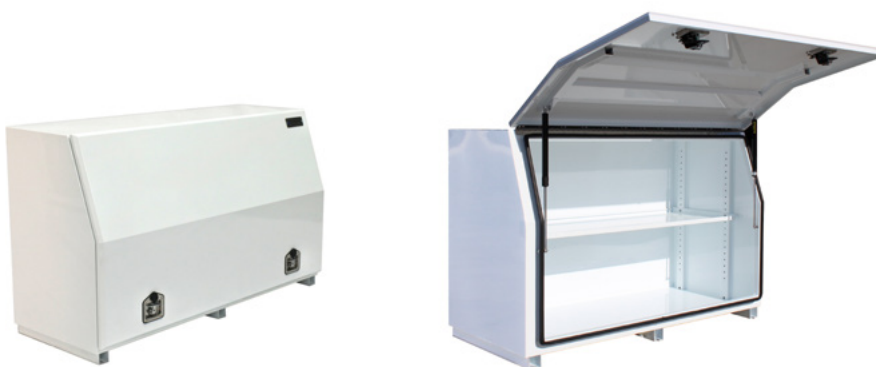
## 850 series – steel mine boxes

MODEL	TBP0186	TBP0188	TBP0190	TBP0192
COLOUR	White			
DIMENSIONS	1000L x 616D x 850mmH	1280L x 616D x 850mmH	1565L x 616D x 850mmH	1850L x 616D x 850mmH
WEIGHT	99kg	103kg	115kg	147kg
DRAWERS	Four internal half drawers			
DRAWER CAPACITY	20kgs UDL			
SHELVES	Internal shelf the full width of the box, but separated in the centre			
LOCKING POINTS	One stainless steel t-Handle on the front door and spring-loaded latches for the internal drawers	Two stainless steel t-Handles on the front door and spring-loaded latches for the internal drawers		
DOOR STYLE	Full open			
CONSTRUCTION	1.5mm powder coated steel			
FORK ENTRY BARS	Three 50x50mm bars with anchor points			



## 850 Series - SBS (Side by Side) 4 Drawer

MODEL	TBP0250	TBP0255	TBP0260	TBP0265
COLOUR	White			
DIMENSIONS	1000L x 616D x 850mmH	1280L x 616D x 850mmH	1565L x 616D x 850mmH	1850L x 616D x 850mmH
WEIGHT	95kg	113kg	129kg	142kg
DRAWERS	Four internal half drawers			
DRAWER CAPACITY	20kgs			
LOCKING POINTS	One stainless steel T-handle for the 1000mmL box		Two stainless steel T-handles for the 1280, 1565, and 1850mm box	
ADJUSTABLE SHELF	YES			
DOOR STYLE	Full open			
CONSTRUCTION	1.5mm Powder coated steel			
FORK ENTRY BARS	Three 50×50mm bars with anchor points			



## 850 series - steel full open tool boxes

MODEL	TBP0200	TBP0205	TBP0210	TBP0215
COLOUR	White			
DIMENSIONS	1000L x 616D x 850mmH	1280L x 616D x 850mmH	1565L x 616D x 850mmH	1850L x 616D x 850mmH
WEIGHT	63kg	77kg	90kg	103kg
LOCKING POINTS	One stainless steel T-handle for the 1000mmL box		Two stainless steel T-handles for the 1280, 1565, and 1850mm box	
DOOR STYLE	Full open			
CONSTRUCTION	1.5mm Powder coated steel			
FORK ENTRY BARS	Three 50x50mm bars with anchor points			



## 950 series - 8 drawer steel mine boxes

MODEL	TBN0680	TBN0690
COLOUR	White	
DIMENSIONS	1280L x 616D x 950mmH	1565L x 616D x 950mmH
WEIGHT	152kg	175kg
DRAWERS	Eight internal half drawers	
DRAWER CAPACITY	20kgs	
LOCKING POINTS	One stainless steel T-handle for the 1000mmL box	Two stainless steel T-handles for the 1280, 1565, and 1850mm box
DOOR STYLE	Full open	
CONSTRUCTION	1.5mm Powder coated steel	
FORK ENTRY BARS	Three 50x50mm bars with anchor points	





## 950 series – steel mine boxes

MODEL	TBN0610	TBN0620	TBN0630
COLOUR	White		
DIMENSIONS	1280L x 616D x 950mmH	1565L x 616D x 950mmH	1850L x 616D x 950mmH
WEIGHT	115kg	132kg	162kg
DRAWERS	Four internal half drawers		
DRAWER CAPACITY	20kgs UDL		
SHELVES	Internal shelf the full width of the box, but separated in the centre		
LOCKING POINTS	Two stainless steel t-Handles on the front door and spring-loaded latches for the internal drawers		
DOOR STYLE	Full open		
CONSTRUCTION	1.5mm powder coated steel		
FORK ENTRY BARS	Three 50x50mm bars with anchor points		



## 950 series – steel four drawer tool boxes

MODEL	TBN0420	TBN0450
COLOUR	White	
DIMENSIONS	1565L x 616D x 950H	1850L x 616D x 950H
WEIGHT	161kg	176kg
DRAWERS	Four fully sealed half-length drawers with heavy duty sliders	
DRAWER CAPACITY	40kgs UDL	
LOCKING POINTS	Two stainless steel t-Handles on the front door and heavy duty drop pins for the drawers	
DOOR STYLE	Half open	
INTERNAL	One internal removable shelf	
CONSTRUCTION	1.5mm powder coated steel	
FORK ENTRY BARS	Three 50x50mm bars with anchor points	



## 950 series – steel full open tool boxes

MODEL	TBN0145	TBN0155	TBN0165	TBN0175
COLOUR	White			
DIMENSIONS	1000L x 616D x 950mmH	1280L x 616D x 950mmH	1565L x 616D x 950mmH	1850L x 616D x 950mmH
WEIGHT	69kg	79kg	88kg	100kg
LOCKING POINTS	One stainless steel t-Handle	Two stainless steel t-Handles		
DOOR STYLE	Full open			
INTERNAL	One internal removable shelf			
CONSTRUCTION	1.5mm powder coated steel			
FORK ENTRY BARS	Three 50×50mm bars with anchor points			



## 950 series - truck boxes

MODEL	TBP0100	TBP0105
COLOUR	White	
DIMENSIONS	1280L x 616D x 950mmH	1565L x 616D x 950mmH
WEIGHT	97kg	112kg
LOCKING POINTS	Two stainless steel t-Handles	
DOOR STYLE	Full open	
INTERNAL	Vertically partitioned in the middle with two half-length shelves that can be adjusted in height	
CONSTRUCTION	1.5mm powder coated steel	
FORK ENTRY BARS	Three 50x50mm bars with anchor points	



## 850 series – ute canopies

MODEL	TBC0012	TBC0013	TBC0015	TBC0017	TBC0020	TBC0025
COLOUR	White	Black	White	Black	White	White
DIMENSIONS	1770L x 800D x 850mmH		1770L x 1200D x 850mmH		1770L x 1500D x 850mmH	1770L x 1800D x 850mmH
WEIGHT	126kg		146kg		183kg	205kg
LOCKING POINTS	One stainless steel T-handle per door		Two stainless steel T-handle per door			
DOOR STYLE	Full open					
INTERNAL	Full open space internally					
CONSTRUCTION	1.5mm powder coated steel					



## Truck underbody tool boxes

MODEL	TBP0157	TBP0158	TBP0097
COLOUR	Black		
DIMENSIONS	1000L x 500D x 500mmH	1000L x 500D x 500mmH	600L x 450D x 450mmH
WEIGHT	28kg		20kg
LOCKING POINTS	Two stainless steel t-handles		One stainless steel t-handle
DOOR STYLE	One fully opening front door	Two fully opening front doors	One fully opening front door
DOOR LANCE	Stainless steel lance to support door when fully open		
INTERNAL	Fully open internal space	Each side is separated with a vertical divider and comes with one internal shelf	Fully open internal space
CONSTRUCTION	1.5mm powder coated steel		



Steel job site tool boxes

MODEL	TB0095
COLOUR	Yellow
SIZE (INCHES)	48"
DIMENSIONS	1220L x 622D x 711mmH
WEIGHT	63kg
LOCKING POINTS	Two locking points (padlock not included)
DOOR STYLE	One fully opening door
CONSTRUCTION	1.5mm steel