



GLOBAL
INDUSTRIAL

Product Catalogue

2025

1300 76 26 86
GLOBALIND.COM.AU

Helping you get on with business

Established in 1976, Global Industrial has developed a strong client base across many industry sectors in Australia. We specialise in the wholesale and retail supply of commercial and industrial equipment, offering tailored storage solutions for small businesses, tradespeople, industrial and commercial operations, the mining sector, and domestic clients.

By sourcing products from a range of international suppliers and manufacturers, we can supply our customers with a multitude of quality products and storage solutions. We provide professional service and in-depth knowledge of the products that we sell.

Global's Mission Statement

To supply the greatest number of consumers with quality products at the lowest prices using exceptional customer service to satisfy their product needs.



Content

Pallet Racking

Zinc Coated Frames	7
Powder Coated Beams.....	7
Outdoor Racking.....	8
Hot Dipped Galvanised (HDG) Beams	8
Narrow Aisle Racking	10
Push Back Racking	10
Selective Pallet Racking	10
Drive In Racking	11
Vertical Racking	11
Cable Racking	11
Double Deep Racking.....	12
Carton Live Storage (CLS)	12
Double Deep Rails.....	12
Accessories	13
Mesh Backing Sheets.....	15



Cantilever Racking

C200 Cantilever	17
C305 Cantilever	17
Outdoor HDG Cantilever	18

Industrial Storage

Longspan Shelving	21
Longspan Accessories.....	22
Longspan Modular Workbench Accessories	22
2-Tier Rack Workbench	23
4-Tier Rack Workbench	23
2-Tier Longspan Workbench	23
4-Tier Longspan Workbench	23
Gondola Shelving	24
Galvanised Rivet Shelving.....	25
Rolled Upright Type (RUT) Shelving	25



Mezzanine Floors

Structural Mezzanine.....	27
APEX Racking Supported Floor	28
Clamp Style Handrail	29
Bollards.....	30
Staircases.....	30
Kick Rail.....	30
Sliding Gate	31
Personnel (Swing) Gate	31
Up & Over Gate	31

Office and Parts Storage

2-Door Cabinets	32
Utility Cabinets.....	32
Lockers	33
Small Parts Bins	33
52L Plastic Crate	33
Stackable Parts Bins	34
Parts Trays	34
Mobile Parts Trolley	35
Steel Louvre Panel & Square Punch Panel	35
Panel & Accessories.....	35



Materials Handling

Stackable Stillage	37
Collapsible Stillage Mesh Cage.....	37
Wire Cages for Pallets.....	38
Galvanised Mesh Cage	38
Castor Wheels	39

Toolboxes

Standard Under Tray Boxes	41
Tapered Under Tray Boxes.....	41
Truck Underbody - 600mm.....	42
Truck Underbody Single Door	42
Truck Underbody Double Door.....	42
Under Tray Trundle Drawer	43
Steel Job Site Box	43
Steel Gullwing.....	43
Steel Ute Canopy	44
Aluminium Dog Boxes	44
Aluminium Unistrut Canopy	45
Unistrut Canopy Accessories.....	45
850H Series - Aluminium Full Open	47
850H Series - Aluminium 4 Drawer Minebox.....	47
850H Series - Full Open	48
850H Series - Half Open	48
850H Series - Steel 4 Drawer Minebox	49
850H Series - Steel Side-by-Side 4 Drawer Minebox.....	49
850H Series - Steel 8 Drawer Minebox	50
950H Series - Steel Square Truck Box.....	50
950H Series - Full Open	51
950H Series - 4 Drawer Minebox	51
950H Series - 8 Drawer Minebox	51
705H Series - Full Open	52
705H Series - Half Open	52
705H Series - 4 Drawer Minebox	52
Spare Parts and Accessories	53

Pallet Racking



APEX pallet racking has been designed and engineered in Australia and complies with Australian Standard AS4084:2023. Selective pallet racking is the most common type of pallet racking used in Australia today. There are many variations of pallet racking such as drive-in, narrow aisle, double deep, archive, cable, vertical, tyre and carpet rack, all of which can be constructed with APEX components.

Zinc Coated Frames

Frames have been tested to be compliant to and exceed the requirements of AS4084:2023.

Several frame grades are available depending on the load required. These are identifiable with a unique stamping code on the upright post, which indicates the steel thickness and profile.

Frame Height	Post Section	Depth
914mm	90-15	610 838 1219mm
1219mm	90-15	610 838 1219mm
1829mm	90-15	610 838 1219mm
2438mm	90-15	610 838 1219mm
3048mm	90-15	610 838 1219mm
3658mm	90-15 90-20	610 838 1219mm
4267mm	90-15 90-20 90-25	610 838 1219mm
4877mm	90-15 90-20 90-25	610 838 1219mm
5486mm	90-15 90-20 90-25	610 838 1219mm
6096mm	90-15 90-20 90-25	610 838 1219mm
7315mm	90-15 90-20 90-25	838 1219mm

Powder Coated Beams

APEX powder coated orange box beams and open beams are designed to withstand a higher level of impact and to retain their shape better than some other types of beam sections on the market.

To the right are our standard sizes available off the floor. Please note that custom sizes can be made and ordered upon request.

Code	Beam Length	Beam Section	Connector	Load Capacity
PRB0914x080x40	914mm	80 x 40mm box	3pin	3000kgs
PRB1219x080x40	1219mm	80 x 40mm box	3pin	3000kgs
PRB1372x050x45	1372mm	50 x 45mm open beam	3pin	700kgs
PRB1372x080x40	1372mm	80 x 40mm	3pin	2700kgs
PRB1524x080x40	1524mm	80 x 40mm	3pin	2420kgs
PRB1829x080x40	1829mm	80 x 40mm	3pin	2020kgs
PRB2134x080x40	2134mm	80 x 40mm	3pin	1790kgs
PRB2438x080x40	2438mm	80 x 40mm	3pin	1620kgs
PRB2591x050x45	2591mm	50 x 45mm open beam	3pin	400kgs
PRB2591x080x40	2591mm	80 x 40mm box	3pin	1550kgs
PRB2591x100x50	2591mm	100 x 50mm box	3pin	2400kgs
PRB2591x120x50	2591mm	120 x 50mm box	4pin	3150kgs
PRB2591x140x50	2591mm	140 x 50mm box	4pin	4000kgs
PRB2743x050x45	2743mm	50 x 45mm open beam	3pin	365kgs
PRB2743x080x40	2743mm	80 x 40mm box	3pin	1410kgs
PRB2743x100x50	2743mm	100 x 50mm box	3pin	2280kgs
PRB2743x120x50	2743mm	120 x 50mm box	4pin	3000kgs
PRB2743x140x50	2743mm	140 x 50mm box	4pin	3990kgs
PRB3048x120x50	3048mm	120 x 50mm box	4pin	2730kgs
PRB3353x120x50	3353mm	120 x 50mm box	4pin	2510kgs
PRB3658x140x50	3658mm	140 x 50mm box	4pin	2520kgs
PRB3810x140x50	3810mm	140 x 50mm box	4pin	2330kgs
PRB3810x160x50	3810mm	160x50mm box	4pin	3540kgs
PRB3962x160x50	3962mm	140 x 50mm box	4pin	3200kgs
PRB4267x140x50	4267mm	140 x 50mm box	4pin	2150kgs
PRB4877x140x50	4877mm	140 x 50mm box	4pin	1500kgs

Disclaimer: Beam loading capacities are subject to other factors such as frame grade, beam heights and seismic conditions etc.

Outdoor & Galvanised Racking

Galvanised pallet racking is specifically designed for outdoor environments, resisting corrosion and harsh weathering over time. It's also suitable for coolers and storage of chemicals.

All racking quoted by Global Industrial is wind and seismic tested based on the configuration and installation area.

When requesting a quote for outdoor pallet racking, it is important to provide as much information as possible upfront to accurately obtain a quote. Questions you may be asked include;

- Suburb and postcode of where the rack is going to be installed?
- Description of the surrounding area (i.e. industrial estate or farmland)?
- How far away are the nearest buildings or trees over 5m high?
- Height of the first and second beam levels?

From these answers we can determine the wind region and terrain. These can have a significant impact on the overall bay load rating.

“Wind Regions” refers to the classification of different regions of Australia, based on wind speeds and frequency of extreme weather events experienced in those areas. These regions are determined according to the Australian Standards AS1170.2:2021 Structural Design Actions.

“Terrain” is an important factor in building design and engineering. It relates to the areas exposure to wind as a result of the surrounding terrain.

Terrain 1.0 - Racking to be installed where there are no buildings or development, or trees within 200m (flat plane or field).

Terrain 2.0 - Racking to be installed no more than 200m from buildings in a rural area containing trees.

Terrain 2.5 - Racking to be installed no more than 100m from buildings in a well-developed industrial area or no more than 50m from buildings in a semi builtup area.

Terrain 3.0 - Racking to be installed no more than 5m from buildings in a well-developed industrial area.



Cross bracing (X-brace)



Concrete strip footings

Hot Dipped Galvanised (HDG) Beams

Code	Beam Length	Beam Section	Connector	Load Capacity
PRBG1372x075x50	1372mm	75 x 50mm RHS	3pin	2000kgs
PRBG2591x075x50	2591mm	75 x 50mm RHS	3pin	1200kgs
PRBG2591x100x50	2591mm	100 x 50mm RHS	3pin	2170kgs
PRBG2591x125x50	2591mm	125 x 50mm RHS	4pin	3090kgs
PRBG2743x075x50	2743mm	75 x 50mm RHS	3pin	1090kgs
PRBG2743x100x50	2743mm	100 x 50mm RHS	3pin	2070kgs
PRBG2743x125x50	2743mm	125 x 50mm RHS	4pin	2940kgs

Disclaimer: Beam loading capacities are subject to other factors such as frame grade, beam heights and seismic conditions etc.





HDG racking



Outdoor installations



Internal HDG pallet racking



Outdoor installations



Cable drum rack



Narrow Aisle Racking

- Stock picker forklift truck.
- High density racking.
- FIFO principle (First in, First Out).
- All pallets can be retrieved from the racking independently.
- Aisles only required to be wide enough for the forklift to drive into as stock is retrieved perpendicular to the direction of the forklift.
- Commonly 3-3.5m wide aisle spacing ~ Check each model of forklift to confirm aisle width.
- Uses stock picker forklifts as opposed to counterbalance forklifts.
- More technically involved than traditional racking but can provide up to 70% increase in storage against the standard selective pallet racking depending on your space.



Push Back Racking

- No specialty handling equipment is needed. Standard reach or counterbalance forklifts can be used.
- High density racking.
- FILP Principle per level (First in, Last Out).
- Pick face/ front pallet is constantly full enabling shorter loading and unloading times.
- Best suited for storing the same product type in each lane, making it perfect for bulk inventory or fast turn stock.
- Maximum 5 pallets deep.
- Each pallet sits on its own trolley, which rests on slightly inclined support rails. When a new pallet is loaded, it pushes the pallet(s) already in place backward.
- Great alternative to double deep racking.
- Pallets should ideally weigh a maximum of 1200kg and be made of hardwood. If any other type of pallet is used, it's essential to inform us at the beginning of the quoting process.



Selective Pallet Racking

- Counterbalanced forklifts, reach forklifts and walkie stackers.
- Most used type of pallet racking.
- FIFO principle (First in, First Out).
- All pallets are retrieved from the rack independently.
- Configured in either single entry or back-to-back runs.
- Indoor and outdoor applications.
- Aisles are required to be wide enough for the forklifts turning circle. In most cases 4m-5m wide, but varies between models.
- Commonly between 2.4m and 7.3m high.
- Most flexible and common option for warehousing environments with highly flexible stock picking requirements.
- Cost effective, high-capacity storage.
- Wide range of compatible accessories.



Drive In Racking

- Counterbalanced or reach forklifts.
- Very high-density racking.
- Can be designed as single entry drive-in or drive-through systems.
- FILO (First in, Last Out) principle if positioned against a wall.
- FIFO (First in, First Out) principle if used as a drive-through system.
- Pallets can be retrieved only in the order they were entered into the racking, therefore meaning best suited for large pallet volumes of the same SKU.
- Arranged into cubic systems; X pallets wide, Y pallets deep and Z pallets high.
- Specialised components; Robust pallet guide rails, connectors, and heavy-duty floor brackets.
- Technical design process and minimal flexibility available after installation.
- Ideal for cold storage with high turnover and limited space.
- Designed for purpose.



Vertical Racking

- Designed to store long products that stand vertically on its end.
- Configured in either single entry or back-to-back.
- No machinery involved with loading and unloading, exclusively designed to be picked by hand.
- Maximum 500kgs loaded between each divider arm.
- Uses the same upright frames and beams of that in the selective pallet racking.
- Can be integrated with selective pallet racking systems within the same row of racking.
- Great for storing timber, PVC conduit, steel and aluminium.



Cable Racking

- Designed to store cable drums and spindles vertically.
- Minimising the need for additional floor space.

Front mounted:

- Lighter loads up to 500kgs.
- Maximum height of 4267mm high.
- Loads are designed to be pulled at no more than 1.5m from the front of the rack.
- Load forces must not exceed a pull load of 80kgs.

Centre mounted:

- Up to 1,800kgs per level.
- Maximum frame height of 7315mm high.
- Loads are designed to be pulled at no more than 1.5m from the front of the rack.

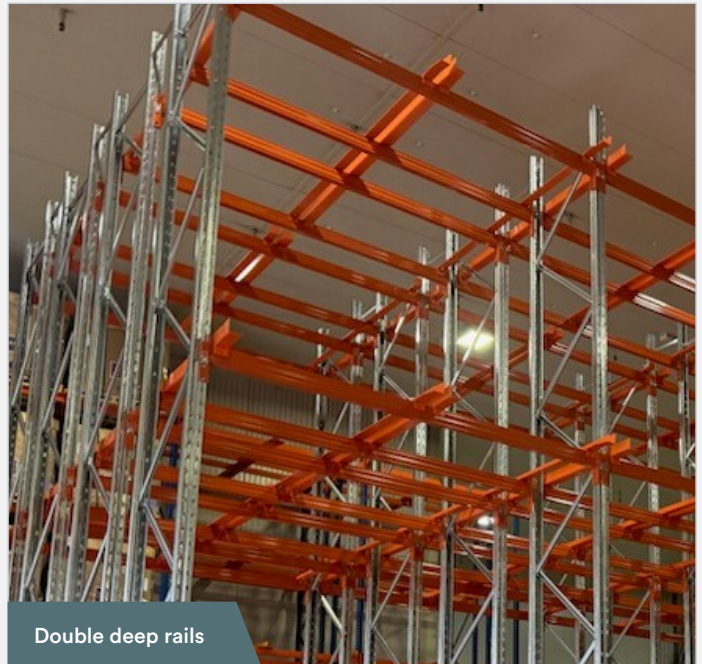


Double Deep Racking

- Double deep reach forklift truck.
- High density racking.
- FILO principle (First in, Last Out).
- 50% of product is immediately accessible.
- Aisles only required to be wide enough for a double deep reach truck to operate in, as stock is retrieved perpendicular to the direction of motion of the forklift. Often only requiring 3m-3.5m widths ~ Check each model as it will vary.
- Common heights from 3m and up 10m high depending on model of forklift.
- Stores two pallets deep per row (instead of one), effectively doubling storage capacity in the same footprint compared to selective racking.
- Offers a balance between increased capacity and relatively low investment compared to drive-in or automated systems.



Carton live storage (CLS)



Double deep rails

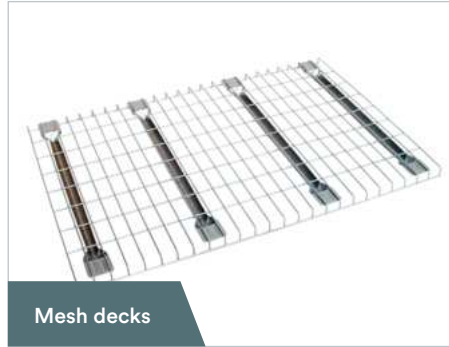
- Inclined roller tracks & optional dividers to create lanes.
- Minimizes handling, no need to move cartons to access rear stock.
- Reduces travel time as the picker stays in one zone whilst stock is replenished from the back.
- Modular and adjustable as it can be tailored to different carton sizes and weights.
- Suits 838mm + 430mm + 838mm racking setup.
- 50kg per roller strip.
- Easily integrated into existing systems.
- Rails provide stable, continuous support for pallets stored two-deep.
- Load rated up to 1500kg per pallet.
- Recommend for use at heights 4m and above or from the 3rd beam level.
- Suits 838mm frames paired with 430mm row spacers.
- Compatible with most major racking brands. Easily retrofitted to existing installations.
- Standard finish: powder-coated orange for high visibility. Hot-Dipped Galvanized (HDG) finish available on request.

Accessories



Particle board

Available in various lengths and depths to suit pallet racking workbenches and picking levels on selective rack.



Mesh decks

All rated to 1000kgs UDL per deck, available in 1250mm and 1350mm lengths and 609mm, 838mm, 1200mm and 1219mm depths.



Mesh divider

Compatible with mesh decks only and available to suit 838mm deep x 400mm high.



Splice kits

Available in various lengths and depths to suit pallet racking workbenches and picking levels on selective rack.



Beam safety clip

Designed to lock your pallet racking beams to your frames.



Board support

Available in 609mm, 838mm and 1219mm depths. Board supports provide additional structural support to particle board to avoid sagging due to moisture or continuous weight loads. Designed to maintain the load capacity of the beam, not increase the safe work load capacity.



Z-clips

These clips are placed over the beam on either side of the board. It helps reduce movement, such as slipping or sliding. Compatible with 40mm. Not compatible with 50mm beams.



Pallet support bars

Designed for non-standard pallet sizes and added support. Minimum of 2 supports required per pallet. 838mm deep can support 750kgs each and 1219mm can take up to 650kg each.



Fork entry bars

Allows forklift tines to access under an unpalletised load. Must be minimum of 2 per pallet. Available in 838mm and 1219mm deep.



Stand-off brace

Provides spacing between a racking frame and a post. This can be done so that it becomes a deeper structural frame, or to attach mesh backing. Available in 250mm, 838mm and 1219mm and 250mm K-type for outdoor mesh backing.



Row spacer

Also commonly known as row ties or frame ties. Used to provide adequate spacing between two back-to-back rows of selective pallet racking. Available in 430mm zinc, HDG or X-braced and 609mm zinc.



Vertical divider arms

Separates products into sections when being stored vertically. Only available in 600mm long and available to suit 80x40mm or 100x50mm beam sections.

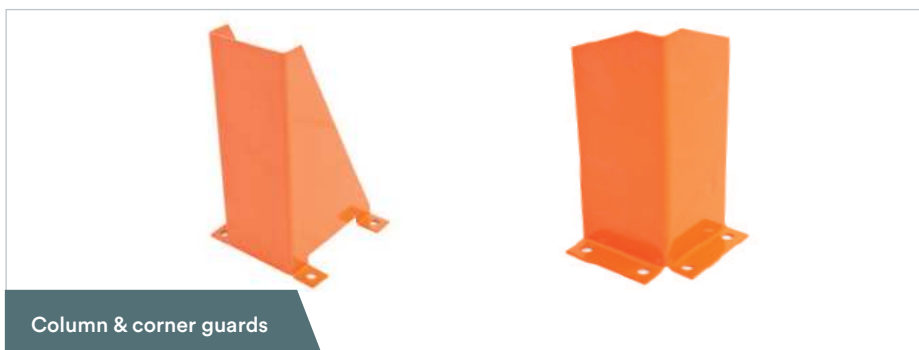


Footplates & shims

- a) RGGH122 – HDG Gusset footplate 8mm plate.
- b) RH0251 – Regular Internal Footplate 4mm plate.
- c) RH0255 – Heavy Duty Castor Footplate.
- d) RH0259 – Bench Footplate.
- e) RH0262 – Heavy Duty 6mm plate.
- f) RH0263 – Stiffened Heavy Duty 8mm plate.

Shims:

- g) RH0551 - Universal shim 1.5mm.
- h) RH0555 - Universal shim HDG 10mm.



Column & corner guards

Protects columns from low level fork and truck impact Available in 400mm to comply with AS4084:2023.



Hose hangers

Designed to sit over a 90/100/110/120 x 50mm beam section. Only available in 700mmL and have a maximum load of 60kg UDL along its length.



End wrap barriers

Designed to wrap around the end of rows to protect the frame. Available in powder coated and HDG: 1090mm, 1470mm, 2360mm and 2530mm lengths.



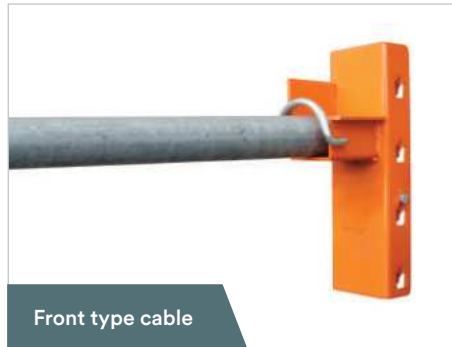
Post caps

Black caps to suit 90mm APEX posts and CLS. Great for workbenches.



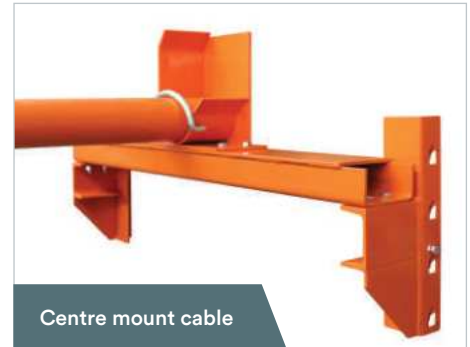
Coil/Drum supports

Designed to store large cylindrical objects such as coils, cable reels and 44-gallon drums on pallet racking in a flat horizontal position. The angled FTB supports are adjustable to help suit several different sizes. Available in either 838mm or 1219mm depths.



Front type cable

Designed to clip onto the post and mount a pipe, creating a spindle that can hold up to 500kg and allow easy access to cable drums.



Centre mount cable

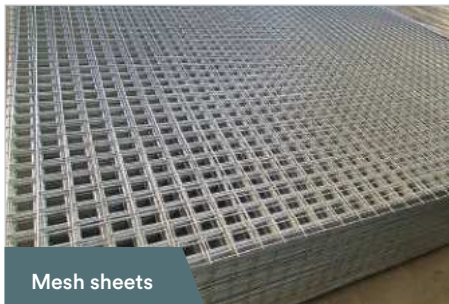
Designed to store heavy cable drums within selective pallet racking. Suits 838mm deep racking and maximum of 1800kg per set.

Mesh Backing Sheets

To comply with the Australian Standard AS4084:2023, fall protection must be installed on the back of pallet racking where there is potential for products stored at height to fall onto pedestrians or vehicles, such as forklifts.

Suitable for both indoor and outdoor applications.

Sheet size	2900mm x 2200mm
Mesh aperture	50 x 50mm
Wire Thickness	3mm
Finish	Zinc



Mesh sheets



Installed mesh backing



Installed mesh backing

Cantilever Racking



Features and benefits of Cantilever Racking

- Increased storage capacity compared to traditional industrial shelving.
- The ability to store items of varying lengths, as the arms and bracing can be adjusted to accommodate different sizes.
- Easy access to stored items, as there are no horizontal beams or supports to obstruct the view.
- The ability to store heavy items, as the long arms can support significant weight.
- Made for hand or forklift load and unloading applications.
- Removable spigots to stop loose items such as pipes from rolling off the arms and base.
- Available in single or double-sided configurations.

Why use cantilever racking

Common Storage Applications

- **Building materials;** Timber, plywood, drywall sheets, sheet metal.
- **Industrial materials;** Steel pipes, Aluminium extrusions, PVC pipes.
- **Furniture components;** Carpet rolls, oversized furniture, Appliances.
- **Automotive;** Cars, trailers, parts.

C200 Cantilever

Light duty cantilever racking (C200) is designed for lighter storage requirements.

The arm capacity typically varies between 250kg to 450kg per arm, depending on the arm length and configuration of the cantilever system.

The most common storage applications for light duty cantilever racking include aluminium extrusion, PVC pipe, timber and much more. Shorter post heights are perfect for loading and unloading by hand.

Available in powder coated; blue posts and bases, orange arms and galvanised bracing for installation indoors and hot dipped galvanised for outdoor applications.

	Powder coated & Galvanised (HDG)
Height	2000mm 2400mm 3000mm 3600mm* 4200mm*
Arm Section & Maximum Load Capacity	700mmL x 80mmH – 450kgs UDL 900mmL x 80mmH – 350kg UDL 1200mmL x 80mmH – 260kg UDL*
Column Centres (bracing)	900mm 1200mm 1500mm 1800mm

* not available in Hot-dipped galvanised (HDG)

C305 Cantilever

A robust industrial racking system that is specially designed to store a variety of building and construction materials.

The arms are rated up to 1000kgs UDL per arm, however this may vary depending on the arm length and configuration of the cantilever system.

Items stored on the cantilever are designed to be loaded and unloaded from the front by either forklift manually or by overhead crane.

All sizes are available in powder coated; blue posts and bases, orange arms and galvanised bracing for installation indoors and hot dipped galvanised for outdoor applications.

	Powder coated & Galvanised (HDG)
Height	2438mm 3048mm 3658mm 4267mm 4877mm 5486mm 6096mm
Arm Section & Maximum Load Capacity	900mmL x 120mmH – 1300kg UDL 1200mmL x 120mmH – 1000kg UDL 1500mmL x 150mmH – 1000kg UDL
Column Centres (bracing)	900mm 1200mm 1500mm 1800mm 2100mm



C200 cantilever



C305 cantilever

Outdoor HDG Cantilever

Galvanised cantilever racking is specifically designed for outdoor environments, resisting corrosion and harsh weathering over time.

All racking quoted for installation outdoors is wind and seismic tested based on the configuration and installation area.

To provide an accurate quote for outdoor cantilever, it's essential to address the following questions.

- Suburb and postcode of where the rack is going to be installed?
- Description of the surrounding area (i.e. industrial estate or farmland)?
- How far away are the nearest buildings or trees over 5m high?

From these answers we can determine the wind region and terrain. These can have a significant impact on the overall bay load rating.



Strip footing



Hot-dipped galvanised



Concrete slab

When it comes to installing outdoor racking, many people may forget or overlook the ground surface. It's important to remember that the racking must be installed on a concrete surface, bitumen and gravel are not suitable. Depending on your situation, we recommend either a concrete slab or concrete strip footings with a minimum of 32Mpa.

“Wind Regions” refer to the classification of different regions of Australia, based on wind speeds and frequency of extreme weather events experienced in those areas. These regions are determined according to the Australian Standards AS1170.2:2021 Structural Design Actions.

“Terrain” is an important factor in building design and engineering. It relates to the areas exposure to wind as a result of the surrounding terrain.

Terrain 1.0 - Racking to be installed where there are no buildings or development, or trees within 200m (flat plane or field).

Terrain 2.0 - Racking to be installed no more than 200m from buildings in a rural area containing trees.

Terrain 2.5 - Racking to be installed no more than 100m from buildings in a well-developed industrial area or no more than 50m from buildings in a semi builtup area.

Terrain 3.0 - Racking to be installed no more than 5m from buildings in a well-developed industrial area.



Industrial Storage



APEX Longspan Shelving can be easily configured to suit your requirements, with a wide range of standard heights, depths, and lengths available. This flexibility makes it an inexpensive mid-range storage solution, ideal for a variety of applications, products, and industries.

Longspan Shelving

With its streamlined design, longspan suits a range of commercial, industrial and residential spaces from workshops to storerooms, home garages to shipping containers, and manufacturing facilities and much more.

By investing in the right shelving, you can significantly enhance storage capacity and streamline operations at your warehouse or free up space in your home. With its superior ability to utilise vertical space, customised design options, organisational capabilities, and robust strength, longspan shelving is a practical and cost-effective choice.

It is recommended that all longspan shelving of heights greater than 3000mm must anchored to the ground with appropriate anchors for stability and anything shorter is recommended to be anchored but is not a requirement.



Longspan shelving

Beam Length	Overall First Bay Length	Overall Add-on Bay Length	Max Capacity per Beam Pair	Frame Height	Frame Depth
900mm	1020mm	960mm	890kgs	900mm / 1000mm / 2000mm / 2400mm / 3000mm / 4000mm	460mm / 600mm / 900mm / 1200mm
1200mm	1320mm	1260mm	660kgs		
1500mm	1620mm	1560mm	530kgs		
1800mm	1920mm	1860mm	450kgs		
2100mm	2220mm	2160mm	385kgs		
2400mm	2520mm	2460mm	300kgs		



Particle board



Steel galvanised panels



Mesh deck



First bay configuration



Add-on bay configuration

Features and benefits of Longspan Shelving

- Quick and easy assembly.
- Lightweight yet durable.
- Easily adjust levels every 50mm increment or add-on to existing longspan.
- Upright frames are bolted together rather than welded. This ensures greater structural flexibility and strength over a longer period of time and prolonged use.
- Shelves are retained within the beam step, creating a flush and neat level.
- Compatible with a range of accessories, such as drawers, tubs and cable rack.

Longspan Accessories



Longspan drawer



Cable rack



Mesh dividers

Longspan Modular Workbench Accessories

Customise and enhance your Longspan shelving or workbench with our versatile range of modular accessories. Best suited for 900mm and 1800mm long beams with 600mm deep frames,

this range includes drawer units, overhead cabinets and stainless steel benchtops, perfect for creating a clean and organised setup.

Item	Type	Size
SLH400	Overhead cabinet	893mmL x 250mmD x 445mmH
SLH405	2 drawer unit	893mmL x 558mmD x 375mmH
SLH410	1 drawer unit	893mmL x 558mmD x 375mmH
SLH440	250mmH divider to suit SLH410	250mmH
SLH445	110mmH divider to suit SLH405	110mmH
SLH455	Stainless Steel Bench Top	890mmL x 675mmD x 25mmH
SLH460	Stainless Steel Bench Top	1786mmL x 675mmD x 25mmH
SLH520	Stainless steel volcano punch panel	933mmL x 610mmH



Modular longspan



SLH400



SLH405



SLH410

APEX Pallet Racking Workbenches

Pallet Racking Workbenches are heavy duty and high quality, great for any warehouse, workshop, or garage. As standard, they come complete with 18mm particle, post caps and board supports.

It is recommended to fit 300kg castor wheels to the 2-tier rack workbenches to make them mobile.



2-tier Rack Workbench

Beam Length	Overall External Length	Recommended Board Supports	Depth	Height
1372mm	1552mm	2 per shelf	609mm / 838mm / 1219mm	914mm
2591mm	2770mm	3 per shelf		
2743mm	2920mm	3 per shelf		

4-tier Rack Workbench

Beam Length	Overall External Length	Recommended board supports for 838mm levels	Recommended z-clips for upper shelf	Depth	Height	Top Shelf Capacity
1372mm	1552mm	2 per shelf	4 per shelf	838mm with 415mm top shelves	914mm high to benchtop and 1829mm high overall	Maximum 100kgs (2 x 50kgs shelves)
2591mm	2770mm	3 per shelf	6 per shelf			
2743mm	2920mm	3 per shelf	8 per shelf			

Longspan Workbenches

Longspan workbenches are lightweight, yet durable making them easy to assemble and install. Suits a variety of uses an storage items. Add-on to longspan shelving to create your own custom setup.

All workbenches come complete with post caps and are compatible with 100kgs castor wheels.



2-tier Rack Workbench

Beam Length	Overall External Length	Frame Depth	Frame Height
900mm	1020mm	460mm / 600mm / 900mm / 1200mm	Overall 900mm
1200mm	1320mm		
1500mm	1620mm		
1800mm	1920mm		
2100mm	2220mm		
2400mm	2520mm		

4-tier Rack Workbench

Beam Length	Overall External Length	Frame Depth	Frame Height	Top Shelf Capacity
900mm	1020mm	900mm with 460mm top shelf	900mm high to benchtop and 2000mm high overall	Maximum 100kgs (2 x 50kgs shelves)
1200mm	1320mm			
1500mm	1620mm			
1800mm	1920mm			
2100mm	2220mm			
2400mm	2520mm			

Gondola Shelving

Gondola Shelving is available as single-sided or double-sided configurations and widely used in retail settings such as grocery stores, supermarkets, chemists, hardware stores and variety stores.

When buying and loading gondola shelving, it's important to keep weight limits in mind. Each bay can hold up to 240kg UDL per side (with a maximum height of 2100mm). Individual shelves and wire baskets can support up to 80kg UDL each. The shelves are made from 0.8mm steel, while the backing panels are made from 1.0mm steel for added strength.



Gondola shelving



First bay configuration

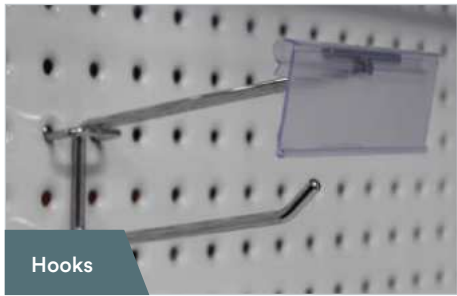


Add-on bay configuration

A wide range of accessories that will perfectly compliment your gondola shelving setup:

- Increased storage capacity compared to traditional industrial 900Lx400Dx250H wire shelf baskets & matching dividers.
- Wire front fences & shelf dividers.
- Chrome single prong hooks – ranging between 100-300mm in length.
- Chrome hooks with ticket holder – between 150-345mm long.
- 900L drawers on wheels.
- Magazine holders.
- 790mm internal corner bays. Available in single or double-sided configurations.

Height:	Width:	Raised Shelf Depths:	Base Shelf Depth:	Maximum Bay Load:	Maximum Shelf Capacity:
1500mm / 1800mm (1500+300mm extension) / 2100mm	900mm	350mm / 400mm / 450mm	450mm	240kgs UDL per side	80kgs UDL



Hooks



Drawer



Magazine holder



Wire basket & dividers



Wire shelf dividers

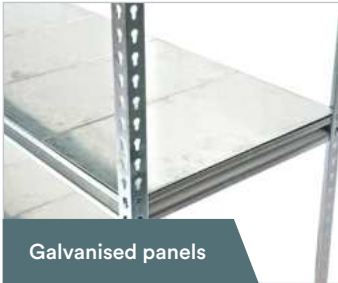
Galvanised Rivet Shelving

Galvanised rivet shelving is used for a variety of applications including box or archive storage, storerooms, parts storage, workshops and even cool room shelving.

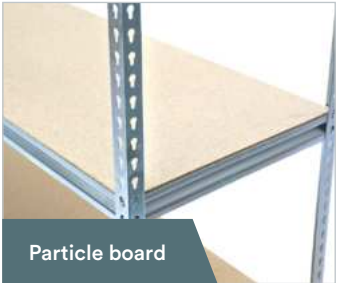
Its electro galvanised surface treatment and the ability to remove the shelves and clean them means it can be used as cool room shelving. Being electro galvanized (otherwise known as zinc plated) the surface is metallic and caution should be used when choosing a cleaning product.



Mesh deck



Galvanised panels



Particle board



Galvanised rivet shelving

Beam Length	Beam ties	Max Capacity	Post Height	Bay Depth	Maximum Bay Capacity
910mm	N/A	250kgs	1829mm / 2134mm / 2438mm	430mm / 570mm	750kgs UDL
1210mm	1	250kgs			
1510mm	1	220kgs			
1810mm	2	200kgs			
2110mm	3	170kgs			
2410mm	3	150kgs			

Particle board is commonly used for general purpose applications and the steel galvanised panels are generally used for grocery applications and the mesh deck for cool rooms. Beam ties are used to hold together the front and back z-beams, which also strengthens the shelving unit.

Rolled Upright Type (RUT) Shelving

Rolled Upright Type (RUT) Shelving is a quality steel modular shelving systems suitable for many applications.

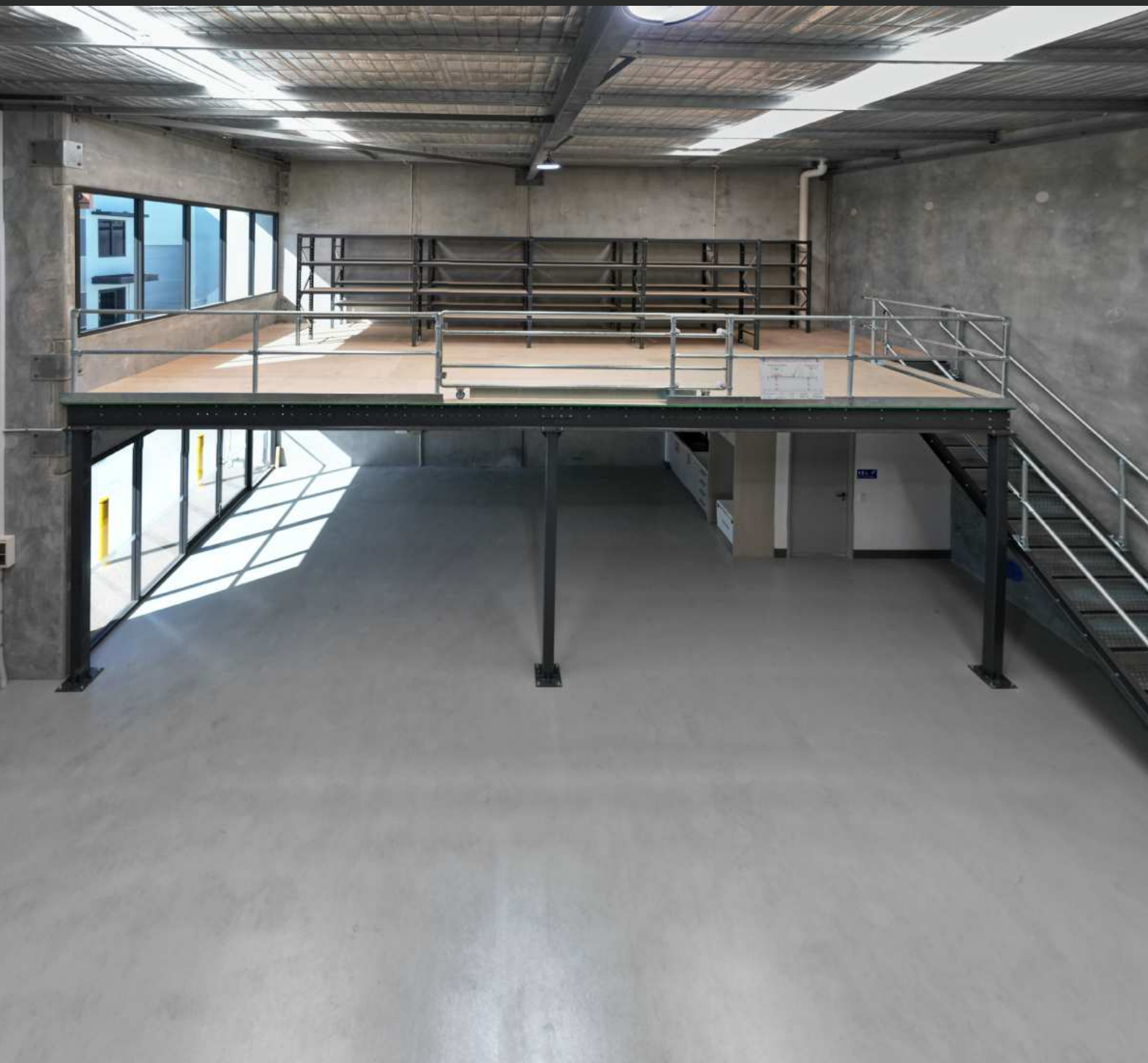
Each bay consists of a shell with adjustable shelves. The shelves will hold 90kg evenly distributed and you may have as many or as few adjustable shelves as you require. Each bay will hold a maximum of 800kg.

Depths	Shelf Size	Shelf Capacity	Maximum Bay Capacity	Bay Height	Bay Length
320mm	895×295mm	90kgs	800kgs	2175mm	900mm
420mm	895×295mm				
620mm	895×295mm				



Shelf divider

Mezzanine Floors



Unlock the full potential of your warehouse or workshop space with a mezzanine floor — custom-designed, innovative solutions that let you double your usable area without the need for a larger building. These can be constructed with our modular structural system or a APEX rack- supported system. All our mezzanine systems are engineered to Australian standards and offer flexible configurations tailored to your layout and load requirements. Supported by reliable delivery timelines and a lifetime structural warranty, our mezzanines are built to deliver long-term value and scalability as your business grows.

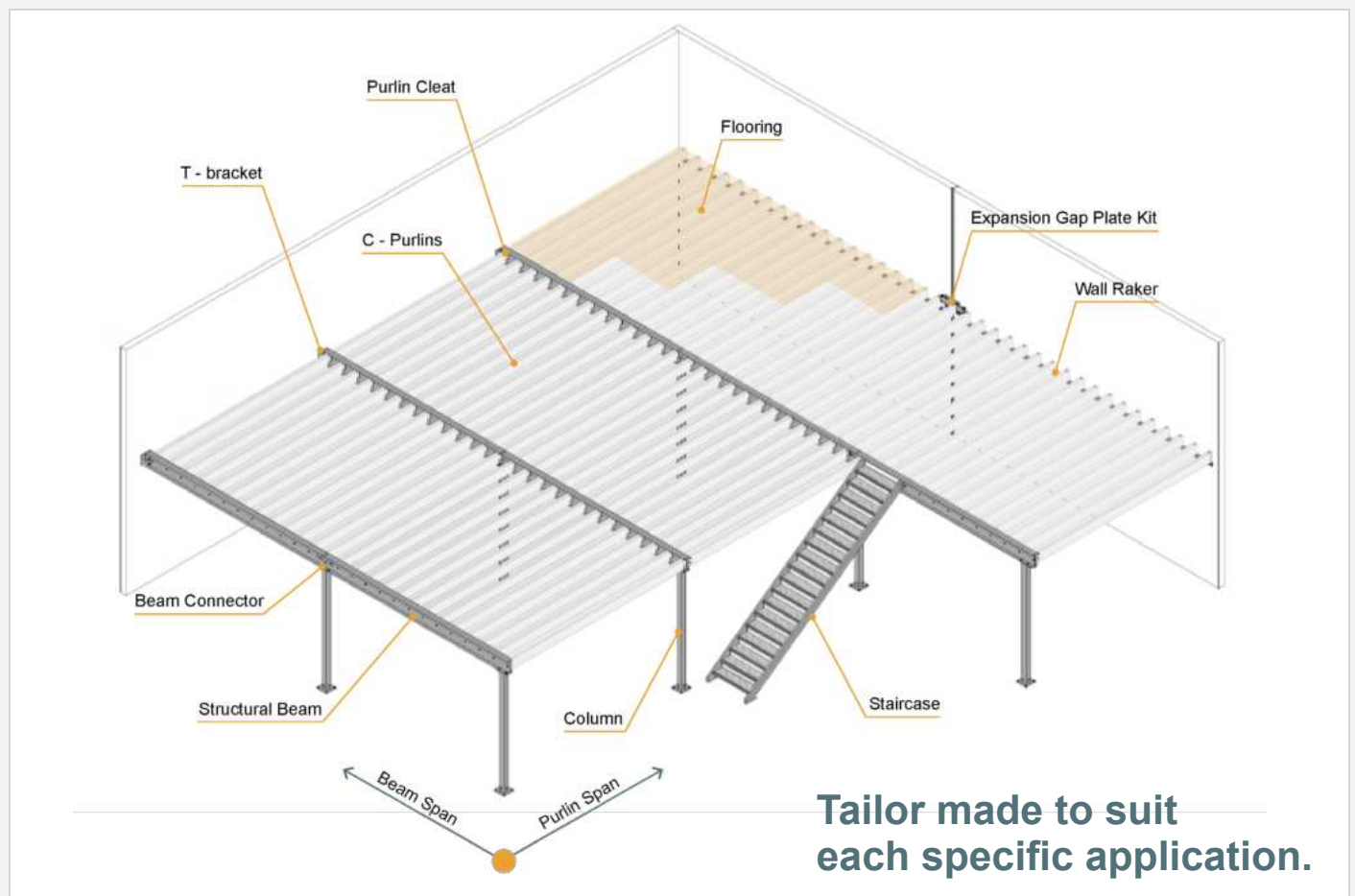
Structural Mezzanine/ Raised Storage Area (RSA)

Our modular structural mezzanine floors feature streamlined, practical design engineered for versatility and durability. Constructed from heavy-duty structural steel, each system is built with a large clear span to maximize usable space below.

- **Clear heights:** 2400mm, 2582mm, and 2945mm.
- **Finished floor heights:** 2722mm, 2904mm, and 3267mm.



RSA Components



APEX Racking Supported Floor

Rack-supported mezzanine floors are built from standard heavy-duty pallet racking components, they offer varying load capacities to suit a wide range of applications. From archiving and document storage to loose inventory such as spare parts, tools and fittings.

Dual-Purpose Design

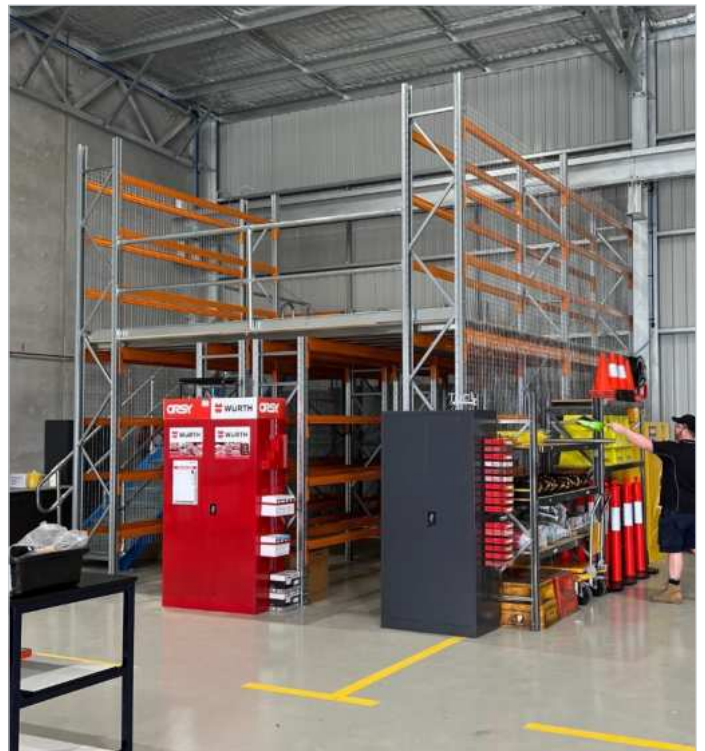
Combines pallet racking with a mezzanine deck, offering storage both below and above—maximising space efficiency.

Flexible and Scalable Design

Easily customised to fit your unique layout and operational needs, our mezzanine systems can be quickly expanded or reconfigured as your business grows.



Easy to reconfigure, expand or relocate as your storage needs evolve.



Clamp Style Handrail

The clamp style handrail is a durable and versatile system designed for easy construction of handrails and barrier solutions. It features a galvanised clamp system that eliminates the need for welding or custom fabrication, making installation quick and efficient. In addition to handrails, this system is ideal for a wide range of applications including trolley bays, animal enclosures, and playgrounds.

Handrail tubing is available in either high-visibility powder-coated yellow or corrosion-resistant hot-dipped galvanised (HDG) finishes to suit both indoor and outdoor environments.



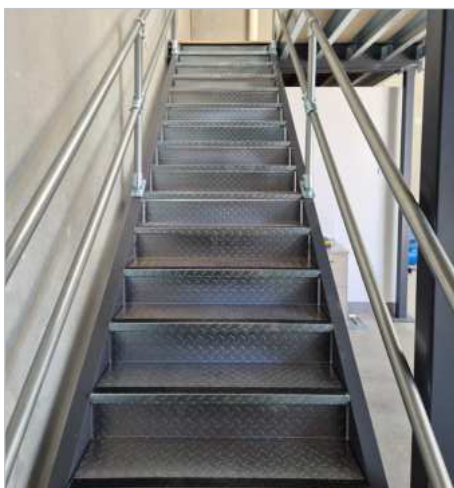
Bollards



Model	HR100	HR105	HR110	HR115
Height	1000mm	1000mm	1200mm	1200mm
Diameter	120mm	120mm	160mm	160mm
Wall thickness	3.5mm	3.5mm	5.25mm	5.25mm
Finish	powder coat	HDG	powder coat	HDG
Base size	210×210×10mm	210×210×10mm	250×250×10mm	250×250×10mm

Staircases

- Tread: 800mm (overall 926-950mm wide) and 1000mm (overall 1126-1150mm wide).
- Constructed of 3mm checker plate folded and securely bolts through to stringer.
- Black abrasive, non-slip strip at the edge and a 135mm closed riser at the rear.
- Finished floor heights: 2722mm, 2904mm and 3267mm when using 22mm flooring.



Kick Rail

- Item code: HR255.
- Size: 1995mmL x 85mmD x 107mmH.



Sliding Gate

- Item code: HR300 + HRC080 (Stanchion kit).
- Colour: Galvanised.
- Size: 2600mm overall / 1800mm clear.
- Needs an overall length of 4200mm to operate effectively.



Personnel (Swing) Gate

A personnel gate, also known as a pedestrian gate, is a type of gate designed specifically for allowing pedestrian access while controlling foot traffic flow, often in industrial or construction settings. These gates are frequently used to separate pedestrians from areas with vehicle traffic or to restrict access to specific zones.

- Item code: HR292.
- Colour: Yellow.
- Size: 1250mm.



Up & Over Gate

- Item code: HR0050.
- Colour: Orange.
- Overall external width: 1942mm.
- Clear width: 1700mm.
- Overall height: 2530mm.
- Max pallet size: 1500 x 1200 x 2400mmH.



Office and Parts Storage

Our range of comprehensive office and parts storage systems are designed to keep your workspace organised, efficient and secure. From cabinets to parts bins, our solutions help streamline workflows, improve accessibility and maximize space in offices, workshops and storerooms.

2-Door Cabinets

Item Code	Description	Number of shelves	Colour	Dimensions (mm)	Shelf Capacity
SOC046	Solid 2-door cabinet	4	Grey	1850H x 450D x 900W	50kgs UDL per shelf
SOC049	Solid 2-door cabinet	4	Graphite Ripple		
SOC048	Mesh door cabinet	5	Grey body with yellow doors		
SOC052	Mesh door cabinet	5	Graphite Ripple body with yellow doors		



Utility Cabinets

Item Code	Description	Colour	Dimensions (mm)
SOC054	4 compartments 1 hanging rail	Light Grey	1850H x 450D x 900W
SOC055	3 point locking system	Graphite Ripple	



Lockers

Item Code	Number of Doors	Internal	Door Dimensions: (mm)	Dimensions: (mm)	Door Opening	Lock	Ventilation
SOC010	1	1 shelf and hanging rod	325W x 1675H	380L x 450D x 1800H	Reversible left or right-hand side opening	Padlock compatible (padlock not included)	2 ventilation slits per door
SOC011	2	Hanging rod in each door	325W x 815H				
SOC012	4	Empty	325W x 390H				



Small Parts Bins

The simplest way of tidying up your loose small parts.

Global parts bins are designed to hang on louvered panels or sit on a shelf to allow you to find small parts quickly and easily in your workshop, shed, warehouse, van or even your toolbox.

Each parts bin comes with a label and label protector to make it easy to identify what is in each parts bin. Bins can be purchased individually in any quantities or in a box.

Item Code	Colour	Dimensions: (mm)	Carton Quantity
SO0201	Grey	105W x 110D x 52H	24
SO0202	Yellow	105W x 140D x 75H	24
SO0203	Green	105W x 190D x 75H	24
SO0204	Blue	140W x 220D x 125H	12
SO0205	Red	140W x 270D x 125H	12



52L Plastic Crate

Item Code	Colour	Dimensions: (mm)
SOBAP10	52L Plastic Crate	413W x 645D x 276H
SOBAP10L	Plastic Lid to suit 52L Crate	425W x 656D x 32H



Stackable Parts Bins

Features & benefits of the stackable parts bins

- Complete with label and plastic protector.
- Can be stacked with and without stacking pins.
- These bins can be hung on a standard louvre panel.
- When stacking, keep the structure tight by locking the bins together using the side channels.
- SO0320N - Black Divider 370D to suit SO0308N & SO0310N.
- PP (5) a lightweight durable Polypropylene. Resistant to fats, acids, alkaline and does not absorb water. Optional assembly at additional cost.



Item Code	External Dimensions: (mm)	Internal Dimensions: (mm)	Carton Quantity	Stacking Pins Per unit	Dividers (sold separately)
SO0308N	214W x 370D x 175H	175W x 325D x 170H	8	4	Yes (1 slot)
SO0310N	420W x 370D x 175H	385W x 325D x 170H	4	4	Yes (3 slot)
SO0360	200W x 450D x 175H	160W x 405D x 170H	12	4	No
SO0370	300W x 450D x 175H	240W x 405D x 170H	8	4	No
SO0400	400W x 600D x 220H	355W x 540D x 210H	1	6	No

Parts Trays

Features & benefits of the stackable parts bins

- Ideal for small parts storage.
- Complete with label and plastic protector.
- Dividers sold separately to create multiple compartments.
- 11 divider slots on 600mm deep trays and 7 divider slots for 400mm deep trays.
- Great addition to Longspan Shelving or RUT Shelving.
- PP (5) a lightweight durable Polypropylene. Resistant to fats, acids, alkaline and does not absorb water.



Item Code	Dimensions: (mm)	Carton Quantity
SO04109	117W x 400D x 90H	24
SO04209	234W x 400D x 90H	12
SO04214	234W x 400D x 140H	8
SO06109	117W x 600D x 90H	24
SO06209	234W x 600D x 90H	12
SO06209	234W x 600D x 140H	8

Item Code	Compatible Bins	Carton Quantity
SO0D109	SO04109 & SO06109	360
SO0D209	SO04209 & SO06209	180
SO0D214	SO04214 & SO06214	120

Mobile Parts Trolley

Item Code	Description	Dimensions: (mm)
SO0010	Louvre Panel Backing	970W x 600D x 1585H
SO0012	Square Punch Backing	970W x 600D x 1585H
SO0130	Shelf with Brackets	900W x 200D

You have the option of personalizing the trolley by using a combination of backing panels. For example, mix and match the square punch panel on one side with louvre panels on the other.

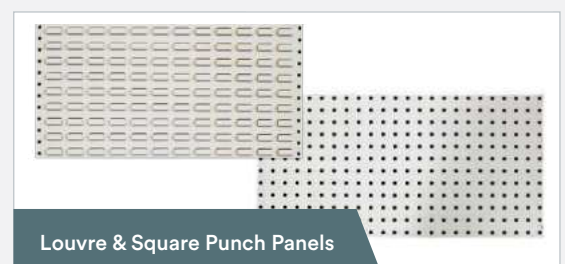
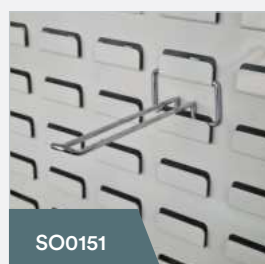
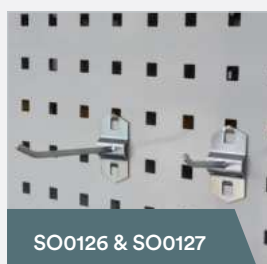
Commonly sold complete with the plastic parts bins (as pictured): 16 grey, 32 yellow, 32 green, 12 blue and 24 red.



Steel Louvre Panel & Square Punch Panel & Accessories

Item Code	Dimensions: (mm)	Size	Unit Weight
SO0110	Rolled edge louvre panel	900W x 450H	4.85kgs
SO0120	Rolled edge square punch panel	900W x 450H	4.85kgs
SO0111	Flat louvre panel	455W x 455H	2.5kgs
SO0112	Flat louvre panel	455W x 610H	3.4kgs
SO0114	Flat louvre panel	455W x 914H	5kgs
SO0115	Flat louvre panel	455W x 1828H	9.96kgs

Item Code	Description	Size	Compatible Panel
SO0121	Screwdriver Holder	400W x 30D x 57H	Square Punch
SO0122	Saw holder pair	90mm long	Square Punch
SO0123	Belt Hook	40W x 90D	Square Punch
SO0124	Round Hook	125W x 135D	Square Punch
SO0125	U-Hook	45W x 65D	Square Punch
SO0126	Single Hook	50mm long	Square Punch
SO0127	Single Hook	100mm long	Square Punch
SO0140	Single Hook	150mm long	Louvre Panel
SO0151	Double Hook	150mm long	Louvre Panel



Materials Handling



Stackable Stillage

- Galvanised for use inside and outdoors.
- Designed to store long awkward objects for easy transport.
- Stackable to make use of the vertical space.
- Engineering certified to design requirements of AS4991-2004 Lifting Devices and AS4100-2020 Steel Structures.
- Maximum total load placed inside the stillage = 1000kgs.
- Maximum stacking height when fully loaded = 4 stillages high.
- Posts are removable for easy transport and storage when not in use.

Item Code	Load Capacity	External Dimension (mm)	Internal Dimension (mm)	Unit Weight	Safe Stacking Height
MH0100	1000kgs	1430W X 1060D x 1200H	1320W x 950D x 1010H	42kgs	4



Collapsible Stillage Mesh Cage

- Can be stored in 840/838mmD racking.
- Maximum total load placed inside the cage = 1000kgs.
- Maximum stacking height when fully loaded = 4 cages high.
- Engineering certified to design requirements of AS4991-2004 Lifting Devices and AS4100-2020 Steel Structures.
- Solid base to prevent small items falling through.
- Fold down gates on 2 sides.
- 4-way fork entry.
- Constructed with heavy duty base with SHS frame and 50x50x3.5mm mesh walls.

Item Code	Load Capacity	Dimension (mm)	Collapsed Height	Unit Weight	Safe Stacking Height
MH0125	1000kgs	1150W x 1150D x 1120H	355mm	80kgs	4



Wire Cages for Pallets

- Designed to fit over a standard Australian pallet 1165x1165mm.
- 100x50x6mm mesh construction.
- Turn your pallets into cages, full height and half height available.
- Pallet not included.

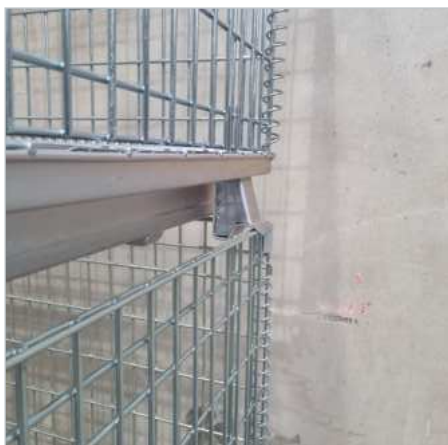
Item Code	Dimension (mm)	Unit Weight	Gate Style	Pallet Attachment
MH0115	1170W x 1170D x 800H	45kgs	Double drop down gate	4 lugs
MH0116	1170W x 1170D x 400H	28kgs	1 drop down gate	4 lugs



Galvanised Mesh Cage

- 100x50x6mm mesh construction.
- Single cages sitting on the ground or on pallet racking beam have a maximum allowable load of 1,000kgs.
- If cages are stacked (up to a maximum of 3 high), the maximum load in any of the stacked cages must not exceed 500kgs.
- Can be folded down for easy transport or storage when not in use.

Item Code	Load Capacity	Stack Capacity	Dimension (mm)	Collapsed Height	Unit Weight	Safe Stacking Height
MH0121	1000kgs	500kgs	1156W x 1156D x 894H	333mm	65kgs	3



Castor Wheels

Item Code	Load Capacity	Mounting type	Swivel or Fixed	Brake/Lock	Diameter	Width of Wheel
MH0050	100kgs	M12 Single thread bolt	Swivel	Yes	100mm	30mm
MH0051	100kgs	M8 4-bolt	Swivel	Yes	100mm	30mm
MH0052	100kgs	M8 4-bolt	Fixed	No	100mm	30mm
MH0054	300kgs	M10 4-bolt	Swivel	Yes	125mm	50mm
MH0056	300kgs	M10 4-bolt	Fixed	No	125mm	50mm



MH0050



MH0051



MH0052



MH0054



MH0056

Toolboxes

 **PARAMOUNTBOXES**



Under Tray Ute Box - Standard



660L/510L x 256D x 410H

Item Code	Color	Wheel	Weight
TB0030	Black	Left	15kg
TB0040		Right	15kg
TB0042	White	Left	15kg
TB0043		Right	15kg
TBA0130	Aluminium	Left	8kg
TBA0135		Right	8kg

- 1.5mm steel powder coated black or white.
- 2mm aluminium sheet mill finish.
- Stainless steel butterfly hinges.
- Side opening door.
- Black/Chrome whale tail compression handle.
- 98mm drop down for tie rail.

Under Tray Ute Box - Tapered



750L x 256D x 260H/405H

Item Code	Color	Wheel	Weight
TB0050	Black	Left	15kg
TB0052		Right	15kg
TB0055	White	Left	15kg
TB0057		Right	15kg
TBA0110	Aluminium	Left	8kg
TBA0112		Right	8kg

- 1.5mm steel powder coated black or white.
- 2mm aluminium sheet mill finish.
- Stainless steel butterfly hinges.
- Drop down door.
- Black/Chrome whale tail compression handle.
- 118mm drop down for tie rail.

Truck Underbody - 600mm



Item Code	Size	Weight
TBP0097	600L x 450D x 450H	20kg

- Black/Chrome whale tail compression handle.
- Empty interior.
- 1.5mm steel powder coated black.
- Stainless steel lance to support door when opened.
- Stainless steel piano hinge.

Truck Underbody - Single Door



Item Code	Size	Weight
TBP0157	1000L x 500D x 500H	28kg

- 2x Black/Chrome whale tail compression handle.
- 1 x full length internal shelf.
- 1.5mm steel powder coated black.
- Stainless steel lance to support door when opened.
- Stainless steel piano hinge.

Truck Underbody - Double Door



Item Code	Size	Weight
TBP0158	1000L x 500D x 500H	28kg

- Black/Chrome whale tail compression handle.
- 1 x internal shelf each section.
- Each section is vented.
- 1.5mm steel powder coated black.
- Stainless steel lance to support each door when opened.
- Stainless steel piano hinges.

Under Tray Trundle Drawer



Item Code	Size	Weight
TBP0093	1500L x 750W/800W x 175H	78kg
TBP0094	1700L x 750W/800W x 175H	85kg

- Black/Chrome whale tail compression handle.
- 750mmW galvanised steel body.
- 800mmW Brushed aluminium front plate.
- TBP0093 drawer capacity: 50kgs UDL.
- TBP0094 drawer capacity: 40kgs UDL.
- Heavy duty sealed bearing runners.

Steel Job Site Box



Item Code	Size	Weight
TB0095	1220L x 622D x 711 H	63kg

- 1.5mm steel powder coated yellow.
- 2x padlock locking points (padlock not included).
- 2x gas struts.
- Stainless steel piano hinge.
- Forklift channels for loading/unloading on work sites.
- Compatible with 4-bolt castors (MH0051 and MH0052).

Steel Gullwing



Item Code	Size	Weight
TBG0010	1700L x 500W x 430H	49kg

- Height in the middle: 430mm including lid.
- Height in the middle: 394mm excluding lid.
- Height on the ends: 380mm including lid.
- 1.5mm steel powder coated white.
- Black/Chrome whale tail compression handle.
- Stainless steel piano hinges.
- 2x gas struts per lid.

Steel Ute Canopy



Item Code	Size	Weight
TBC0012 - White	1770L x 800W x 850H	128kg
TBC0013 - Black		
TBC0015 - White	1770L x 1200W x 850H	151kg
TBC0017 - Black		
TBC0020 - White	1770L x 1500W x 850H	211kg
TBC0022 - Black		
TBC0025 - White	1770L x 1800W x 850H	294kg
TBC0027 - Black		

- Black/Chrome whale tail compression handle.
- 1.5mm steel powder coated.
- 800W only has 1 handle per door.
- 1200, 1500 & 1800W have 2 handles per door.
- Empty internal space.
- 90mm drop down from opening to floor.
- Stainless steel piano hinge.
- 200kg static roof load capacity.

Aluminium Dog Boxes



Item Code	Size	Weight	Divider Wall	Floor
TBACS0028 - Black	800W x 1770D x 850H	55kg	Middle swing door with latch	No internal floor
TBACS0030 - White				
TBACS0034 - Black		56kg	Solid wall	No internal floor on dog side
TBACS0036 - White				

- Whale tail handles.
- Full-Length stainless steel piano hinges.
- Full water channel and rubber seal around door opening.
- Full dog box has a middle swinging divider door with latching system to keep open or close.
- No internal floor on dog side.
- Ripple texture.
- 2.5mm aluminium.

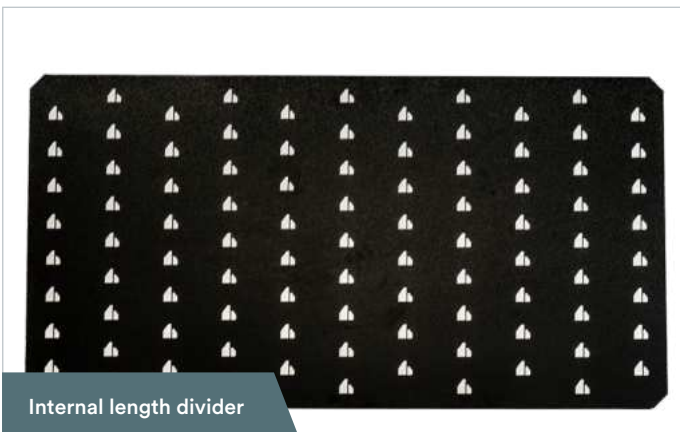
Aluminium Unistrut Canopy



Item Code	Size	Weight
TBACS0005 - Black	1800L x 900W x 871H	111kg
TBACS0007 - White		
TBACS0010 - Black	1800L x 1200W x 871H	132kg
TBACS0012 - White		
TBACS0015 - Black	1800L x 1500W x 871H	152kg
TBACS0017 - White		
TBACS0020 - Black	1800L x 1800W x 871H	172kg
TBACS0022 - White		

- 3mm flat aluminium sheet.
- Unistrut walls, floors and roof for modular interior setups.
- No drop down recess, perfect for accessories.
- Compatible with jack-off lift legs (jacks sold separately).
- Powder coated ripple textured finish.
- Black/Chrome whale tail compression handle.
- Stainless steel piano hinge.
- 300kg static roof load capacity.
- Optional accessories.

Unistrut Canopy Accessories



Code: TBACS105- 900L (Black)
 Code: TBACS110 - 1200L (Black)
 Code: TBACS115 - 1500L (Black)
 Code: TBACS117 - 1500L (White)
 Code: TBACS120 - 1800L (Black)
 Code: TBACS122 - 1800L (White)



Code: TBACS130 - M8 Short Bolt
 Code: TBACS135 - M10 Short Bolt
 Code: TBACS140 - M8 Long Bolt
 Code: TBACS145 - M10 Long Bolt
 Code: TBACS150 - M10 Eye Bolt
 Code: TBACS155 - M12 Eye Bolt

Unistrut Canopy Accessories



Set of 4
Canopy jacks

Code: TBAC0032



Set of 4
Tie down latches

Code: TBAC0034



Unistrut roof rack (Pair)

Code: TBACS0048 (Black)
Code: TBACS0049 (White)



Side mounting panel

1361 L x 450H
Code: TBACS0090 (Black)
Code: TBACS0092 (White)



Aluminium shelf set

550W x 450D x 550H
Code: TBACS0067 (Black)
Code: TBACS0068 (White)



Spare shelf

Code: TBACS0074 (Black/Upper)
Code: TBACS0076 (White/Upper)
Code: TBACS0077 (Black/Lower)
Code: TBACS0078 (White/Lower)



Steel 4-drawer set

550W x 450D x 550H
Code: TBACS0060 (Black)
Code: TBACS0062 (White)



Overhead shelf

680W x 665D x 200H
Code: TBACS0080 (Black)
Code: TBACS0082 (White)



Internal angled divider

800H x 750D
Code: TBACS00100 (Black)
Code: TBACS00102 (White)

850H Series - Aluminium Full Open



Item Code	Size	Weight
TBA0790 - White	1280L x 616D x 850H	52kg
TBA0875 - Black		
TBA0795 - White	1565L x 616D x 850H	58kg
TBA0880 - Black		
TBA0800 - White	1750L x 616D x 850H	64kg
TBA0885 - Black		

- Black/Chrome whale tail compression handle.
- 3 x 50x50mm fork channels with anchor points.
- 1 x full length internal shelf 427mmD. Adjustable 30mm increments.
- 1.5mm steel powder coated white.

850H Series - Aluminium 4 Drawer Minebox



Item Code	Size	Weight
TBA0810 - White	1280L x 616D x 850H	73kg
TBA0890 - Black		
TBA0815 - White	1565L x 616D x 850H	82kg
TBA0895 - Black		
TBA0820 - White	1750L x 616D x 850H	87kg
TBA0900 - Black		

- Black/Chrome whale tail compression handle.
- 2 x fixed internal half length shelves with dividing wall.
- 4 x internal drawers on left hand side.
- 3 x 50x50mm fork channels with anchor points.
- Spring-loaded latches on all drawers.
- 1.5mm steel powder coated white.
- 35kg drawer capacity.

850H Series - Steel Full Open



Item Code	Size	Weight
TBP0200	1000L x 616D x 850H	70kg
TBP0205	1280L x 616D x 850H	79kg
TBP0210	1565L x 616D x 850H	88kg
TBP0212	1750L x 616D x 850H	98kg

- Black/Chrome whale tail compression handle.
- 3 x 50x50mm fork channels with anchor points.
- 1 x full length internal shelf 427mmD. Adjustable 30mm increments.
- 1.5mm steel powder coated white.

850H Series - Steel Half Open



Item Code	Size	Weight
TBP0275	1000L x 616D x 850H	60kg
TBP0280	1280L x 616D x 850H	75kg
TBP0285	1565L x 616D x 850H	90kg
TBP0287	1750L x 616D x 850H	98kg

- Black/Chrome whale tail compression handle.
- 3 x 50x50mm fork channels with anchor points.
- 1 x full length internal shelf 230mmD. Adjustable 30mm increments.
- 1.5mm steel powder coated white.
- 1000L only has 1 handle.

850H Series - Steel 4 Drawer Minebox



Item Code	Size	Weight
TBP0186	1000L x 616D x 850H	99kg
TBP0188	1280L x 616D x 850H	103kg
TBP0190	1565L x 616D x 850H	115kg
TBP0191	1750L x 616D x 850H	139kg

- Black/Chrome whale tail compression handle.
- 4 x internal drawers on left hand side.
- Spring-loaded latches on all drawers.
- 35kg drawer capacity.
- 2 x fixed internal half length shelves with dividing wall.
- 3 x 50x50mm fork channels with anchor points.
- 1.5mm steel powder coated white.

850H Series - Steel Side-by-side 4 Drawer Minebox



Item Code	Size	Weight
TBP0250	1000L x 616D x 850H	95kg
TBP0255	1280L x 616D x 850H	113kg
TBP0260	1565L x 616D x 850H	129kg
TBP0262	1750L x 616D x 850H	135kg

- Black/Chrome whale tail compression handle.
- 4 x internal drawers.
- Spring-loaded latches on all drawers.
- 35kg drawer capacity.
- 2 x fixed internal half length shelves with dividing wall.
- 3 x 50x50mm fork channels with anchor points.
- 1.5mm steel powder coated white.

850H Series - Steel 8 Drawer Minebox



Item Code	Size	Weight
TBP0294	1280L x 616D x 850H	136kg
TBP0296	1565L x 616D x 850H	157kg

- Black/Chrome whale tail compression handle.
- 8 x internal half length drawers.
- Spring-loaded latches on all drawers.
- 35kg drawer capacity.
- 1 x full length internal shelf. Adjustable 30mm increments.
- 3 x 50x50mm fork channels with anchor points.
- 1.5mm steel powder coated white.

950H Series - Steel Square Truck Box



Item Code	Size	Weight
TBP0100	1280L x 616D x 850H	97kg
TBP0105	1565L x 616D x 850H	112kg

- Black/Chrome whale tail compression handle.
- Middle fixed partition wall.
- 2 x adjustable shelves on left hand side.
- 3 x 50x50mm fork channels with anchor points.
- 1.5mm steel powder coated white.

950H Series - Steel Full Open



Item Code	Size	Weight
TBN0145	1000L x 616D x 950H	69kg
TBN0155	1280L x 616D x 950H	79kg
TBN0165	1565L x 616D x 950H	88kg
TBN0168	1750L x 616D x 950H	98kg

- Black/Chrome whale tail compression handle.
- 3 x 50x50mm fork channels with anchor points.
- 1 x Full length internal shelf 427mmD. Adjustable 30mm increments.
- 1.5mm steel powder coated white.

950H Series - Steel 4 Drawer Minebox



Item Code	Size	Weight
TBN0610	1280L x 616D x 950H	115kg
TBN0620	1565L x 616D x 950H	132kg
TBN0625	1750L x 616D x 950H	148kg

- Black/Chrome whale tail compression handle.
- 2 x fixed internal half length shelves with dividing wall.
- 4 x internal drawers on left hand side.
- 3 x 50x50mm fork channels with anchor points.
- Spring-loaded latches on all drawers.
- 1.5mm steel powder coated white.
- 35kg drawer capacity.

950H Series - Steel 8 Drawer Minebox



Item Code	Size	Weight
TBN0680	1280L x 616D x 950H	152kg
TBN0690	1565L x 616D x 950H	175kg

- Black/Chrome whale tail compression handle.
- 1 x full length internal shelf 427mmD. Adjustable 30mm increments.
- 8 x internal half length drawers.
- 3 x 50x50mm fork channels with anchor points.
- Spring-loaded latches on all drawers.
- 1.5mm steel powder coated white.
- 35kg drawer capacity.

705H Series - Steel Half Open



Item Code	Size	Weight
TBP0161W	900L x 500D x 705H	50kg
TBP0162W	1220L x 500D x 705H	60kg
TBP0163W	1450L x 500D x 705H	70kg

- Black/Chrome whale tail compression handle.
- 1 x Full length internal shelf 250mmD. Fixed position, removable.
- 900L only has 1 handle.
- 1.5mm steel powder coated white.

705H Series - Steel Full Open



Item Code	Size	Weight
TBP0176W	900L x 500D x 705H	49kg
TBP0177W	1220L x 500D x 705H	59kg
TBP0178W	1450L x 500D x 705H	69kg

- Black/Chrome whale tail compression handle.
- 2 x Full length internal shelf 250mmD. Fixed position, removable.
- 900L only has 1 handle.
- 1.5mm steel powder coated white.

705H Series - Steel 4 Drawer Minebox



Item Code	Size	Weight
TBP0180	1220L x 500D x 705H	82kg
TBP0182	1450L x 500D x 705H	94kg

- Black/Chrome whale tail compression handle.
- 4 x internal drawers on left hand side.
- Spring-loaded latches on all drawers.
- 35kg drawer capacity.
- 2 x fixed internal half length shelves with dividing wall.
- 1.5mm steel powder coated white.

Spare Parts and Accessories



Slide out bench

Strong 40kg UDL capacity

Code: TBS005 - 1115L x 450D (suits TBP0205 or TBN0155)

Code: TBS007 - 1400L x 450D (suits TBP0210 or TBN0165)



Deep drawers

Swap 140+90mm existing drawers in minebox to create 1 deeper drawer

Code: TBS015 - 420L x 230H (suits 1000L drawers)

Code: TBS017 - 560L x 230H (suits 1280L drawers)

Code: TBS019 - 702L x 230H (suits 1565L drawers)



Replacement drawer slides (sold as pairs)

Code: TBS-Dslide 002 - suits TBP0093 trundle drawer

Code: TBS-Dslide 005 - suits TBP0094 trundle drawer

Code: TBS-Dslide 015 - suits 705H series drawers

Code: TBS-Dslide 018 - suits 850H & 950H series drawers



Replacement struts

Code: TBS-Gstrut-10 - Gas Strut 345*120*200N

Code: TBS-Gstrut-17 - Gas Strut 345*120*450N

Code: TBS-Gstrut-20 - Gas Strut 345*120*650N

Code: TBS-Gstrut-30 - Gas Strut 505*210*200N

Code: TBS-Gstrut-35 - Gas Strut 505*210*350N

Code: TBS-Gstrut-40 - Gas Strut 505*210*500N

Spare shelves



Code: TBS-Shelf-230x0956 - suits TBP0275

Code: TBS-Shelf-230x1236 - suits TBP0280

Code: TBS-Shelf-230x1521 - suits TBP0285

Code: TBS-Shelf-230x1706 - suits TBP0287

Code: TBS-Shelf-250x0894 - suits 900L x 705H series

Code: TBS-Shelf-250x1214 - suits 1220L x 705H series

Code: TBS-Shelf-250x1444 - suits 1450L x 705H series

Code: TBS-Shelf-408x1193 - suits TBN0680 & TBP0294

Code: TBS-Shelf-408x1478 - suits TBN0690 & TBP0296

Code: TBS-Shelf-427x0956 - suits 1000L 850H & 950H series

Code: TBS-Shelf-427x1236 - suits 1280L 850H & 950H series

Code: TBS-Shelf-427x1521 - suits 1565L 850H & 950H series

Code: TBS-Shelf-427x1706 - suits 1750L 850H & 950H series

Steel canopy shelf



Code: TBS-Shelf-001 (suits TBC0012 & TBC0013)

Code: TBS-Shelf-005 (suits TBC0015 & TBC0017)

Code: TBS-Shelf-009 (suits TBC0020 & TBC0022)

Code: TBS-Shelf-013 (suits TBC0025 & TBC0027)

Lockable jerry can holder



Code: TBAC0040 (Black)

Code: TBAC0042 (White)

Drop down vice



Code: TBV0005 (Vice)

Code: TBV0007 (Cover)

Scan to contact us



Global Industrial

Perth

26 Sangiorgio Court,
Osborne Park WA 6017
T (08) 9258 7166
perth@globalind.com.au

Brisbane

Unit 3, 43 Rudd Street
Oxley QLD 4075
T (07) 3272 1225
brisbane@globalind.com.au

Melbourne

122 Radnor Drive,
Deer Park VIC 3023
T (03) 9338 8000
melbourne@globalind.com.au

Sydney

40 Lyn Parade,
Prestons NSW 2170
T (02) 8103 5095
sydney@globalind.com.au