

# Mezzanine Floors



Unlock the full potential of your warehouse or workshop space with a mezzanine floor — custom-designed, innovative solutions that let you double your usable area without the need for a larger building. These can be constructed with our modular structural system or a APEX rack- supported system. All our mezzanine systems are engineered to Australian standards and offer flexible configurations tailored to your layout and load requirements. Supported by reliable delivery timelines and a lifetime structural warranty, our mezzanines are built to deliver long-term value and scalability as your business grows.

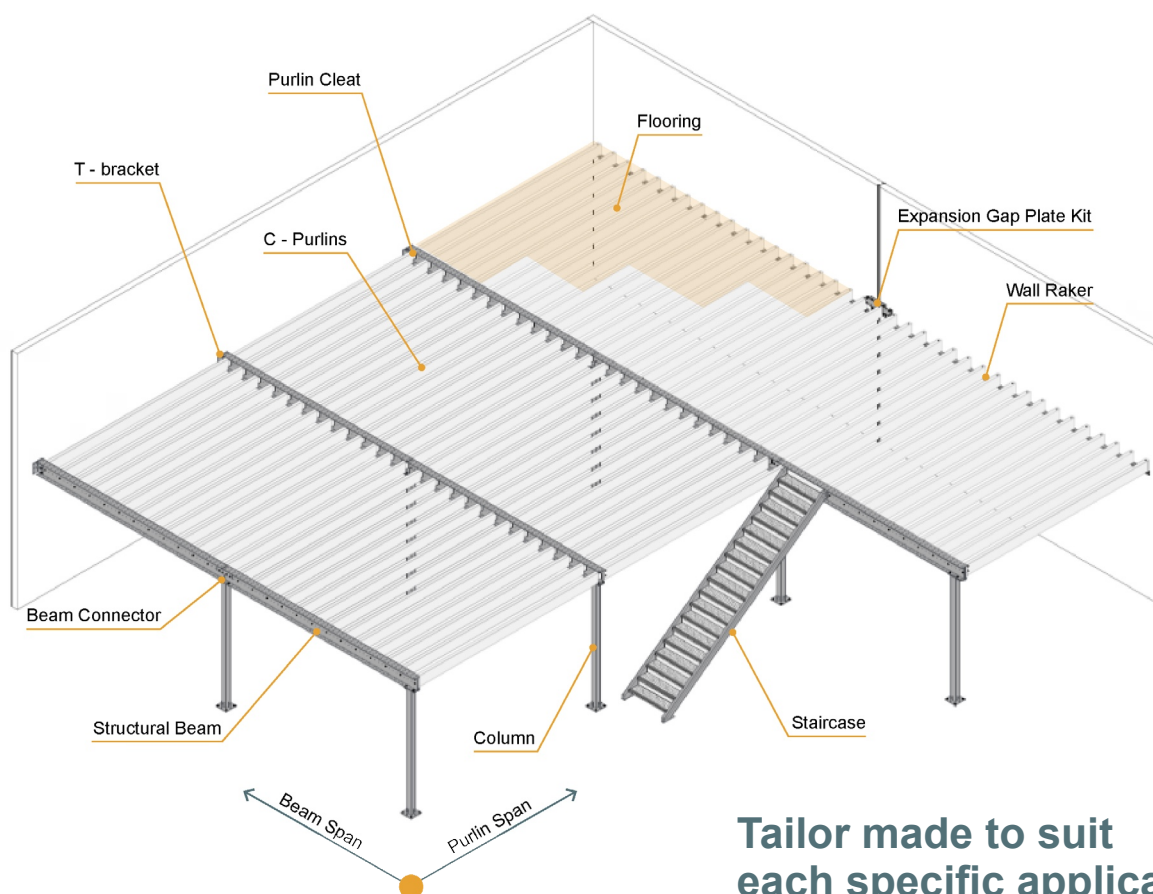
## Structural Mezzanine/ Raised Storage Area (RSA)

Our modular structural mezzanine floors feature streamlined, practical design engineered for versatility and durability. Constructed from heavy-duty structural steel, each system is built with a large clear span to maximize usable space below.

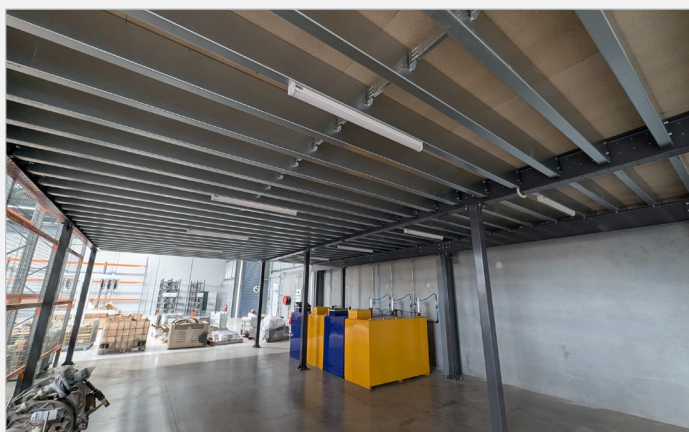
- **Clear heights:** 2400mm, 2582mm, and 2945mm.
- **Finished floor heights:** 2722mm, 2904mm, and 3267mm.



### RSA Components



**Tailor made to suit  
each specific application.**



## APEX Racking Supported Floor

Rack-supported mezzanine floors are built from standard heavy-duty pallet racking components, they offer varying load capacities to suit a wide range of applications. From archiving and document storage to loose inventory such as spare parts, tools and fittings.

### Dual-Purpose Design

Combines pallet racking with a mezzanine deck, offering storage both below and above—maximising space efficiency.

### Flexible and Scalable Design

Easily customised to fit your unique layout and operational needs, our mezzanine systems can be quickly expanded or reconfigured as your business grows.



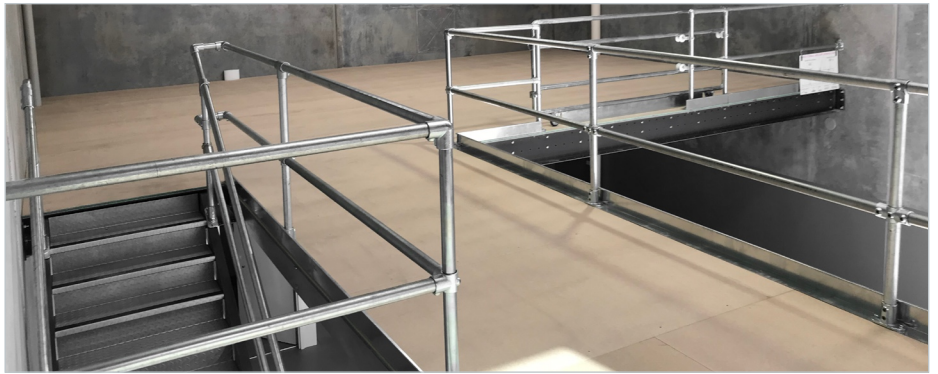
Easy to reconfigure, expand or relocate as your storage needs evolve.



## Clamp Style Handrail

The clamp style handrail is a durable and versatile system designed for easy construction of handrails and barrier solutions. It features a galvanised clamp system that eliminates the need for welding or custom fabrication, making installation quick and efficient. In addition to handrails, this system is ideal for a wide range of applications including trolley bays, animal enclosures, and playgrounds.

Handrail tubing is available in either high-visibility powder-coated yellow or corrosion-resistant hot-dipped galvanised (HDG) finishes to suit both indoor and outdoor environments.



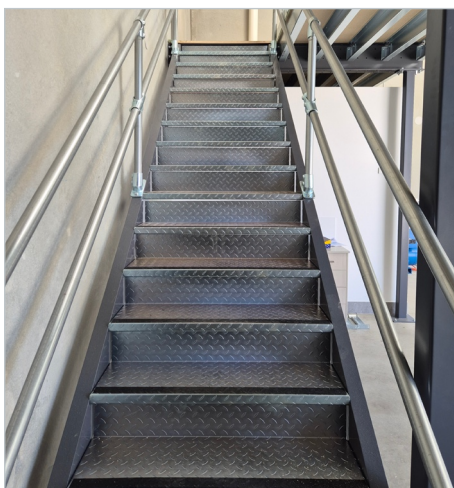
## Bollards



Model	HR100	HR105	HR110	HR115
Height	1000mm	1000mm	1200mm	1200mm
Diameter	120mm	120mm	160mm	160mm
Wall thickness	3.5mm	3.5mm	5.25mm	5.25mm
Finish	powder coat	HDG	powder coat	HDG
Base size	210×210×10mm	210×210×10mm	250×250×10mm	250×250×10mm

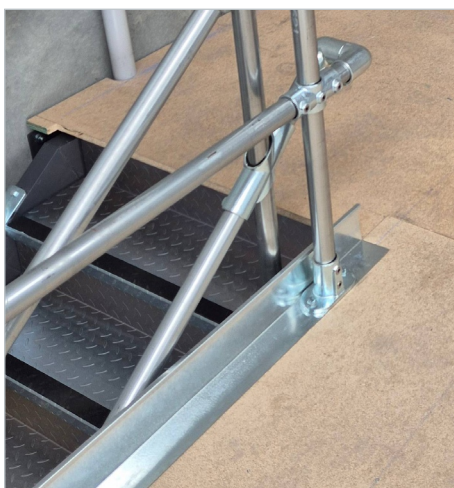
## Staircases

- Tread: 800mm (overall 926-950mm wide) and 1000mm (overall 1126-1150mm wide).
- Constructed of 3mm checker plate folded and securely bolts through to stringer.
- Black abrasive, non-slip strip at the edge and a 135mm closed riser at the rear.
- Finished floor heights: 2722mm, 2904mm and 3267mm when using 22mm flooring.



## Kick Rail

- Item code: HR255.
- Size: 1995mmL x 85mmD x 107mmH.



## Sliding Gate

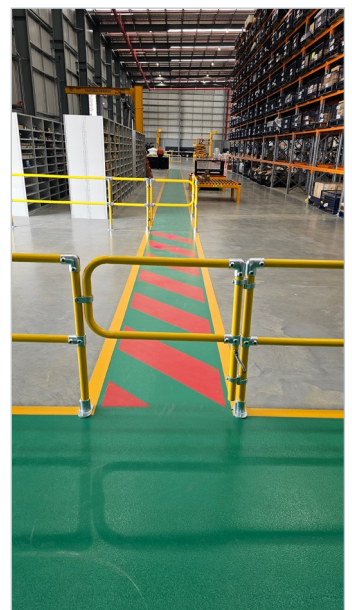
- Item code: HR300 + HRC080 (Stanchion kit).
- Colour: Galvanised.
- Size: 2600mm overall / 1800mm clear.
- Needs an overall length of 4200mm to operate effectively.



## Personnel (Swing) Gate

A personnel gate, also known as a pedestrian gate, is a type of gate designed specifically for allowing pedestrian access while controlling foot traffic flow, often in industrial or construction settings. These gates are frequently used to separate pedestrians from areas with vehicle traffic or to restrict access to specific zones.

- Item code: HR292.
- Colour: Yellow.
- Size: 1250mm.



## Up & Over Gate

- Item code: HR0050.
- Colour: Orange.
- Overall external width: 1942mm.
- Clear width: 1700mm.
- Overall height: 2530mm.
- Max pallet size: 1500 x 1200 x 2400mmH.





Scan to contact us

**Perth**

26 Sangiorgio Court,  
Osborne Park WA 6017  
T (08) 9258 7166  
[perth@globalind.com.au](mailto:perth@globalind.com.au)

**Melbourne**

122 Radnor Drive,  
Deer Park VIC 3023  
T (03) 9338 8000  
[melbourne@globalind.com.au](mailto:melbourne@globalind.com.au)

**Brisbane**

Unit 3, 43 Rudd Street  
Oxley QLD 4075  
T (07) 3272 1225  
[brisbane@globalind.com.au](mailto:brisbane@globalind.com.au)

**Sydney**

40 Lyn Parade,  
Prestons NSW 2170  
T (02) 8103 5095  
[sydney@globalind.com.au](mailto:sydney@globalind.com.au)