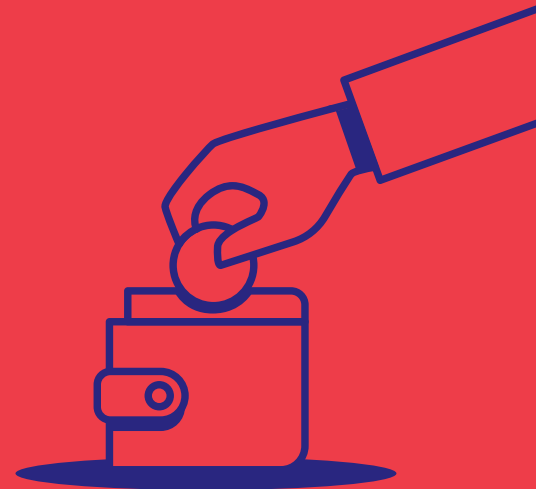


Rebatable Benefits

Employees of Rebatable Employers are entitled to take advantage of significant taxation reducing benefits.

Depending on your employer's policy, you can salary package Non-Cash Benefits (NCB) which translates to spending \$15,900 on Reportable Fringe Benefits during each FBT Year and receive a rebate (discount) of 47% off the Fringe Benefits Tax that applies to the expenses.

This means you can pay for some of your living expenses from your pre-tax salary.



What is salary packaging?

Rather than paying for some of your expenses in your 'after-tax' income, you choose to pay for some of your expenses in your 'pre-tax income'.

Tax is then payable on the amount left after these expenses are paid.

- You can reduce your taxable income
- You pay less tax
- You take home MORE cash each fortnight

How much can I save?

With Salary Package		Without Salary Package	
Annual Gross Salary	146,000	Annual Gross Salary	146,000
Salary Package Amount Rent/Mortgage/Utilities etc	15,900	Income Tax Payable	44,437
FBT Payable	7,473		
New Taxable Income	122,627	Net Take Home Pay	101,563
Income Tax Payable	35,220	Rent/Mortgage/ Utilities	15,900
Net Results in Take Home Pay	87,407	Net Results in Take Home Pay after expenses paid	85,663
Overall Saving from Tax	1,744		

*Please note Easi's salary packaging fee is not included in the above breakdown

What you can package:

FBT rebatable benefits

The following items can be packaged up to \$15,900 per FBT year:

- Mortgage/Personal Loan Interest repayments
- Home rental
- School fees
- Utility expenses
- Credit card repayments

Exempt benefits

The following items can be paid from your pre-tax salary and not impact your cap:

- Work-related equipment such as laptops, mobiles & electronic devices
- Superannuation contributions
- Airport lounge membership
- Professional journal & body costs

Concessional benefits

The following car leasing programs can be tailored to suit your circumstances and can be part of your cap or in addition to it:

- Novated lease