

Promat



PROMASEAL[®] HPE Sealant

Fire Resistant Intumescent Sealant



PROMASEAL® HPE Sealant

Fire Resistant Intumescent Sealant

General Description

PROMASEAL® HPE is a fire resistant, intumescent sealant for interior penetration seals. It is designed to provide a high-volume expansion and pressure seal during a fire, for areas where combustible services penetrate apertures in floors and walls that are designed to provide compartmentation.

Packaging

- 600ml foil pack - 12 per box

Application and use

Reinstates the fire resistance performance in a wall or floor around combustible penetration services. PROMASEAL® HPE can be used in conjunction with various substrates, please refer to tested details.

Installation & Operation

Promat Australia recommend installation of Promat Australia products is carried out by experienced fire protection installers.

The substrate must be clean, dry, sound and homogeneous, free from oils, grease, dust and loose particles. The product does not require a primer on most common surfaces, although adhesion tests are recommended prior to full scale application.

Product Details	
Material	Graphite based PVA/acrylic intumescent sealant
Weight	~1.35g/cm ³
Finish / Colour	Anthracite grey, matt finish
Size/dimensions (product & installation spacial requirement)	Annular space and depth as per requirements of approval tables at back of manual
Shelf life	18 months if stored in accordance with storage conditions
Sag Flow	~0 mm (WI 018)
Skin Time	~40 minutes (23°C/50% r.h)
Shore A Hardness (28 Days)	85/81 (1 Second/5 Seconds) (BS ISO 7619-1:2010)
Chemical Resistance / Limitations	Not to be used where material is to be constantly immersed in water. Do not use on substrates that are likely to release solvents, oils or plasticizers. Not resistant to water, strong acids, strong bases, oxidizing agents (i.e. hydrogen peroxide), alcohols, hydrocarbon solvents

Adequate space and accessibility should be provided for applying and tooling the sealant.

The substrate depth should be such as to provide a minimum sealant depth required as per tested systems.

The sealant should be gunned firmly into the aperture ensuring that it is in full contact with the sides of the aperture and service. Failure to carry this out may result in poor adhesion or incorrect volume of the sealant and ultimate failure of the system.

Tooling of the sealant may be necessary to achieve an acceptable appearance. This is accomplished by drawing a flat tool over the surface of the sealant to produce a smooth neat finish. Tooling also compresses the sealant into the aperture enhancing the adhesion to the joint sides.

Clean all tools and application equipment with water immediately after use.

Maintenance

Recorded inspection should be conducted in line with the maintenance and inspection schedule defined for the building/project.

These inspections should be completed and recorded by suitably competent individuals at intervals outlined in the operation and maintenance manual relevant to the building.

Ensure Safe Access and Egress when carrying out maintenance or inspection.

Where product (s) is damaged or tampered, new product should be installed in line with installation guidance.

Handling & Storage

For unopened material, store in a well-ventilated, dry, cool environment. Recommended temp ranges +5°C - +35°C. Protect against exposure to direct sunlight. Always ensure that safe manual handling procedures are followed at all times.

For information and advice on the safe handling, storage and disposal of chemical products, please refer to the most recent Safety Data Sheet (SDS) available at www.promat.com.au

Disposal

Removal and disposal of cured product must be done in a way that limits, as much as possible, the formation of dust. Adequate PPE must be worn including suitable respiratory equipment in the case of insufficient ventilation.

Disposal of waste sealant must be done according to official regulations and in accordance with a licensed collector's sorting instructions.

Legal Notes

Promat products are manufactured to rigid standards of quality. Any product which has been applied in accordance with Promat Australia's written instructions and in any application recommended by Promat Australia, but which is proved to be defective in product quality, will be replaced free of charge. No liability can be accepted for the information provided in this document although it is published in good faith and believed to be correct at time of issue. Any drawings provided are for illustrative purposes only. Promat Australia reserves the right to alter product specifications without prior notice, in line with our Company policy of continuous development and improvement. Changes due to

new findings are possible, errors and misprints are not excluded. No liability whatsoever will be accepted for any loss, damage or injury arising from the use of the information given. Promat Australia have no control over the methods of installation, competence of operatives or suitability of site conditions, no warranties, expressed or implied, are intended to be given as to the actual performance of the product/system mentioned within this document.

SKU Codes				
Item Code	Description	Size	Colour	Box Qty
4093927	PROMASEAL® HPE Sealant	600ml Foil	Anthracite	12



Our technical support for your next project

We understand that designing and building a passive fire protection solution is often not an easy task.

We can help you to interpret your local regulations and assess the risks in your building project that demand a reliable fire safety solution.

We can provide you with a full technical report and all the supporting documents you need to finalise your design and start the building process. We offer you technical support and practical advice to deliver a perfect fire safety job.

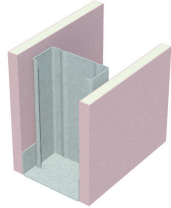
 PAPL.Mail@etexgroup.com

 1800 PROMAT

PROMASEAL® – HPE Sealant

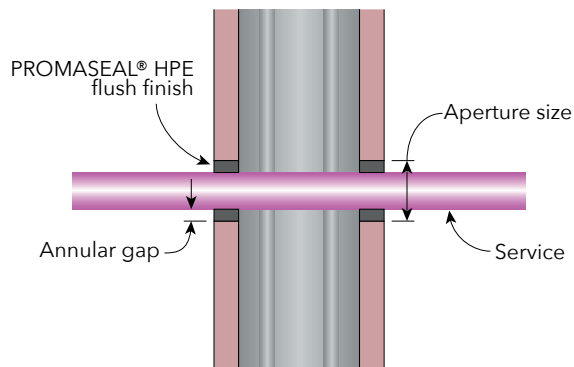
Fire Resistant Plasterboard - 1 hour -

1x13mm fire rated plasterboard on both sides of minimum 64mm steel stud

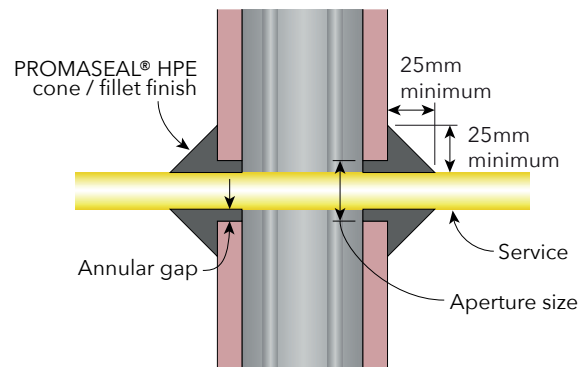


Test Report FRT240226 R1.1

SERVICE	APERTURE SIZE (mm)	ANNULAR GAP (mm)	METHOD		FRL
			Flush finish	Cone / Fillet finish	
16mm PEX/AL/PEX	27	5	✓		-/60/60
20mm PEX/AL/PEX	30	5		✓	-/60/60
20mm PEX/AL/PEX	30	5	✓		-/60/45
25mm PEX/AL/PEX	35	5		✓	-/60/60
25mm PEX/AL/PEX	35	5	✓		-/60/45
32mm PEX/AL/PEX	44	5		✓	-/60/60
32mm PEX/AL/PEX	44	5	✓		-/60/15
16mm PEX	27	5	✓		-/60/60
20mm PEX	30	5	✓		-/60/60
25mm PEX	35	5	✓		-/60/60
19 x CAT 6 / Data cables	50	10		✓	-/60/60
21 x 1.5mm alarm/fire cables	50	10		✓	-/60/60
Pair Coil Bundle (cable + PVC drain)	121	10		✓	-/60/60
2x 20mm conduit with TPS & CAT 6	60	10		✓	-/60/60
30 x 2.5mm TPS / Electrical Cables	80	10		✓	-/60/60
30 x NBN / Fibre Optics Cables	60	10		✓	-/60/60



Flush Installation

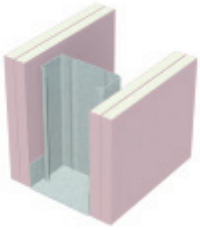


Cone / Fillet Installation

PROMASEAL® – HPE Sealant

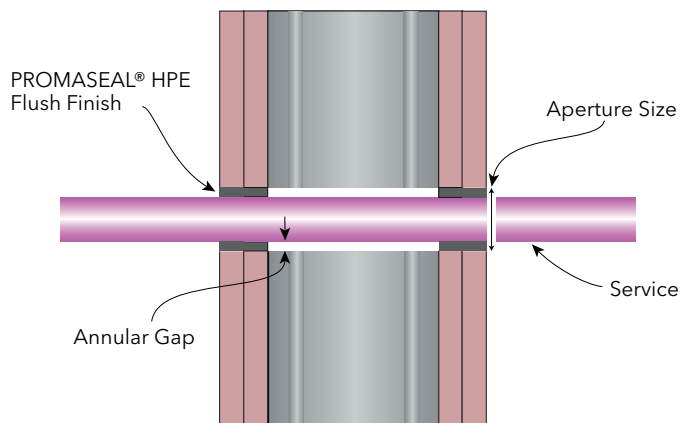
Fire Resistant Plasterboard - 2 hour

2x13mm fire rated plasterboard on both sides of minimum 64mm steel stud

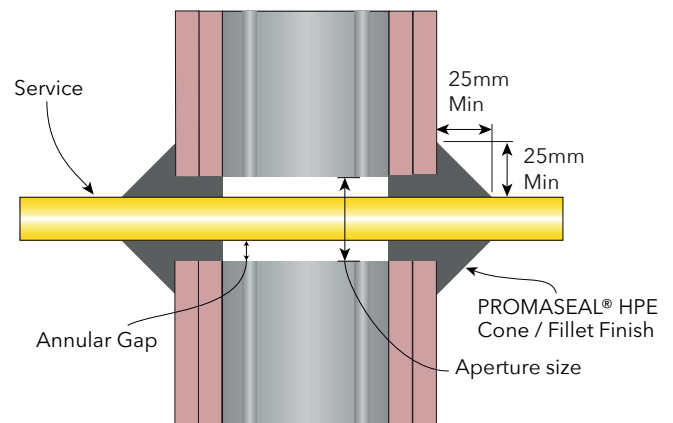


Test Report- FRT240235 R1.0

SERVICE	APERTURE SIZE (mm)	ANNULAR GAP (mm)	METHOD		FRL
			Flush finish	Cone / Fillet finish	
16mm PEX/AL/PEX	36	10	✓	✓	-/120/120
20mm PEX/AL/PEX	40	10	✓	✓	-/120/120
25mm PEX/AL/PEX	45	10		✓	-/120/120
32mm PEX/AL/PEX	52	10		✓	-/90/90
16mm PEX	26	5	✓	✓	-/120/120
20mm PEX	30	5	✓	✓	-/120/120
25mm PEX	35	5		✓	-/120/120
19 x CAT 6 / Data cables	50	10		✓	-/120/120
21 x 1.5mm Alarm/Fire cables	50	10		✓	-/120/120
Pair Coil Bundle (cable + PVC drain)	121	Min 10		✓	-/120/120
2x 20mm conduit with TPS & CAT 6	60	Min 10		✓	-/120/120
23 x NBN / Fibre Optics Cables	60	10		✓	-/120/120
10 x NBN / Fibre Optics Cables	50	10		✓	-/120/120



Flush Installation



Cone / Fillet Installation

PROMASEAL® – HPE Sealant

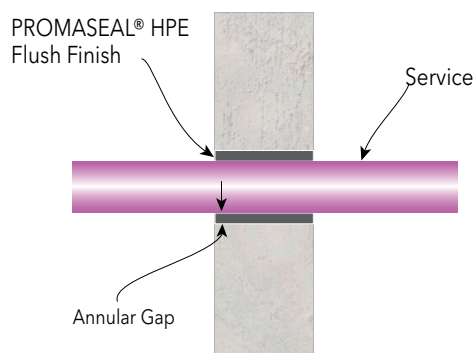
AAC / Hebel Panels

Min 75mm Thick

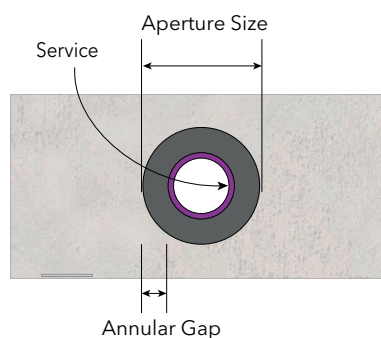


Test Report- FRT240236 R1.0

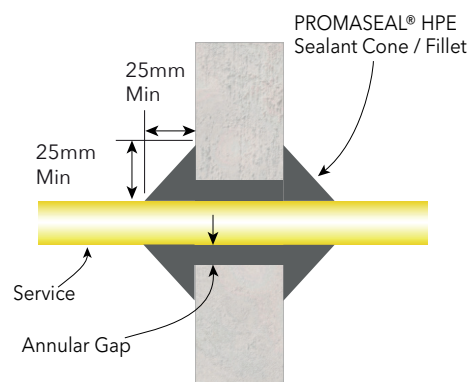
SERVICE	APERTURE SIZE (mm)	ANNULAR GAP (mm)	METHOD		FRL
			Flush finish	Cone / Fillet finish	
16mm PEX/AL/PEX	27	5	✓	✓	-/90/90
20mm PEX/AL/PEX	30	5		✓	-/90/90
25mm PEX/AL/PEX	35	5		✓	-/60/60
32mm PEX/AL/PEX	42	5	✓	✓	-/60/60
16mm PEX	27	5	✓	✓	-/90/90
20mm PEX	30	5	✓	✓	-/90/90
25mm PEX	35	5	✓	✓	-/90/90
19 x CAT 6 / Data cables	50	10		✓	-/90/90
Pair Coil Bundle (cable + PVC drain)	121	Min 10		✓	-/90/90
2x 20mm conduit with TPS & CAT 6	60	Min 10		✓	-/90/90
30 x 2.5mm TPS / Electrical Cables	80	10		✓	-/90/90
23 x NBN / Fibre Optics Cables	60	10		✓	-/90/90
10 x NBN / Fibre Optics Cables	50	10		✓	-/90/90



Flush Installation



Elevation



Cone / Fillet Installation

PROMASEAL[®] – HPE Sealant

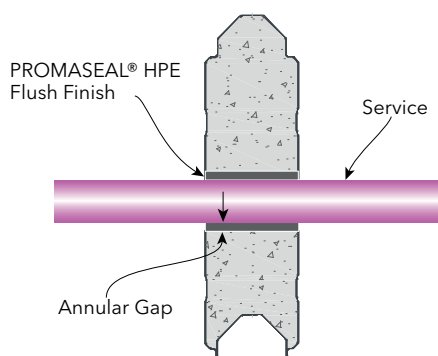
Speedpanel
Min 78mm Thick



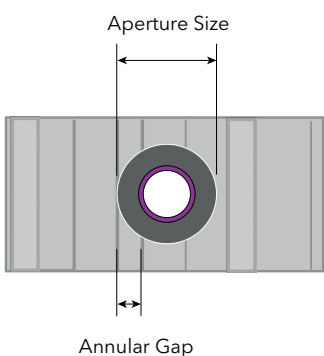
Test Report- FRT240227 R1.0

SERVICE	APERTURE SIZE (mm)	ANNULAR GAP (mm)	METHOD		FRL
			Flush finish	Cone / Fillet finish	
16mm PEX/AL/PEX	26	5	✓	✓	-/120/120
20mm PEX/AL/PEX	30	5		✓	-/120/120
16mm PEX	26	5	✓	✓	-/120/120
20mm PEX	30	5	✓	✓	-/120/120
25mm PEX	35	5		✓	-/120/120
19 x CAT 6 / Data cables	50	10		✓	-/120/120
21 x 1.5mm Fire / Alarm Cables	50	10		✓	-/120/120
2x 20mm conduit with TPS & CAT 6	60	Min 10		✓	-/120/120
23 x NBN / Fibre Optics Cables	60	10		✓	-/120/120
10 x NBN / Fibre Optics Cables	50	10		✓	-/120/120

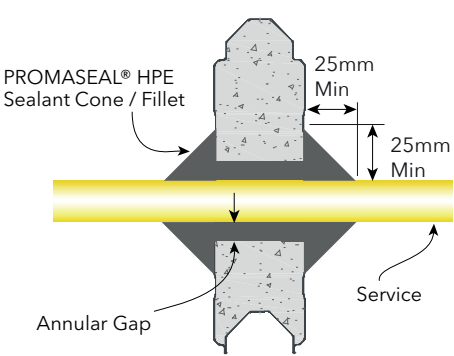
F



Flush Finish



Elevation



Cone / Fillet Installation

PROMASEAL® – HPE Sealant

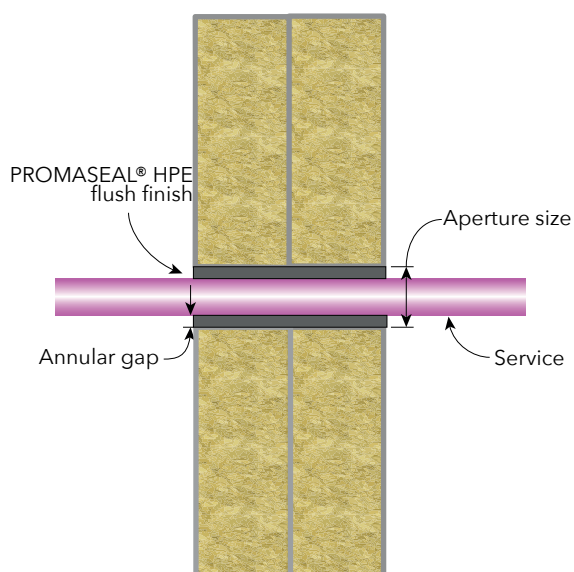
PROMASEAL® Bulkhead Batt

in 2x13mm fire rated plasterboard on both sides of minimum 64mm steel stud

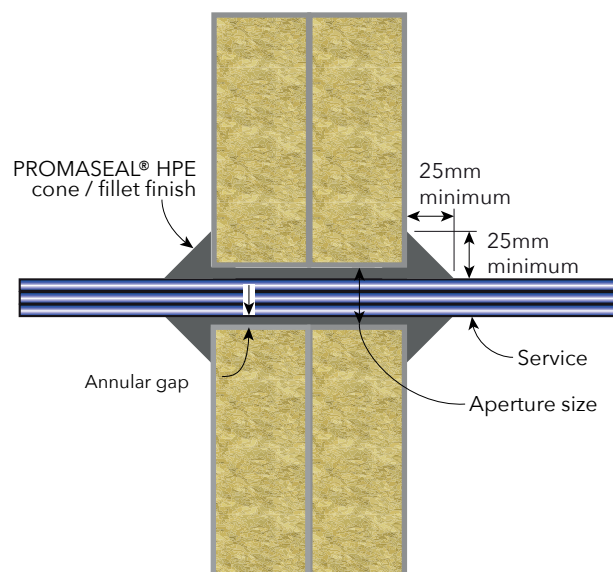


Test Report- FRT121072 R1.0

SERVICE	APERTURE SIZE (mm)	ANNULAR GAP (mm)	METHOD		FRL
			Flush finish	Cone / Fillet finish	
16mm PEX/AL/PEX	36	10	✓		-/120/120
16mm PEX	36	10	✓		-/120/120
20mm PEX	40	10	✓		-/120/120
25mm PEX	45	10	✓		-/120/120
19 x CAT 6 / Data cables	50	10		✓	-/120/120
21 x 1.5mm Alarm/Fire cables	50	10		✓	-/120/120
Pair Coil Bundle (cable + PVC drain)	120	Min 10		✓	-/120/120
2x 20mm conduit with TPS & CAT 6	60	Min 10		✓	-/120/120
23 x NBN / Fibre Optics Cables	60	10		✓	-/120/120
10 x NBN in Conduit (220mm Long)	50	10		✓	-/120/120
Bundle of 4 PEX Pipes	83	Min 10		✓	-/120/120



Flush Installation



Cone/Fillet Installation

PROMASEAL® – HPE Sealant

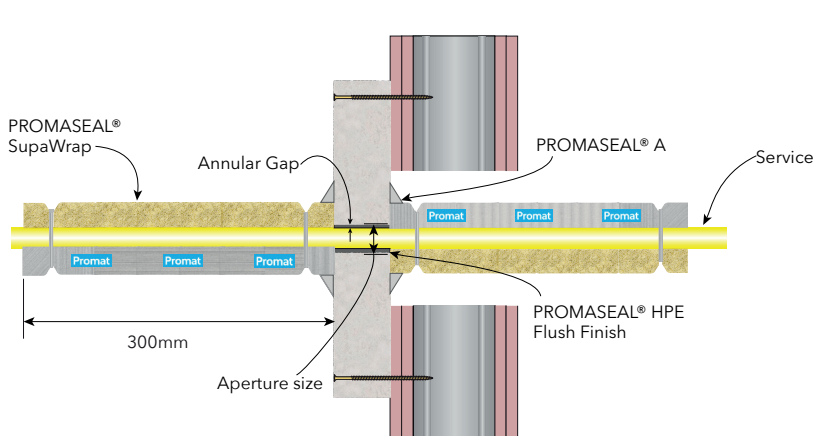
PROMASIL® 1100 Super

In minimum 116mm thick Fire Resistant Plasterboard Wall (2x13mm + 64mm stud)

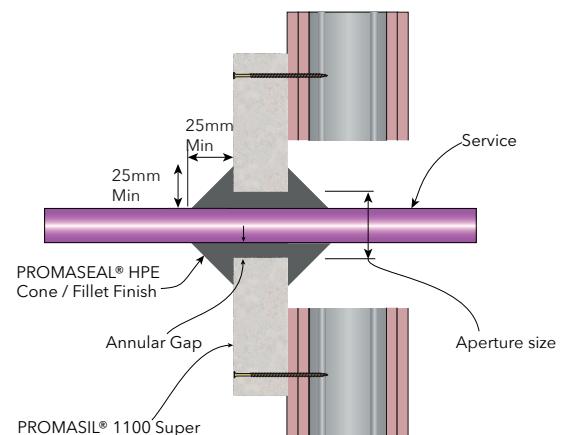


Test Report- FRT121071 R1.0

SERVICE	APERTURE SIZE (mm)	ANNULAR GAP (mm)	METHOD		FRL
			Flush Finish +300mm SupaWrap	Cone / Fillet	
16mm PEX/AL/PEX	36	10	✓		-/90/90
20mm PEX/AL/PEX	40	10	✓		-/120/120
25mm PEX/AL/PEX	45	10	✓		-/90/90
32mm PEX/AL/PEX	52	10	✓		-/90/90
Bundle of 4 PEX/AL/PEX	83	10	✓		-/60/60
16mm PEX	36	10		✓	-/120/120
20mm PEX	40	10		✓	-/120/120
25mm PEX	45	10		✓	-/120/120
Bundle of 4 PEX	83	10	✓		-/60/60
19 x CAT6 Cables	50	10		✓	-/60/60
30 x TPS Cables	80	10		✓	-/90/90
2 x 20mm Conduit with TPS & CAT6	60	10		✓	-/120/120
23 x NBN / Fibre Optic Cables	60	10		✓	-/120/120
10 x NBN in Conduit (160mm long)	50	5		✓	-/120/120
Pair Coil Bundle (+ Cable & Drain)	120	10		✓	-/90/90



Flush + Wrap Installation



Cone / Fillet Installation

PROMASEAL® – HPE Sealant

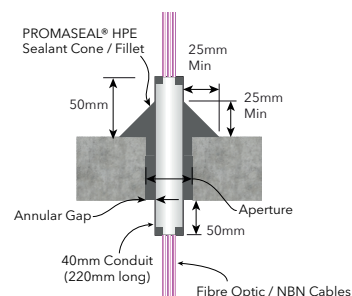
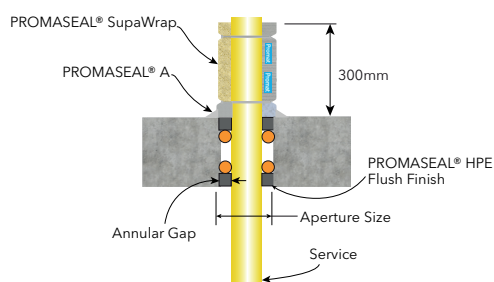
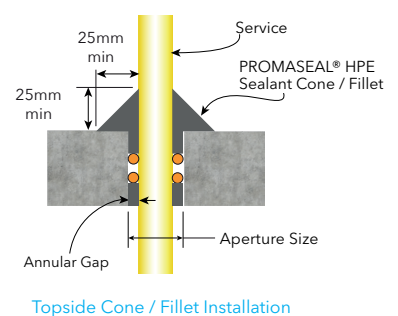
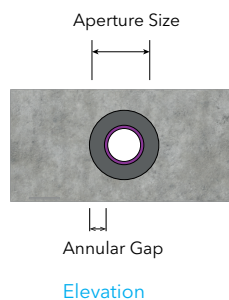
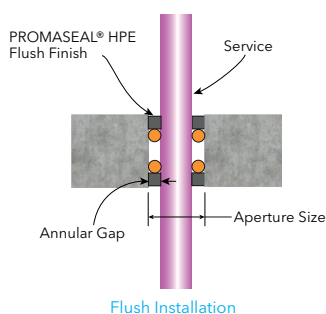
Concrete Slabs

Minimum 120mm thick



Test Report- FRT240228 R1.1

SERVICE	APERTURE SIZE (mm)	ANNULAR GAP (mm)	METHOD			FRL
			Flush finish	Cone / Fillet finish	Cone / Fillet +300mm SupaWrap	
16mm PEX/AL/PEX	38	11		✓		-/120/120
20mm PEX/AL/PEX	38	9			✓	-/120/120
25mm PEX/AL/PEX	50	12		✓		-/120/120
16mm PEX	38	11	✓	✓		-/120/120
20mm PEX	38	9	✓	✓		-/120/120
25mm PEX	50	12	✓	✓		-/120/120
Bundle of 4 Pex Pipes	83	10			✓	-/120/120
19 x CAT 6 / Data cables	50	10		✓		-/120/120
21 x 1.5mm Alarm/Fire Cables	50	10		✓		-/120/120
Pair Coil Bundle (inc Cable + uPVC drain)	114	Min 10		✓		-/120/120
2x 20mm conduit with TPS & CAT 6	64	Min 10		✓		-/120/120
30 x 2.5mm TPS / Electrical Cables	83	10		✓		-/120/120
23 x NBN / Fibre Optics Cables	64	10		✓		-/120/120
10 x NBN in Conduit (220mm long)	50	5		✓		-/120/120



PROMASEAL® – HPE Sealant

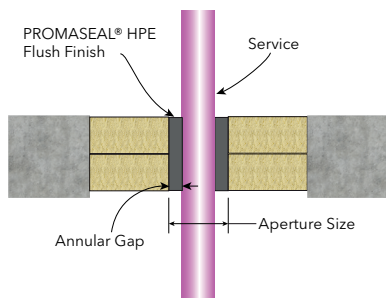
PROMASEAL® Bulkhead Batt

in Minimum 120mm thick concrete slab

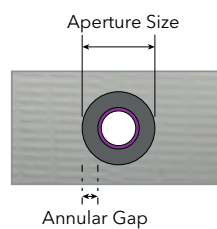


Test Report- FRT240283 R1.1

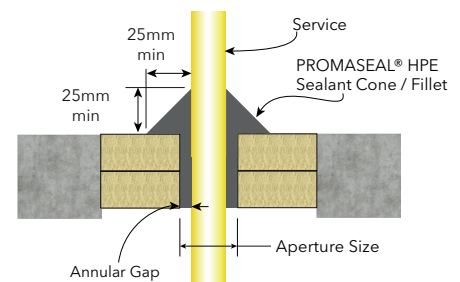
SERVICE	APERTURE SIZE (mm)	ANNULAR GAP (mm)	METHOD			FRL
			Flush finish	Cone / Fillet finish	Cone / Fillet +300mm SupaWrap	
16mm PEX/AL/PEX	36	10		✓		-/120/120
20mm PEX/AL/PEX	40	10		✓		-/120/120
32mm PEX/AL/PEX	52	10			✓	-/120/120
16mm PEX	36	10	✓			-/120/120
20mm PEX	40	10	✓			-/120/120
25mm PEX	45	10	✓			-/120/120
19 x CAT 6 / Data cables	50	10		✓		-/120/120
21 x 1.5mm Alarm/Fire Cables	50	10		✓		-/120/120
Pair Coil Bundle (inc Cable + uPVC drain)	120	Min 10		✓		-/120/120
2x 20mm conduit with TPS & CAT 6	60	Min 10		✓		-/120/120
23 x NBN / Fibre Optics Cables	64	10		✓		-/120/120
10 x NBN in Conduit (220mm long)	50	5		✓		-/120/120



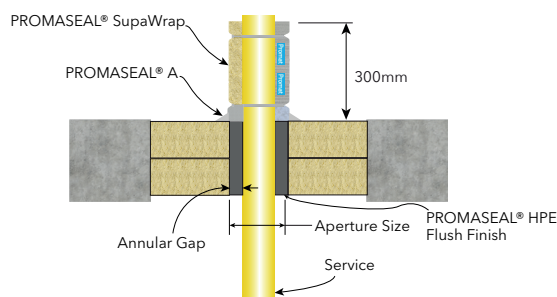
Flush Installation



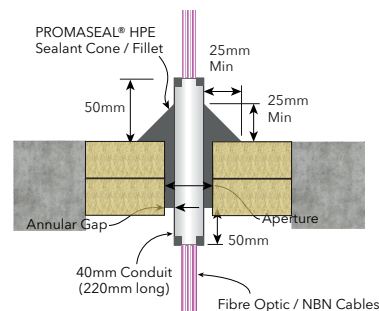
Elevation



Topside Cone / Fillet Installation



Flush Installation + Wrap

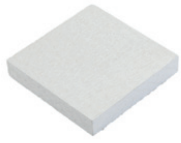


Topside Cone / Fillet Full Depth installation

PROMASEAL® – HPE Sealant

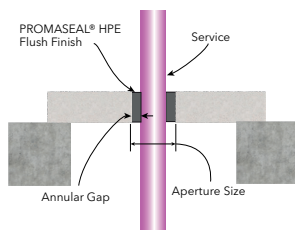
PROMASIL® 1100 Super

In minimum 120mm thick concrete slab

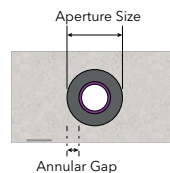


Test Report- FRT240284 R1.0

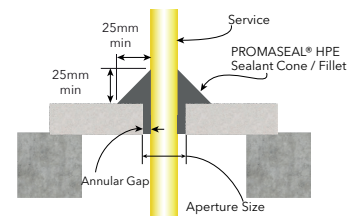
SERVICE	APERTURE SIZE (mm)	ANNULAR GAP (mm)	METHOD			FRL
			Flush finish	Cone / Fillet finish	Cone / Fillet +300mm SupaWrap	
16mm PEX/AL/PEX	36	10		✓	✓	-/120/120
20mm PEX/AL/PEX	40	10			✓	-/120/120
20mm PEX/AL/PEX	40	10		✓		-/90/90
25mm PEX/AL/PEX	45	10		✓	✓	-/120/120
32mm PEX/AL/PEX	52	10			✓	-/90/90
32mm PEX/AL/PEX	52	10		✓		-/60/60
16mm PEX	36	10	✓	✓		-/120/120
20mm PEX	40	10	✓	✓		-/120/120
25mm PEX	45	10		✓		-/120/120
25mm PEX	45	10	✓			-/90/90
2 x 20mm Conduit with TPS & CAT6	60	10		✓		-/90/90
19 x CAT 6 / Data cables	50	10		✓		-/120/120
21 x Alarm / Fire Cables	50	10		✓		-/60/60
23 x NBN / Fibre Optic Cable	60	10		✓		-/120/120
10 x NBN in Conduit (160mm long)	50	5		✓		-/120/120
PairCoil Bundle (+ Cable & Drain)	120	10		✓		-/90/90



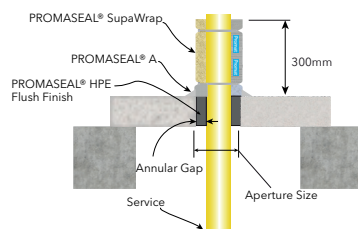
Flush Installation



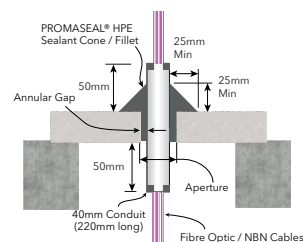
Elevation



Topside Cone / Fillet Installation



Flush Installation + Wrap



Topside Cone / Fillet Full Depth installation

Promat

Australia

Promat Australia Pty Ltd

South Australia office

1 Scotland Road
SA 5031 Mile End South
☎ 1800 Promat (776 628)
☎ +61 8 8352 1014
✉ PAPL.mail@etexgroup.com

New South Wales office

Unit 1, 175 Briens Road
Northmead, NSW 2152
☎ 1800 Promat (776 628)
☎ +61 2 9630 0258
✉ PAPL.mail@etexgroup.com

Victoria office

Unit 1, 355 Grieve Parade
Altona North, VIC 3025
☎ 1800 Promat (776 628)
☎ 1800 334 598
✉ PAPL.mail@etexgroup.com

Queensland office

80 Stradbroke St
Heathwood QLD 4110
☎ 1800 011 376
☎ 1800 334 598
✉ PAPL.mail@etexgroup.com

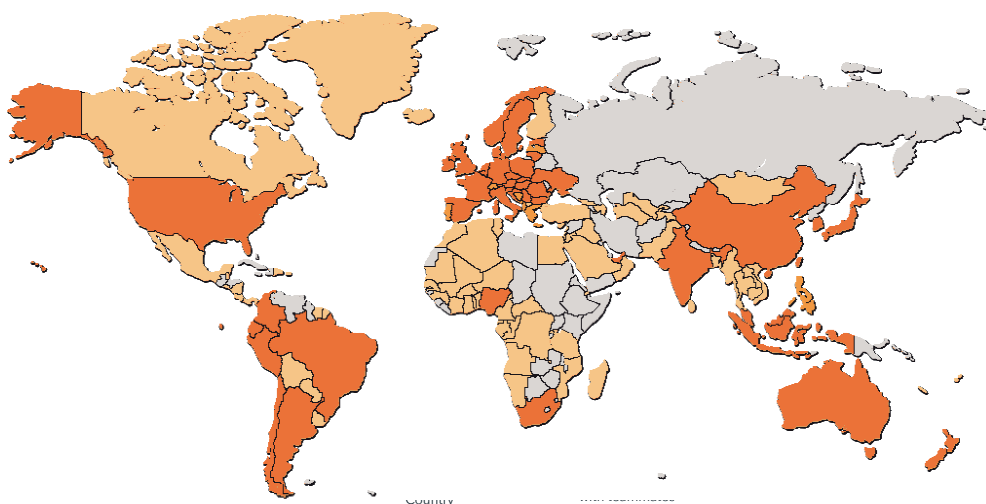


www.promat.com



Promat ANZ

- The technical data provided in this publication is based on mean values prevalent at time of publication and is thus subject to fluctuation. It should not be regarded as a guarantee to system performance.
- All data contained herein conforms to and frequently surpasses generally accepted fire protection standards recognised by most professional fire science practitioners and regulatory authorities worldwide. The same general principle is equally applicable to all Promat products and systems. Promat has access to a considerable body of test authentication data and this can be provided on a complimentary basis upon request. It should be noted however that this publication replaces all previous editions in its entirety.



About Etex

Etex is a global building material manufacturer and pioneer in lightweight construction. Etex wants to inspire people around the world to build living spaces that are ever more safe, sustainable, smart and beautiful.

Founded in 1905, headquartered in Zaventem, Belgium, Etex is a family-owned company with more than 13,500 employees globally. It operates more than 160 sites in 45 countries and recorded a revenue of EUR 3.7 billion in 2022. Etex fosters a collaborative and caring culture, a pioneering spirit and a passion to always do better for its customers.

Etex has five R&D centres supporting five global divisions:

- Building Performance: dry construction solutions including plasterboards and fibre cement boards, plasters and formulated products, passive fire protection and associated products.
- Exteriors: a range of aesthetic fibre cement materials for use in agriculture, architectural and residential exteriors.
- Industry: fire protection and high-performance insulation products for the construction and OEM (Original Equipment Manufacturer) industries.
- Insulation: glass mineral wool and extruded polystyrene (XPS) for thermal and acoustic insulation.
- New Ways: high-tech offsite modular solutions based on wood and steel framing.

Etex's global portfolio includes leading commercial brands such as Promat, Kalsi, Siniat, Equitone, Eternit, Cedral, Durlock, Gyplac, Pladur, Superboard and URSA.

Etex is Inspiring Ways of Living, for more information, please visit our website: www.etexgroup.com