

1. Product Appearance

EQUITONE [lunara] is a high-density through coloured fibre cement panel with no coating. The panel has an honest, pure and natural appearance with natural colour variations and hues. The natural characteristic of the panel may be accentuated by the production process as well as light or dark inclusions.

Its unique texture has a random-looking, non-repeating surface structure, covered with tiny irregular elevations and depressions providing a natural appearance. Thanks to the special production process each panel has its own individual and unique character, no two panels are alike. Colour deviating inclusions contribute to the natural appearance of the surface. The panel has been made water repellent by means of hydrophobation.

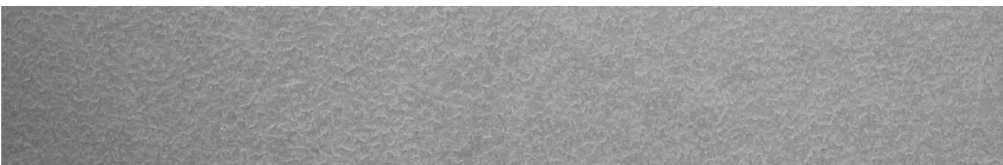
2. Colour

The colour is throughout the panel. Natural colour variations, accentuated by the orientation of the panel, the viewing angle and the effects of light and moisture, strengthen the natural look of the facade.

Colour variations and random hues are part of the natural characteristics of the material. Each panel has its own individual character.

Colour differences are measured according to a simplified CIELAB colour model, by which only the parameter lightness ΔL of the colour is followed. Tolerated colour differences on a dry facade are $\Delta L^* = \pm 2.5$.

Available colours:



LA 20



LA 60

Note: It is not possible to realistically show available colours in literature, therefore the final choice of colours should be made with samples. Please order your samples on the website www.equitone.com.

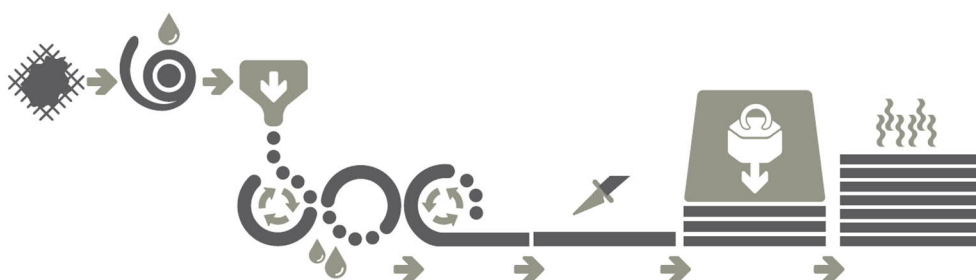
Light reflectance value (colour / %): LA20 / 20.1, LA60 / 26.59

3. Product Composition

EQUITONE [Iunara] panels consist of cement, quartz (silica) sand, cellulose, natural calcium silicate, inorganic colour pigments, water and additives.

4. Production Method

EQUITONE [Iunara] is a highly compressed, autoclaved fibre cement material manufactured in Belgium (Europe).



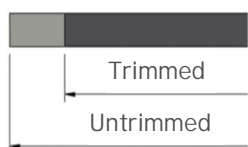
EQUITONE [Iunara] panels are manufactured through the Hatschek process where the base materials which are mainly cement, sand, cellulose, pigments and water are first mixed together to form a slurry. This slurry is then pumped into several vats with rotating cylindrical sieves on the surface of which a film of fibre cement is formed through a sieving mechanism as they rotate, which is then transferred to a felt belt traveling overhead. This thin layer of fibre cement is then dewatered before being transferred via the felt belt to a forming drum on which several layers of fibre cement are collected and squeezed together until the required thickness is achieved. Once this occurs, this fresh sheet of fibre cement is cut by an automatic cutting knife. A conveyor then transports the sheet to where all the sheets are stacked with an interleaving steel plate. The stacked sheets are then highly compressed, resulting in a high density material.

This is followed by a curing process in an autoclave where the panels harden under high temperature and pressure. After curing the panels receive their final finish. The surface is then mechanically processed to create a unique surface.

Subsequently and finally, EQUITONE [Iunara] panels receive a hydrophobation making them water repellent.

5. Dimensions and Tolerances

EQUITONE [Iunara] is available in a standard thickness of 10 mm. The panels are available in either untrimmed (production dimension) or trimmed (maximum usable size) formats. Only trimmed format is available in Australia and New Zealand.



The panel must not be installed with untrimmed edges. Approximately 10 mm needs to be trimmed from each of the untrimmed (raw) edges. Factory trimmed panels are available in both standard and custom (MTO) trimmed formats. For internal applications where trimmed edges are within close viewing position the latter format may be more suitable. The standard factory trimmed edges may have a slight recess located towards the rear face of the panel.

Dimensions

Panel Thickness base sheet	10 mm
Nominal Thickness (for static bending strength calculation)	8 mm

Width

Trimmed	1220 mm
Untrimmed	1240 mm

Length

Trimmed	2500 mm / 3050 mm
Untrimmed	2520 mm / 3070 mm

Tolerances¹ (for trimmed panels)

Thickness (at crest)	10 mm \pm 1.0 mm
Thickness (in valley)	8 mm -0.2 mm / +1.0 mm
Width	\pm 3 mm
Length	\pm 3 mm
Squareness	\pm 1.0 mm/m

Tolerances¹ (for untrimmed panels)

Thickness (at crest)	10 mm \pm 1.0 mm
Thickness (in valley)	8 mm -0.2 mm / +1.0 mm
Width	\pm 5 mm
Length	\pm 5 mm
Squareness	\pm 2.0 mm/m

Weight per m² (nominal, ambient)

18.6 kg/m²

Weight per panel (without pallet)

2500 x 1220 mm (trimmed)	56.7 kg
3050 x 1220 mm (trimmed)	69.2 kg
2520 x 1240 mm (untrimmed)	58.1 kg
3070 x 1240 mm (untrimmed)	70.8 kg

Packaging

Number of panels on pallet	30
----------------------------	----

Usable surface per pallet

2500 x 1220 mm (trimmed)	91.5 m ²
3050 x 1220 mm (trimmed)	111.6 m ²

Colour tolerance (CIELAB) ²

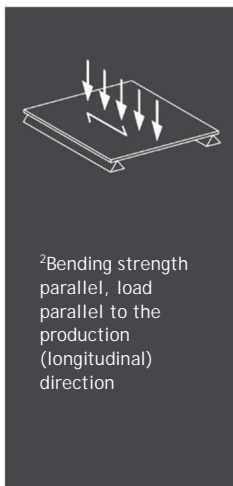
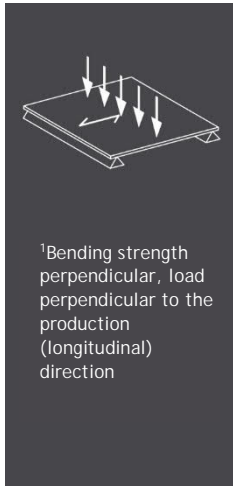
ΔL^* , brightness	± 2.5
---------------------------	-----------

¹ Factory tolerances for trimmed and untrimmed panels outperform the requirements of the EN12467 Level I and II dimensional tolerances, respectively.

² Colour tolerance are only to be measured on dry surfaces.

6. Material Properties

EQUITONE [Iunara] cladding panels conform to the requirements of EN 12467:2012+A1:2018 "Fibre cement flat sheets - Product specification and test methods". The results below are presented as defined by the standard.



Classification		
Type of product	EN12467	NT
Durability classification	EN12467	Category A
Strength classification	EN12467	Class 4
Dimensional tolerances for trimmed panels	EN12467	Level I
Dimensional tolerances for untrimmed panels	EN12467	Level II

Bending strength				
Mean modulus of rupture perpendicular ¹	ambient	EN12467	32.0	MPa
Mean modulus of rupture parallel ²	ambient	EN12467	22.0	MPa
Modulus of rupture ³	ambient	EN12467	27.0	MPa
Modulus of rupture ³	wet	EN12467	23.5	MPa
Characteristic modulus of rupture ³	ambient	EN12467	≥ 25.0	MPa

³ Average of perpendicular and parallel values (Mean of values in both directions)

Note: The characteristic values have been determined according to EN 17468-1:2022, chapter 9.1.2 as the 5 % quantile with 75 % probability.

Other physical requirements and characteristics				
Mean density	dry	EN12467	1630	kg/m ³
Moisture movement	30-90 %	EN12467	<0.08	%
Mean module of elasticity	ambient	EN12467	14,000	MPa
Water impermeability test		EN12467	No drops/Pass	
Characteristic dead load		-	0.20	kN/m ²

Durability requirements		
Freeze-thaw test for category A panel	EN12467	Pass
Heat-rain tests for category A panel	EN12467	Pass
Warm water test	EN12467	Pass
Soak-dry test	EN12467	Pass

Fire and safety		
Reaction to fire	EN13501-1	A2-s1,d0

Other characteristics				
Thermal movement	α	-	0.01	mm/mK
Thermal conductivity	λ	-	0.39	W/mK
Moisture content at 23°C, 80 % humidity		-	6	M.-%
Poisson's ratio	ν	-	0.2	-
Total volatile organic compounds (TVOC)			< 0.5	mg/m ³
Individual VOC		CDPH Method	< limit	
Formaldehyde			≤ 0.009	mg/m ³

Note to the units: 1 K (degree Kelvin) = 1°C, 1 MPa (Mega Pascal) = 1 N/mm², M.-% = mass percentage

Note: EQUITONE [Iunara] panels also comply with the requirements of ISO8336:2017 "Fibre cement flat sheets - Product specification and test methods"

Performance to AS/NZS 2908.2(**)

Classification		
Dimensional and geometrical tolerances	AS/NZS 2908.2	Compliant
Durability Classification	AS/NZS 2908.2	Type A
Bending Strength Classification	AS/NZS 2908.2	Category 5
Water Permeability	AS/NZS 2908.2	Compliant
Frost Resistance	AS/NZS 2908.2	Compliant
Warm-Water	AS/NZS 2908.2	Compliant
Heat-Rain	AS/NZS 2908.2	Compliant
Soak-Dry	AS/NZS 2908.2	Compliant

(**) Based on an independent assessment and ISO8336 independent testing

7. Fire performance

Australia

EQUITONE facade materials are fibre cement sheeting, and as such are deemed non-combustible in accordance with the following clauses of the NCC, and may be used wherever a non-combustible material is required.

- C2D10(6)(d) of the NCC 2022 and 2025 Volume 1
- H3D2(1)(d) of the NCC 2022 and 2025 Volume 2

Fire hazard properties of EQUITONE fibre cement façade materials are classified as a 'Group 1' material in compliance with AS5637.1 and Specification S7C4 - Wall and ceiling linings, of the NCC 2022 and 2025 Volume 1.

New Zealand

Cladding material classification:

- Limited combustible (classification A2 as per BS EN 13501-1:2018) in accordance with Subsection 8.1.1.3 of the Building Product Specifications
- Type 'A' with Peak Heat Release Rate (kW/m²) of less than (<) 100 and Total Heat Released (MJ/m²) of less than (<) 25 as determined in accordance with Subsection 8.4.1.3 of the Building Product

Specifications

Internal wall and ceiling lining material classification (Group Number):

- Group 1-S in accordance with AS 5637.1:2015 as specified in Subsection 8.5.3 of the Building Product Specifications

8. Advantages

Providing the application guidelines are followed, EQUITONE [Iunara] fibre-cement panels have the following superior mix of properties compared to other materials:

- Recyclable according to Environmental Product Declaration (EPD)
- Expected average reference service life of 50 years (based on EPD)
- Fire safe (no fire ignition, no spread of fire)
- Improved sound insulation of the facade
- UV-resistant
- Resistant to extreme temperatures
- Weather resistant
- Resistant to many living organisms (fungi, bacteria, insects, vermin, etc.)
- Resistant to many chemicals
- Strong and rigid panel
- Can be ideally combined with [tectiva] and [Iines] in the same colour

Working with the material:

- The material is easy to drill, cut and install with the proper tools
- Cut edges do not need to be sealed

9. Applications

EQUITONE [Iunara] can be used in several ventilated applications, including, but not limited to:

- Ventilated facade or rainscreen cladding
- Window and door reveal
- Exterior ceiling: decorative cladding of ceiling
- Soffits, eaves and verge boards
- Interior wall and ceiling lining (subject to local regulations)

For restrictions on the above-mentioned applications read the specific application guidelines.

The panels may be face or concealed fixed with Etex proprietary or recommended fixing solutions.

EQUITONE [Iunara] can not be used in the following applications, but not limited to: Internal applications exposed to direct moisture e.g. wet areas, situations with direct contact with standing snow or ice, applications where exposed to long term temperatures exceeding 80°C, and roof applications.

10. Health and Safety Aspects

EQUITONE [Iunara] contains finely ground sand (silica). In its manufactured state, it does not release airborne dust. However, inhalation of respirable crystalline silica (RCS) is hazardous and can cause serious lung and respiratory diseases, including cancer, particularly after prolonged exposure without adequate controls. The risks associated with RCS arise during installation activities such as cutting, rebating, drilling,

routing, crushing, sanding, cleaning up, disposing of, or relocating dust. It is essential to be mindful of tasks that generate and mobilise dust before, during, and after installation.

A P2 or higher-grade respirator must be worn when working with this material. Cutting must be carried out outdoors or in a well-ventilated, controlled environment. For more information, please visit www.equitone.com for the most recent Safety Information Sheet.

11. Maintenance and Cleaning

Refer to the relevant "EQUITONE Cleaning and Maintenance Information" Guide.

12. Certification



EQUITONE façade materials and systems are CodeMark certified in Australia and New Zealand. For more details, please refer to the CodeMark certificates available at www.equitone.com.

The manufacturer can - within the framework of the European Regulation N° 305/2011 (CPR) - present the Declaration of Performance (DOP) of the product such confirming that the product has a CE marking. The CE marking guarantees that the product is in accordance with the basic requirements determined by the harmonized European standard and applicable to the product.

The Declaration of Performance is presented in accordance with the CPR and can be found at www.equitone.com.

The manufacturing facility holds the latest versions of the following ISO certificates

- ISO 9001 Quality Management System
- ISO 14001 Environmental Management System
- ISO 45001 Occupational Health and Safety

EQUITONE [Iunara] is certified with an Environmental Product Declaration according to ISO 14025 or EN 15804. The life cycle assessment includes raw material and energy production, the actual manufacturing phase, and the use phase of the fibre cement panels. More information available in the Material Sustainability Datasheet. EQUITONE [Iunara] is Cradle to Cradle Certified at the Bronze level.

13. Information



Please visit www.equitone.com for contact details and further information and technical documents.

Disclaimer

The information in this document is correct at time issuing. However, due to our committed program of continuous material and system development we reserve the right to amend or alter the information contained therein without prior notice. Please visit www.equitone.com to ensure you have the most current version. All figures contained in this document are illustrations and should not be used as construction drawings. This information is supplied in good faith and no liability can be accepted for any loss or damage resulting from its use. This document is protected by international copyright laws. Reproduction and distribution in whole or in part without prior written permission is strictly prohibited. EQUITONE and logos are trademarks of Etex NV or an affiliate thereof. Any use without authorisation is strictly prohibited and may violate trademark laws.



www.equitone.com