



Western Australia

SCHOOLS &
COMMUNITY
GROUPS

SURF LIFE SAVING WA
**SOUTH WEST
RECREATIONAL CAMP &
DEVELOPMENT CENTRE**



SUPPORTED BY lotterywest



HISTORY & OVERVIEW

Surf Life Saving WA commenced the construction of the South West Recreational Camp & Development Centre in 2021 and it was officially opened in 2023.

The Centre is a key element of Surf Life Saving WA's volunteer development and engagement strategy, supporting the development of volunteers and increasing opportunities for engagement and social inclusion.

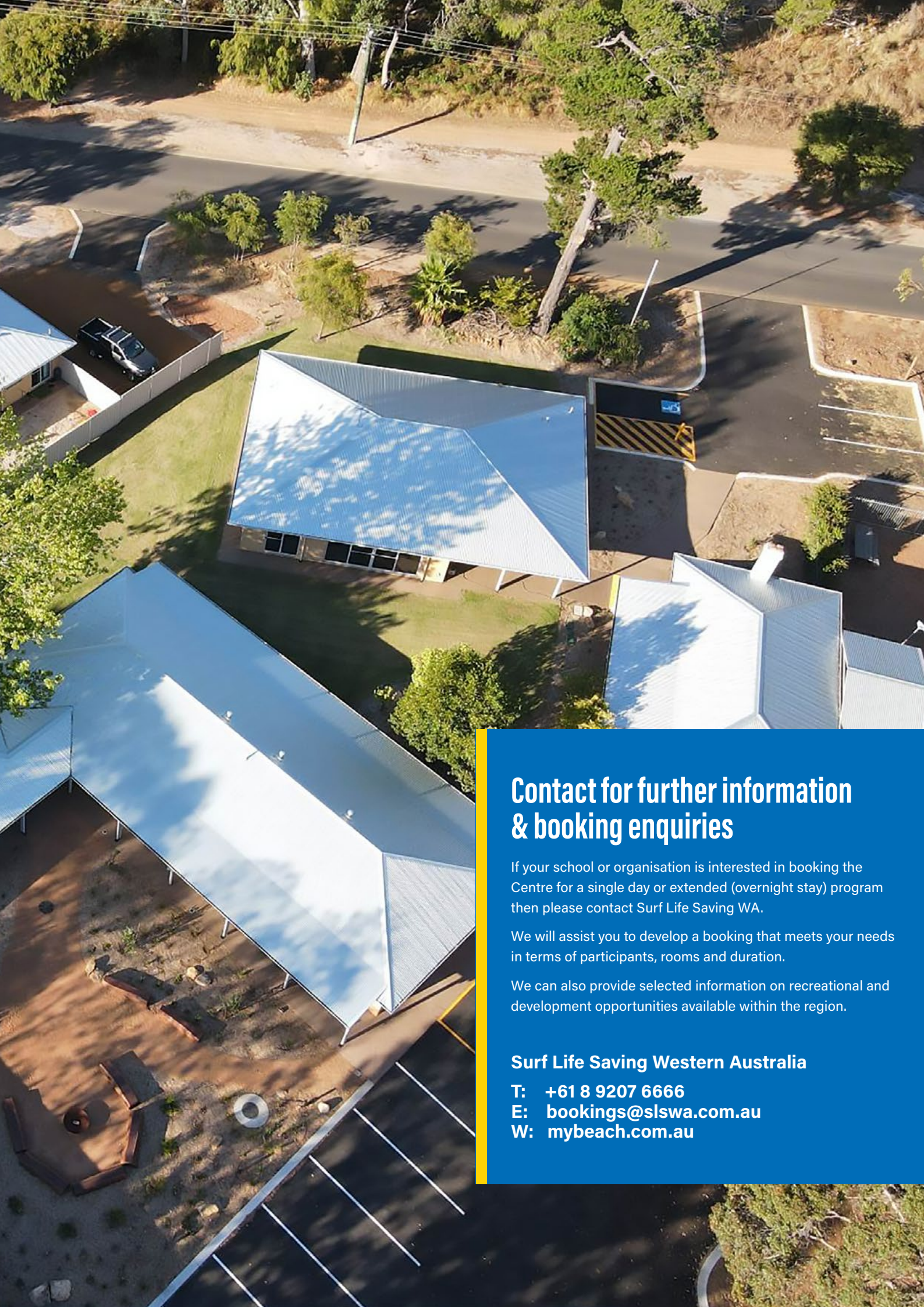
Established to provide amazing experiences and development opportunities for students and teachers, the Centre is also available for use by like minded community organisations and schools.

Since opening, it has already hosted numerous school, sporting and emergency service groups.

Sitting on two acres in the heart of Margaret River, this unique setting provides wonderful opportunities for training and development activities in a purpose-built facility with access to beaches and other attractions of the region.

An Onsite Manager will welcome guests and handle all onsite enquiries and issues during your stay.

Surf Life Saving WA (SLSWA) received a grant from Lotterywest towards the the construction of the Centre and we are extremely grateful for this support.



Contact for further information & booking enquiries

If your school or organisation is interested in booking the Centre for a single day or extended (overnight stay) program then please contact Surf Life Saving WA.

We will assist you to develop a booking that meets your needs in terms of participants, rooms and duration.

We can also provide selected information on recreational and development opportunities available within the region.

Surf Life Saving Western Australia

T: +61 8 9207 6666

E: bookings@slswa.com.au

W: mybeach.com.au

FACILITIES & ACCOMMODATION

FOR PROGRAMS & RECREATIONAL CAMPS UP TO 90 PARTICIPANTS





Oval

FACILITIES

The Centre consists of the following buildings and facilities, all of which are available for booking:

Training Room

The Training Room is available for meetings, training courses and can also be used as a lounge and recreation area when larger groups are staying at the Centre.

Tables, chairs, and audio-visual equipment are available to use in the Training Room.



Training Room

Commercial Kitchen & Dining

Groups are able to self cater with a full commercial kitchen available, including ovens and dishwashers. BBQs are also available directly outside the Dining Room.

Tables, chairs, and audio-visual equipment are available to use in the Dining Room.



Commercial Kitchen & Dining

Pool & Oval

There is a Pool outside the Dining Room and a large oval to recreate on with sporting equipment available on request. The Margaret River Recreation Centre, Pool and Ovals are within walking distance.

Parking

There is a spacious and secure parking area available onsite.



Pool

ACCOMMODATION

The Centre provides two accommodation options available for bookings:

Margaret River Lodge

For up to 74 people in dormitory-style accommodation.

Boodjidup House

Self-contained house for up to 16 people in twin share rooms.



Parking

Margaret River Lodge

The Margaret River Lodge consists of three accommodation wings that collectively house 15 dormitory-style rooms with a total of 74 beds, predominantly bunk-style. There are male and female change room facilities and an accessible change room.

Guests staying at the Lodge have access to the fully equipped commercial kitchen and dining hall, barbecues, swimming pool and a large outdoor recreation area with sporting equipment available for use.

In the centre of the Lodge grounds is the Yarning Circle – a special place to meet, share stories and toast marshmallows around the campfire.

The Margaret River Lodge is the ideal location to accommodate larger groups.



MARGARET RIVER LODGE

C Wing - max. 28 beds

| | |
|--------------------|--------------------------|
| Dorm #12 4 Beds | Dorm #11 4 Beds |
| Dorm #13 4 Beds | Accessible Changeroom |
| Female Bathroom | |
| Male Bathroom | |
| Dorm #14 4 Beds | Dorm #10 4 Beds |
| Dorm #15 4 Beds | Dorm #9 4 Beds |

A Wing - max. 32 beds

| |
|-------------------|
| Dorm #1 8 Beds |
| Dorm #2 8 Beds |
| Female Bathroom |
| Male Bathroom |
| Dorm #3 8 Beds |
| Dorm #4 8 Beds |

Total of 15 dorms and 74 beds

2 x 3-bed dorms

9 x 4-bed dorms

4 x 8-bed dorms

B Wing - max. 14 beds

| | | | |
|-------------------|-------------------|-------------------|-------------------|
| Dorm #8 4 Beds | Dorm #7 3 Beds | Dorm #6 3 Beds | Dorm #5 4 Beds |
|-------------------|-------------------|-------------------|-------------------|

| | A Wing 4 x 8-bed dormitories (total 32 beds) | B Wing 2 x 3 bed dormitories and 2 x 4-bed dormitories (total 14 beds) | C Wing 7 x 4-bed dormitories (total 28 beds) |
|----------------------|---|---|---|
| CAPACITY | 32 people | 14 people | 28 people |
| TYPE | Single bunk beds | Single bunk beds and King Single beds | Single bunk beds |
| CONFIGURATION | 4 dorms with 4 bunk beds per dorm (8 beds in total per dorm) | 2 dorms with 3 beds per dorm (1 bunk bed and 1 king single bed) 2 dorms with 4 beds per dorm (2 bunk beds) | 7 dorms with 2 bunk beds per dorm (4 beds in total per dorm) |
| BATHROOMS | 1 x Male and 1 x Female bathroom | Access bathrooms in A or C wing | 1 x Male, 1 x Female bathroom and 1 x Accessible bathroom |
| MIN STAY | 1 night | 1 night | 1 night |

| ROOM RATES ^ | 1st night * | Per additional night |
|---------------------|-------------|----------------------|
| 3 BED DORM | \$ 125 | \$ 75 |
| 4 BED DORM | \$ 160 | \$ 95 |
| 8 BED DORM | \$ 300 | \$ 160 |

^ Rooms are charged per room. Not per person.

* 1st night includes cleaning fee

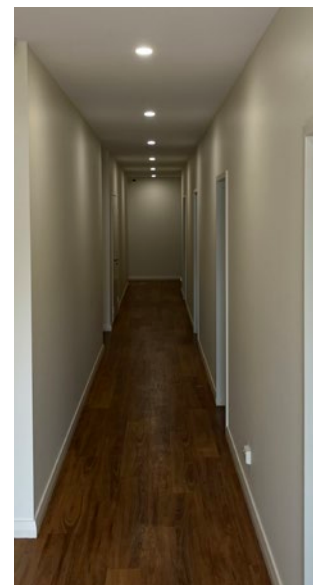
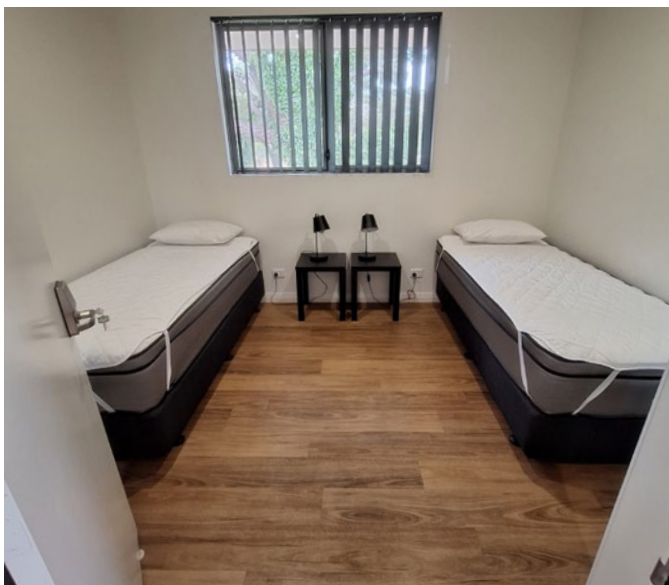
Boodjidup House

Boodjidup House is a self-contained house separate from the Margaret River Lodge. It can host up to 16 people in twin share rooms with its own bathrooms, kitchen facilities, dining area and lounge room.

The whole house must be booked, and individual rooms cannot be booked separately. Boodjidup House is ideal for smaller groups seeking a self-contained accommodation solution.

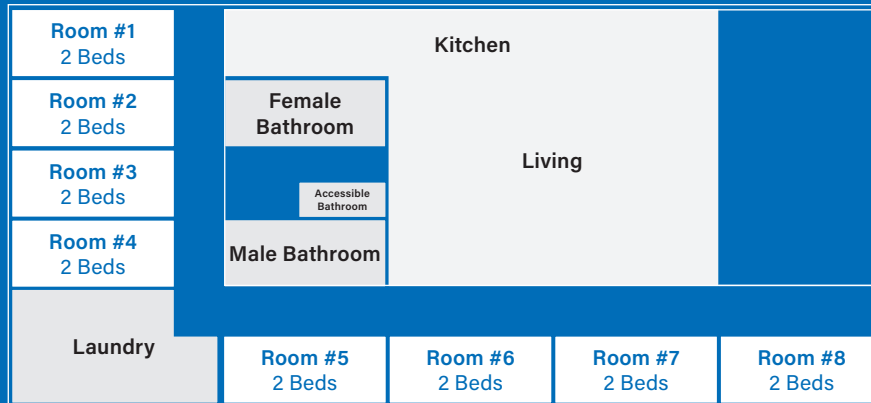
Guests staying at Boodjidup House have access to barbecues, the swimming pool, and a large outdoor recreation area with sporting equipment available for use.

Boodjidup House is not available for bookings over the summer holiday period as it is utilised by SLSWA during this period.



BOODJIDUP HOUSE

Total of 8 rooms and 16 beds



| | |
|----------------------|---|
| CAPACITY | 16 beds |
| TYPE | King single bed |
| CONFIGURATION | 8 rooms with two king single beds |
| BATHROOMS | 1 x Male, 1 x Female bathroom and 1 x Accessible bathroom |
| MIN STAY | 1 night |

| RATES | 1st night * | Per additional night |
|--------------|-------------|----------------------|
| HOUSE | \$ 1,000 | \$ 720 |

* 1st night includes cleaning fee

LOCATION

Conveniently located between the Margaret River town centre & beaches of the region.

Corner of Samworth Street and Railway Terrace.

220 Railway Terrace, Margaret River WA 6285







Western Australia

Surf Life Saving WA

Head Office

7 Delawney Street | P +61 8 9207 6666
Balcatta WA 6021 | W mybeach.com.au

South West Recreational Camp & Development Centre

220 Railway Terrace
Margaret River WA 6285

 [surflifesavingwa](https://www.facebook.com/surflifesavingwa)

 [@slswa](https://twitter.com/slswa)

 [@slswa](https://www.instagram.com/slswa)

 [surflifesavingwa](https://www.youtube.com/surflifesavingwa)