



# Cosmograph Daytona

Oyster, 40 mm, Oystersteel

**The Oyster Perpetual  
Cosmograph Daytona in  
Oystersteel with a white  
dial and contrasting  
counter rings. It features  
an Oyster bracelet and a  
black Cerachrom bezel  
with tachymetric scale.**



THE TACHYMETRIC SCALE

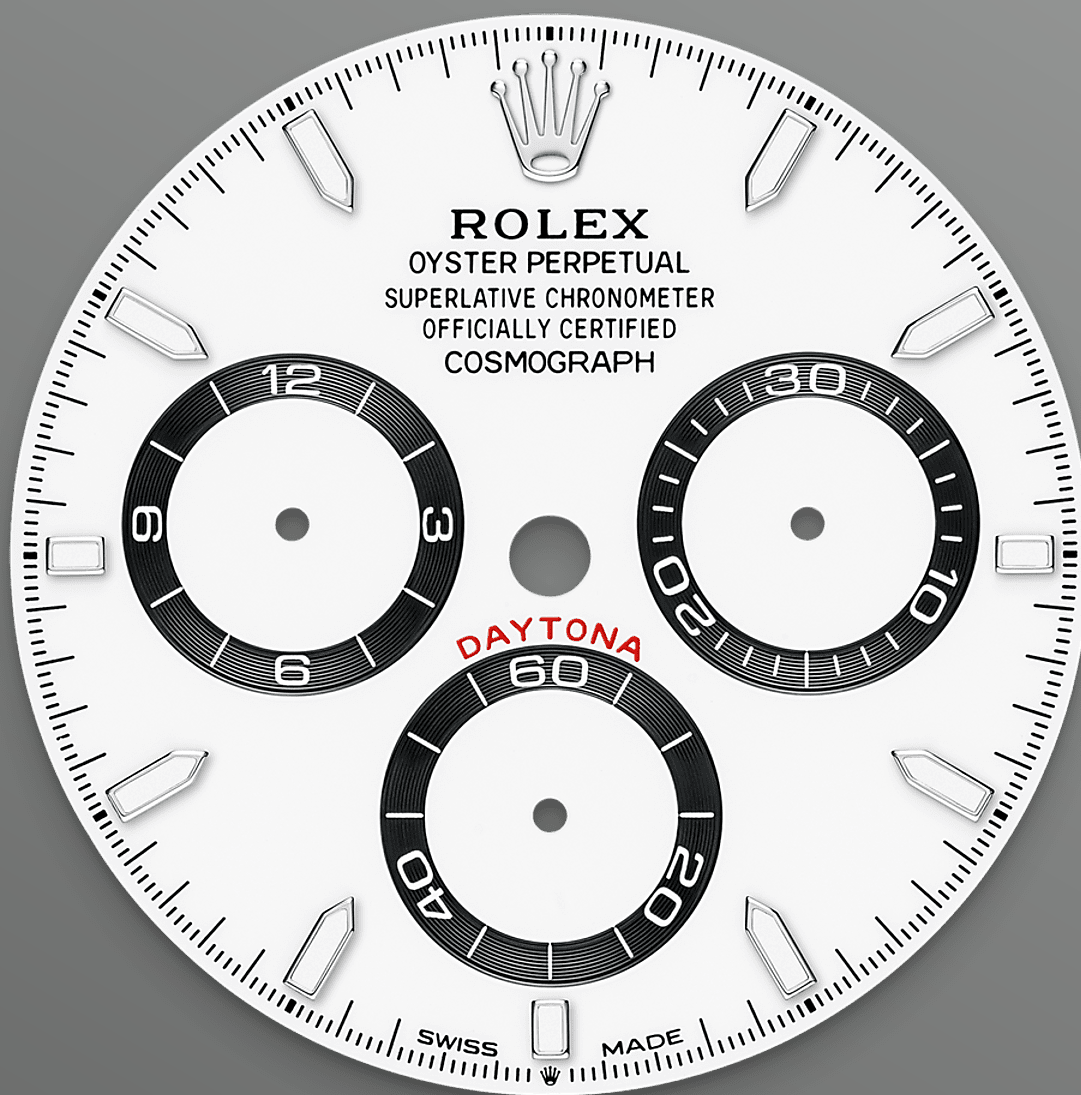
# High-performance chronograph

A key part of the model's identity is the bezel moulded with a tachymetric scale for measuring average speeds of up to 400 miles or kilometres per hour. Blending high technology with sleek aesthetics, the black bezel is reminiscent of the 1965 model that was fitted with a black Plexiglas bezel insert.

The monobloc Cerachrom bezel in high-tech ceramic offers a number of advantages: it is







WHITE DIAL

## With chronograph counters

This model features a white dial with snailed counters, 18 ct gold applique hour markers and hands with a Chromalight display, a highly-legible luminescent material.

The dial allows drivers to accurately map out their track times and tactics without fail.

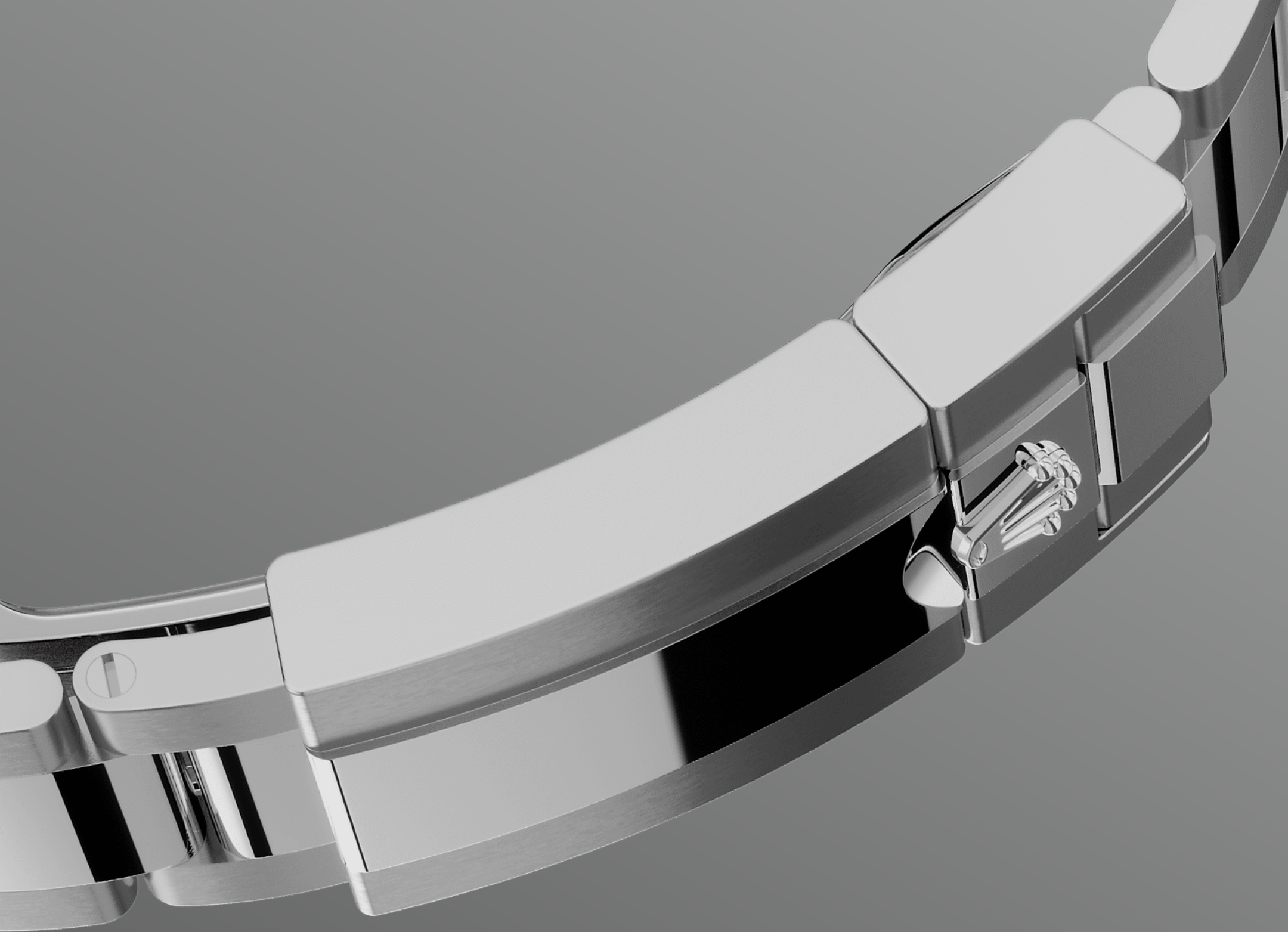


OYSTERSTEEL

## Highly resistant to corrosion

Rolex uses Oystersteel for its steel watch cases. Specially developed by the brand, Oystersteel belongs to the 904L steel family, alloys most commonly used in high-technology and in the aerospace and chemical industries, where maximum resistance to corrosion is essential.

Oystersteel is extremely resistant, offers an exceptional finish once polished and maintains its beauty even in the harshest environments.



THE OYSTER BRACELET

# Alchemy of form and function

The design, development and production of Rolex bracelets and clasps, as well as the stringent tests they face, involve advanced high technology. And, as with all the components of the watch, aesthetic controls by the human eye guarantee impeccable beauty.

The Oyster bracelet is a perfect alchemy of form and function. First introduced in the late 1930s, this particularly robust and comfortable metal







# More Cosmograph Daytona technical details

Reference 126500LN

## Model Case

---

### Type

Oyster, 40 mm, Oystersteel

### Diameter

40 mm

### Material

Oystersteel

### Bezel

Black monobloc Cerachrom bezel in ceramic with moulded tachymetric scale

### Oyster Architecture

Monobloc middle case, screw-down case back and winding crown

### Winding Crown

Screw-down, Triplock triple waterproofness system

### Crystal

Scratch-resistant sapphire

### Water Resistance

Waterproof to 100 metres / 330 feet

## Movement

---

### Type

Perpetual, mechanical chronograph, self-winding

### Calibre

4131, manufacture Rolex

### Precision

-2/+2 sec/day, after casing

### Oscillator

Paramagnetic blue Parachrom hairspring. High-performance Paraflex shock absorbers

**Winding**

Bidirectional self-winding via  
Perpetual rotor

**Power reserve**

Approximately 72 hours

**Functions**

Centre hour and minute hands,  
small seconds hand at 6 o'clock.  
Chronograph via centre seconds  
hand, 30-minute counter at 3  
o'clock and 12-hour counter at 9  
o'clock. Stop seconds for exact  
time setting

**Bracelet**

---

**Type**

Oyster, three-piece solid links

**Clasp**

Folding Oysterlock safety clasp with  
Easylink 5 mm comfort extension  
link

**Bracelet Material**

Oystersteel

**Dial**

---

**Type**

White, black counter rings

**Details**

Highly legible Chromalight display  
with long-lasting blue luminescence

**Certification**

---

**Type**

Superlative Chronometer (COSC +  
Rolex certification after casing)

# Explore and discover more on Rolex.com

**All intellectual property rights such as trademarks, service marks, trade names, designs and copyrights are reserved.**

Nothing contained in this website may be reproduced without written permission. Rolex reserves the right at all times to modify the models featured in the present website.

