



Explorer II

Oyster, 42 mm, Oystersteel

**This Oyster Perpetual
Explorer II in
Oystersteel with an
Oyster bracelet features
a white dial with an
arrow-shaped 24-hour
hand and hour markers
with a Chromalight
display.**

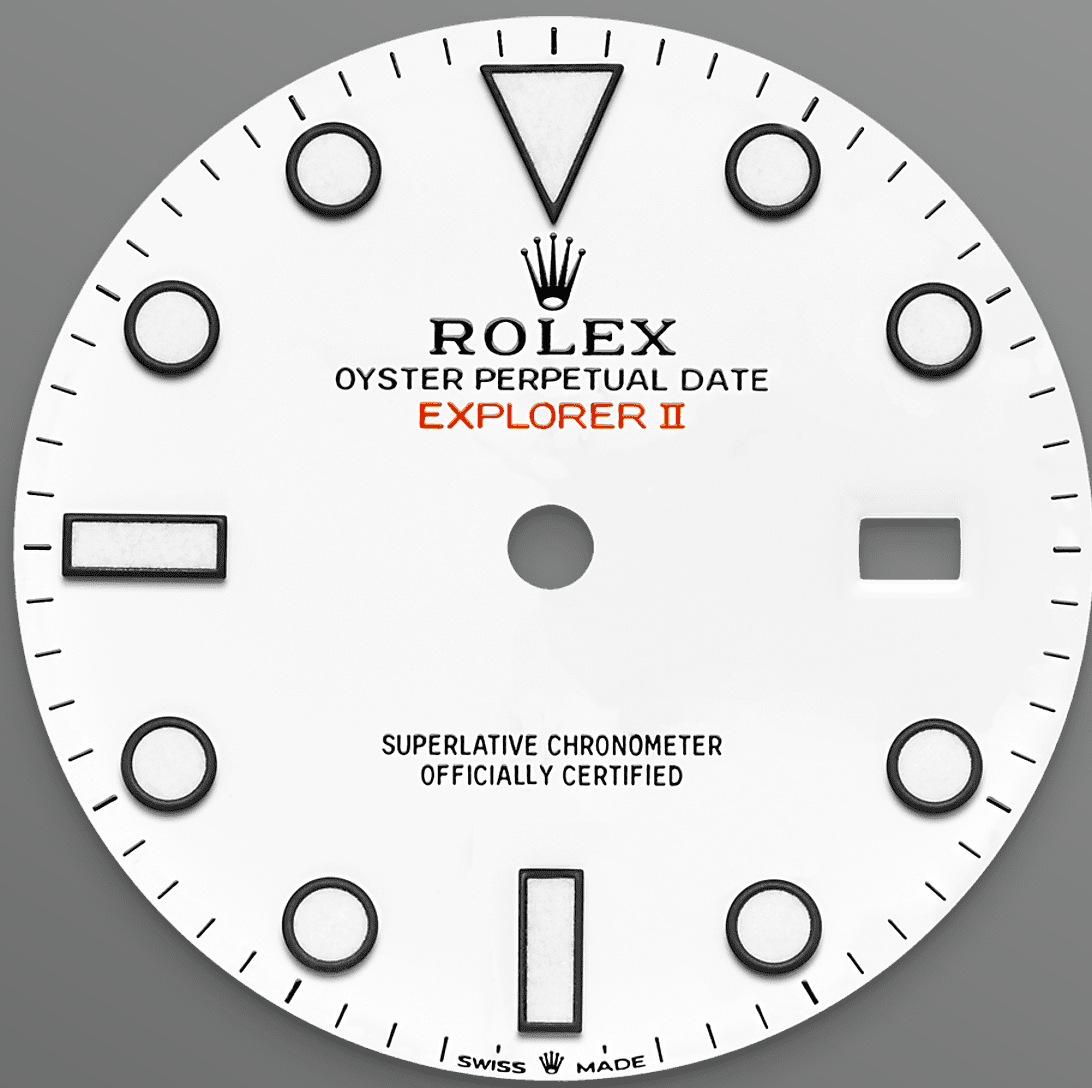


24-HOUR BEZEL

Reliability in the toughest conditions

The Explorer II is equipped with an additional 24-hour display; a dedicated hand circles the dial in 24 hours rather than the usual 12, pointing to a fixed bezel with 24 hour graduations.

This function enables the wearer to distinguish the hours of the day from the hours of the night, an essential feature for those who venture into environments where darkness reigns supreme –



WHITE DIAL

Distinguishing day from night

The Explorer II features a date display, an additional orange 24-hour hand and a fixed bezel with 24-hour graduations, enabling day to be distinguished from night.

It became the watch of choice for speleologists, volcanologists and polar explorers. Its hour markers and hands feature a highly-legible Chromalight display with long-lasting blue luminescence.

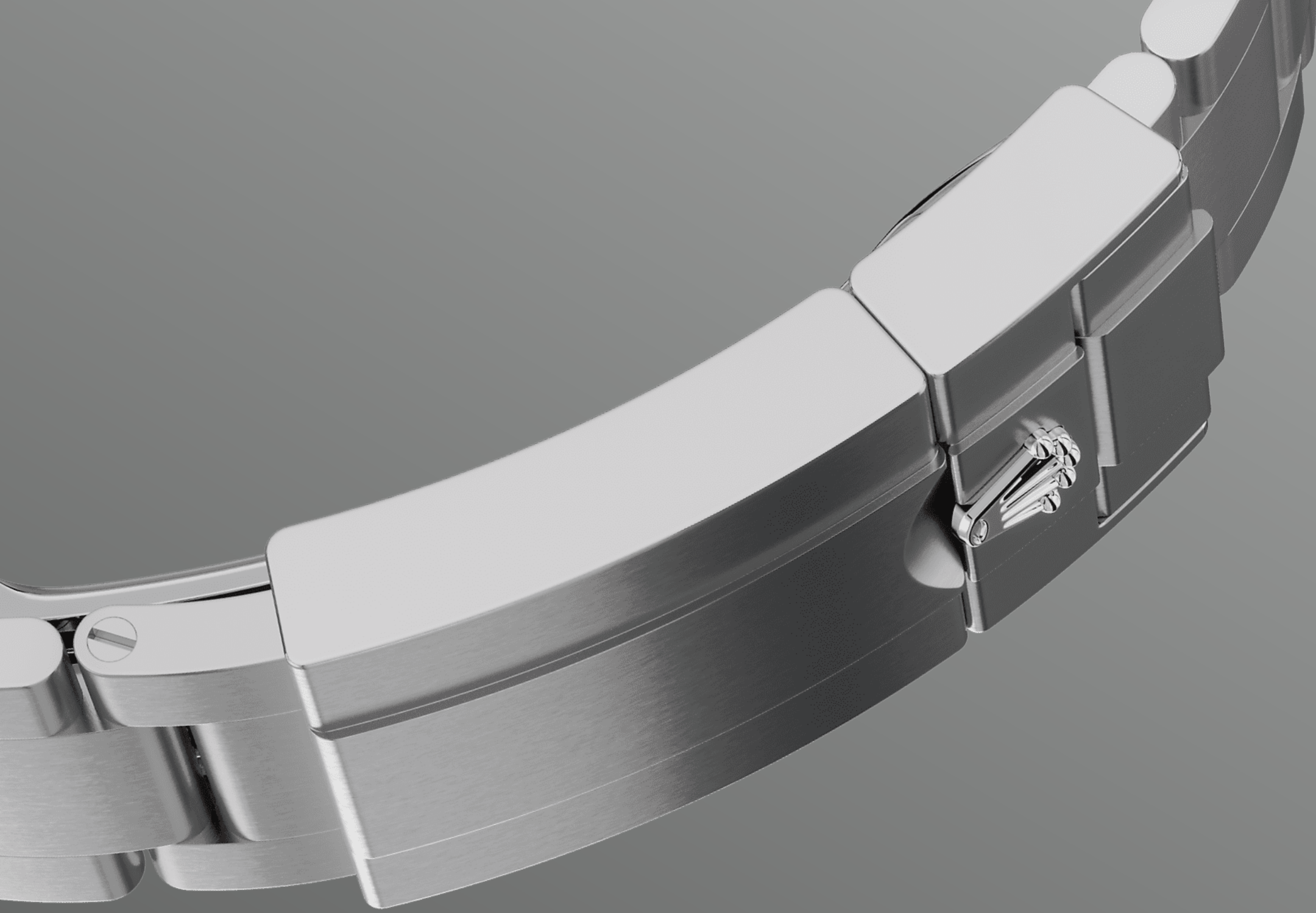


OYSTERSTEEL

Highly resistant to corrosion

Rolex uses Oystersteel for its steel watch cases. Specially developed by the brand, Oystersteel belongs to the 904L steel family, alloys most commonly used in high-technology and in the aerospace and chemical industries, where maximum resistance to corrosion is essential.

Oystersteel is extremely resistant, offers an exceptional finish once polished and maintains its beauty even in the harshest environments.



THE OYSTER BRACELET

Alchemy of form and function

The Oyster bracelet is a perfect alchemy of form and function, aesthetics and technology, designed to be both robust and comfortable. It is equipped with an Oysterlock folding clasp, which prevents accidental opening and the Easylink comfort extension link, also exclusive to Rolex.

This ingenious system allows the wearer to increase the bracelet length by approximately 5

More Explorer technical details

Reference 226570

Model Case

Type

Oyster, 42 mm, Oystersteel

Diameter

42 mm

Material

Oystersteel

Bezel

Fixed, 24-hour graduated

Oyster Architecture

Monobloc middle case, screw-down case back and winding crown

Winding Crown

Screw-down, Twinlock double waterproofness system

Crystal

Scratch-resistant sapphire, Cyclops lens over the date

Water Resistance

Waterproof to 100 metres / 330 feet

Movement

Type

Perpetual, mechanical, self-winding, GMT function

Calibre

3285, Manufacture Rolex

Precision

-2/+2 sec/day, after casing

Oscillator

Paramagnetic blue Parachrom hairspring. High-performance Paraflex shock absorbers

Winding

Bidirectional self-winding via
Perpetual rotor

Power reserve

Approximately 70 hours

Functions

Centre hour, minute and seconds
hands. 24-hour display. Second
time zone with independent rapid-
setting of the hour hand.

Instantaneous date. Stop-seconds
for precise time setting

Bracelet

Type

Oyster, three-piece solid links

Clasp

Folding Oysterlock safety clasp with
Easylink 5 mm comfort extension
link

Bracelet Material

Oystersteel

Dial

Type

White

Details

Highly legible Chromalight display
with long-lasting blue luminescence

Certification

Type

Superlative Chronometer (COSC +
Rolex certification after casing)

Explore and discover more on Rolex.com

All intellectual property rights such as trademarks, service marks, trade names, designs and copyrights are reserved.

Nothing contained in this website may be reproduced without written permission. Rolex reserves the right at all times to modify the models featured in the present website.

