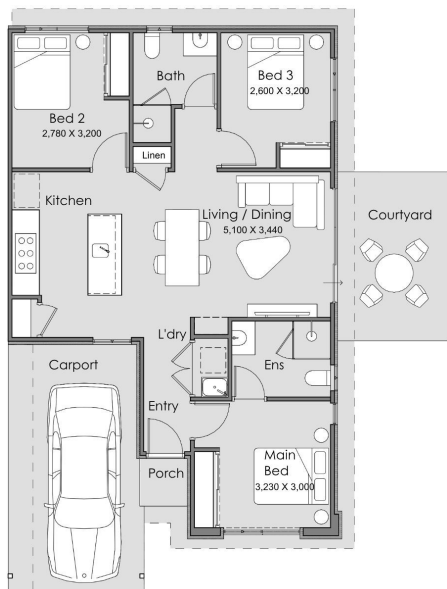


## Sora - Sienna Wood - Velocity

2 2 1 83 sqm

Facade name: 513

### House Plan:



### LOT #519

Sienna Wood

Address: Whitsunday Drive, Hilbert, 6112



162 m<sup>2</sup>

House and land package price:

From **\$498,990\***

### About package:

Space saver design perfect for first home buyers. Entering the home you are greeted by the main bedroom with built in robe and ensuite. The kitchen is easily accessible from the entry and carport, and leads on to the living and dining spaces. The minor bedroom has a built in robe for storage and is located next door to the main bathroom.

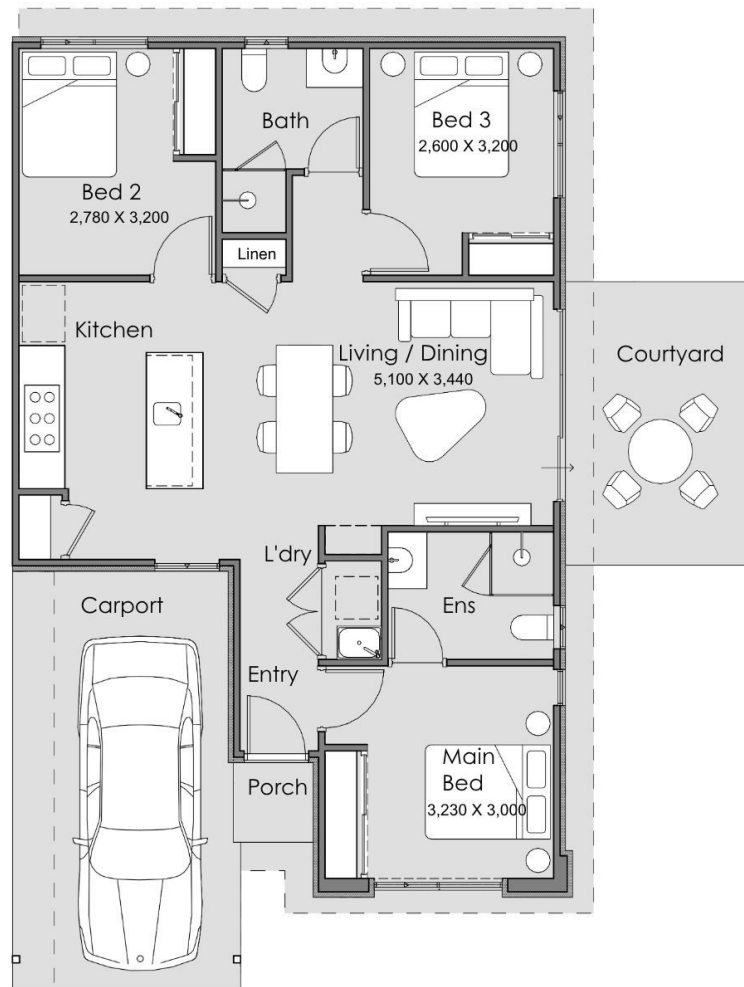
### ENQUIRE NOW:

Velocity Sales • P: 0411 266 118 • E: [velocity@summithomes.com.au](mailto:velocity@summithomes.com.au)

Images depicted on this site are for illustration purposes only. Facades and other images of homes and land estates may include optional upgrades, additional fixtures, finishes and home or estate features that are not included in the base price of the home or land package such as landscaping, feature tiling, decking, furnishing, feature lighting, pools, etc. Land estate pricing and plans are subject to developer guidelines and may vary at any time.

## House Features:

✓ AVAILABLE NOW



## ENQUIRE NOW:

Velocity Sales • P: 0411 266 118 • E: [velocity@summithomes.com.au](mailto:velocity@summithomes.com.au)

Images depicted on this site are for illustration purposes only. Facades and other images of homes and land estates may include optional upgrades, additional fixtures, finishes and home or estate features that are not included in the base price of the home or land package such as landscaping, feature tiling, decking, furnishing, feature lighting, pools, etc. Land estate pricing and plans are subject to developer guidelines and may vary at any time.