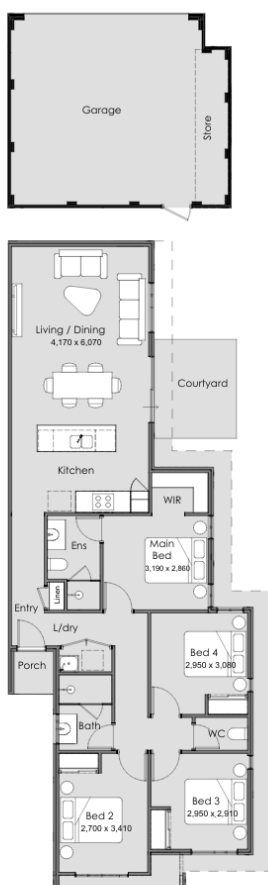


# 5100 The Glades - Velocity

4 2 2 144 sqm

Facade name: 5100

## House Plan:



## LOT #5100

The Glades, Byford

Address: Humming Street, Byford, 6122



249 m<sup>2</sup>

House and land package price:

From **\$704,990\***

## About package:

Four bedrooms line the front of the floorplan, creating a sense of balance and simplicity from the moment you step inside. The minor rooms are anchored by the main bathroom positioned between them—smart, streamlined, and designed to keep everyday life running smoothly.

Among them sits the main bedroom, elevated with a walk-in robe and a private ensuite. It's a calm, confident retreat that offers clarity and comfort before you move into the heart of the home.

And that heart sits at the back, where the kitchen, dining, and meals area open up in one generous sweep. This is where life gathers—light-filled, connected, and made for moments that bring people together. From here, the space flows effortlessly onto the courtyard, extending your living outdoors and giving you room to breathe, entertain, or simply enjoy a quiet pause.

## ENQUIRE NOW:

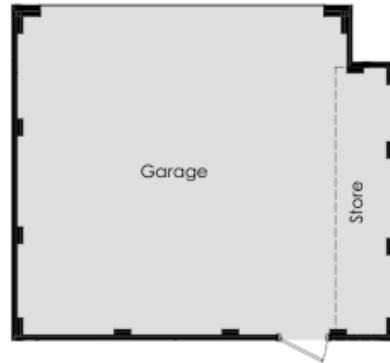
Velocity Sales • P: 0411 266 118 • E: [velocity@summithomes.com.au](mailto:velocity@summithomes.com.au)

Images depicted on this site are for illustration purposes only. Facades and other images of homes and land estates may include optional upgrades, additional fixtures, finishes and home or estate features that are not included in the base price of the home or land package such as landscaping, feature tiling, decking, furnishing, feature lighting, pools, etc. Land estate pricing and plans are subject to developer guidelines and may vary at any time.

Powered by **iBuildNew**

## House Features:

✓ AVAILABLE NOW



## ENQUIRE NOW:

Velocity Sales • P: 0411 266 118 • E: [velocity@summithomes.com.au](mailto:velocity@summithomes.com.au)

Images depicted on this site are for illustration purposes only. Facades and other images of homes and land estates may include optional upgrades, additional fixtures, finishes and home or estate features that are not included in the base price of the home or land package such as landscaping, feature tiling, decking, furnishing, feature lighting, pools, etc. Land estate pricing and plans are subject to developer guidelines and may vary at any time.