

Welcome to Minfos 5.0.2

This document provides an overview of the enhancements and resolved issues in this Minfos release.

How to update Minfos

1. At any point in the day, download the latest Minfos software.
 - a. On the Minfos Launch Pad, click the **File** menu, and select **Minfos Net Terminal**.
The Minfos Net Terminal window is displayed.
 - b. Click the **Connect** menu, and select **1. Internet**. The Online Menu is displayed.
 - c. Check the **1 New Minfos Software** check box, then click **Okay**.
2. When you're finished trading for the day, ensure there are zero connections to your Minfos server.
Your Minfos software will update automatically, overnight.
3. Check that your Minfos software successfully updated. On the Minfos Launch Pad, click the **Help** menu, then click **About Minfos Software**.
The About Minfos Software window is displayed and shows your current Minfos version in the **Applications Versions** box.

Disclaimer

Screen captures from Minfos are used in this document. While care is taken to use fictional data, some of these images might contain names, addresses, or other details of individuals and/or organisations. Any fictional or nonfictional names, addresses, drug histories, or other details about individuals or organisations are used for demonstration purposes only.

In this release

Welcome to Minfos 5.0.2.....	1
How to update Minfos	1
Enhancements.....	3
New visual themes available.....	3
Minfos themes.....	3
Stock Manager	5
Manual Update option is now the default.....	5
Supplier remains selected in Update Configuration	5
Resolved Issues	6
Dispense	6
Stock Manager	6
Till.....	6
Multistore.....	6

Enhancements

New visual themes available

You can now customise how your Minfos looks by selecting from our new visual themes.

- Theme for windows and dialog boxes
- Background colour of the Launchpad and modules
- Module footer

We created these themes based on Microsoft Office design to give you an industry standard experience.

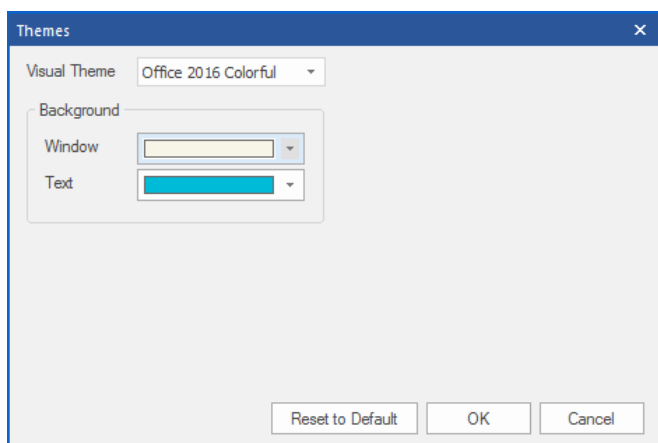
Minfos themes

You can choose to use the Minfos default theme or customise from the two themes available:

- Office 2016 White
- Office 2016 Dark Grey

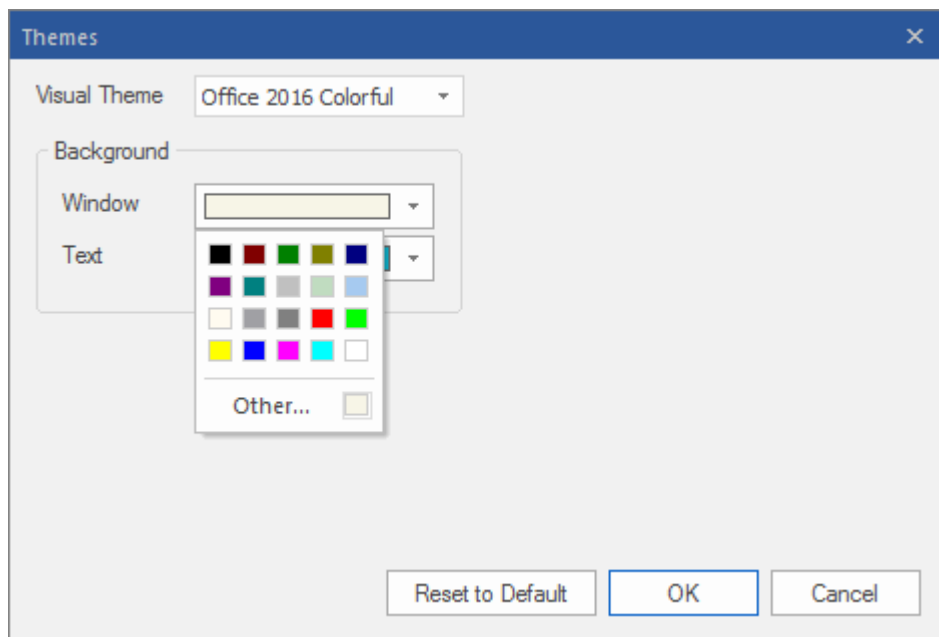
To set your Minfos' theme:

1. First, you will need to configure your windows and dialog boxes theme, go to Minfos **Launchpad**:
 - a. Select **Special Menu**, select **Utilities** and then **Theme Icon**
 - b. Select your preferred **Visual Theme**
2. Second, to configure your Launchpad and module background colour, go to **Background** frame:
 - a. Select a colour from the **Window** dropdown (see next page)
3. Third, to configure the colour of the footer of each Module, go to the **Background** frame:
 - a. Go to **Text** dropdown to set your preferred text colour (see next page)
4. To finalise your update, click **OK** and then, restart your **Minfos** to apply the changes

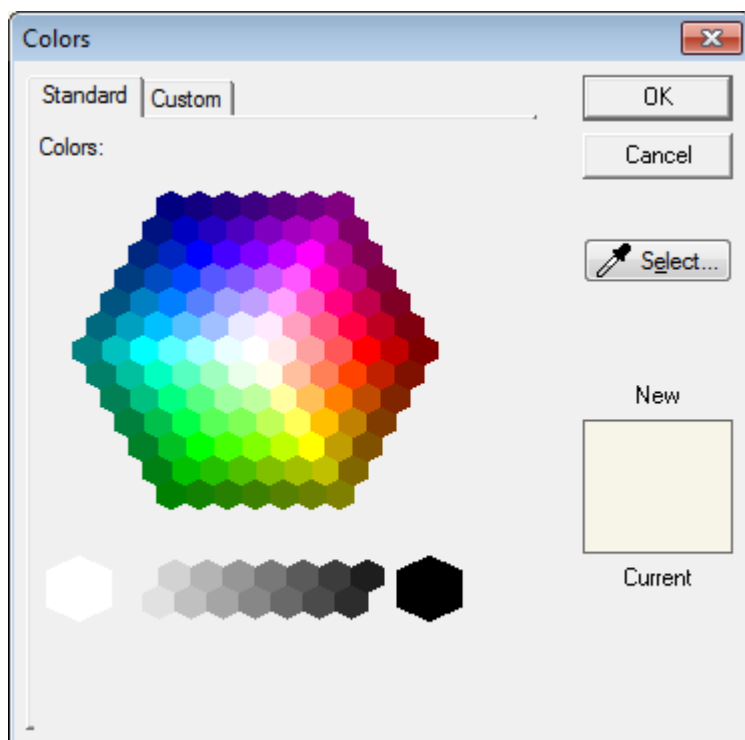


There are two ways you can select a colour:

1. You can use the **Windows** or **Text** dropdown option to select a colour and then, click **OK**



2. Or if you want more colour options, you can select **Other** in the Windows or Text dropdown
 - a. Pick a **colour** and then, click **OK**

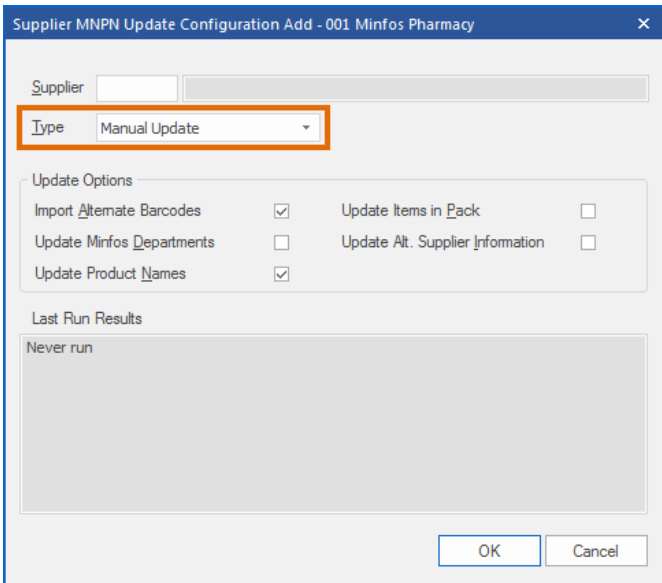


Note: You can change the colours back to the Minfos theme by selecting the 'Reset to Default' button.

Stock Manager

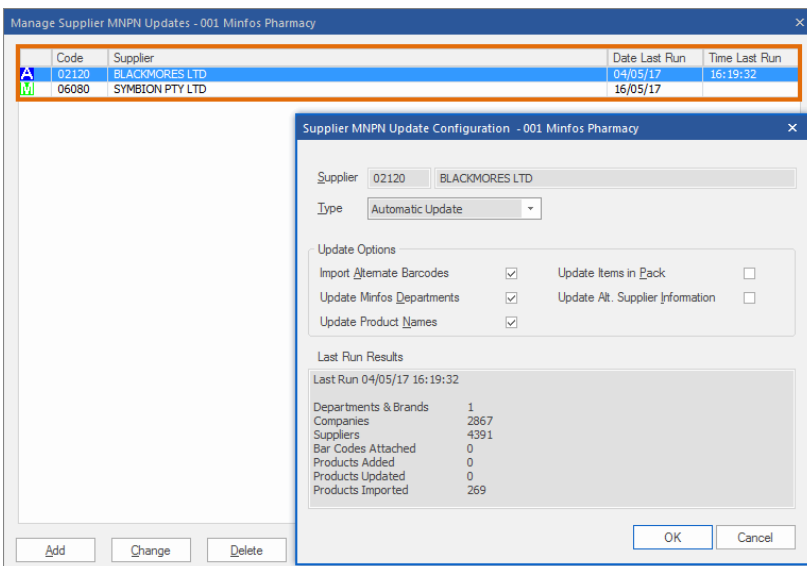
Manual Update option is now the default

When adding a supplier to run an MNPN update, the **Manual Update** option is now selected by default in the **Type** dropdown box.



Supplier remains selected in Update Configuration

The selected supplier now remains selected after making changes and exiting from the **Update Configuration** window.



Resolved Issues

Dispense

- Minfos will no longer revert the price when tabbing through a CTG script.
- After using the [Alt+M] shortcut in Dispense, Minfos will now return the focus to the Dispense form.

Stock Manager

- Minfos will no longer display an incorrect unit cost when applying 100% discount to the whole order.
- Minfos will now remove a product as a **Companion** or **Alternate** product when deleted.

Till

- Minfos will now deduct the Customer Account correctly when paying a layby with a Credit Card.

Multistore

- Minfos will now display the Multistore **Product Sales Report** correctly.
- Minfos will now display the correct **Retail Ex** value in the **SOH** tab in **Product Maintenance**.