

CRANA

improving
remote
health

plus



39th CRANaplus CONFERENCE

4-6 OCTOBER 2022, HILTON HOTEL, ADELAIDE

POCKET PROGRAM

SPONSORS

Principal Partner



Major Partner



**Flinders
University**

Gala Dinner Sponsor



Coffee Cart Sponsor



CATSINaM
CONGRESS OF ABORIGINAL AND TORRES
STRAIT ISLANDER NURSES AND MIDWIVES

Unity and Strength through Caring

Catering Sponsor



WELCOME MESSAGE

On behalf of the Board of Directors and the CRANaPlus team, I welcome you to the 39th CRANaPlus conference in beautiful Adelaide. These are the traditional lands of the Kaurna People and we pay our respects to them as the First Peoples and acknowledge their Elders both past and present. I hope that you have the opportunity to explore and experience more of the area whilst attending the conference.

This year's conference theme is Passion. Purpose. Influence. Impact.

Through our conference, we aim to build on our strengths to improve the health and wellbeing of rural and remote Australians, especially for our First Peoples. By sharing experiences, learning together, and inspiring one another, we will foster passion, maintain purpose, build influence, and increase impact.

I hope that the presentations inspire and engage you and you leave refreshed and invigorated.

Over the next few days take the opportunity to enjoy connecting with colleagues and friends. It feels like such a long time since we have been able to meet as a professional group.

Here at CRANaPlus we are so glad to be able to deliver a face-to-face event again this year. Our return has been supported by our principal partner, Adelaide Convention Bureau, our major partner Flinders University Rural and Remote Health, our gala dinner sponsor James Cook University, our coffee cart sponsor CATSINaM, and all our sponsors and exhibitors. Thanks for getting behind the workforce by supporting this event!

Delegates, be sure to mingle with the exhibitors and head to the CRANaPlus booths – we have an education showcase area, a wellbeing space, and lots of opportunities to engage with the team.

Please come over and say hello, I look forward to meeting you.

Warm regards,

Katherine Isbister
CEO

Career Up here

For Nursing and Midwifery
jobs learn more

SCAN HERE



Torres and Cape
Hospital and Health Service



**Queensland
Government**

GENERAL INFORMATION

Conference Venue

Hilton Hotel Adelaide

233 Victoria Square, Adelaide

Ballroom BC	Plenary/ Gala Dinner
Gallery	Trade Exhibition
Suite 3	Mental Health and Wellbeing Space
Ballroom A	CRANaplus Education Space & CRANaplus Corporate Exhibit

Registration

Tuesday	1500 – 2000
Wednesday	0730 – 1630
Thursday	0800 – 1600



Wi-Fi

Complimentary Wi-Fi will be available throughout the conference.

Special Requirements

Every effort has been made to ensure delegates with special requirements are catered for. Should you require any assistance please see the Conference Design Team at the Registration Desk.

Network	CRANaplus Conference
Password	2022CRANA



**CONFERENCE
DESIGN**

Conference Design Pty Ltd
Level 6/152 Macquarie Street
Hobart TAS 7000
Australia
mail@conferencedesign.com.au
www.conferencedesign.com.au

EXHIBITORS

#	ORGANISATION
01	COFFEE CART
02	Nursing and Midwifery Board AHPRA
03	caring@home Palliative Care Project
04	Downs Nursing Agency
05	Alliance Rural & Remote Health
06	Australian Indigenous Health/InfoNet
07	Rural Workforce Agencies
08	CareSearch
09	Kimberley Aboriginal Medical Service
10	YNA Your Nursing Agency
11	CATSINaM
12	Evolve Healthcare
13	PEPA – Program of Experience in the Palliative Approach
14	Rural Locum Assistance Program
15	Remote Area Health Corps (RAHC)
16	NT Nursing and Midwifery
17	Royal Flying Doctor Service
18	Defence Force Recruiting
19	Flinders Rural and Remote Health
21	Meta OT (TCHHS)
22	Barossa Hills Fleurieu Local Health Network
POD A	Cornerstone Medical Recruitment

EXHIBITOR FLOOR PLAN



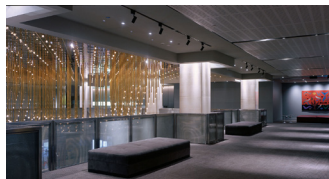
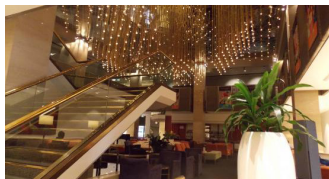
Exhibitors Passport

Have you downloaded the Conference App? If not, we suggest you do so. Download details can be found on the back page of this program.

Using the app visit all 21 booths and scan their unique QR code to go in the draw to win a prize!

Winners will be announced during the Conference close on Thursday afternoon.

SOCIAL FUNCTIONS



Welcome Reception

Welcome to the 2022 CRANaplus Conference! The Welcome Reception is your first social opportunity to catch up with your interstate colleagues and sponsors and exhibitors of the Conference. The Welcome also provides a great opportunity to meet delegates who are attending the Conference for the first time.

Join us as we announce the Gayle Woodford Memorial Scholarship recipient, inaugurate new CRANaplus Fellows, and for the presentation of graduates from any award course by Flinders University.

Date:	Tuesday 4 October
Time:	1800 – 2000
Venue:	Mezzanine Level, Hilton Hotel
Dress Code:	Smart Casual

2022 CRANaplus Conference Gala Dinner

Join us at the 39th CRANaplus Conference Gala Dinner. The dinner is your chance to celebrate and catch-up with colleagues and friends, new and old.

The theme for the 2022 Gala Dinner is **"ALL THAT SPARKLES"**. We invite you to dress up or wear something that sparkles. With our focus on sustainability, we challenge you to not buy anything new. Rummage through your wardrobe or borrow from a friend and embrace the theme with your sparkling accessories!

Date:	Thursday 6 October
Time:	1800 – 2300
Venue:	Ballroom, Hilton Hotel
Dress Code:	All that Sparkles

PROGRAM

Tuesday 4 October

15:00 – 20:00 REGISTRATION OPEN

18:00 – 20:00 Welcome Function | Mezzanine Level, Hilton Hotel

Wednesday 5 October

07:30 – 16:30 REGISTRATION OPEN | TRADE EXHIBITION

08:30 – 09:15 Conference Opening

Welcome to Country

Senior Kaurna Man, Mickey Kumatpi O'Brien

Welcome to Delegates

09:15 – 10:25 Keynote Speaker

Dr Norman Swan

Award-winning broadcaster, journalist and commentator



Award-winning broadcaster, journalist and commentator Dr. Norman Swan is one of Australia's best known health personalities. He hosts the Health Report and the Coronacast Podcast, reports for Four Corners, presents on ABC TV's the Drum and ABC NewsRadio, co-founded Tonic Health Media, edits The Choice Health Reader, and corresponds for multiple international medical journals. Trained in Medicine and Paediatrics, Dr. Swan will be discussing social determinants of health, lessons learned from the pandemic, and the future of remote health.

10:25 – 10:50 Morning Tea

PROGRAM

10:50 – 11:30

Invited Speaker

Adjunct Professor Shelley Nowlan

*Deputy National Rural Health
Commissioner & Chief Nursing and
Midwifery Officer, Queensland Health*



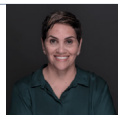
Adj. Prof. Shelley Nowlan, has over 35 years of experience as an RN. Widely recognised for her leadership and contributions to nursing, her professional and industry advice on nursing and midwifery matters across Queensland and rural Australia helps to drive improved access to rural health services and a sustainable workforce that can meet demand. She will be delivering the opening address.

11:30 – 12:05

Invited Speaker

Professor Roianne West

CEO of CATSINaM



Kalkadoon and Djaku-nde woman, Roianne West, CEO of CATSINaM, has led a life of extraordinary commitment to Indigenous Health. An RN who has also completed a Masters of Mental Health Nursing and a PhD developing a model of excellence for increasing Indigenous Nurses in Australia, Roianne was Australia's first Nursing Director at a tertiary hospital with a dedicated portfolio of Indigenous health, Australia's first Professor of Indigenous Health, and inaugural Dean of First Peoples Health at Griffith University.

12:05 – 12:15

Q&A | Morning Wrap Up

12:15 – 13:00

Lunch

13:00 – 13:05

Introduction to Abstract Presenters

13:05 – 13:20

Katie Pennington

Edith Cowan University

What we know and what we don't. Findings from the Registered Nurses in very remote Australia, medicines and the law project– So what? And what next?

PROGRAM

13:20 – 13:35

Sonita Giudice

Queensland Health

Co-design of maternity services to improve care and outcomes for Aboriginal and Torres Strait Islander women and babies – Queensland's Growing Deadly Families Strategy

13:35 – 13:50

Kylie McCullough

Edith Cowan University

Telling the World what RANs already know using research to influence change

13:50 – 14:05

Q&A

14:05 – 14:50

Invited Speaker

Dr Simon Quilty

Medical Advisor, Purple House



Simon is a general physician who has worked in remote NT since 2001, commenced specialist services in Katherine Hospital in 2012, and has been working in Alice Springs Hospital since 2020 as senior staff specialist. With a background in engineering and public health before commencing his medical career, he has unique perspectives on determinants of poor health outcomes in the communities he has worked in across northern Australia. He works with communities to conduct action research that identifies solutions to areas of inequity and broader threats, and his work is now focused entirely on understanding and mitigating the impact of heat and climate change in the tropical north of Australia.

14:50 – 15:00

Q&A | Afternoon Wrap Up

15:00 – 15:25

Afternoon Tea

15:25 – 16:30

Workshop – Nurse Practitioner 10 Year Plan

Allison Thomas & Lucy Firth

Department of Health and Aged Care

PROGRAM

16:30 – 18:30 **Flinders University Consultation (optional) | Ballroom, BC**

The College of Medicine and Public Health at Flinders University is reviewing its Remote Health Practice Courses, which have provided education and training for remote health professionals for over 20 years. The College is hoping that CRANaplus members attending the conference will participate as valued members of the stakeholder group. The outcomes of this review will help the College determine how its educational program serves industry needs.

Thursday 6 October

08:00 – 16:30 **REGISTRATION OPEN | TRADE EXHIBITION**

08:30 – 08:50 **Welcome to Day 2**

Address from the Hon Emma McBride MP

Assistant Minister for Mental Health and Suicide Prevention/ Assistant Minister for Rural and Regional Health

08:50 – 09:20 **Hotspot Presentation Roundtable**

Sandra Gilbert, *Rural Support Service*

Below the surface: Exploration of factors that impact on effectiveness of the South Australian Regional Enrolled Nursing Cadet Program

Anne Garrahy, *Queensland Health*

Improving access to end of life care planning support in rural and remote Queensland

Kim Packham, *Australian Commission on Safety and Quality in Health Care*

Improving health care in primary and community settings through new nationally-consistent, patient-centred safety and quality standards.

Jodie Turvey, *Queensland Health*

Establishing a state-wide rural and remote generalist nurse career pathway for registered nurses

PROGRAM

Dalya Holowinksi, *Murrumbidgee Local Health District*
Creating access and effective education in our current staffing crisis

09:20 – 10:20 **Invited Speaker**

Professor Sue Kildea

CRANaplus Fellow and Professor of Midwifery and Co-Director of the Molly Wardaguga Research Centre, CDU



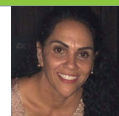
Prof. Sue Kildea is an internationally recognised midwifery leader, known for her advocacy for rural and remote health and for bringing birthing services to Aboriginal and Torres Strait control. A RN/RM with clinical, management, policy, education and research experience, Prof. Kildea has been using research in the maternity field to drive social change since the mid-90s. She will be discussing birthing on country/midwifery services in remote Australia.

10:20 – 10:45 **Morning Tea & Poster Session**

10:45 – 11:20 **Invited Speaker**

Leeona West

Registered Nurse, North West Hospital and Health Service



Leeona is a proud Kalkadoon and Djunke woman and along with her twin sister and her brother she graduated from Deakin University in 2001 with a Bachelor of Nursing degree. Leeona has experience working in rural and remote hospitals, aged care facilities, primary health care centres and Aboriginal community controlled health services. Leeona has worked across Cape York and the north-west including the Gulf of Carpentaria where she was the DON of Gununa Hospital (Morrington Island). Balancing her cultural responsibilities with her clinical skills, systems approach and good governance practice has enhanced her ability as a community leader.

PROGRAM

11:20 – 11:30	Introduction of Abstract Presenters
11:30 – 11:45	Jessica Gysin-Webster <i>OutsideIn Group</i> Kangaroo Island Health Service Phoenix Project – An innovative multi-disciplinary approach to fostering the wellbeing of a rural and remote health care service
11:45 – 12:00	Kellie Kerin <i>AMSANT</i> Be Influenced or be the Influencer – (Indigenous Transgenerational Trauma as a Lived Experience)
12:00 – 12:15	Geoffrey Angeles <i>One Disease</i> Having a positive impact on that itch
12:15 – 12:30	Q&A
12:30 – 13:15	Lunch
13:15 – 13:50	Invited Speaker Dr Rosemary Wyber & Vicki Wade <i>Dr Rosemary Wyber, Head of Strategy for END RHD, Senior Adjunct Research Fellow at the University of WA, and PhD Student with the Office of the Chief Scientist at The George Institute for Global Health.</i> <i>Vicki Wade, Close the Gap steering committee.</i> <p>Dr. Wyber's PhD focus is on developing an 'endgame' for rheumatic heart disease in Australia. Dr. Wyber completed her medical degree in New Zealand, her Masters of Public Health at the Harvard School of Public Health, and her General Practice training in Aboriginal Community Controlled Clinics in the NT.</p> <p>Vicki Wade is a Noongar woman from the Goreng, Minang, Bibelmen and Wadjari tribes in the south west of Western Australia.</p>



PROGRAM

13:50 – 13:55	Introduction of Abstract Presenters
13:55 – 14:10	Jessie Anderson <i>Flinders University</i> Fostering the remote health workforce: How undergraduate placements and work intention impacts the choice of remote practice in early career nursing and allied health professionals
14:10 – 14:25	Kristy Hill <i>CRANApus</i> Delivering support in a changing landscape
14:25 – 14:30	Q&A
15:00 – 15:25	Afternoon Tea
14:55 – 15:45	Panel Presentation – Remote Area Nursing Into the Future Chair: Katherine Isbister, CEO CRANApus Sabina Knight, Roianne West, Tess Ivanhoe and Fiona Wake
15:45 – 16:00	Conference Close
18:00 – 23:00	CRANApus Conference Gala Dinner Ballroom, Hilton Hotel <i>Bookings essential. Check with the registration desk if you are unsure of your attendance.</i> <p>The theme for the 2022 Gala Dinner is "ALL THAT SPARKLES". We invite you to dress up or wear something that sparkles. With our focus on sustainability, we challenge you to not buy anything new. Rummage through your wardrobe or borrow from a friend and embrace the theme with your sparkling accessories!</p>

ALL THAT Sparkles

INVITED SPEAKERS



Dr. Norman Swan
KEYNOTE SPEAKER



Adjunct Professor Shelley Nowlan



Professor Sue Kildea



Dr. Rosemary Wyber



Sabina Knight



Tess Ivanhoe



Katherine Isbister



Senior Kaurna Man, Mickey Kumatpi O'Brien

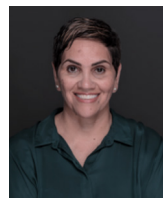
INVITED SPEAKERS



Hon Emma McBride MP



Dr. Simon Quilty



Professor Roianne West



Leeona West



Vicki Tooditj Wade



Fiona Wake



Network: CRANaplus Conference
Password: : 2022CRANA

MEMBER BENEFITS



10
11
12

Give you access to the latest evidence-based resources, guidelines, webinars, podcasts and lots more



CONTACT



AusCAPPS_

OUR PROJECT PARTNERS



CRANApplus DELEGATE APP

We encourage you to download our mobile guide to enhance your experience at the CRANApplus 2022 Conference. You'll be able to plan your day with a personalised schedule, take notes, connect with other delegates and browse exhibitors, maps and general conference information.



iPhone or iPad

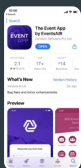


Android



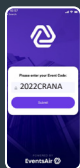
Web

The app is compatible with iPhones, iPads, iPod Touches and Android devices.



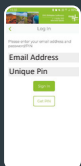
1. Download

Download "The Event App by EventsAIR" from Google Play or the Apple App Store.



2. Open the App

Open the App and enter the following Event Code when prompted: **2022CRANA**



3. Log in

Click the log in button and enter your unique log in details (sent to you via email).



4. Explore!

Start exploring the program, upload your photo, scan QR codes to win prizes and more!

cranaconference.com