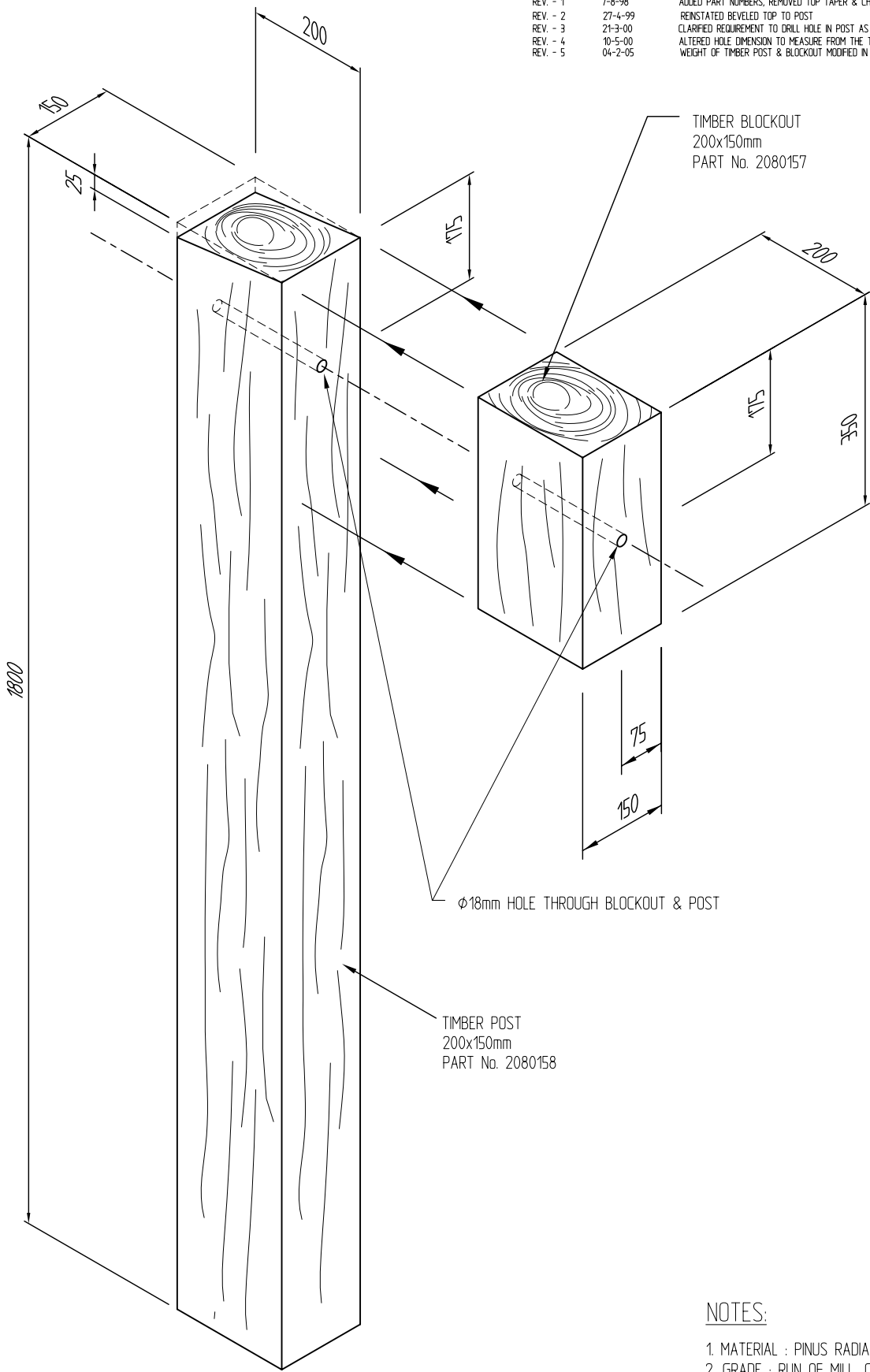


Revision	Rev. Date	Changes Made
REV. - 1	7-8-98	ADDED PART NUMBERS, REMOVED TOP TAPER & CHANGED TITLE BLOCK
REV. - 2	27-4-99	REINSTATED BEVELED TOP TO POST
REV. - 3	21-3-00	CLARIFIED REQUIREMENT TO DRILL HOLE IN POST AS WELL AS BLOCKOUT.
REV. - 4	10-5-00	ALTERED HOLE DIMENSION TO MEASURE FROM THE TOP OF THE POSTS DOWN.
REV. - 5	04-2-05	WEIGHT OF TIMBER POST & BLOCKOUT MODIFIED IN NOTES



- NOTES:**
1. MATERIAL : PINUS RADIATA
 2. GRADE : RUN OF MILL, CUT TO LENGTH.
 3. DRILL $\phi 18$ HOLES IN POST & BLOCK OUT PRIOR TO TREATMENT.
 4. TREATED TO HAZARD LEVEL H4 IN ACCORDANCE WITH AS 1604.
 5. WEIGHT : 38 kg FOR TIMBER POST
4 Kg FOR TIMBER BLOCKOUT

USED FOR HIGHWAY AND BRIDGE RAIL 10-12 GAUGE
ALSO SEE FX283, FX360, FX390, FX393.



306 Neilson Street,
Onehunga, Auckland
PO Box 12 949, Penrose
Auckland, New Zealand
Telephone 09-634 1239
Facsimile 09-634 4525
www.csppacific.co.nz

Copyright: This design, information and drawing remain the property of CSP Pacific and may not be used or copied without approval in writing from CSP Pacific.

STANDARD FLEXRAIL TIMBER BLOCKOUT
- PART No. 2080157

STANDARD FLEXRAIL TIMBER POST
- PART No. 2080158

Drawn by	MJH	Date	22-7-98
Checked		Scale A4	1 : 10
Reference No.			
Drawing no.	FX107	Rev. No.	5