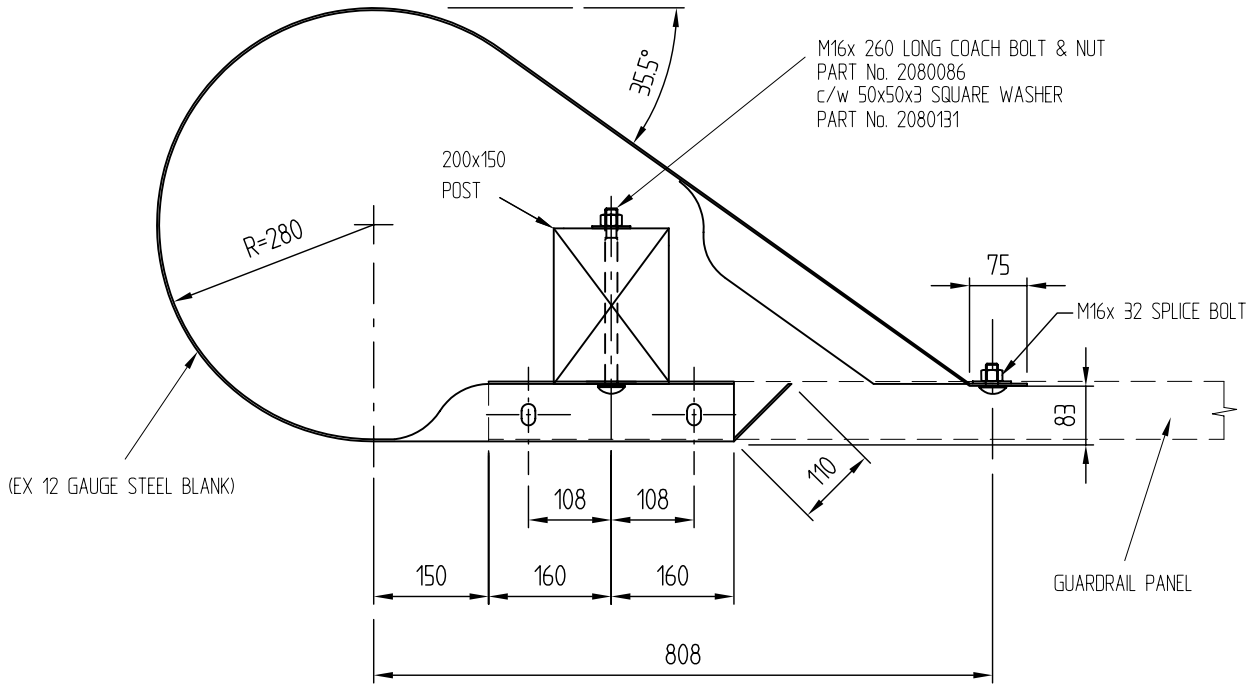
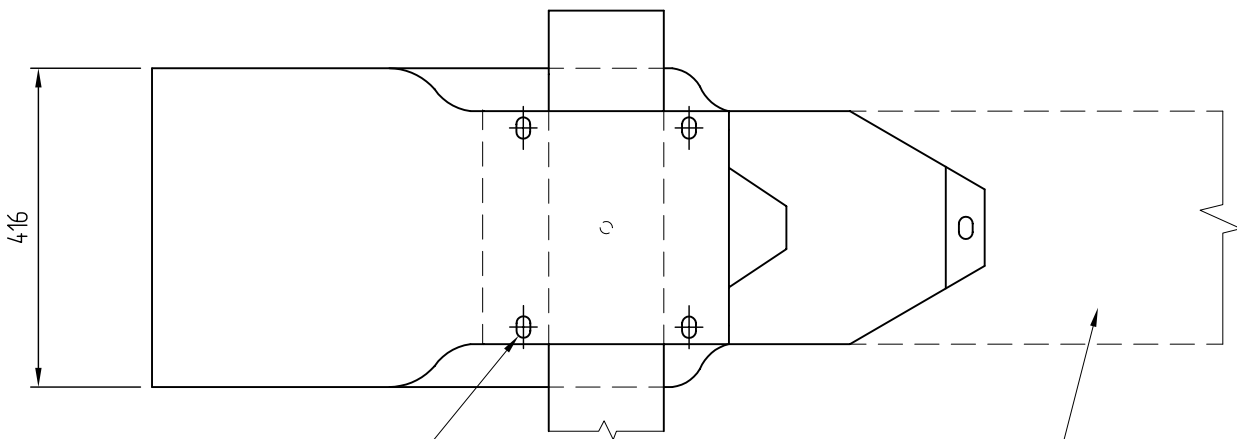


Revision	Rev. Date	Changes Made
REV 1	MJH 08-04-97	DRAWING TITLE CHANGED TO INCLUDE CORRECT DESCRIPTIONS & CSP PART NUMBER & GALV WEIGHT ADDED TO NOTES
REV 2	SB 30-07-04	DRAWING TITLE CHANGED
REV 3	SB 02-09-04	REFERENCED DWG NOS. ADDED



PLAN



4x 29x 18 SLOTTED HOLES TO TAKE  
M16x 32 LONG SPLICE BOLTS

ELEVATION

NOTES:

1. HOT DIP GALVANIZED FINISH
2. GALV. WEIGHT : 20.3kg
3. REPRODUCED FROM CALIFORNIAN STANDARD PLAN FOR B.C.T. SOA77-E.5
4. FOR FABRICATION DETAILS REFER TO FX153

ALSO SEE FX153, FX335, FX348-2, FX348-4, FX360.



306 Neilson Street,  
Onehunga, Auckland  
PO Box 12 949, Penrose  
Auckland, New Zealand  
Telephone 09-634 1239  
Facsimile 09-634 4525  
www.csppacific.co.nz

BULLNOSE TERMINAL END  
SINGLE PIECE BULLNOSE  
PART No. 2080042

Drawn by	MJH	Date	16-01-96
Checked		Scale	A4 1:10
Reference No.			
Drawing no.	FX146	Rev. No.	3