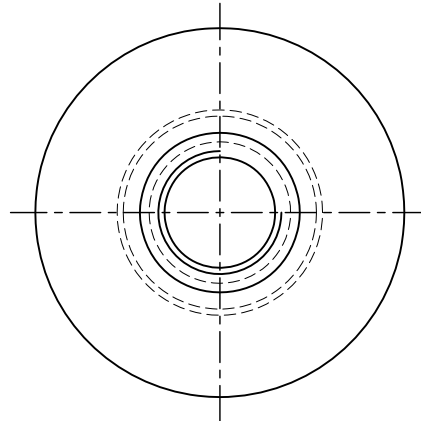
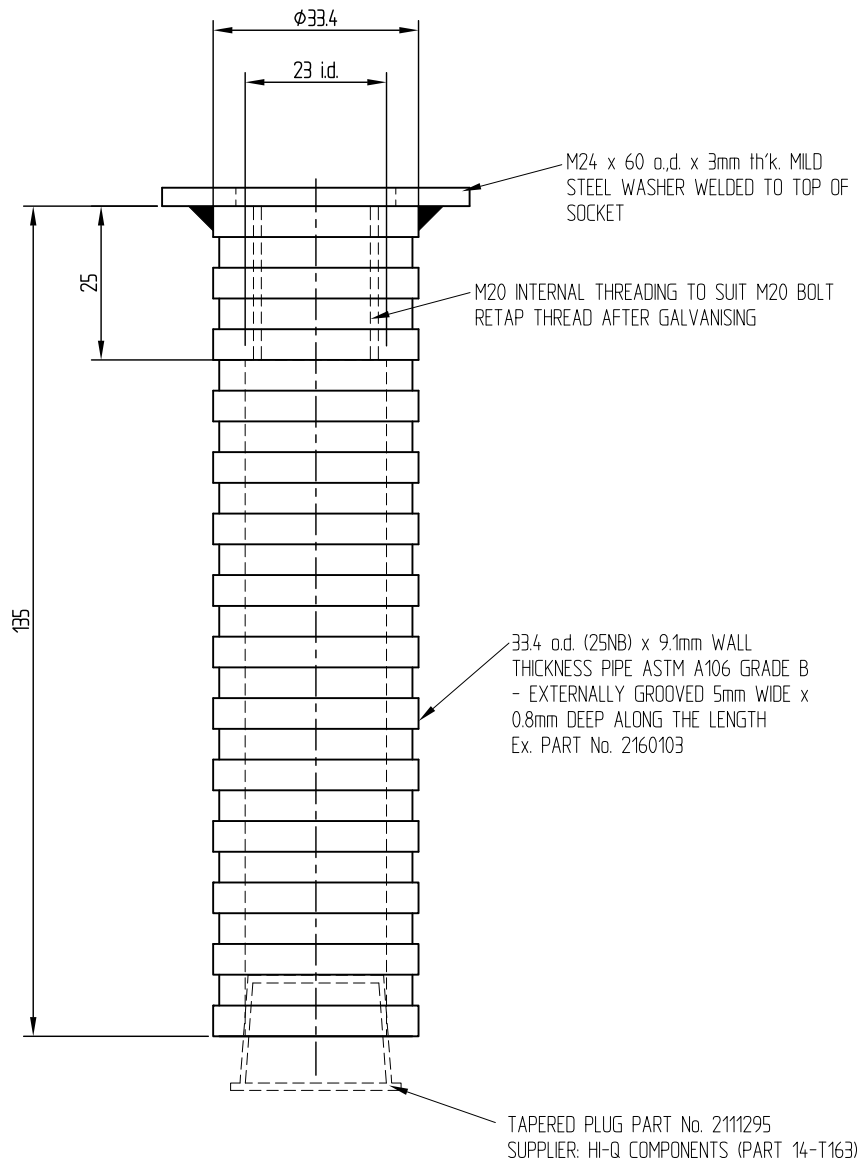


Revision	Rev. Date	Changes Made
1(LA)	29-08-12	Changed Pipe thickness & removed Disclaimer.
2(LA)	28-09-12	Modified external groove.
3(LA)	12-10-12	Modified external groove, length and added washer to socket.



PLAN



ELEVATION

NOTES :

1. SOCKET GALVANIZED TO AS/NZS4680:2006.
2. GALVANIZED TO FINISH, GALV. WEIGHT : 1.1 Kg



306 Neilson Street,
 Onehunga, Auckland
 PO Box 12 949, Penrose
 Auckland, New Zealand
 Telephone 09-634 1239
 Facsimile 09-634 4525
 www.csppacific.co.nz

M20 CAST-IN SOCKET EXTERNALLY THREADED
 TO SUIT STEEL BRIDGE POSTS

Copyright: This design, information and drawing remain the property of CSP Pacific and may not be used or copied without approval in writing from CSP Pacific.

Drawn by	LA	Date	27-08-12
Checked		Scale A4	1 : 1.25
Reference No.			
Drawing no.	FX150-5	Rev. No.	3