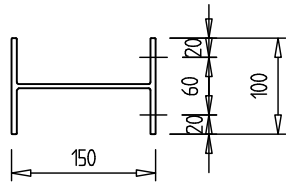
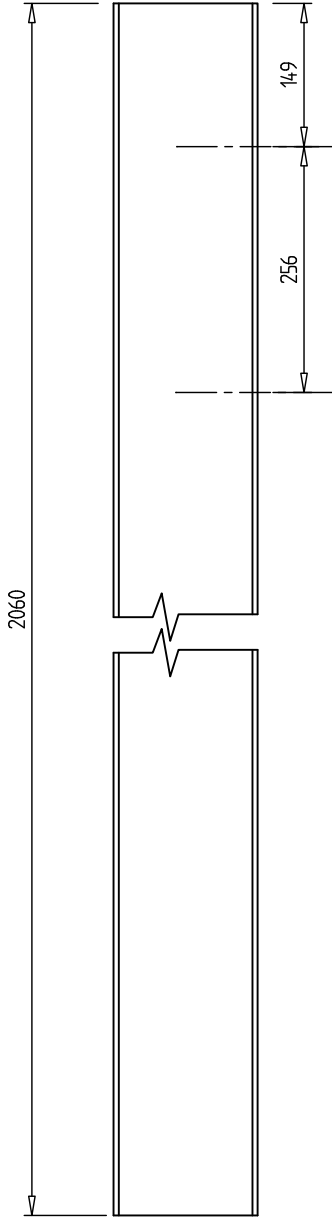


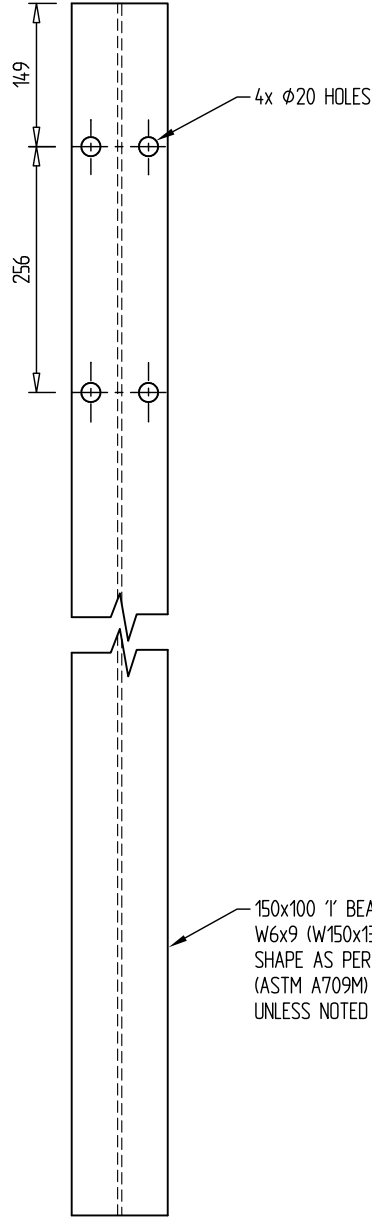
Revision	Rev. Date	Changes Made
Rev. 1	19/07/05	Length of Driven Post changed from 2100 to 2060 1" Post Cross Section dimensions modified to 150x102
Rev. 2	16/10/06	Driven post weight corrected
Rev. 3 (SB)	07/03/12	1" beam specs added for post, blackout removed
Rev. 4 (LA)	07/03/18	Added hole dimension distances.



PLAN



ELEVATION



SIDE VIEW

150x100 1" BEAM  
W6x9 (W150x13.5) STRUCTURAL  
SHAPE AS PER AASHTO M270M  
(ASTM A709M) GRADE 250 STEEL  
UNLESS NOTED OTHERWISE

DRIVEN POST

Part No. 2080388  
BLACK WT. = 24.8 Kg  
GALV WT. = 26.0 Kg

NOTES :

- 1) AS PER FHWA REPORT HMHS-B64, THE DRIVEN "1" POST HAS BEEN TESTED TO NCHRP350 TL4.
- 2) FOR MODIFIED BLOCKOUT REFER TO DWG FX475

ALSO SEE FX475, FX476



306 Neilson Street,  
Onehunga, Auckland  
PO Box 12 949, Penrose  
Auckland, New Zealand  
Telephone 09-634 1239  
Facsimile 09-634 4525  
www.csppacific.co.nz

Copyright: This design, information and drawing remain the property of CSP Pacific and may not be used or copied without approval in writing from CSP Pacific.

THRIEBEAM  
DRIVEN POST  
"1" SECTION

Drawn by	SB	Date	22-01-04
Checked		Scale A4	1 : 8
Reference No.			
Drawing no.	FX459	Rev. No.	4