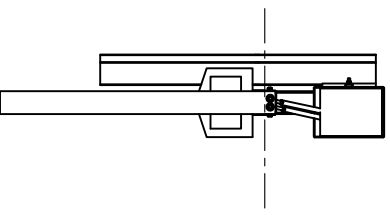
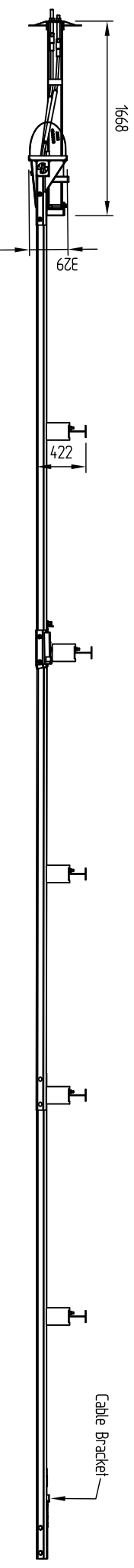
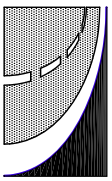


Revision	Rev. Date	Changes Made
Rev. 1 (SB)	09-08-10	v' notices removed from post 3 onwards
Rev. 2 (SB)	20-06-11	Variable in. to cr. of rail, post no. 2 crimped added
Rev. 3 (SK)	06-09-18	Maintenance note added



FOR MAINTENANCE ONLY
 REFER TO FX577 FOR NU-GUARD 31 TRANSITION TO 31" HIGH X-350
 REFER TO FX608 FOR NU-GUARD 31 TRANSITION TO 27" HIGH X-350

FRONT ELEVATION
 SEC. A-A



306 Neilson Street,
 Onehunga, Auckland
 PO Box 12 949, Pentrose
 Auckland, New Zealand
 Telephone 09-634 1239
 Facsimile 09-634 4525
 www.cspacific.co.nz

X-350 Fully Redirective Non-gating
 Tangential Terminal End on Steel Posts
 CSP Part No. 2500001
 (ex Armortlex part No. X-001S)
 (Refer to drawing no. FX541)

Drawn by	ELI	Date	04/08/08
Checked		Scale	A4
Reference No.			150
Drawing no.	FX540		Rev. No.
			3

Copyright. The design, information and drawing remain the property of CSP Pacific and may not be used or copied without the prior written consent of CSP Pacific.