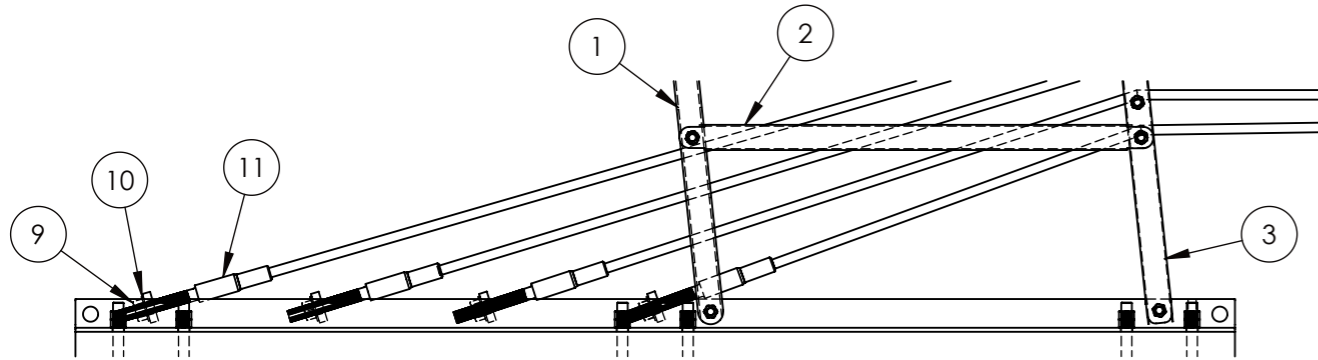
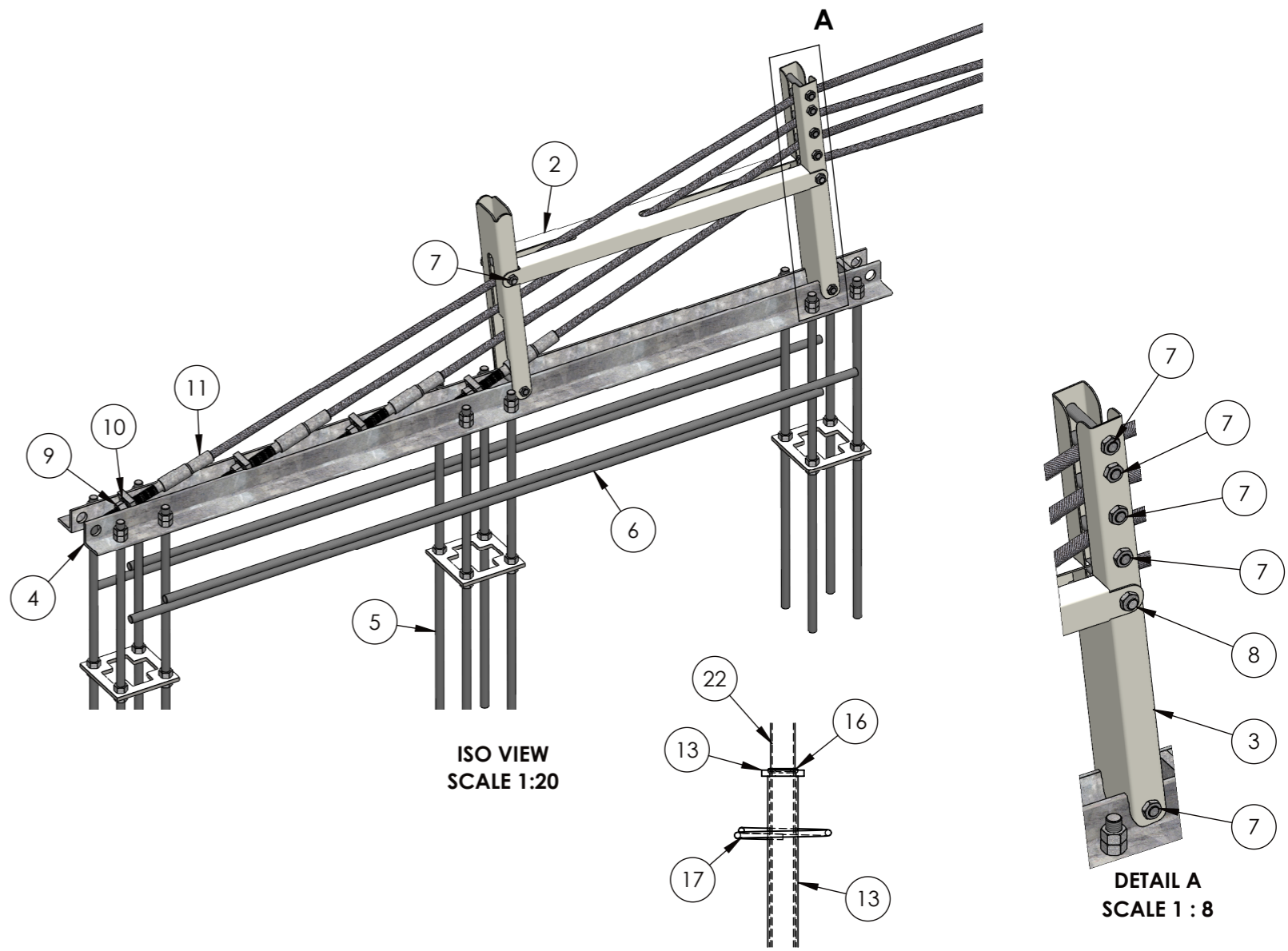
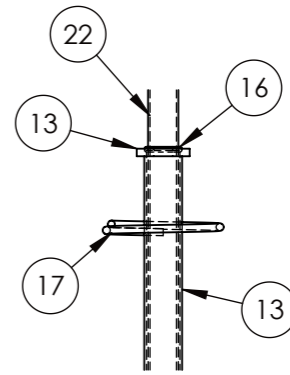


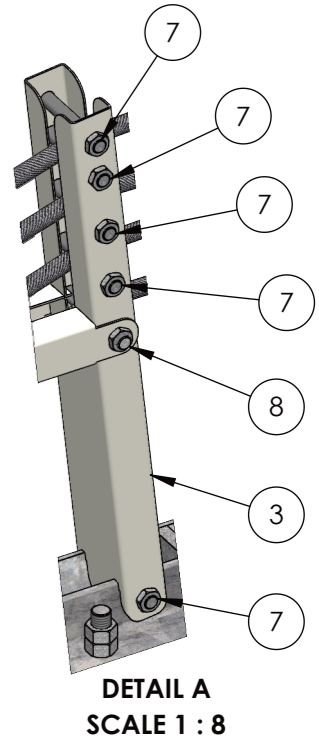
ITEM NO.	PART NO.	DESCRIPTION	QTY.	WEIGHT EA.	DWG NO.
1	2083133SLM	SL WIRE ROPE STE TRIGGER POST 570mm WHITE	1	3.46	FX750-4
2	2083076SLM	SL WIRE ROPE STE STRUT 107x50x2.5t 940mm WHITE	1	3.95	FX750-5
3	2083077SLM	SL WIRE ROPE STE DEFLECTION POST 660mm WHITE	1	2.68	FX750-3
4	2083032SLM	SL WIRE ROPE STE GROUND BASE FRAME 2300mm GALV	1	36.77	FX750, FX750-1
5	2083071SLM	SL WIRE ROPE STE HOLD DOWN ASSEMBLY 4M20x1000L 130CRS	3	13.25	FX751
6	2110230H	BNW FULLY THREADED ROD M20x2000L GALV	6	5	
7	2081130A	BNW ENG BOLT & 1/2NUT M16x110 GALV 8.8	6	0.21	
8	2081131	BNW ENG BOLT & 1/2NUT M16x120 GALV 8.8	2	0.23	
9	2110162	BNW ENG NUT M24 GALV 4.6	4	0.1	
10	2110839	BNW WASHER ROUND M24x50x3 GALV	4	0.03	
11	2083075	SL WIRE ROPE SELF SWAGE FITTING M24	4	1.54	
12	2200036	SL WIRE ROPE 19mm DIA	AS REQUIRED		
13	2083070SLM	SL WIRE ROPE POST SOCKET	8	0.37	FX747-4
14	2083078SLM	SL WIRE ROPE STE TRANSITION POST 1 1086mm WHITE	1	6	FX749-1
15	2110162SLM	SL WIRE ROPE HALF TIE 8mm ALUMINIUM	28	0.04	FX747-2
16	2083073SLM	SL WIRE ROPE LINEPOST O-RING 5mm	8	0.01	FX747-5
17	2083086	SL WIRE ROPE REBAR RING SMOOTH	8	0.34	
18	2083079SLM	SL WIRE ROPE STE TRANSITION POST 2 1112mm WHITE	1	6	FX749-2
19	2083080SLM	SL WIRE ROPE STE TRANSITION POST 3 1167mm WHITE	1	6	FX749-3
20	2080223SLM	SL WIRE ROPE STE TRANSITION POST 4 1220mm WHITE	1	6	FX749-4
21	2083130SLM	SL WIRE ROPE STE TRANSITION POST 5 1283mm WHITE	1	7	FX749-5
22	2083131SLM-A	SL WIRE ROPE LINEPOST 1370mm WHITE - 4 SLOTS	3	7	FX747A-1
23	2083072SLM	SL WIRE ROPE LINEPOST CAP	3	0.07	FX747-3



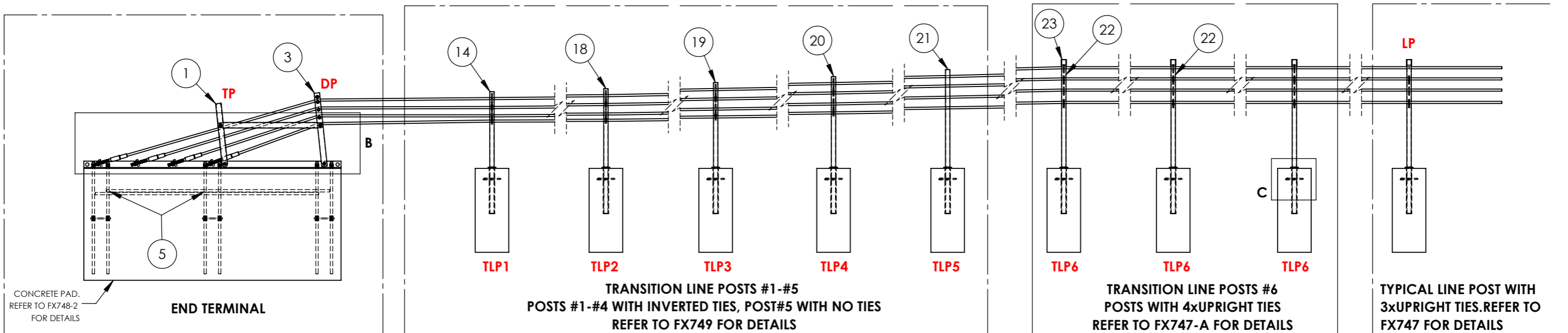
DETAIL B
SCALE 1 : 15



DETAIL C
SCALE 1 : 10



DETAIL A
SCALE 1 : 8



CONCRETE PAD.
REFER TO FX748-2
FOR DETAILS

END TERMINAL

TRANSITION LINE POSTS #1-#5
POSTS #1-#4 WITH INVERTED TIES, POST#5 WITH NO TIES
REFER TO FX749 FOR DETAILS

TRANSITION LINE POSTS #6
POSTS WITH 4xUPRIGHT TIES
REFER TO FX747-A FOR DETAILS

TYPICAL LINE POST WITH
3xUPRIGHT TIES.REFER TO
FX747 FOR DETAILS

NOTES:

REVISION REV.DATE CHANGES MADE



304 Neilson Street
Onehunga, Auckland
P O Box 12949, Penrose
Auckland, New Zealand
Telephone: 09 634 1239
Facsimile: 09 634 4525

SCALE A3 1:35
ASSEMBLY NO. 2083091SLM
WEIGHT(Kg)

DESCRIPTION
SL WIRE ROPE TERMINAL END UNIT
WHITE - CONCRETE BLOCK OPTION
BILL OF MATERIALS

DRAWN S KERAI
DRW NO. FX748-1
DATE 21/11/2019

DESTROY ALL
PREVIOUS
ISSUES
0
REVISION