



## ***Sentry Barrier & Sentry Median Barrier System***

The Sentry Barrier is a roadside W-Beam guardrail system suitable for containing, redirecting and shielding vehicles from roadside obstacles.

The Sentry Median Barrier is a W-Beam guardrail system suitable for containing, redirecting and shielding vehicles from opposing traffic or dual carriageways.

The system has been designed and tested to meet the evaluation criteria of MASH Test Level 3 (TL-3) for a longitudinal barrier.

## FEATURES

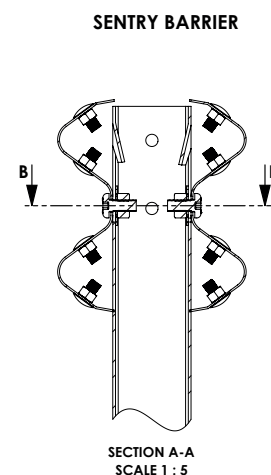
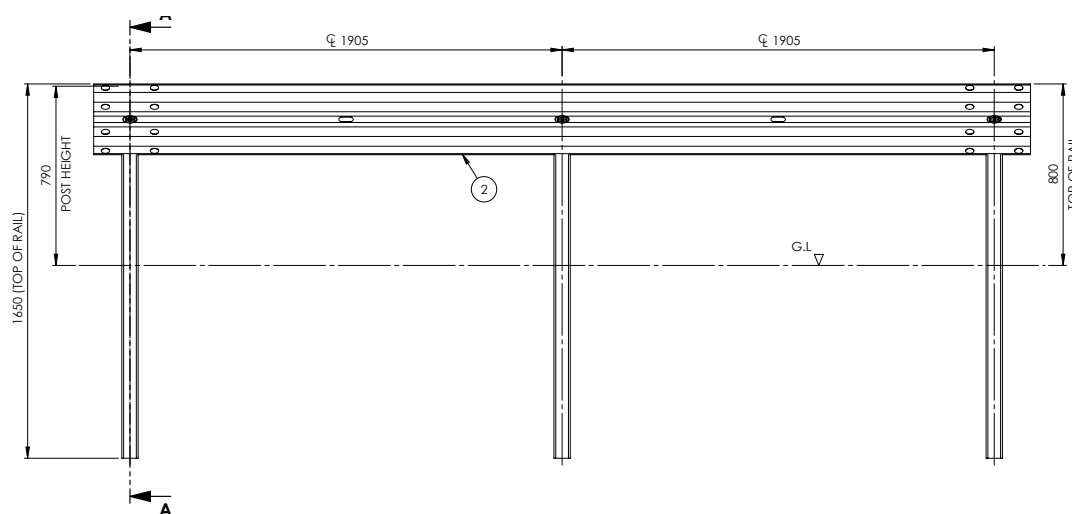
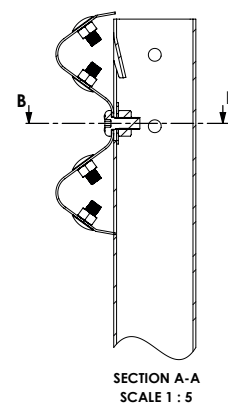
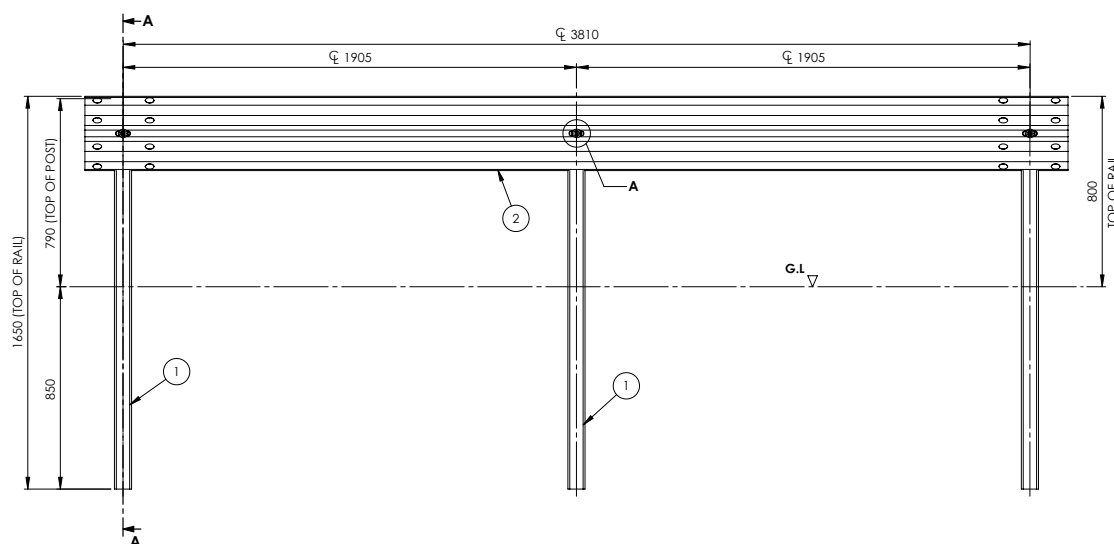
- Designed and made in New Zealand
- MASH TL-2 and TL-3 tested
- Semi-flexible roadside and median barrier
- No block out and stiffener required
- A narrower footprint than public systems
- Conventional 'C' shaped post with a shorter, smaller profile
- Minimal parts make repair easier
- Rail sits higher than post for increased safety and performance
- With a height of 800mm from the surface to the top of the rail, allows for future pavement overlays

## STANDARDS AND APPROVALS

- MASH Test Level 3 compliant as a permanent Longitudinal Barrier system
- AS3845: 2015 compliant
- Austroads Safety Barrier Assessment Panel (ASBAP) recommendation for acceptance

## SPECIFICATIONS

	Sentry	Sentry Median
System width	201mm	283mm
Height to top of rail	800mm	800mm
Height to top of post	790mm	790mm
Post weight	13.7kg	13.7kg
Post length	1.64m	1.64m
Post spacing	1.905m	1.905m
MASH TL-3 deflection (1100 kg @ 25 degrees)	1.02m	1.10m
MASH TL-3 deflection (2270 kg @25 degrees)	1.59m	1.59m
Minimum length of barrier between terminals	30m	30m
Maximum slope behind barrier when setback 0 mm to batter hinge point	3H:1V Slope	n/a
Maximum slope behind barrier when setback 200 mm to batter hinge point	3H:1V Slope	n/a



SENTRY MEDIAN BARRIER