



Thrie-Beam

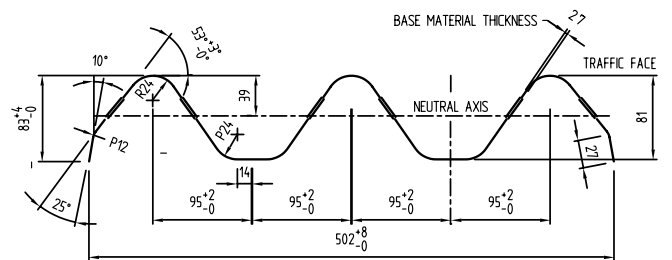
Thrie-Beam has been available for more than 25 years as a natural addition to the guardrail family of products. Thrie-Beam has an added corrugation that gives it an advantage for use in transitions to bridges and along high volume, high speed roadways.

Thrie-Beam derives its name from the general cross-sectional shape of the beam. The product is roll formed from coil steel and sheared to length. It is punched and slotted to suit the particular configuration, then hot dip galvanised prior to despatch.

Thrie-Beam complies with the requirements of AS/NZS 3845.1:2015 and TNZ M23.

Thrie-Beam is available ex-stock in standard net lengths of 4m with post spacing at 1m centres.

PROFILE



Roadside



Workplace



Roadwork



Pedestrian



Seeing



Environment

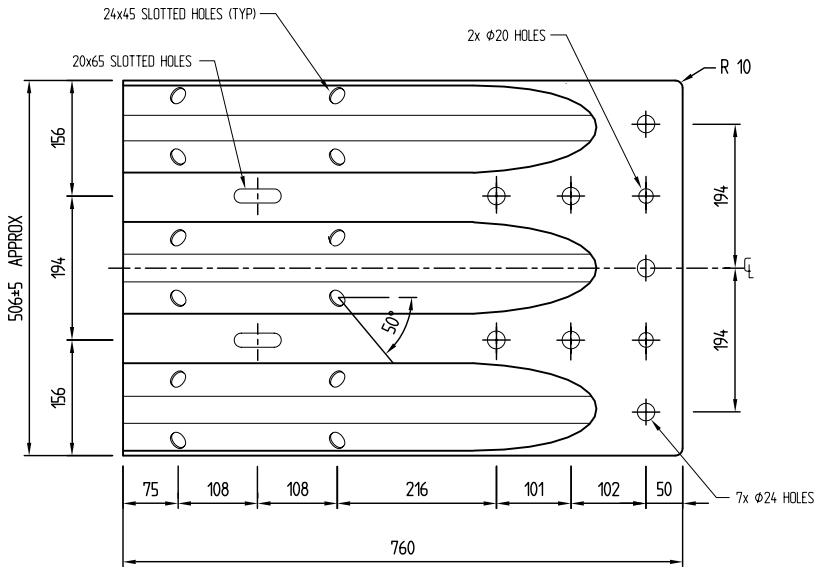


Telecoms

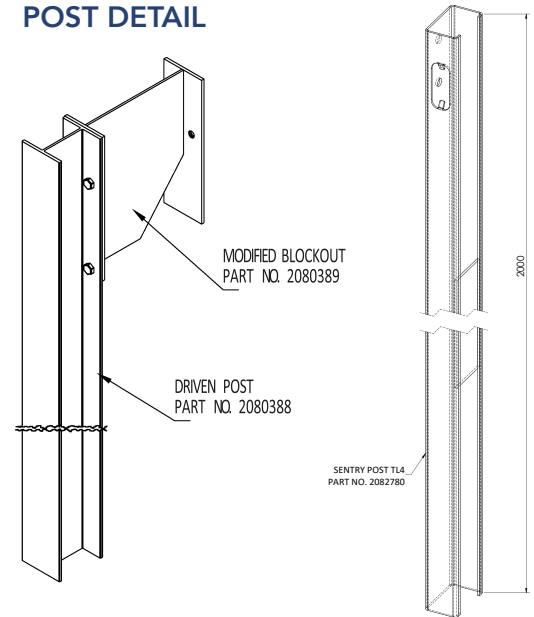
SPECIFICATIONS

	2.7 mm gauge
Beam width minimum	508 mm
Beam depth minimum	76 mm
Cross sectional area	2,013 mm ²
Moment of inertia	1,555,000 mm ²
Section modulus	36,400 mm ³
Weight (approx)	16.7 kg/m

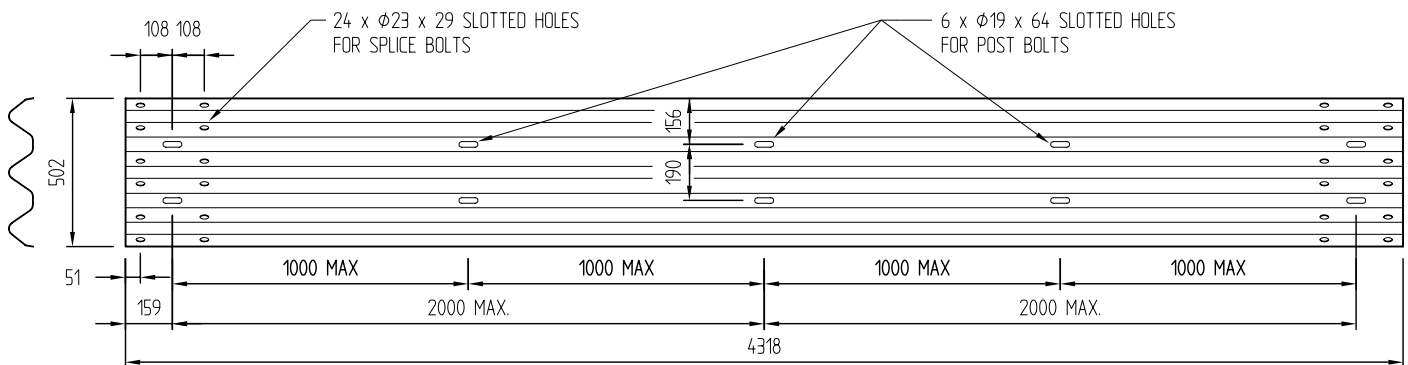
STRUCTURE CONNECTOR



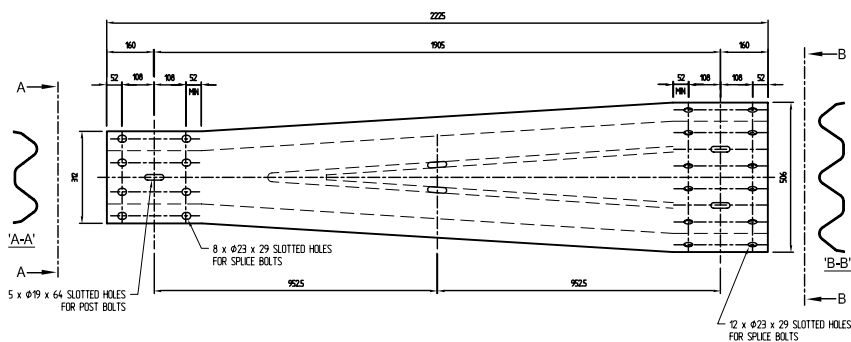
POST DETAIL



THREE-BEAM RAIL ELEVATION



TRANSITION SECTION



BACKING PLATE

