

YORK HINGE 2 COLUMN

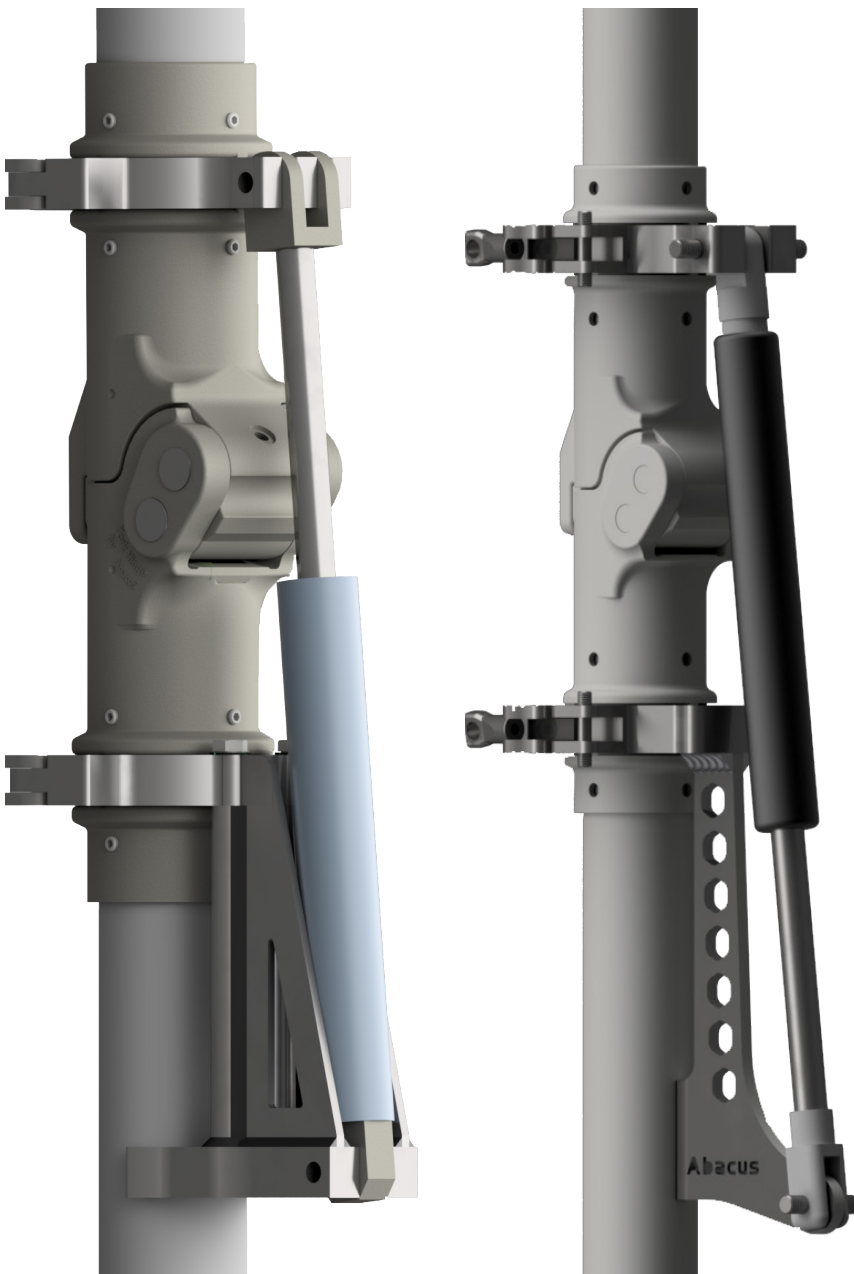
Abacus[®]

Leaders in Lighting

The York Hinge converts a fixed column into a raising and lowering column which complements our existing range of base-hinged columns. York Hinge columns are designed for use in areas that are inaccessible with bulky equipment or have no room available for our standard raise and lower column to be installed.

Benefits

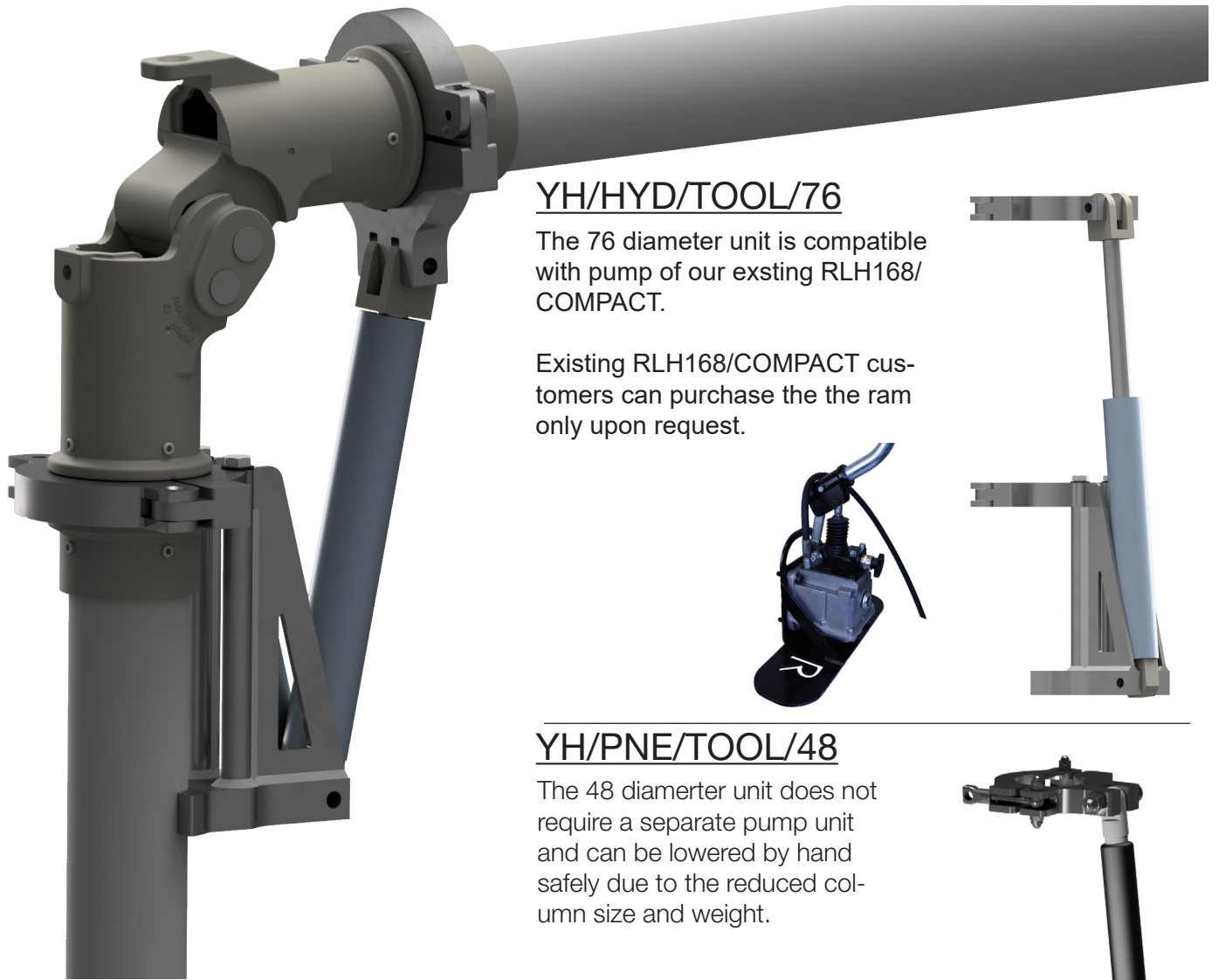
- Vandal resistant design requiring two specific security keys for access and operation
- A portable, one size fits all tool design allows for simple, single person operation
- Ongoing financial costs are kept low due to the maintenance free design of the hinge
- Ideal for use in inaccessible areas such as bridges or petrochemical platforms where the standard raise and lower column cannot be used



76mm diameter shafts 48mm diameter shafts

Features

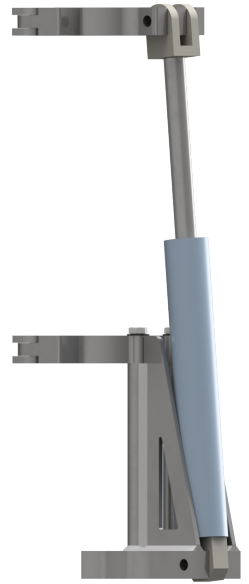
- Lowers the top section of the column in any set direction with no outwards swing of column sections
- For use on columns up to 6m
- Two versions available to fit 76mm and 48mm diameter shafts
- Headload up to 25kg at 6m using the larger unit and 15kg at 3m with the smaller unit
- Vandal resistant security bolt locks the hinge in place
- Two specially designed pins require security keys for unlocking and operation of the York Hinge
- Increased cabling capacity over previous designs due to external lowering device.
- Cast steel construction
- Finishing options include galvanising, painting or powder coating
- Maintenance free design
- One man operation
- The York Hinge itself is as strong as the column. Wind loading capacity is not compromised
- The York Hinge can be retrofitted to existing fixed columns, contact our team for further information



YH/HYD/TOOL/76

The 76 diameter unit is compatible with pump of our existing RLH168/COMPACT.

Existing RLH168/COMPACT customers can purchase the the ram only upon request.



YH/PNE/TOOL/48

The 48 diameterter unit does not require a separate pump unit and can be lowered by hand safely due to the reduced column size and weight.



Pre-assembled Columns

Base dia (mm)	Shaft dia (mm)	Height (mm)	Root Mounted Product Code	Flange Mounted Product Code
140	76	3000	TB030/YH2	TB030/FP/YH2
		4000	TB040/YH2	TB040/FP/YH2
		5000	TB050/YH2	TB050/FP/YH2
		6000	TB060/YH2	TB060/FP/YH2
168	76	3000	TB031/YH2	TB031/FP/YH2
		4000	TB041/YH2	TB041/FP/YH2
		5000	TB051/YH2	TB051/FP/YH2
		6000	TB061/YH2	TB061/FP/YH2

Operating Tools

Product Code	
YH/HYD/TOOL/76	Complete with both the hydraulic lowering ram and pump unit. Lowering ram available separately on request for existing RLH168/COMPACT users.
YH/PNE/TOOL/48	Single pneumatically controlled lowering ram with no need for any additional pump unit.