

Newsletter

October 2020



Light rail leaps ahead

It's all systems go to build the Parramatta Light Rail

Major work on the Parramatta Light Rail continues to ramp up despite COVID-19 restrictions, with new work zones opening up across the alignment, while more than 300 utilities have been identified and relocated in the Parramatta CBD (see inset story, right).

Parramatta Connect, the construction team engaged to carry out the Parramatta Light Rail infrastructure works on behalf of Transport for NSW, has been working in North Parramatta to identify utilities and improve drainage systems. Meanwhile, following archaeological excavations in the Parramatta CBD, the construction team has moved to George Street near Queens Wharf Reserve to excavate, trench and install drainage, pipes, conduits and pits – laying the essential groundwork for the new light rail network to come.

In Telopea and Rydalmere, the project team continues to install underground services including stormwater drainage, with temporary changes to pedestrian access while this important section of work is carried out.

The Parramatta Light Rail project encompasses more than a new light rail network. As part of the program, work is underway to construct a five-kilometre walking and cycling path; to create two shared light rail and pedestrian zones along Church and Macquarie Streets in the Parramatta CBD; and to plant more than 3500 trees in some of Parramatta's hottest streets. These measures will ensure the light rail program leaves a legacy of great urban design, liveable communities and green space, as well as accessible and convenient public transport. The light rail is expected to open in 2023.



After several years of site investigations and hard work, more than 300 utilities have been identified and relocated in the Parramatta CBD.

The Parramatta Light Rail is being built around pre-existing utilities such as power lines, stormwater drains, underground gas and water pipes, sewerage systems, and critical telecommunications lines. Following the closure of Parramatta CBD's 'Eat Street' to cars earlier this year, the construction team used augmented reality and digital 3D technology to untangle a maze of high-voltage power cables, water mains, gas crossings, 500 metres of stormwater pipes and thousands of metres of conduit.

Transport for NSW consulted the major utility providers from the very early stages to plan design and construction activities, in an endeavour to identify almost all known services. These works now pave the way for the installation of street lights, tree pits and drainage on Eat Street.

Find out more at

parramattalightrail.nsw.gov.au

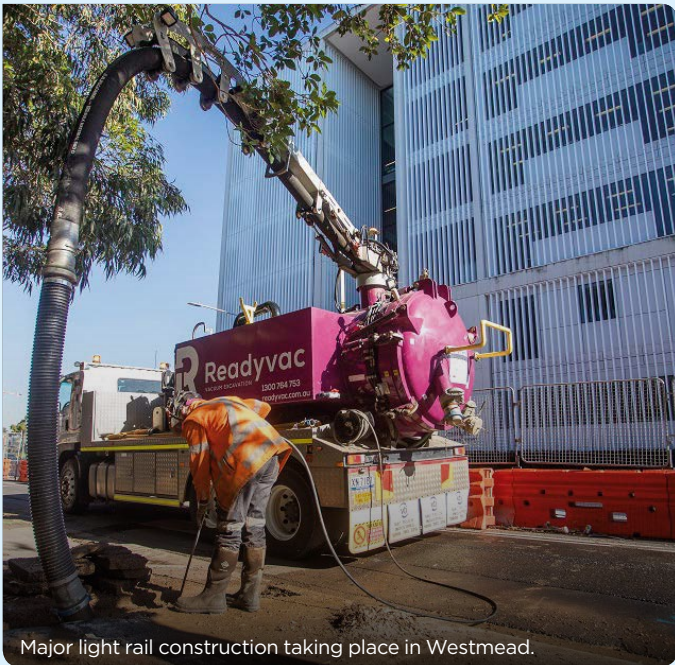


Westmead works

In preparation for the influx of people working and visiting one of the largest medical, education and research hubs of the southern hemisphere, major light rail construction has started outside the Westmead Health Precinct. The Parramatta Light Rail will link Westmead customers to rail, bus, and the future Sydney Metro West.

The precinct will cater to more than 40,000 full-time staff and 30,000 students by 2036. Hawkesbury Road in Westmead was widened earlier this year in preparation for the light rail works, while upcoming work includes removing the road surface, replacing underground utilities and rebuilding the road.

Transport for NSW will continue to talk with residents, local businesses and the community to inform and update them about access and traffic changes as these occur. You can view community notifications at parramattalightrail.nsw.gov.au/library.



Major light rail construction taking place in Westmead.

Bridging the gap



Above: Kissing Point Road Bridge in Dundas is being modified to accommodate an active transport link (cycling and walking path), while a brand-new bridge alongside it will support the dual-track light rail – one of six new bridges to be delivered and five bridges extended across Westmead, Parramatta, Camellia, Rosehill and Dundas as part of the light rail project.

Shop local to win

They're the smiling faces down the road, up the street and around the corner from your place who know you by name. This October, the Parramatta Light Rail project is celebrating NSW Small Business Month with a range of special offers to entice you to 'shop local' along the light rail alignment, intended to support our small businesses as they navigate the challenges of major construction and the COVID-19 pandemic. Download the app 'Activate Parramatta' and scan the in-store QR code every time you make a purchase to automatically go into the major prize draw. Check out the Parramatta Light Rail Facebook page for special offers throughout October at facebook.com/parramattalightrail. Read more about our business support initiatives at parramattalightrail.nsw.gov.au/businesses.



Hello, little one! At least 3500 trees are being planted over the next four years as part of the Parramatta Light Rail program of works, bringing shade to some of the hottest streets in Parramatta. This includes around 76 fig tree cuttings to be planted in and around the light rail.



Springfield Pharmacy.

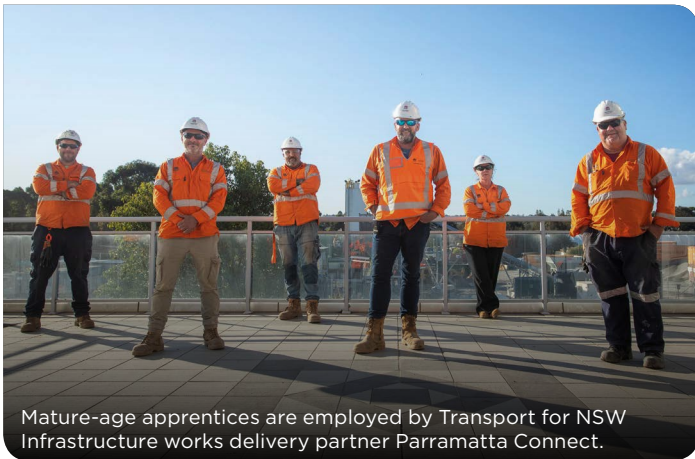
New breed of apprentices

A new breed of apprentices has joined the Parramatta Light Rail project, supporting the NSW Government's commitment to boost the economy and create new jobs following the recent Covid-19 pandemic.

The mature-aged apprentices, ranging in their 30s to 50s, are undertaking Civil Construction apprenticeships while building the Parramatta Light Rail, part of the project's commitment to creating opportunities for mature-aged workers to upskill and gain formal qualifications.

More opportunities are on their way through the project's major contractors and sub-contractors.

Keep an eye on upcoming employment opportunities at parramattalightrail.nsw.gov.au/get-involved.



Mature-age apprentices are employed by Transport for NSW Infrastructure works delivery partner Parramatta Connect.

Tunnelling to the future

Last month, 'Elizabeth', the micro-tunnelling machine used as part of the Parramatta Light Rail project, completed her journey. Launched from Centenary Square in June to build drainage and stormwater capacity, Elizabeth travelled over 500 metres underneath Parramatta CBD's 'Eat Street' to the historic Lennox Bridge. Micro tunnelling was used to minimise impacts to local businesses and pedestrians in comparison to street level works. To see which works are scheduled next for Parramatta's CBD, visit parramattalightrail.nsw.gov.au/parramatta-cbd.



Micro tunnelling is used to minimise ground-level noise and dust.

On the green

The first piece of 'green track' for Parramatta's new light rail network has been laid as part of a 12-month trial to test growth rate and durability, as well as experiment with soil layers and depths.

All around the world, green track contributes to increased biodiversity, noise reduction and urban cooling, and it looks good, too!

A first for NSW, the green track will feature in the Cumberland Hospital heritage precinct, Robin Thomas Reserve, Parramatta, and Tramway Avenue, Camellia, from 2023 – creating up to one kilometre in total of landscaped light rail.



Artist impression of the Parramatta Light Rail at Robin Thomas Reserve and (inset, top right) a prototype of the grass track.

What's next?

Late 2020

- Construction continues along the 12-kilometre corridor
- Micro tunnelling completed
- Track slab commencement in Westmead

Early 2021

- Track slab commencement in North Parramatta
- Track work begins in Carlingford
- Remediation works completed on the site of the Stabling and Maintenance Facility in Camellia

2023

- Parramatta Light Rail commences "turn up and go" services, every 7.5 minutes during peak periods

The light rail route

The \$2.4 billion Parramatta Light Rail will connect Westmead to Carlingford via the Parramatta CBD and Camellia, with the network expected to commence passenger services in 2023.



IT'S YESTERDAY ONCE MORE: Parramatta Light Rail heritage digs at Robin Thomas Reserve have unearthed some interesting artefacts, including items from the 1790s military barracks which once occupied the site and signs of early 19th-century domestic life, like this carved snake trinket (above) – a good luck charm, perhaps? Find out more about our site investigations at parramattalightrail.nsw.gov.au/heritage.



Translating and Interpreting Services

If you require the services of an interpreter, please contact the Translating and Interpreting Service (TIS National) on 131 450 and ask them to telephone Parramatta Light Rail on 1800 139 389.

Arabic

إذا كنت بحاجة إلى مترجم ، فيرجى الاتصال بخدمة الترجمة والترجمة الفورية (TIS National) على الرقم 131 450 واطلب منهم الاتصال بالسكك الحديدية الخفيفة بباراماتا (Parramatta Light Rail) على الرقم 1800 139 389

Traditional Chinese

如果您需要一位口譯員，請撥打131 450 到筆譯與口譯服務 Translating and Interpreting Service (TIS National)，要求他們撥打 Parramatta 輕軌 (Parramatta Light Rail) 的電話 1800 139 389

Simplified Chinese

如果您需要一位口譯員，請撥打131 450 到筆譯與口譯服務 Translating and Interpreting Service (TIS National)，要求他們撥打 Parramatta 輕軌 (Parramatta Light Rail) 的電話 1800 139 389

Hindi

यदि आपको दुभाषिए की आवश्यकता है तो कृपया अनुवाद व दुभाषिया सेवा (TIS National) को 131 450 पर फ़ोन करें और उनसे कहें कि वह पैरामाटा लाइट रेल (Parramatta Light Rail) से टेलिफोन नम्बर 1800 139 389 पर फ़ोन मिला दें

Korean

“통역사가 필요할 경우, 전화번호 131 450의 번역 및 통역 서비스 (TIS 내셔널)에 전화한 다음 1800 139 389로 파라마타 라이트 레일 (Parramatta Light Rail)에 전화해 달라고 요청하십시오.”



Like us on Facebook
at facebook.com/ParramattaLightRail

