

# Newsletter

July 2021



## Countdown is on for 'Eat Street Uncovered'

Parramatta's 'Eat Street' is one step closer to revitalisation, with more than 80 per cent of tracks installed along the dining strip, and major construction is on schedule to be completed in the coming month.

Construction along 'Eat Street' on Church Street, between Market Street and George Street, was fast-tracked last year in response to Covid-19.

Over the coming month, the community will see the area transformed with new paving, trees being planted, landscaping works, installation of smart poles and the removal of construction fencing.

From August, a Transport for NSW activation called 'Eat Street Uncovered' will be rolled out to celebrate



Pavers being installed alongside track on 'Eat Street'

the completion of major construction and the reinstatement of outdoor dining.

'Uncovered' will bring 'Eat Street' to life, encouraging the community to come visit the area to explore a fun and vibrant urban playground, and to rediscover the delights of the local restaurants, cafes and bars on offer. There will be events and activities for everyone.

Stage 1 of the Parramatta Light Rail will connect Westmead to Carlingford via the Parramatta CBD and Camellia, with a two-way track spanning 12 kilometres and is expected to begin services in 2023.



## Planning to commence for Stage 2

Planning and development works for Stage 2 of the Parramatta Light Rail will continue following the NSW Government's \$50 million commitment in the 2021-22 Budget, ensuring the right transport links are delivered between Greater Parramatta and the Olympic Peninsula.

The project team will focus on planning, utilities and geotechnical investigations, as well as progressing the project's Environmental Impact Statement.

The preferred route for Stage 2 will connect Stage 1 and Parramatta CBD to Ermington, Melrose Park, Wentworth Point and Sydney Olympic Park.

Stage 1 and 2 will provide links to existing transport infrastructure, including heavy rail lines, buses and ferries, as well as the future Sydney Metro West.

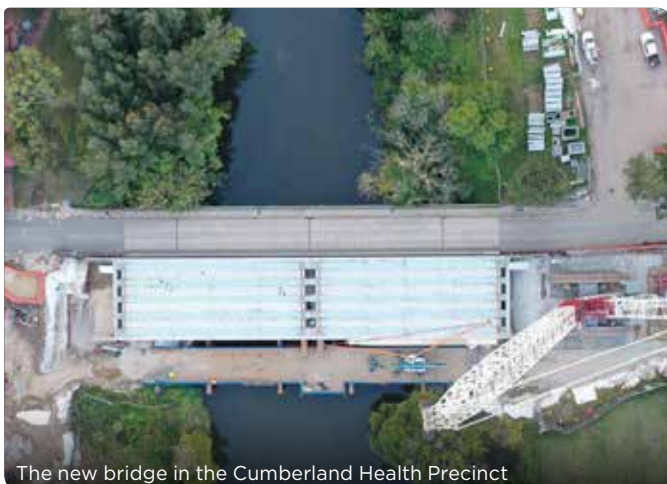
For more information, visit [parramattalightrail.nsw.gov.au/parramatta-olympic-park](https://parramattalightrail.nsw.gov.au/parramatta-olympic-park)

## Tracking well in Westmead and Cumberland

Works have been progressing well in the Westmead to Cumberland section, with light rail tracks along Hawkesbury Road between Helen Street and Jessie Street nearing completion.

The team have achieved a great milestone in the Cumberland Health Precinct, with the installation of the new 64-metre long and 13-metre wide bridge across the Parramatta River alongside the existing Bridge Road bridge.

A 600-tonne crawler was used to install ten girders, each weighing 63 tonnes, which support the deck of the bridge. With the support structures in place, the bridge deck will now be constructed, including light rail tracks, and new walking and bike-riding path.



The new bridge in the Cumberland Health Precinct



Reused ballast and track along Carlingford to Camellia corridor

## Sustainably on track

With a focus on sustainable construction practices, work is underway along the Carlingford to Camellia corridor to reuse materials from the former single-track T6 Carlingford Rail Line.

More than half of the ballast, 60 per cent of the rail tracks and 50 per cent of the sleepers removed is being reused.

The reuse of materials will reduce the project's carbon dioxide output by more than 3,500 tonnes, and demonstrates our commitment to achieving environmental and sustainable outcomes for the community while delivering the project.



## Lift off for project's largest new bridge

The state's second longest steel arch bridge span has been lifted into place over James Ruse Drive in Rosehill, a major milestone for the project.

The 1425-tonne steel arch structure spans 64-metres long, 16-metres wide and 15-metres high, and is the biggest new bridge construction on the project.

Using four self-propelled modular transporters, it took eight hours to install the structure onto the bridge piers during a meticulous overnight engineering operation. More than 200 workers were involved in building and moving the structure into place.

The Australian-made steelwork was fabricated by Western Sydney based company, S&L Steel, before it was transported to Rosehill for assembly, meeting the

project's commitment to using Australian resources wherever possible and supporting local jobs.

The bronze-coloured structure was built using weathering steel called corten, where its surface develops a self-protecting rust layer when exposed to weather. The insulating rust patina resists corrosion, requires no painting or weather-proofing, and does not compromise on structural strength.

From 2023, the bridge will provide customers access to the new Tramway Avenue light rail stop, and connect to the walking and bike-riding path to Carlingford.

Visit the Parramatta Light Rail Facebook page to see exciting footage of the bridge being lifted into place.

## Help name the bridge

You are now invited to provide suggested names for the new bridge. Naming bridges provides a useful navigational reference, particularly when it spans a major arterial road such as James Ruse Drive.

It also allows the community to recognise and celebrate cultural, historical and social connections in the area. A Bridge Naming Consultation Panel will review and assess the suggestions received. Submissions are open until 30 July 2021. To find out more, visit [parramattalightrail.nsw.gov.au/bridge-name](https://parramattalightrail.nsw.gov.au/bridge-name)



Artist impression of the Tramway Avenue stop



Students from St Joachim's Catholic Primary School learning about the project

## Back to school

The Parramatta Light Rail team were thrilled to welcome students from St Joachim's Catholic Primary School and Lidcombe Public School for guided site walks in the Parramatta CBD. The energetic students came prepared with their many questions and were excited to witness some of the works underway on the project.

The site walk forms part of the inquiry-based learning program currently being undertaken by teachers across the local area. This is a fantastic collaboration between Transport for NSW and Western Sydney University, and sees hundreds of students learn about light rail in their classrooms.



## What's next?

### July - August 2021

- Remediation works completed on the site of the Stabling and Maintenance Facility in Camellia
  - Stabling and Maintenance Facility construction begins
- Light rail major construction completed on 'Eat Street'

### August - December 2021

- 'Eat Street Uncovered' activation

### 2023

- Parramatta Light Rail commences services

## A good feed



Koala enjoying the donated leaves and branches

Committed to reusing and recycling material where possible, the project recently donated leaves and branches from trees removed along the construction corridor to the Featherdale Sydney Wildlife Park, to be used as food for the koalas.



### Translating and Interpreting Services

If you require the services of an interpreter, please contact the Translating and Interpreting Service (TIS National) on 131 450 and ask them to telephone Parramatta Light Rail on 1800 139 389.

#### Arabic

إذا كنت بحاجة إلى مترجم، فيرجى الاتصال بخدمة الترجمة والترجمة الفورية (TIS National) على الرقم 131 450 واطلب منهم الاتصال بالسكك الحديدية الخفيفة بباراماتا (Parramatta Light Rail) على الرقم 1800 139 389

#### Traditional Chinese

如果您需要一位口譯員，請撥打131 450 到筆譯與口譯服務 Translating and Interpreting Service (TIS National)，要求他們撥打 Parramatta 輕軌 (Parramatta Light Rail) 的電話 1800 139 389

#### Simplified Chinese

如果您需要一位口譯員，請撥打131 450 到筆譯與口譯服務 Translating and Interpreting Service (TIS National)，要求他們撥打 Parramatta 輕軌 (Parramatta Light Rail) 的電話 1800 139 389

#### Hindi

यदि आपको दुभाषिए की आवश्यकता है तो कृपया अनुवाद व दुभाषिया सेवा (TIS National) को 131 450 पर फ़ोन करें और उनसे कहें कि वह पैरामाटा लाइट रेल (Parramatta Light Rail) से टेलिफोन नम्बर 1800 139 389 पर फ़ोन मिला दें

#### Korean

“통역사가 필요할 경우, 전화번호 131 450의 번역 및 통역 서비스 (TIS 내셔널)에 전화한 다음 1800 139 389로 파라마타 라이트 레일 (Parramatta Light Rail)에 전화해 달라고 요청하십시오.”



**Like us on Facebook**  
at [facebook.com/ParramattaLightRail](https://facebook.com/ParramattaLightRail)

