

Newsletter

December 2021



Eat Street drew crowds during major sports events.

Parramatta's revitalised Eat Street reopens

Parramatta's iconic 'Eat Street' drew significant crowds on its reopening week, with football fans verging on the iconic precinct for a pre- and post-game meal fix during the Matildas sporting events.

With major construction fast-tracked in response to Covid-19 and construction fences removed between Lennox Bridge and George Street, many restaurants opened their doors to welcome the new influx of street-goers.

A lively activation encouraged locals to explore the outdoor dining features, planters and greenery, as well as the 'flush finish' shared pedestrian and light rail corridor - a first for Western Sydney.

More than 350 people worked on Eat Street each day, which involved hand-laying 300,000 cobblestone pavers between the tracks and installing 34,000 footpath pavers.

The project worked with City of Parramatta Council to deliver an outcome for Eat Street that balanced the needs of local businesses and the community along with the safe operations of light rail.



Eat Street opens for business.

News of Eat Street's reopening reached nearly 5.4 million people across Australia, and drew significant crowds of locals and visitors back to the precinct, particularly during recent major sporting events.

Watch a video of Eat Street's construction on our Facebook page: facebook.com/parramattalightrail.

Find out more at

parramattalightrail.nsw.gov.au



Tracking along on Stage 1

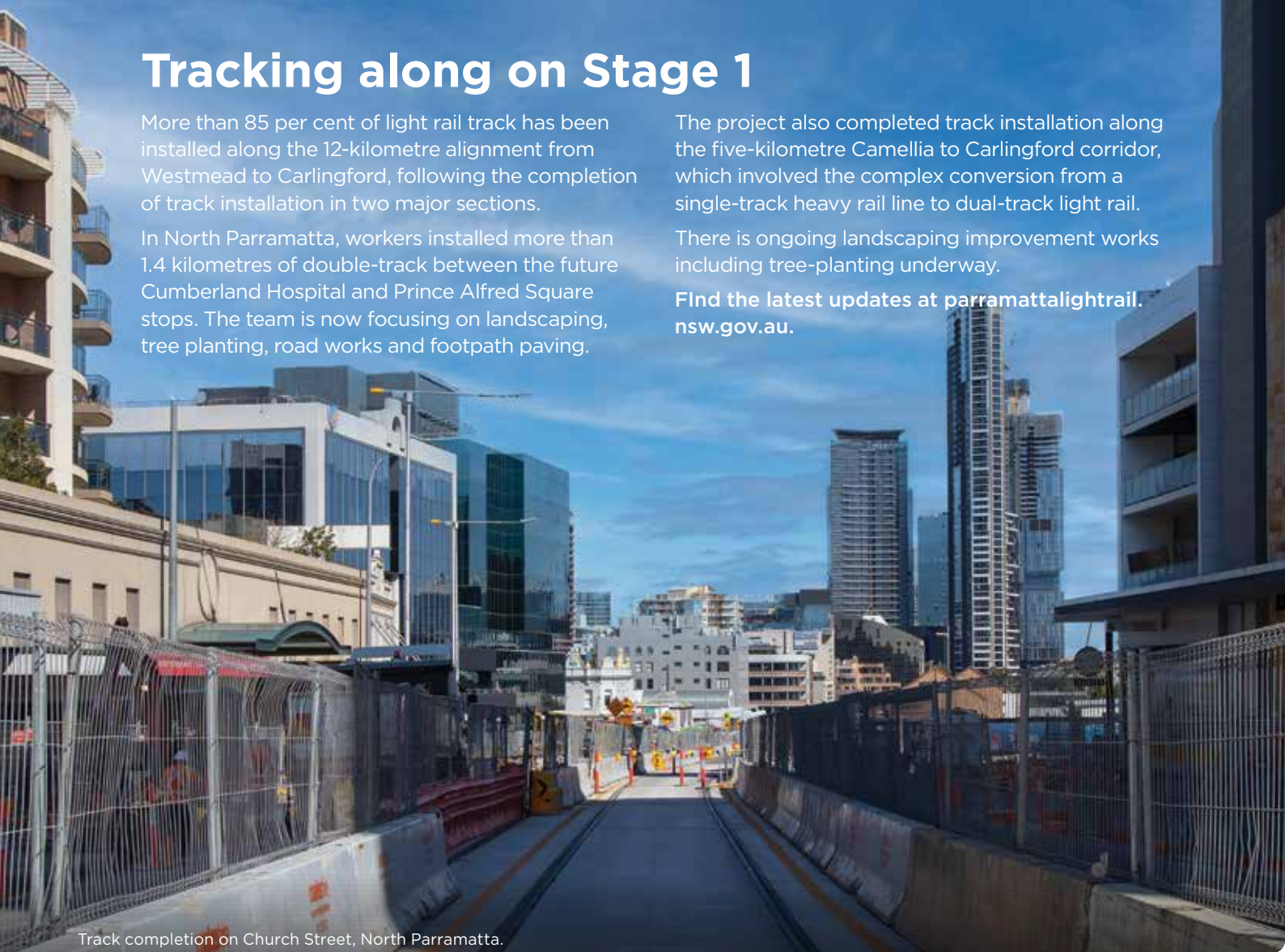
More than 85 per cent of light rail track has been installed along the 12-kilometre alignment from Westmead to Carlingford, following the completion of track installation in two major sections.

In North Parramatta, workers installed more than 1.4 kilometres of double-track between the future Cumberland Hospital and Prince Alfred Square stops. The team is now focusing on landscaping, tree planting, road works and footpath paving.

The project also completed track installation along the five-kilometre Camellia to Carlingford corridor, which involved the complex conversion from a single-track heavy rail line to dual-track light rail.

There is ongoing landscaping improvement works including tree-planting underway.

Find the latest updates at parramattalightrail.nsw.gov.au.



Track completion on Church Street, North Parramatta.

James Ruse Drive bridge to get new slab, name

The new bridge over James Ruse Drive is taking shape following rail set up, concrete pours, and shared walking and bike-riding path (active transport link) construction.

Transport for NSW will also reveal the name of the bridge shortly, after a panel of stakeholders met to consider more than 500 suggestions and determine a 'top five' list. We look forward to revealing the new name, which as a result of extensive consultation, will reflect the cultural, historical and social connections to the Greater Parramatta area.



Track installation progress across the new bridge.

Westmead takes shape

The transformation of Westmead continues with track slab pours and rail set up progressing in the area, as well as works for the new scissor crossover on Hawkesbury Road, which will enable the light rail to end its journey from Carlingford and commence the return trip.

With the temporary jetty removed near the new bridge in the Cumberland Precinct, the team is focused on constructing the shared walking and bike-riding path, and installing light rail track across the bridge structure.



Aerial photo of Westmead.



New trees planted at Tramway Avenue, Parramatta.

More trees for a greener Parramatta

Transport for NSW is planting more than 3500 new trees as part of Stage 1 of the light rail project, creating improved air quality and shade for the community.

The project's new Tree Offset Strategy sets out the many tree species to be planted along the alignment and its surrounds, including at least five mature figs and 76 cuttings from trees removed from the area.

The Strategy will also help ensure trees are planted in the right areas, are diverse, visually appealing and low in maintenance - creating a greener Parramatta that everyone can enjoy.

A number of active measures to monitor and protect local fauna have also been taken such as installing possum nesting boxes and tracking habitat movements of native grey-headed flying foxes.

To find out more about the project's environmental initiatives, visit parramattalightrail.nsw.gov.au.

Leading in design

Stage 1 of the Parramatta Light Rail's infrastructure works package has achieved a 'leading' rating for design from the Infrastructure Sustainability Council of Australia.

This is the highest industry benchmark of its kind, and demonstrates the project's commitment to achieve sustainable outcomes throughout the delivery of light rail.

Some of the project's innovative and sustainable outcomes include:

- 36 per cent reduction in carbon emissions through construction and operations by designing areas with a wire-free system, and reusing materials
- First light rail project in NSW to have 'grass track'
- First light rail project in Australia to install a noise and vibration reducing product on the tracks
- Positive social impacts through job creation and employment opportunities.

Find out more: visit parramattalightrail.nsw.gov.au/isca-design-rating.



Artist impression of 'grass track' in the Cumberland Precinct.



New sign installed to warn cyclists.

Keeping cyclists safe

Cyclist and pedestrian safety is a key priority for the light rail project as people become familiar with the new surroundings as construction areas reopen.

New signs have been fitted to warn cyclists when travelling across the track, following the installation of track across some intersections in Parramatta's CBD.

The signs remind cyclists to take care, with the safest way to cross the track is to ride straight over at a 90-degree angle.

History preserved

The team highlighted its commitment to preserving Parramatta's rich cultural history by reusing century-old recycled sandstone blocks from the area for kerbing in North Parramatta and Cumberland.



Recycled sandstone kerbing in North Parramatta.

Eat Street activated

To celebrate the completion of major construction along the dining strip, Transport for NSW is delivering 'Eat Street Uncovered', a new activation to bring the area to life.

In a bid to attract locals and visitors to Eat Street and further support local businesses, the team worked hard installing vibrant neon lighting, outdoor dining furniture and decor to create a fun and exciting atmosphere for the public to enjoy. More excitement is coming, with interactive installations and fun activities to entertain the whole family.

We have also launched a new 'Shop and Win' campaign to support businesses across the alignment by incentivising shoppers with fantastic weekly prizes, local giveaways and major prize draw.

Find out how you can win, visit activateparramatta.com.au.



Crowds enjoying Parramatta's Eat Street activation.



Tell us what you think about Stage 2

Planning and development work is progressing on Stage 2 of the Parramatta Light Rail, which aims to connect Stage 1 and the Parramatta CBD to Ermington, Melrose Park, Wentworth Point and Sydney Olympic Park.

The project team is currently focused on planning, utilities and geotechnical investigations, and developing an Environmental Impact Statement.

Consultation with local stakeholders and the community is key to informing the planning and design phases of the project. As part of this work, the team is seeking your feedback to understand the potential impacts and outcomes of this important project.

To share your insights on Stage 2, scan the QR code to complete the survey.



SHOP & WIN

**Ambassador Lounge tickets to
Western Sydney Wanderers FC V Sydney FC
for you and nine friends valued at
\$3000***

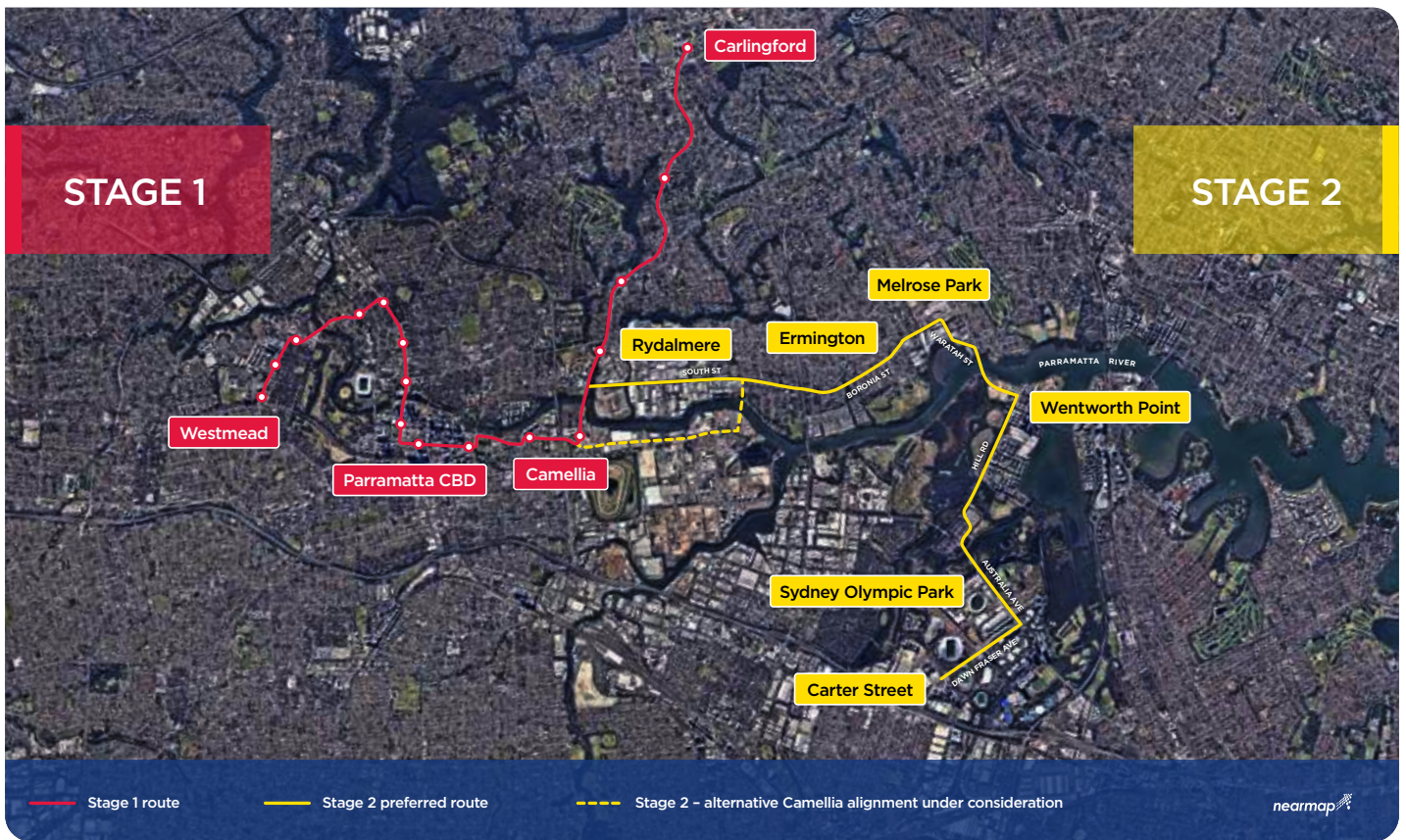
**Enter as many
times as you like
15 Nov – 19 Dec 2021**

How to enter

Simply spend \$10 or more in one transaction at a participating retailer along the Parramatta Light Rail alignment and email a picture of the receipt to activateparramatta@transport.nsw.gov.au for your chance to win.

**You will also go in the draw to win 1 of 4
weekly prizes valued at \$200 each.**

This campaign is part of 'Activate Parramatta', a Transport for NSW plan to support local businesses during construction of the Parramatta Light Rail. To find out more, visit activateparramatta.com.au. *Terms and conditions apply.



Fact sheets for schools

Two fact sheets for primary school educators and children are now available on our website.

The 'What is light rail?' fact sheet introduces students to the benefits of light rail transport, while the 'Grey-headed flying foxes' fact sheet highlights our initiatives to protect this local vulnerable species.



New fact sheets for children on our website.

What's next?

December 2021

- Stabling and maintenance facility construction begins
 - Ongoing track installation, and construction of light rail stop platforms and active transport links

2022

- Light rail stop names announced
 - Track installation complete
- Completion of infrastructure works
- Light rail stop construction begins

2023

- Passenger services expected to commence



Translating and Interpreting Services

If you require the services of an interpreter, please contact the Translating and Interpreting Service (TIS National) on 131 450 and ask them to telephone Parramatta Light Rail on 1800 139 389.

Arabic

إذا كنت بحاجة إلى مترجم، فيرجى الاتصال بخدمة الترجمة والفورية (TIS National) على الرقم 131 450 واطلب منهم الاتصال بالسكك الحديدية الخفيفة بباراماتا (Parramatta Light Rail) على الرقم 1800 139 389

Traditional Chinese

如果您需要一位口譯員，請撥打131 450 到筆譯與口譯服務 Translating and Interpreting Service (TIS National)，要求他們撥打 Parramatta 輕軌 (Parramatta Light Rail) 的電話 1800 139 389

Simplified Chinese

如果您需要一位口譯員，請撥打131 450 到筆譯與口譯服務 Translating and Interpreting Service (TIS National)，要求他們撥打 Parramatta 輕軌 (Parramatta Light Rail) 的電話 1800 139 389

Hindi

यदि आपको दुभाषिए की आवश्यकता है तो कृपया अनुवाद व दुभाषिया सेवा (TIS National) को 131 450 पर फ़ोन करें और उनसे कहें कि वह पैरामाटा लाइट रेल (Parramatta Light Rail) से टेलिफोन नम्बर 1800 139 389 पर फ़ोन मिला दें

Korean

“통역사가 필요할 경우, 전화번호 131 450의 번역 및 통역 서비스 (TIS 내셔널)에 전화한 다음 1800 139 389로 파라마타 라이트 레일 (Parramatta Light Rail)에 전화해 달라고 요청하십시오.”



Like us on Facebook
at facebook.com/ParramattaLightRail

