

Transport for NSW

Parramatta Light Rail

Animation of Parramatta's history acknowledged



January 11, 2022



Parramatta Light Rail

[NSW Government logo]

[Words on screen]: Parramatta Light Rail

ACKNOWLEDGING PARRAMATTA'S HISTORY

[Words on screen]: Acknowledging Parramatta's History



[Words on screen]: Right across the Parramatta Light Rail alignment, we have used innovative construction from archaeological foundations



**[Words appear on rock]:
Aboriginal Land – Always was always will be.**



[Timeline appears on rock]:

- **30,000 yrs ago – Uncovered cooking hearths over 30,000 years old**
- **25,000 yrs ago – Parramatta located within the Cumberland Plain, was a strategic location and meeting point for many people**
- **20,000 yrs ago – More than 1000 artefacts were recovered from across the 12 km light rail alignment**
- **1700s to 1800s – Aboriginal people recycled materials from early settlers to make their own tools**



[Words on screen]:

1826 – Lennox Bridge transformed – a bridge for tomorrow



[Words on screen]: 1839 [Animation shows bridge transformation]



[Words on screen]: 1889 [Animation shows further transformation]



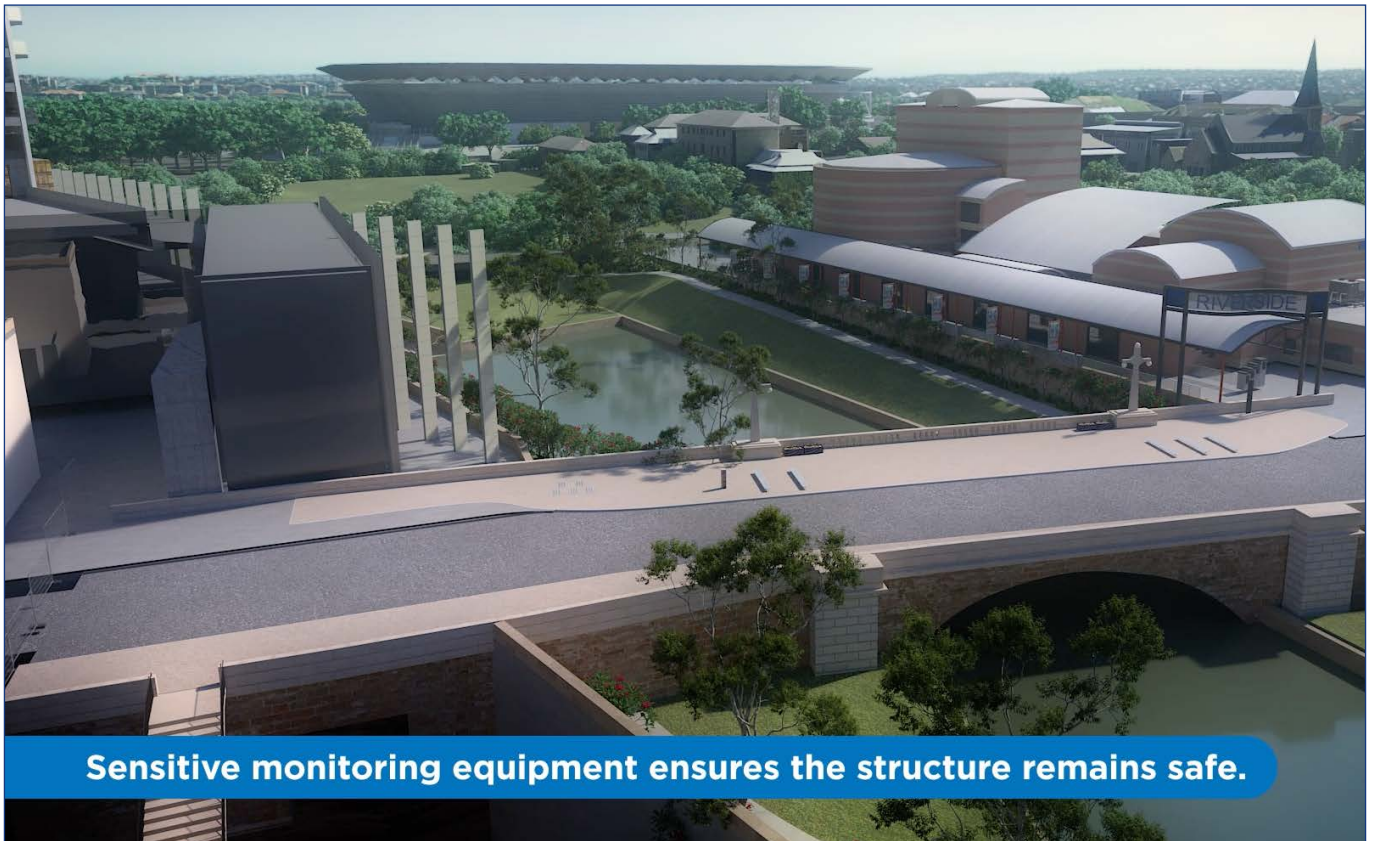
[Words on screen]: 1832-1960
[Animation shows further transformation]



[Words on screen]: 1980-2006 [Animation shows resurfacing of bridge and further modernisation]



[Words on screen]: On Church Street, including the Lennox Bridge, track slabs are laid in concrete



[Words on screen]: Sensitive monitoring equipment ensures the structure remains safe



[Words on screen]: Over 10,000 'cobblestones' have been laid on the bridge

[Amination shows cobblestone paving and footpath installation over bridge]



[Words on screen]: Light rail track on Lennox Bridge connecting people from 2023.

[Animation shows impression of light rail vehicle travelling across Lennox Bridge]



Parramatta Light Rail

[NSW Government logo]

[Words on screen]: Parramatta Light Rail