

Parramatta Light Rail Stage 2

Enabling Works and Ermington Boat Ramp



Parramatta Light Rail Stage 2 is the NSW Government's latest public transport project being delivered to serve a growing Western Sydney. Stage 2 will connect Stage 1 and Parramatta's CBD to Sydney Olympic Park via Camellia, Ermington, Melrose Park and Wentworth Point with a two-way track spanning 10 kilometres and 14 accessible stops.

What's happening?

The Environmental Impact Statement (EIS) for Parramatta Light Rail Stage 2 was on public exhibition from 9 November to 16 December 2022 to allow community and stakeholders the opportunity to learn more about the project and provide feedback. Transport for NSW is now preparing a Response to Submissions, which will address all comments received during this time and will be released later this year.

A bridge between Melrose Park and Wentworth Point will be built to provide public and active transport access to and from proposed redevelopment areas in Melrose Park, and the developing suburb of Wentworth Point across the Parramatta River.

Construction is expected to commence in 2024 (subject to planning approvals) with enabling works to build the public and active transport bridge. This new bridge will be the first significant crossing over the Parramatta River since 1987.

The bridge will be relocated to avoid direct impacts to the residential properties on Wharf Road, Melrose Park and also reduce the impact to sensitive mangrove vegetation. The existing high-voltage transmission tower situated in Archer Park (near Ermington Boat Ramp) may also be relocated to enable the relocation of the bridge between Melrose Park and Wentworth Point.

When will it happen?

As noted in the EIS, to keep the public and our workers safe, the Ermington Boat Ramp will be closed for up to three years. Construction is expected to commence in 2024 (subject to planning approvals).

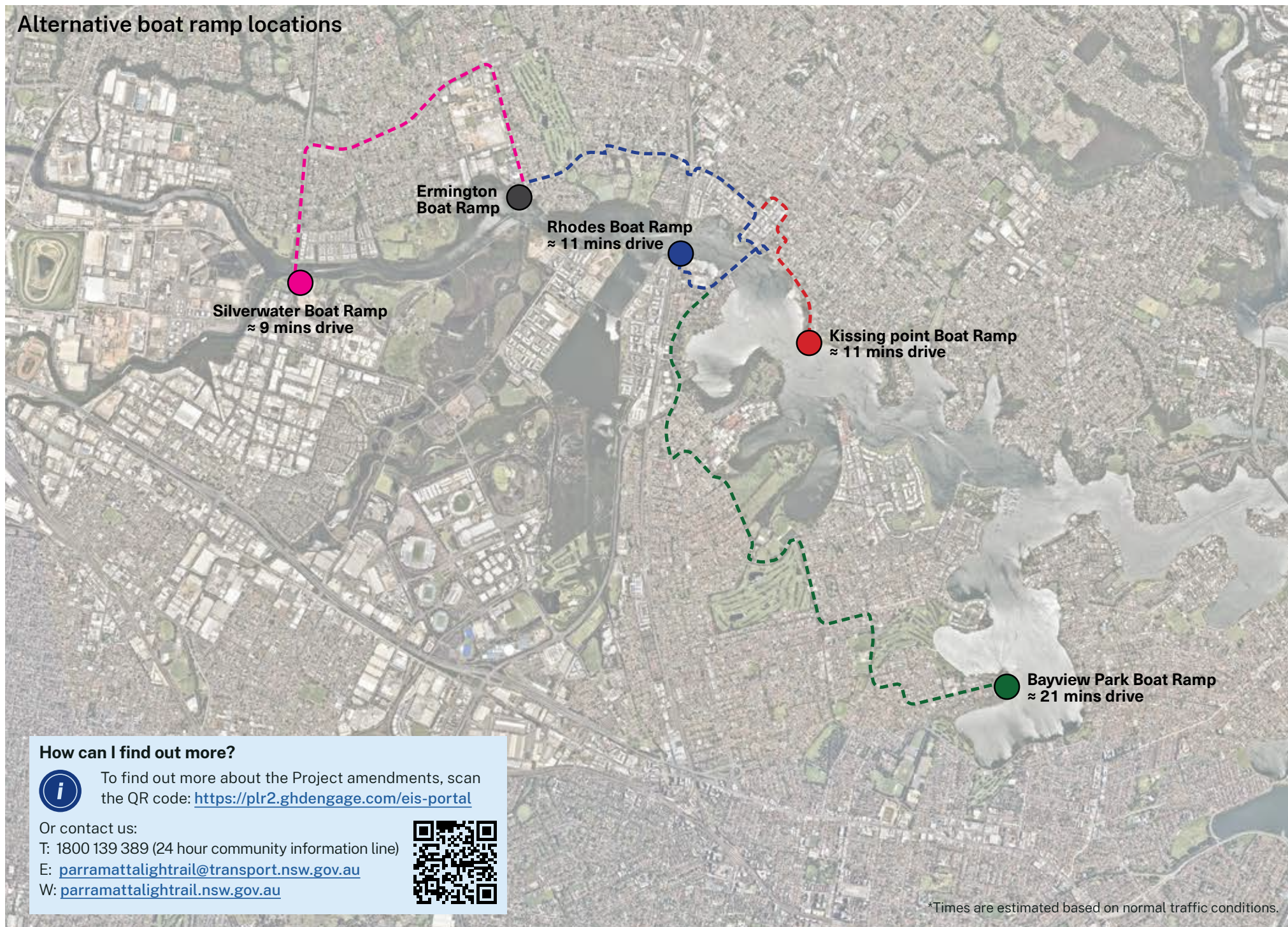


Where can I launch my boat?

The boat ramp, and surrounding area will be used to facilitate construction of the bridge between Melrose Park and Wentworth Point. If you wish to access the river, you can use one of the nearby boat ramps (see map over the page for details and approximate travel distances).

Transport for NSW is reviewing opportunities to ease the impacts of the closure on the local boating community, including reducing the length of time the boat ramp is closed and investigating options to increase trailer parking capacity at neighbouring boat ramps.

Alternative boat ramp locations



How can I find out more?



To find out more about the Project amendments, scan the QR code: <https://plr2.ghdengage.com/eis-portal>

Or contact us:

T: 1800 139 389 (24 hour community information line)

E: parramattalightrail@transport.nsw.gov.au

W: parramattalightrail.nsw.gov.au



*Times are estimated based on normal traffic conditions.