

Out-of-hours work

Macquarie Street, Parramatta

Parramatta Light Rail Stage 1 project

5 January 2024 – IW539



Transport for NSW acknowledges the Dharug people as the Traditional Custodians of the lands on which we work and pay respects to Elders past and present.

The Parramatta Light Rail is one of the NSW Government's latest major transport infrastructure projects being delivered to serve a growing Sydney.

Parramatta Light Rail Stage 1 will connect Westmead to Carlingford via the Parramatta CBD and Camellia. It is expected to open in 2024.

Following completion of the tracks and stops, work continues on the testing of the power substations, signalling, track infill removal, pole installation and overhead wiring in preparation for light rail vehicle testing this summer. Minor finishing work on the major infrastructure is being completed along the alignment by **Parramatta Connect**.

Where and what work are we doing?

Work to install a driveway will be carried out at 183 Macquarie Street, Parramatta.

See the map overleaf for the work location.

When we'll be working

The work will take place from **8pm, Sunday 14 January 2024** and will be completed over one week, during the day and night.

Standard work hours are **7am to 7pm, Monday to Friday** and **8am to 6pm, Saturday**.

Work will also be carried out at night, between **8pm and 5am**. Noisy night work is carried out for a maximum of four nights in a seven-day period.

See the work schedule at parramattalightrail.nsw.gov.au/weekly-works.

Traffic and pedestrian access

Temporary pedestrian and traffic control will be in place as required to ensure safe movements around the work zones. Vehicle access to 183 Macquarie Street will be restricted during the work.

Access for waste collection and emergency services will be maintained at all times.

Please follow the direction of traffic controllers and signs, proceed carefully and allow extra travel time.

What equipment will be used?

Equipment will include, but is not limited to, traffic barriers, drills, excavator, concrete saw cutter, jackhammer, power tools, concrete agitator, trucks and light vehicles.

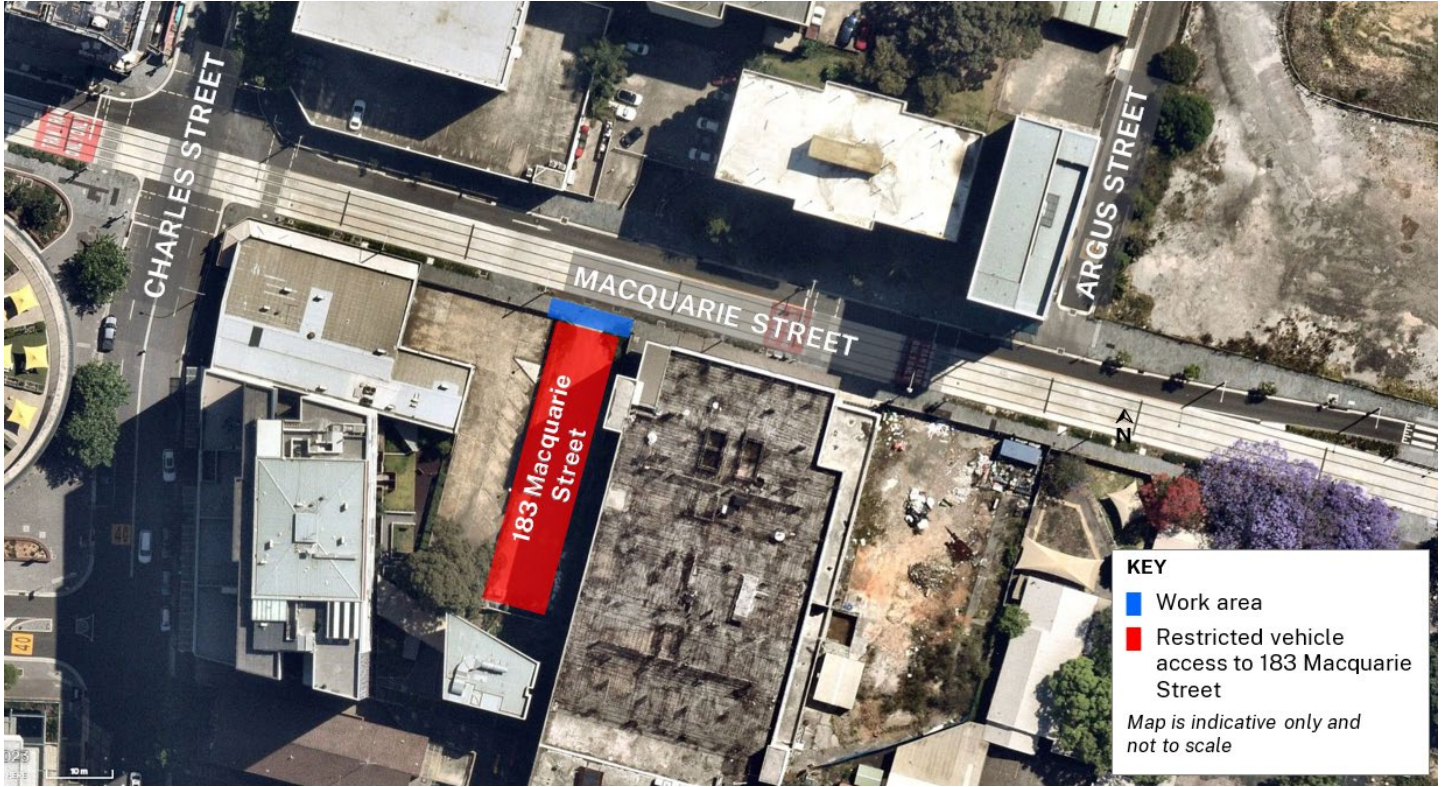
What will this mean for you?

There will be some noise associated with this work, which can be loud and disruptive.

Some of the ways we manage this is by:

- using non-tonal reversing beepers and noise blankets
- monitoring and reviewing noise levels
- consulting with directly affected residents and businesses
- turning off equipment when not in use.

Location of work area



Contact us



24-hour community information line
1800 139 389



parramattalightrail@transport.nsw.gov.au



www.parramattalightrail.nsw.gov.au



Level 4, 4 Parramatta Square,
12 Darcy Street, Parramatta NSW 2150



Scan the code to visit our website for
more information



Interpreter service

For languages other than English call 131 450
Arabic • Greek • Hindi • Mandarin • Vietnamese

لطلب خدمة الترجمة الشفهية للغات غير الإنجليزية اتصل
بالرقم **131 450**

Για υπηρεσίες διερμηνείας σε άλλες γλώσσες εκτός από
τα Αγγλικά καλέστε το **131 450**

अंग्रेजी के अतिरिक्त अन्य भाषाओं के लिए दुभाषिया सेवा
131 450 पर कॉल करें

获取英语以外的其他语言口译协助服务可以致电**131 450**

Để có dịch vụ thông ngôn cho các ngôn ngữ khác tiếng
Anh, gọi số **131 450**

www.transport.nsw.gov.au/privacy-statement#Your_Privacy



For the latest traffic updates:

Call 132 701, visit livetraffic.com or
download the app Live Traffic NSW