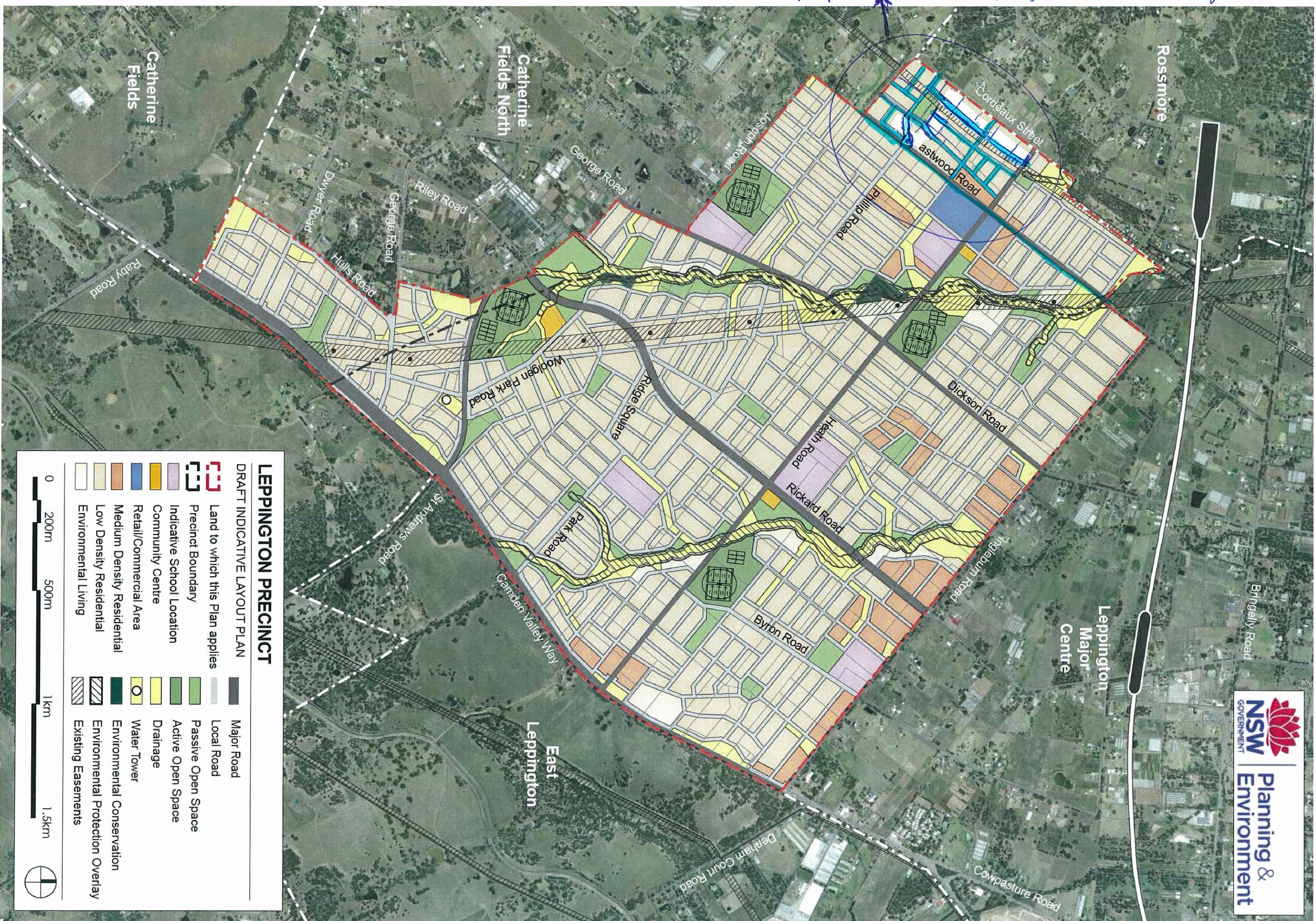


Proposed indicative layout plan showing the streets



LEPPINGTON PRECINCT

DRAFT INDICATIVE LAYOUT PLAN

| | | | |
|--|---------------------------------|--|----------------------------------|
| | Land to which this Plan applies | | Major Road |
| | Precinct Boundary | | Local Road |
| | Indicative School Location | | Passive Open Space |
| | Community Centre | | Active Open Space |
| | Retail/Commercial Area | | Drainage |
| | Medium Density Residential | | Water Tower |
| | Low Density Residential | | Environmental Conservation |
| | Environmental Living | | Environmental Protection Overlay |
| | | | Existing Easements |

0 200m 500m 1km 1.5km