

This submission is by Matthew O'Reilly - Bachelor of Natural Resource Management  
On behalf of and endorsed by the Saddle Ridge Local Area Planning Management Association  
It pertains primarily to the Coastal Zones along Byron Shire and in particular the area around Brunswick Heads where the association is based.  
Contact 0448690159 or mattheworeillytm@gmail.com

### **Coastal Use Area Zone**

We support the inclusion of the coastal use area zone and believe that a 1km zone extending landwards from the coastline and from estuaries is appropriate. The Coastal Use Area shown on the interactive map accurately reflects Coastal Use Areas in Byron Shire and around Brunswick Heads.

### **Coastal Environment Area Zone**

We support the inclusion of the coastal environment area and the inclusion of state waters and estuaries up to 1km beyond the highest astronomical tide for the estuary. We also support the area extending 100m landwards.

We have particular concerns that some estuarine waters that fit within this description have not been included in the draft online map.

In particular the estuarine reaches of Simpsons Creek, Everitts Creek, Tyagarah Creek, Belongil Creek, Saltwater Creek, Midjimbil Creek, the main arm of the Brunswick River, Mullumbimby Creek and other lower level estuaries around Mullumbimby and Brunswick Heads have not been mapped to their full tidal extent. This is very clear from the interactive map as significant areas of estuarine mangroves are clearly visible outside the area shaded as coastal environment areas.

Map 1 is the area around Brunswick Heads and Mullumbimby and the Brunswick River. It shows estuarine mangrove and salt marsh tidal areas that have not been included in the Coastal Environment Areas map.

### **Coastal Wetlands and Littoral rainforest Areas**

We support the inclusion of the 100m proximity zones surrounding coastal wetlands and littoral rainforests.

However in relation to Byron Shire and the area around Brunswick Heads in particular your coastal wetland and littoral rainforest mapping seems to be far behind the most recent vegetation maps of Byron Shire. There seems to be no reason why some coastal wetlands are included and others are not. Map2 shows some mapped coastal wetlands along the Brunswick River. The coastal wetland boundaries shown on the interactive map do not include the full extent of the wetlands and the map should be changed to include the entire wetland. Map 3 shows the same area with the latest Byron Council vegetation community mapping. It is clear that the coastal wetland communities already included as SEPP wetlands extend further than the current map indicates. The additional areas of the same vegetation communities should also be included in the SEPP map.

This is just one example from a small area but it is representative of all the Brunswick River coastal area and Byron Shire as a whole. The latest Byron Shire vegetation mapping has substantial areas of coastal wetlands and littoral rainforests mapped but most of them are not included in the SEPP maps.

We recommend that all coastal wetland and littoral rainforest vegetation communities mapped in Byron Shire be included in the new SEPP maps.

The latest Byron Shire vegetation community map is available from Byron Shire Council.

### **Everitt's Creek Coastal Wetland vegetation communities**

Surrounding and in some cases located on our members properties and bounded by the Saddle Road, Mullumbimby Road, Tandys Lane and the old Pacific Highway and dissected by Gulgan Road and the Pacific Highway are a series of contiguous coastal wetland vegetation communities that are connected by the Everitts Creek catchment. These should be specifically included in the SEPP coastal wetland mapping. Map 4 shows these coastal wetland communities circled in red. None of these coastal wetlands are included in the current SEPP mapping but they are made up of the same vegetation communities that are included in the SEPP elsewhere. We recommend these coastal wetland communities along Everitt's Creek be included in the SEPP.

### **Byron Coastal Zone Management Plan**

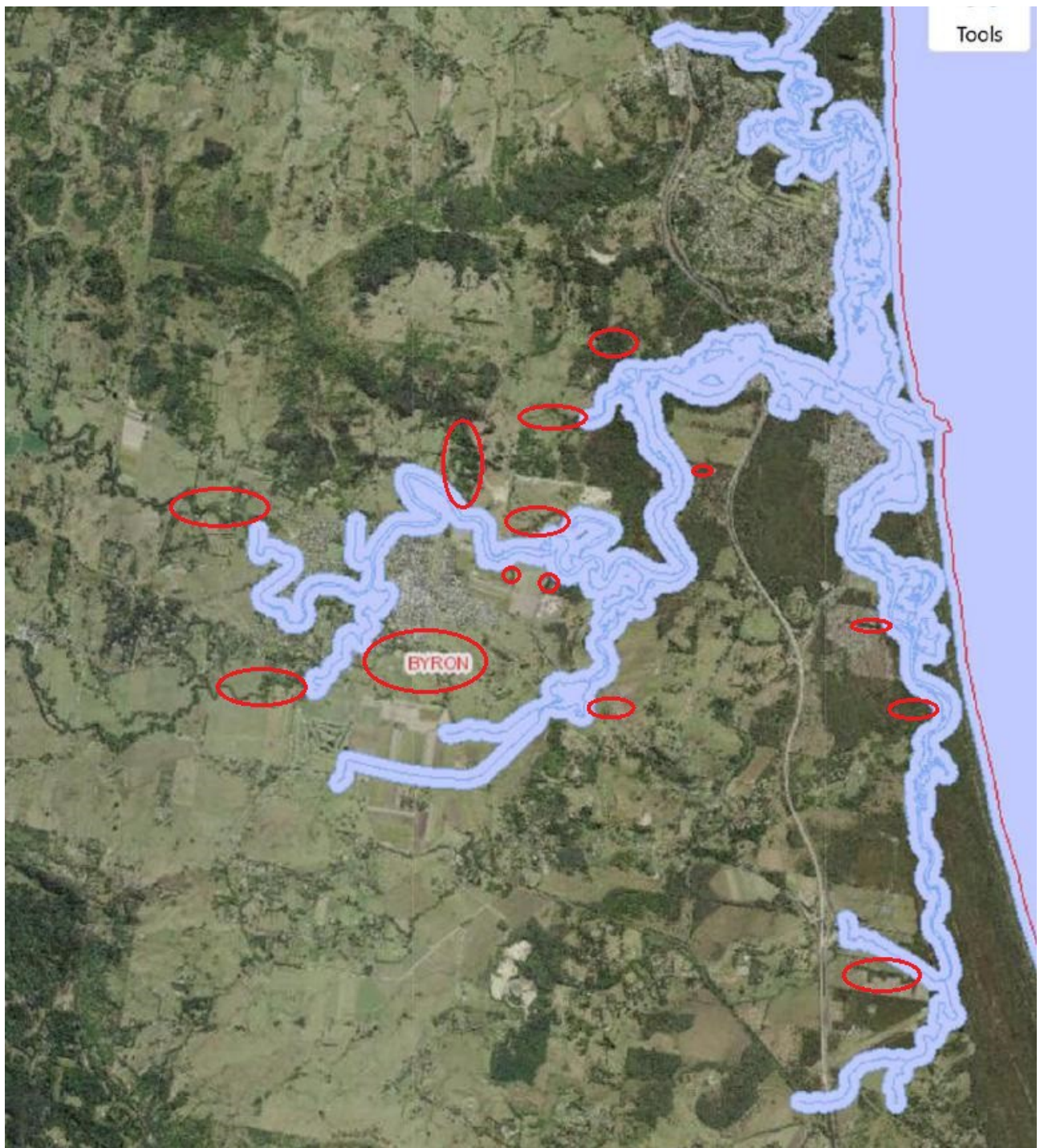
In light of these coastal zone reforms the recently completed Byron Coastal Management Zone Plan should be returned to the Council to be reviewed and updated.

The Byron Coastal Zone Management Plan should specifically make reference to new mapping expanding coastal wetlands, littoral rain forests, coastal environmental zones and coastal use areas.

During the review of the Byron Coastal Zone Management Plan all Coastal Wetlands and Littoral Rainforest Vegetation communities that were identified as part of deferred Environmental zonings should be included in the Plan.

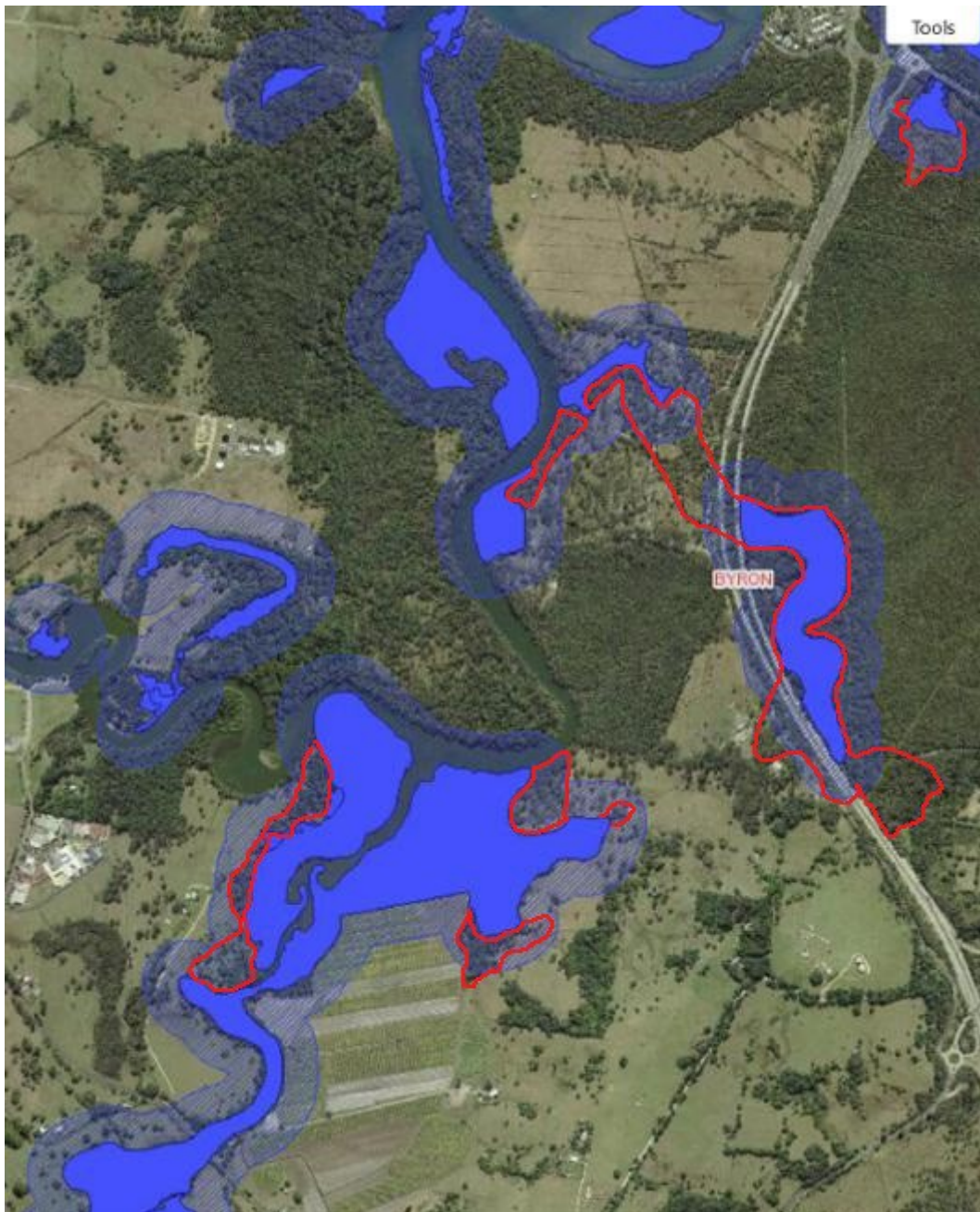
### **Exempt Development**

Development designated as “exempt development” in planning instruments should NOT be permitted in Coastal Wetland or Littoral rainforest Areas without consent. And Environmental Impact studies should be required to be carried out for exempt development occurring in these areas or in proximity to these areas.

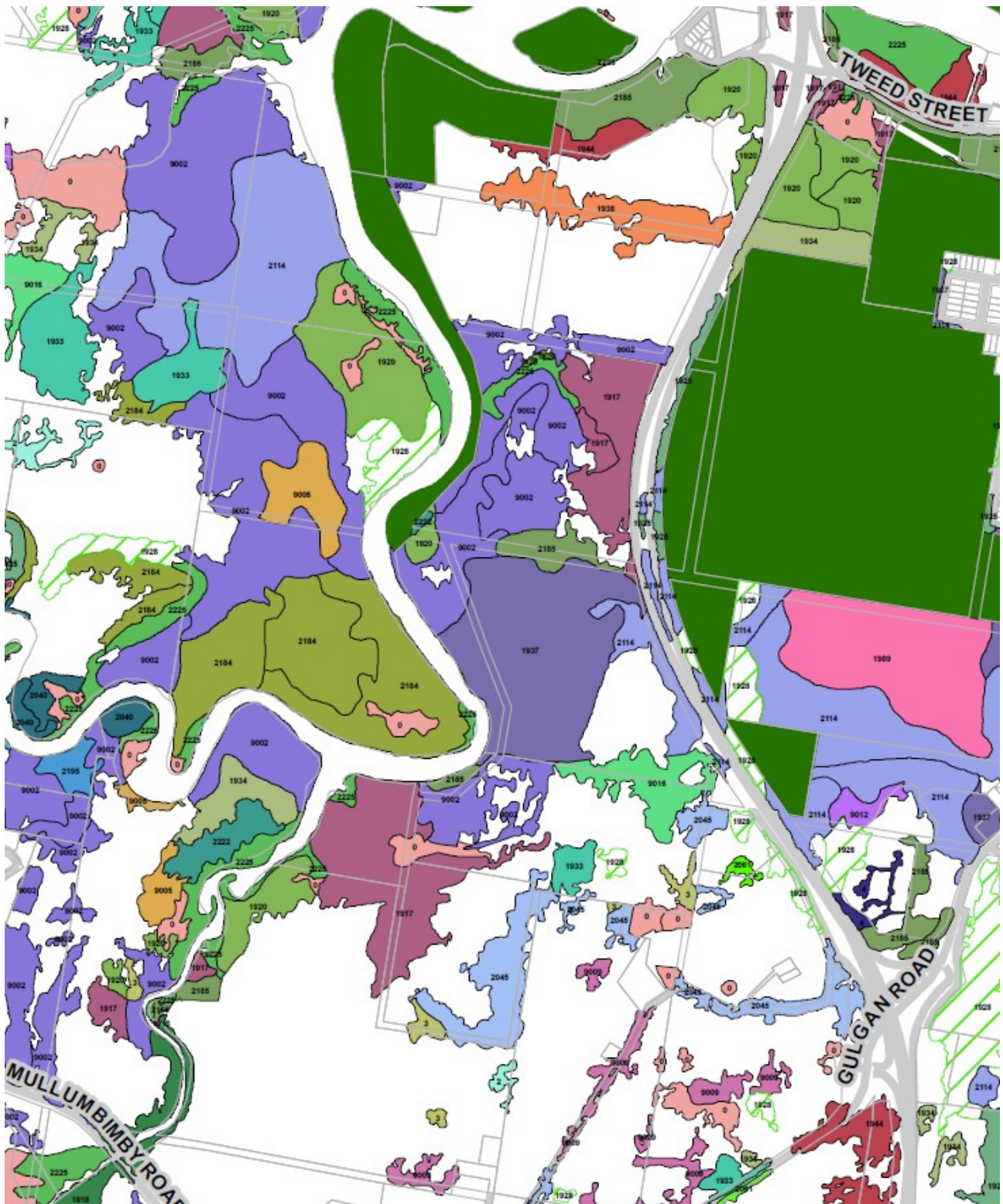


Map 1 Coastal Environment Areas along the Brunswick river. Additional areas circled in red.



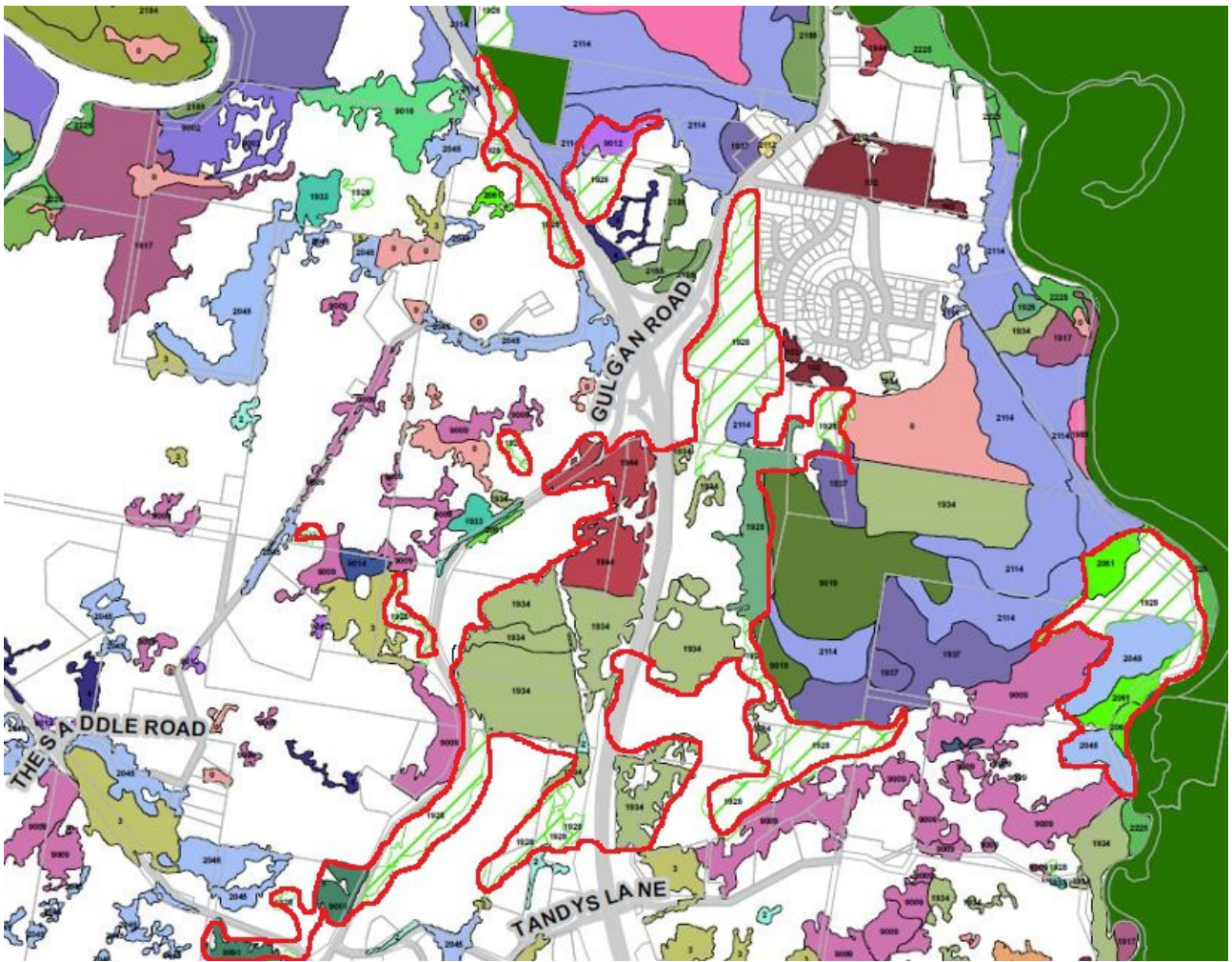


Map 2 SEPP coastal wetlands map of the Brunswick River and Kings Creek just west of Brunswick Nature reserve. Additional contiguous wetland areas circled in red.



Map 3 2016 Byron Shire Vegetation communities map showing same area as Map 2





Map 4 Everitt's Creek Coastal Wetland vegetation communities that should be included in the SEPP maps