



# WORLDWIDE DISCOVERY VOYAGES

Antarctica • The Arctic • Europe & The Mediterranean  
The Americas & Caribbean • Indonesia, Australia & The Pacific



[sceniceclipse.com](https://sceniceclipse.com)

2023/2024



# WHERE ULTRA-LUXURY MEETS DISCOVERY

## *Two Helicopters<sup>^</sup>*

Soar above the breathtaking landscapes by helicopter and discover the many wonders beyond the horizon.



## *Kayaks & Stand-up Paddleboards*

Discover nature up-close in our tandem kayaks and stand-up paddleboards. Enjoy truly all-inclusive, active explorations.

## *Observation Lounge*

Provides optimal viewing with Swarovski telescopes and a place to relax.

## *Advanced Heating & Ventilation*

Advanced Heating, Ventilation, and Air Conditioning (HVAC) system provides 100% fresh air throughout the Discovery Yachts.

## *Observation Deck*

Spacious Observation Terrace overlooking the front of the yacht with sweeping views.

## *State-of-the-Art Technology*

A strengthened hull, forward bow thrusters and an electronic Azipod propulsion system enable safe navigation.

## *World-Class Design*

Polar Class 6 - designed and built to the latest uncompromising standards for ships operating in Polar waters, for complete comfort and peace of mind.

<sup>^</sup>Helicopter and submarine at additional cost, subject to regulatory approval, availability, weight restrictions, medical approval and weather and ice conditions. \*Spa treatments at additional cost. NB: Some images are artist's impressions. Ship featured is Scenic Eclipse



### *Up to 10 Dining Experiences*

Enjoy a culinary journey at up to 10 dining experiences, ranging from casual to fine dining, including 24-hour in suite dining.

### *GPS Dynamic Positioning System*

Maintains the Discovery Yacht's location without dropping anchor onto sensitive seabeds.

### *Senses Spa*

The exclusive Senses Spa boasts 550m<sup>2</sup> of pure indulgence and tranquility, featuring an extensive menu of luxury treatments\*.

### *Marina*

The specially designed marina makes boarding our Zodiacs and kayaks a breeze, as well as access to our warm water activities.



### *Submarine^*

Dive below and explore the delights and mysteries of the deep on an unforgettable excursion in our submarine.

### *Oversized Stabilisers*

Custom-built stabilisers are 50% larger than other ships. Providing greater stability for navigating waters and disembarking for shore excursions.

### *Nine Bars & Lounges*

With an impressive array of indoor and outdoor spaces, no more than 228 guests, there is plenty of room to relax.

### *Theatre*

The state-of-the-art theatre hosts entertainment, lectures and education programs.

### *Zodiacs*

The fleet of Zodiacs will take you to the heart of your destination.







## Scenic Eclipse Discovery Yachts Ultra-Luxury Suites

WATCH NOW 



Explore the  
luxurious suites



### *A Place to Watch the World Float By*

Your ultra-luxury suite features Egyptian cotton linen and all the luxury amenities you would expect from a 6-star hotel. Enjoy our Scenic Slumber Beds, complete with pillow menu and electronic control – adjustable for your most comfortable lounging or sleeping positions. Relax with ambient lighting options for whatever suits your mood, your separate lounge area and not forgetting the all-important ‘window to the world’, your private verandah for making the most of that fresh ocean air.

### *Butler Service*

Every guest will enjoy the services of a professional butler. They'll ensure you have complimentary refreshments, a re-stocked mini-bar and will cater for your needs.

A Owner's Penthouse Suite  
B Deluxe Verandah Suite



B



Scenic Eclipse sets the standard in ultra-luxury cruising with 114 luxurious suites across five decks. Designed as your own indulgent haven, each suite is incredibly spacious and filled with natural light, thanks to floor-to-ceiling sliding doors opening onto your private verandah or terrace.

From the generous 32m<sup>2</sup> Verandah Suites to the 245m<sup>2</sup> Two-bedroom Penthouse Suite, the beautiful accommodation features elegant furnishings, state-of-the-art amenities, separate sleep zone and lounge area, butler service and more to enhance your experience.

It's your ultimate retreat after a day of discovery.



### *Verandah Suites*

Ranging in size from 32-40m<sup>2</sup>, located on Decks 5-8, every Verandah Suite includes:

- A private verandah or terrace
- Luxury king size Scenic Slumber Bed
- Separate sleep zone and lounge area
- En-suite bathroom with shower and vanity
- Ambient lighting options
- Butler service
- In-suite beverage and dining service
- Mini-bar including illy coffee and specialty teas, re-stocked daily
- HDTV entertainment system and Bose® speakers
- Advanced Heating, Ventilation and Air-Conditioning system (HVAC) provides 100% fresh air
- The highest sound insulation as per the marine class society Bureau Veritas





## Scenic Eclipse Discovery Yachts Owner's Penthouse Suites



WATCH NOW 



Explore the  
luxurious suites

### Redefining Ultra-Luxury

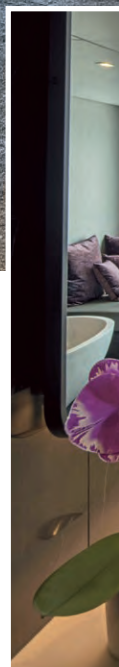
Every feature of these spacious suites has been carefully considered to create your ultimate retreat. From the unsurpassed views no matter where you are, to a private lounge and dining area, a super-sized bathroom and a butler unpacking your bags on arrival, you'll never want to leave.

For a once-in-a-lifetime experience, combine an Owner's Penthouse Suite with a Spa Suite to create the lavish Two-bedroom Penthouse Suite – an incredible 245m<sup>2</sup> of unsurpassed luxury.

A Owner's Penthouse Suite lounge bathroom

B Owner's Penthouse Suite bathroom, Scenic Eclipse

<sup>\*</sup>Limited per day and limited in remote regions.





Handcrafted, sumptuous and extraordinary in every regard, staying in one of only two Owner's Penthouse Suites is the ultimate ultra-indulgence. Your home-away-from-home is located at the bow of the yacht, on Deck 9, and boasts the best views on board.

Featuring a spacious curved terrace with personal private spa pool and sun loungers, a private lounge and dining area and a super-sized bathroom, these 195m<sup>2</sup> oversized suites set the benchmark in ultra-luxury accommodation at sea, thanks to the extra special touches for which Scenic is famous.



### *Owner's Penthouse Suites*

An enormous 195m<sup>2</sup> in size, with these exclusive features and inclusions:

- Spacious terrace with lounge area, sun loungers and private spa pool
- In-suite dining with seating for up to eight guests
- Personalised mini-bar re-stocked daily
- Therapeutic spa bath
- Dual vitality mist showers with colour light therapy
- Guest powder room, dual vanity and VIP amenities
- Complimentary one hour in-suite spa treatment per guest
- Complimentary laundry service<sup>^</sup>
- Priority dining in specialty restaurants
- Priority choice of shore excursions
- VIP embarkation and disembarkation
- Advanced Heating, Ventilation and Air-Conditioning system (HVAC) provides 100% fresh air
- The highest sound insulation as per the marine class society Bureau Veritas





## Scenic Eclipse Discovery Yachts Spa Suites



### *Indulgence & Rejuvenation*

Imagine returning from an exhilarating day of truly all-inclusive shore excursions to your private sanctuary, with a steaming bath drawn by your butler. Gaze out over your verandah to the vistas beyond and sip on a glass of Champagne – heaven.

A Spa Suite bathroom

B Spa Suite lounge and bathroom separated by guest-controlled opaque or transparent glass

<sup>^</sup>Limited per day and limited in remote regions.





With a premier location on Decks 8 and 9 and an impressive 46-50m<sup>2</sup> in size, our opulent Spa Suites provide a luxury retreat. Featuring a four-poster king size Scenic Slumber Bed, separate living room and a private verandah, they're the perfect hideaway to return to after an exhilarating day of truly all-inclusive shore excursions.

The signature double size Philippe Starck-designed spa bath overlooking your verandah is exclusive to these suites, providing the perfect complement to your days of activities. You'll also be pampered with a complimentary spa treatment during your cruise.



### *Spa Suites*

Ranging in size from 46-50m<sup>2</sup>, with these exclusive features and inclusions:

- Double size Philippe Starck-designed spa bath
- Vitality mist showers with colour light therapy
- Dual vanity basins and luxurious amenities
- Electro-chromic glass technology partition – switch between opaque and transparent at the touch of a button
- Separate lounge area with reading chair
- Complimentary one-hour spa treatment per suite
- Complimentary laundry service<sup>^</sup>
- Priority choice of shore excursions
- VIP embarkation and disembarkation
- Ground-breaking 3-stage hypo-allergenic air purification system
- The highest sound insulation as per the marine class society Bureau Veritas





## *Scenic Eclipse Discovery Yachts* **Panorama Suites**



### *Panorama Suites*

Ranging in size from 105-110m<sup>2</sup>, with these exclusive features and inclusions:

- Spacious terrace with sun loungers
- Bedroom suite with reading alcove, desk and HDTV
- Separate lounge and dining area with a four-seater dining table and cinema-surround HDTV
- Vitality mist showers with colour light therapy, full bath, dual vanity and VIP amenities
- Complimentary one-hour spa treatment per suite
- Complimentary laundry service^
- Priority dining in specialty restaurants
- Priority choice of shore excursions
- VIP embarkation and disembarkation
- Advanced Heating, Ventilation and Air-Conditioning system (HVAC) provides 100% fresh air
- The highest sound insulation as per the marine class society Bureau Veritas





Grandeur and style are taken to a whole new level in our Panorama and Grand Panorama Suites. Overlooking the bow of the yacht on Decks 6 and 8, these suites feature spacious curved terraces perfect for marvelling at incredible wildlife and landscapes.

Even from the comfort of your bedroom, you'll never miss a photo opportunity – accessing the outside world through your drop-down balcony window, with the gentle touch of a button.



### *All the Little Extras Make a World of Difference*

These grand suites include a host of special features and services. Curl up in your lounge with a Kindle e-book from your in-suite library and sip your favourite aperitif, personally delivered by your butler. All before enjoying an intimate dining experience, in the plush and private surroundings of your suite. Just one of many memories to treasure.

Guests in our Panorama Suites will also enjoy the privilege of priority dining in the specialty restaurants as well as priority choice of shore excursions and Scenic Discovery experiences. VIP embarkation and disembarkation are standard inclusions at the start and finish of your cruise.

A Separate lounge and dining area B Spacious bedroom

<sup>^</sup>Limited per day and limited in remote regions.









*Owner's Penthouse Suite,  
Scenic Eclipse*



# Scenic Eclipse

## Suite Layouts



### Verandah Suite & Deluxe Verandah Suite

Suite sizes: 32-34m<sup>2</sup> (344-366 sqft)

Our Verandah and Deluxe Verandah Suites provide a spacious and comfortable introduction to ocean cruising with the finest appointments and amenities.

#### Suite features & services:

- Private Verandah
- Luxury king size Scenic Slumber Bed
- Separate sleep zone
- Separate lounge area
- En-suite bathroom with shower and vanity
- Luxury bathroom amenities
- Advanced Heating, Ventilation and Air-Conditioning system (HVAC) provides 100% fresh air
- Butler service
- Shoeshine service
- Early morning tea/coffee service
- In-suite beverage service
- In-suite dining service
- Full mini-bar re-stocked daily
- Personalised butler bar featuring Illy coffee and specialty teas (replenished daily)
- HDTV and Bose® sound system



### Grand Deluxe Verandah Suite

Suite size: 38-40m<sup>2</sup> (409-430sqft)

Choose from the larger Grand Deluxe Verandah Suites, which provide even more room to relax.

#### Suite features & services:

- Private Verandah
- Luxury king size Scenic Slumber Bed
- Separate sleep zone
- Separate lounge area
- Walk-in robe
- En-suite bathroom with shower and vanity
- Luxury bathroom amenities
- Advanced Heating, Ventilation and Air-Conditioning system (HVAC) provides 100% fresh air
- Butler service
- Early morning tea/coffee service
- In-suite beverage service
- In-suite dining service
- Full mini-bar re-stocked daily
- Personalised butler bar featuring Illy coffee and specialty teas (replenished daily)
- HDTV and Bose® sound system



### Spa Suite

Suite size: 46-50m<sup>2</sup> (495-538sqft)

Located on the higher decks, our luxurious Spa Suites include additional features and services that will enhance the luxury of your time on board.

#### Suite features & services:

- Private Verandah
- Luxury king size four poster Scenic Slumber Bed
- Separate sleep zone
- Separate lounge area including reading chair
- Walk-in robe
- Double size Philippe Starck-designed jacuzzi
- Vitality mist showers with colour light therapy
- Dual vanity basins
- Separate toilet
- Luxury bathroom amenities
- Advanced Heating, Ventilation and Air-Conditioning system (HVAC) provides 100% fresh air
- Butler service
- Early morning tea/coffee service
- In-suite beverage service
- In-suite dining service
- Full mini-bar re-stocked daily
- Personalised butler bar featuring Illy coffee and specialty teas (replenished daily)
- HDTV and Bose® sound system
- One-hour complimentary spa treatment per suite
- Complimentary laundry service (limited per day)^



## Panorama Suite

Suite size: 110m<sup>2</sup> (1,184sqft)

Located at the front of the yacht on Deck 8, these opulent suites feature spacious curved terraces, additional features, services, and much more.

### Suite features:

- Spacious outdoor terrace with sun loungers
- Bedroom suite with reading alcove, desk and a HDTV
- Luxury king size Scenic Slumber Bed
- Walk-in-robe
- Vitality mist showers with colour light therapy
- Full size bath and spacious dual vanity
- VIP bathroom amenities
- Spacious lounge and dining area with cinema surround and a HDTV
- Dining table with seating for up to four guests
- Library including Kindle e-books
- Advanced Heating, Ventilation and Air-Conditioning system (HVAC) provides 100% fresh air
- Butler service
- Early morning tea/coffee service
- Canapés and petite fours delivered to your suite
- In-suite beverage service
- In-suite dining service
- Full premium mini-bar re-stocked daily
- Personalised butler bar featuring Illy coffee and specialty teas (replenished daily)
- Bose® sound system
- One-hour complimentary spa treatment per suite
- Complimentary laundry service (limited per day)^
- Priority dining in specialty restaurants
- Priority choice of shore excursions
- Priority choice of Scenic Discovery excursions – Zodiacs, kayaks, e-bikes and more
- Priority booking for spa treatments, helicopter and submarine experiences – additional charges apply
- VIP embarkation and disembarkation



## Grand Panorama Suite

Suite size: 105m<sup>2</sup> (1,130sqft)

Located at the front of the yacht on Deck 6, these opulent suites feature curved terraces and spacious interiors with additional services and more.

### Suite features & services:

- Curved outdoor terrace with sun lounges
- Bedroom suite with reading alcove, desk and a HDTV
- Luxury king size Scenic Slumber Bed
- Walk-in-robe
- Vitality mist showers with colour light therapy
- Full size bath and spacious dual vanity
- VIP bathroom amenities
- Spacious lounge and dining area with cinema surround and a HDTV
- Dining table with seating for up to four guests
- Library including Kindle e-books
- Advanced Heating, Ventilation and Air-Conditioning system (HVAC) provides 100% fresh air
- Butler service
- Early morning tea/coffee service
- Canapés and petite fours delivered to your suite
- In-suite beverage service
- In-suite dining service
- Full premium mini-bar re-stocked daily
- Personalised butler bar featuring Illy coffee and specialty teas (replenished daily)
- Bose® sound system
- One-hour complimentary spa treatment per suite
- Complimentary laundry service (limited per day)^
- Priority dining in specialty restaurants
- Priority choice of shore excursions
- Priority choice of Scenic Discovery excursions – Zodiacs, kayaks, e-bikes and more
- Priority booking for spa treatments, helicopter and submarine experiences – additional charges apply
- VIP embarkation and disembarkation







## Owner's Penthouse Suite

Suite size: 190-195m<sup>2</sup> (2,045-2,099sqft)

Our oversized Owner's Penthouse Suites are the ultimate indulgence. Located on Deck 9 and elegantly appointed with spacious curved terraces featuring a private jacuzzi and the best views on board, you will never want to leave.



### Suite features & services:

- Spacious outdoor terrace with lounge area, sun loungers and private jacuzzi
- Bedroom suite with reading alcove, desk and 60" HDTV
- Luxury king size Scenic Slumber Bed
- His and hers walk-in-robe
- Dual vitality mist showers with colour light therapy
- Therapeutic spa bath
- Spa Day Bed – transforming for in-suite private spa experience
- Spacious dual his and hers vanity
- VIP bathroom amenities
- Spacious lounge and dining area with cinema surround and 70" HDTV
- Dining table with seating for up to eight guests
- Library including Kindle e-books
- Advanced Heating, Ventilation and Air-Conditioning system (HVAC) provides 100% fresh air
- Butler service
- Packing and unpacking of luggage
- Early morning tea/coffee service
- Canapés and petite fours delivered to your suite
- In-suite beverage service
- In-suite dining service
- Personalised wine bar and mini-bar re-stocked daily with your preferences
- Personalised butler bar featuring Illy coffee and specialty teas (replenished daily)
- Guest powder room
- Bose® sound system
- One-hour complimentary in-suite spa treatment per guest
- Unlimited complimentary laundry service<sup>^</sup>
- Guaranteed dining in specialty restaurants
- Guaranteed preferred choice of shore excursions
- Guaranteed preferred choice of Scenic Discovery excursions – Zodiacs, kayaks, e-bikes and much more
- VIP booking for spa treatments, helicopter and submarine experiences – additional charges apply
- VIP embarkation and disembarkation





## Two-bedroom Penthouse Suite

Suite size: 240-245m<sup>2</sup> (2,583-2,637sqft)

Combine our Owner's Penthouse Suite with a Spa Suite to create a magnificent Two-bedroom Penthouse Suite.

### Penthouse features & services:

- Spacious outdoor terrace with lounge area, sun loungers and private jacuzzi
- Bedroom suite with reading alcove, desk and 60" HDTV
- Luxury king size Scenic Slumber Bed
- His and hers walk-in-robe
- Dual vitality mist showers with colour light therapy
- Therapeutic spa bath
- Spa Day Bed – transforming for in-suite private spa experience
- Spacious dual vanity
- VIP bathroom amenities
- Spacious lounge and dining area with cinema surround and 70" HDTV
- Dining table with seating up to eight guests
- Library including Kindle e-books
- Advanced Heating, Ventilation and Air-Conditioning system (HVAC) provides 100% fresh air
- Butler service
- Packing and unpacking of luggage
- Early morning tea/coffee service
- Canapés and petite fours delivered to your suite
- In-suite beverage service
- In-suite dining service
- Personalised wine bar and mini-bar re-stocked daily with your preferences
- Personalised butler bar featuring Illy coffee and specialty teas (replenished daily)
- Guest powder room
- Bose® sound system
- One-hour complimentary in-suite spa treatment per guest
- Unlimited complimentary laundry service<sup>^</sup>
- Guaranteed dining in specialty restaurants
- Guaranteed preferred choice of shore excursions
- Guaranteed preferred choice of Scenic Discovery excursions – Zodiacs, kayaks, e-bikes and much more
- VIP booking for spa treatments, helicopter and submarine experiences – additional charges apply
- VIP embarkation and disembarkation

### Spa Suite features & services:

- Private Verandah
- Luxury king size four poster Scenic Slumber Bed
- Separate sleep zone with ottoman
- Walk-in robe
- Double size Philippe Starck-designed jacuzzi
- Steam shower with oversized head and light therapy
- Dual vanity basins
- Separate toilet
- Luxury bathroom amenities
- Separate lounge area including reading chair
- Advanced Heating, Ventilation and Air-Conditioning system (HVAC) provides 100% fresh air
- Butler service
- Early morning tea/coffee service
- In-suite beverage service
- In-suite dining service
- Full mini-bar re-stocked daily
- Personalised butler bar featuring Illy coffee and specialty teas (replenished daily)
- HDTV and Bose sound system
- One-hour complimentary spa treatment per suite
- Complimentary laundry service (limited per day)<sup>^</sup>





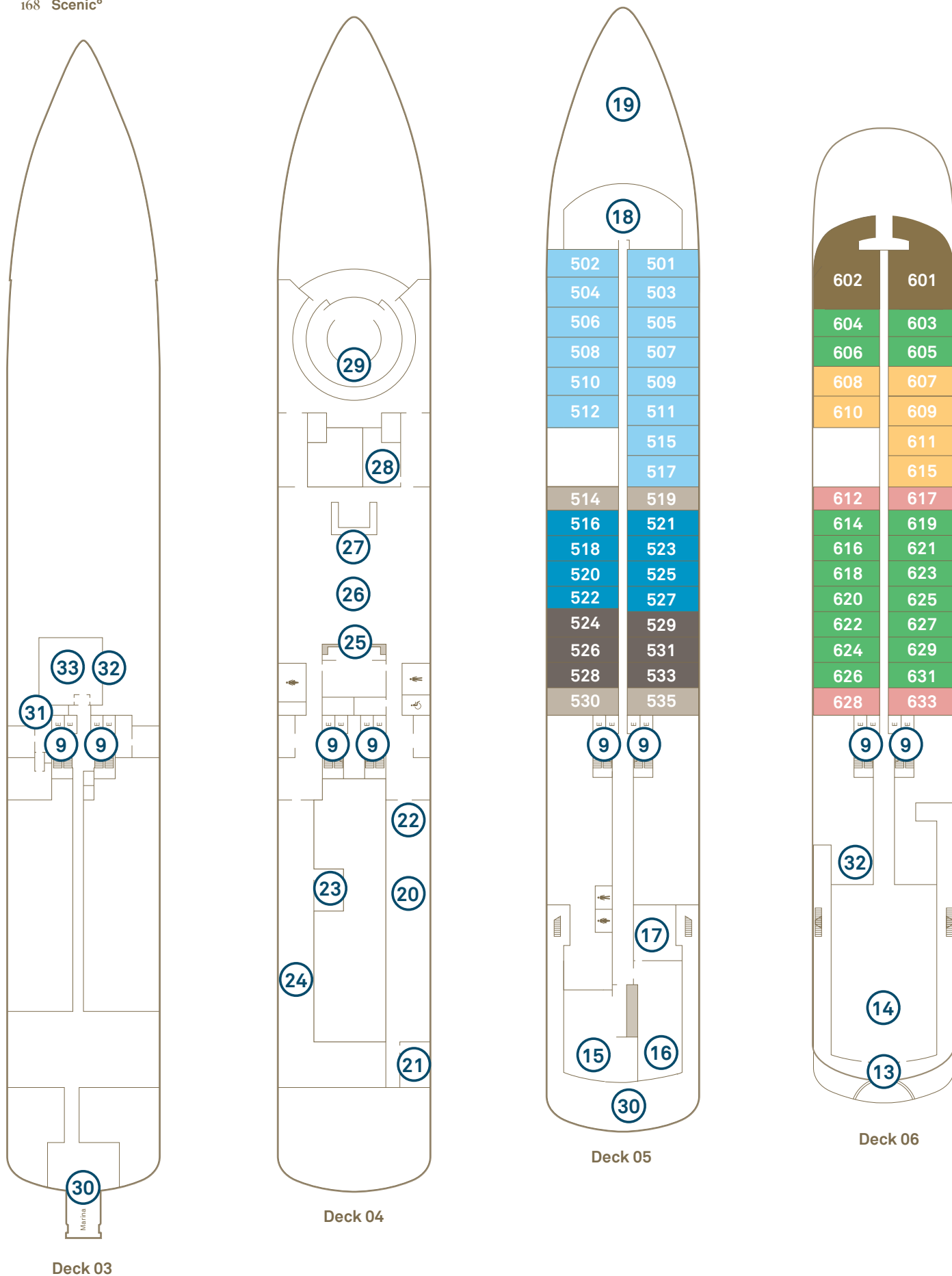




*Deck 10,  
Scenic Eclipse II*



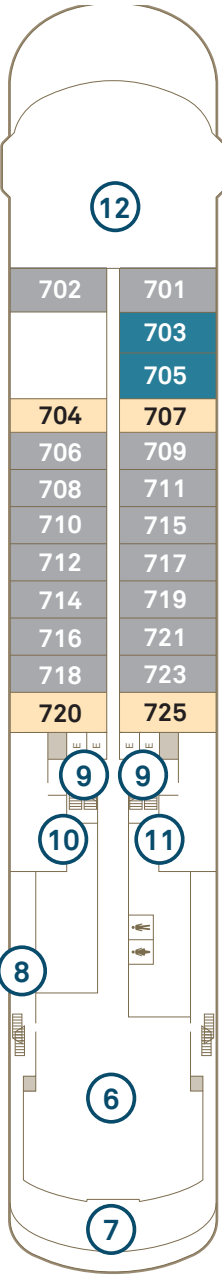
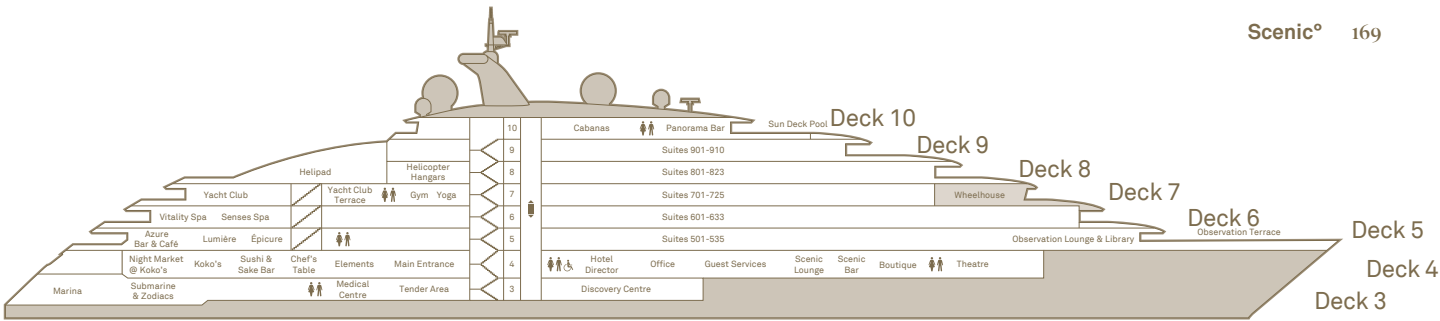




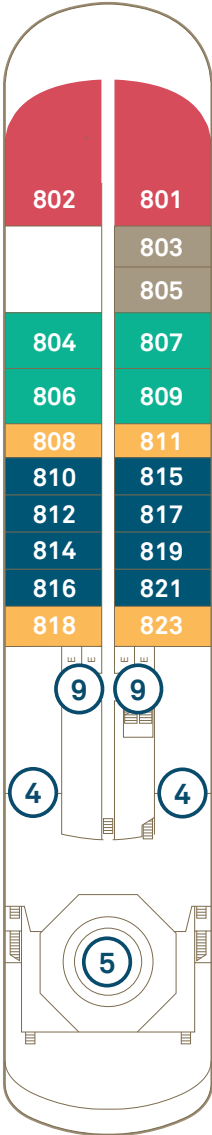
## Deck Plan

- |                             |                       |                                |                          |                               |
|-----------------------------|-----------------------|--------------------------------|--------------------------|-------------------------------|
| ① Panorama Bar              | ⑧ Hanging Chairs      | ⑮ Lumière                      | ⑳ Sushi @ Koko's         | ㉑ Theatre                     |
| ② Sun Deck Pool             | ⑨ Elevator            | ⑯ Azure Bar & Café             | ㉒ Chef's Table@ Elements | ⑳ Marina entrances            |
| ③ Cabanas                   | ⑩ Yoga & Pilates room | ⑰ Scenic Épicure               | ㉓ Elements               | ㉑ Medical centre              |
| ④ Helicopter hangars        | ⑪ Gym & fitness area  | ⑱ Observation Lounge & Library | ㉔ Guest Services         | ㉒ Self-service guest laundry† |
| ⑤ Helipad                   | ⑫ Wheelhouse          | ⑲ Observation Terrace          | ㉕ Scenic Lounge          | ㉓ Discovery Centre            |
| ⑥ Yacht Club                | ⑬ Spa Vitality Pool   | ㉒ Koko's                       | ㉖ Scenic Bar             |                               |
| ⑦ Yacht Club outdoor dining | ⑭ Senses Spa          | ㉓ Night Market @ Koko's        | ㉗ Boutique               |                               |

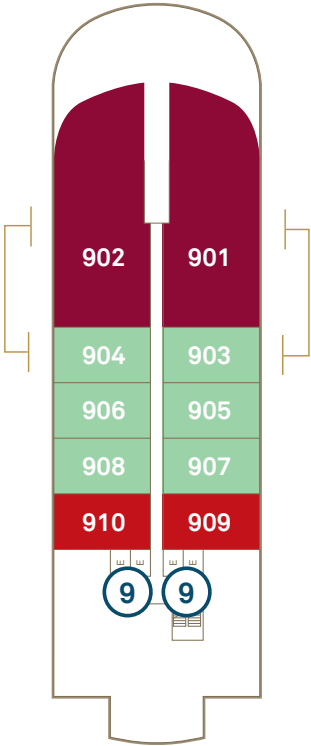




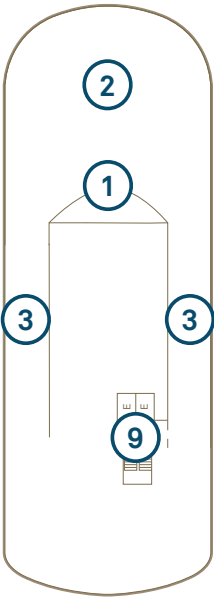
Deck 07



Deck 08



Deck 09



Deck 10

## Scenic Eclipse / Scenic Eclipse II

Built 2018/2023 | Passengers 200/228 | Suites 114 | Crew 192/176 | Length 168 metres | Gross Tonnage 17,085 | Speed 17 knots

### Suite Categories

Deck 5		Deck 6		Deck 7		Deck 8		Deck 9	
DD	Grand Deluxe Verandah 38-40m <sup>2</sup>	GP	Grand Panorama 105m <sup>2</sup>	BD	Grand Deluxe Verandah 38-40m <sup>2</sup>	P	Panorama 110m <sup>2</sup>	OT	Two-bedroom Penthouse 240-245m <sup>2</sup>
DB	Deluxe Verandah 32-34m <sup>2</sup>	CD	Grand Deluxe Verandah 38-40m <sup>2</sup>	BA	Deluxe Verandah 32-34m <sup>2</sup>	S	Spa Suite 46-50m <sup>2</sup>	OP	Owner's Penthouse 190-195m <sup>2</sup>
DA	Deluxe Verandah 32-34m <sup>2</sup>	CA	Deluxe Verandah 32-34m <sup>2</sup>	B	Verandah 32m <sup>2</sup>	AD	Grand Deluxe Verandah 38-40m <sup>2</sup>	SB	Spa Suite 46-50m <sup>2</sup>
D	Verandah 32m <sup>2</sup>	C	Verandah 32m <sup>2</sup>			AA	Deluxe Verandah 32-34m <sup>2</sup>	SA	Spa Suite 46-50m <sup>2</sup>
						A	Verandah 32m <sup>2</sup>		

\*Suites 901 & 903 and 902 & 904 connect as Two bedroom Penthouse Suite. The deck plan and suite layout images are an indication only and may vary between ships. Suite measurements are approximate, and those in same category may vary in size. †Laundry is located on Deck 5 on Scenic Eclipse II





### *More Scenic Eclipse Brochures*

Antarctica and South America

The Arctic and Fjords

Europe, the Mediterranean, North and Central America

Indonesia, Australia and the Pacific

## Contact

**FIRSTCLASS.COM.AU**  
Australia's First Class Travel Specialist

1300 30 80 81

Email: [Travel@firstClass.com.au](mailto:Travel@firstClass.com.au)

Scenic Tours Pty Ltd trading as Scenic. ABN 85 002 715 602



Association of  
Arctic Expedition Cruise  
Operators

